

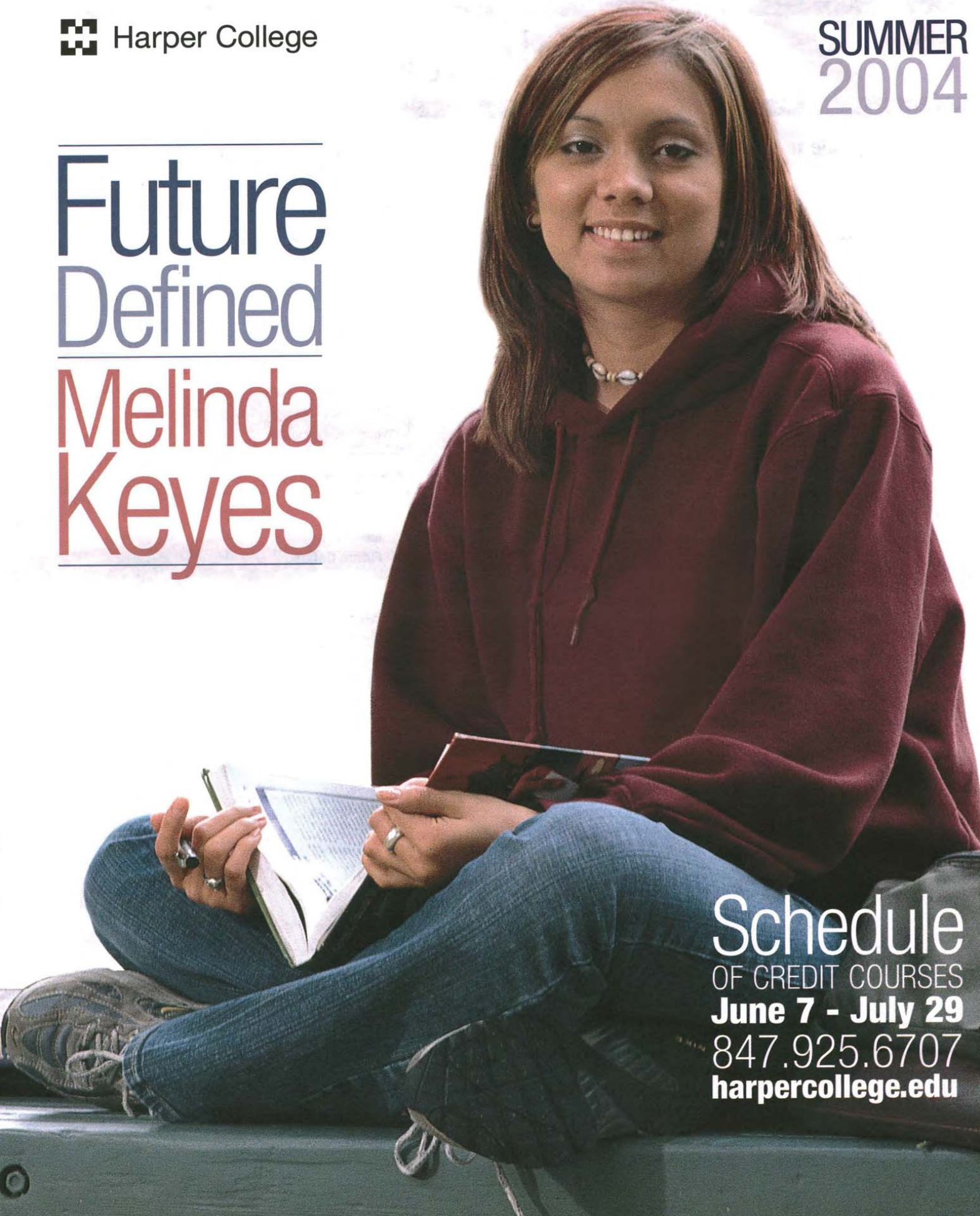
---

Future  
Defined

---

Melinda  
Keyes

---



Schedule  
OF CREDIT COURSES  
**June 7 - July 29**  
847.925.6707  
[harpercollege.edu](http://harpercollege.edu)

# Contents

## Complete Guide to Credit Course Offerings.

Accounting . . . . .	6	History . . . . .	12
Administrative Technology . . . . .	6	Hospitality Management . . . . .	12
Adult Educational Development . . . . .	18-19	Human Services . . . . .	12
Anthropology . . . . .	6	Humanities . . . . .	12
Architectural Technology . . . . .	7	Interior Design . . . . .	12
Art . . . . .	7	International Business . . . . .	12
Astronomy . . . . .	7	Japanese . . . . .	12
Biology . . . . .	7	Journalism and Mass Communications . . . . .	12
Cardiac Technology . . . . .	7	Literature . . . . .	13
Career Development . . . . .	7	Maintenance Technology . . . . .	13
Certified Nursing Assistant . . . . .	7	Management . . . . .	13
Chemistry . . . . .	7	Marketing . . . . .	13
Computer Information Systems . . . . .	8	Mathematics . . . . .	13
Computer Science . . . . .	10	Medical Office Administration . . . . .	14
Criminal Justice . . . . .	10	Music . . . . .	14
Dental Hygiene . . . . .	10	Nursing . . . . .	15
Dietetic Technician . . . . .	10	Paralegal Studies . . . . .	15
Early Childhood Education . . . . .	10	Park and Golf Maintenance . . . . .	15
Economics . . . . .	10	Philosophy . . . . .	15
Education . . . . .	10	Physical Education . . . . .	15
Electronics Engineering Technology . . . . .	10	Physical Science . . . . .	15
Engineering . . . . .	10	Physics . . . . .	16
English . . . . .	11	Plant Science Technology . . . . .	16
English as a Second Language . . . . .	18	Political Science . . . . .	16
Fine Arts . . . . .	11	Psychology . . . . .	16
Fire Science . . . . .	11	Reading . . . . .	16
FlexEd® . . . . .	6	Real Estate . . . . .	16
French . . . . .	11	Sign Language . . . . .	17
Geography . . . . .	11	Sociology . . . . .	17
Geology . . . . .	11	Spanish . . . . .	17
German . . . . .	11	Speech and Theatre . . . . .	17
HVAC—Heating/Ventilation and Air Conditioning . . . . .	11		

Harper College is committed to a policy of equal opportunity in its admission and employment programs. Harper College does not discriminate on the basis of race, color, religion, sex, national origin, ancestry, age, marital status, sexual orientation, disability or unfavorable discharge from military service. This policy governs the recruitment and admission of students, the recruitment and employment of faculty and staff and the operation of any of the College's programs and activities as specified by federal laws and regulations. It is also the policy of Harper College that no student or employee shall be subjected to sexual harassment, which is regarded as a form of discrimination.

## General Information

Adult Educational Development . . . . .	18-19
Campus Map . . . . .	23
English as a Second Language . . . . .	18
Extension Site Listing . . . . .	23
FlexEd® . . . . .	6
Quick Guide to Admissions, Advising and Registration . . . . .	3
<b>Registration . . . . .</b>	<b>.5</b>
Student Services . . . . .	20-22
Things You Should Know . . . . .	4
Tuition and Fees . . . . .	.5
What's New at Harper . . . . .	22

## About the Cover

### Melinda Keyes Future Defined

Melinda Keyes enrolled at Harper College because of the affordable classes and proximity to her home and because she was undecided about a career. After attending Harper for two years, Keyes transferred to Loyola University in Chicago in fall 2003 to pursue a bachelor's and master's degree in social work. She credits Harper with helping her make a smooth transition to Loyola and selecting a career. She says the Career Center and the Career Development course assisted her with choosing a career that fit her personality.

Time spent at the Tutoring Center with Marie Eibl, area tutor coordinator, helped Keyes to understand and complete her math courses. Keyes learned about Loyola on a free transfer field trip sponsored by Student Development and the Center for Multicultural Learning. "I was interested in colleges close to home and in the city," she says. "All I had to do was sign up, and I was able to tour Loyola's campus... so I decided to attend. Loyola has been a good choice for me. During my senior year in high school, I never thought about attending Loyola. Harper helped me make that decision."


At Harper, Keyes was a student ambassador and shared her knowledge of Harper with prospective students at transfer fairs. As a member of the eXcel Leadership program she says she learned about herself and increased her leadership skills. "Harper is really a great school for the student who doesn't know where they want to go," she says. "You save time and money by taking your general education courses at Harper, and the College provides the resources to take the next step."

**Learn more online:** Transfer Programs From [harpercollege.edu](http://harpercollege.edu), select **Learning**, then **Transfer Programs**.

**Credit courses begin June 7.**

# Quick Guide

## Admissions, Advising and Registration



### NEW students

You are a "New Student" if you have not previously been admitted to and have never been enrolled in credit courses at Harper College. You will need to complete an application for admission before you register. Applications are available online, in the Admissions Office, New Student Services and Art Center, C101, or by calling 847.925.6700.

#### STEP 1

Complete the application for admission, and submit it and a \$25 nonrefundable fee to the Harper College Admissions Office. Degree-seeking students are also required to submit an official high school transcript or GED results and official transcripts from each college attended. (Non-degree-seeking students are not required to provide transcripts.)

#### STEP 2

You are encouraged to attend a new student advising session. These small group sessions last about one and one-half hours and will give you information about Harper College programs, services, admission requirements and registration procedures. They also include an opportunity for each group member to speak with an advisor regarding course selection. Call 847.925.6208 to reserve a seat and/or to get more information. Morning, afternoon and evening sessions are available. (You can access new student information online at harpercollege.edu. Click on Advising/Counseling, then Center for New Students and Orientation.)

#### STEP 3

If you plan to enroll in your first college level English and/or math course, you must take computerized writing, reading and/or math assessment tests. Test results determine your placement in those courses and must be completed prior to registration. You may be eligible for a waiver of testing with appropriate ACT scores and/or college transcripts. Contact the Center for New Students and Orientation at 847.925.6208, or the Assessment and Testing Center at 847.925.6541 for details.

#### STEP 4

Select class times and sign up for classes. New students can enroll in courses via the Web, by touchtone or in person. See page 5 for registration options and instructions.

#### STEP 5

Pay tuition and fees by the due date given to you at the time of registration.

**If you apply to Harper for the summer session and plan to continue full time in the fall, please note that you will be invited to an orientation program which will include assessment testing, essential new student information, one-on-one counseling and registration.**

### Currently and previously enrolled credit students

As a "previously enrolled" student, you have already submitted an application, been admitted to and enrolled in a credit class at Harper College. You do not need to reapply.

#### STEP 1

You are encouraged to schedule an appointment in one of the academic advising centers for individualized academic advising, educational planning, information on transferring to another institution and/or to determine which catalog edition to follow. Call 847.925.6393 or 847.925.6522 for an appointment. (If you are blocked from registration because of academic standing, you must see a counselor before your registration will be unblocked.)

#### STEP 2

If you plan to enroll in your first college-level English and/or math course, you must take the writing, reading and/or math assessment tests. Test results determine your placement in those courses and must be completed prior to registration. You may be eligible for a waiver of testing with appropriate ACT scores and/or college transcripts. Contact one of the academic advising centers at 847.925.6393 or 925.6522 or the Assessment and Testing Center at 847.925.6541 for details.

#### STEP 3

Select class times and register. Currently and previously enrolled Harper College students can enroll in courses via the Web, by touchtone or in person. See page 5 for registration options and instructions.

#### STEP 4

Pay tuition and fees by the due date given to you at the time of registration.

# Things you should know

## College Hours

Admissions is open from 8 a.m. to 8 p.m. Monday through Thursday; 8 a.m. to 4:30 p.m. Friday; 9 a.m. to noon Saturday. Other College offices are open for business Monday through Thursday, from 8 a.m. to 6 p.m. and Friday from 8 a.m. to 4:30 p.m. For extended hours, please check the Web site: harpercollege.edu

## Summer Hours

The College is closed Friday, Saturday and Sunday from June 11–August 15.

## Cancellations

The College reserves the right to withdraw any section of any course if enrollment is not sufficient to warrant offering that section. An effort is made to reach students with information on cancellations.

## Eligibility for Admission

All high school graduates or the equivalent are eligible for admission to the College. Non-high school graduates, home schooled students who have not completed their program and students still enrolled in high school are welcome to participate in College offerings under certain conditions. Please contact the Admissions Office at 847.925.6506 for more information.

## Residency

A student who has resided within the State of Illinois and the Harper College district 30 days immediately prior to the start of the term is eligible to be classified as an in-district student for purposes of calculating appropriate tuition rate.

Proof of in-district status is **required** at the time of registration. Proof can include driver's license, voters registration card, check book, library card, lease, utility bill or tax bill.

## Testing

Assessment testing is required of all new full-time students and any student entering his or her first college level English or math course and must be completed prior to registration. The full assessment includes writing, reading and math testing, and it will take approximately two hours to complete. Photo identification is required. For more information, check harpercollege.edu/services/test

## Limited Enrollment Programs

Enrollment in certain career programs requires admission to the College and fulfillment of specific requirements for admission to the program. (Contact Admissions, 847.925.6765, for details.) These limited enrollment programs are Cardiac Technology, Cardiographic Technician, Dental Hygiene, Diagnostic Medical Sonography, Electrocardiograph Technician, Emergency Medical Technician - Paramedic, Emergency Medical Technician - Basic, Mammography, Nursing (RN and LPN), Certified Nursing Assistant, Phlebotomy, Radiologic Technology and Vascular Technologist. Some courses and sections which are offered only to students in limited enrollment programs are not listed in this course schedule.

## Auditing a Course

A student who wishes to audit a course will be required to pay full tuition and fees and must obtain approval from the instructor, department chair or dean before enrolling in the class. Registration for audit status may be completed only during final registration the first week of classes and must be the original enrollment in the class. Students taking the class for credit are given priority.

## Illinois Articulation Initiative (IAI)

If you are a new student starting at Harper summer 1998 or later, you may be eligible to participate in a state-wide agreement called the Illinois Articulation Initiative (IAI) designed to help Illinois college students transfer easily. Eligible students who earn the AA or AS degree at Harper will have completed a General Education Core Curriculum which is transferrable to more than 100 participating Illinois colleges and universities. If you are not looking to earn a degree before transfer, you can complete just the Core Curriculum at Harper and know that your general education courses will transfer to the other participating colleges and universities. You can get more information from the Center for New Students and Orientation, 847.925.6208, or visit the IAI Web site at www.ITransfer.org.

## College Credit from Other Institutions

Students seeking a certificate or degree from Harper College and wanting to transfer credits from another college should complete a Transcript Evaluation Request at the Registrar's Office, Building A, Room A213. Students must have an official transcript from each college attended sent to Harper College's Admissions Office, Building A, Room A137c.

Students wishing to use previous college level math, English and other credits to fulfill Harper course prerequisites must bring transcripts or grade reports to registration and to the first day of class. Students do not need to request an evaluation for this purpose. Questions about previous college courses can be directed to the Registrar's Office, 847.925.6500.

## Hope Tax Credit

For the first two years of college, you or your parents can claim a new nonrefundable 100 percent tax credit up to \$1,500 of tuition and fees per year. This tax credit allows you to claim tuition and fee expenses if you enroll in a degree or certificate program for at least six credit hours.

## Lifetime Learning Tax Credit

This credit will be permitted for subsequent education. This is a tax credit up to \$1,000 of direct educational expenses paid. Other tax benefits may be available to students and families. For more information on these tax benefits, see the U.S. Department of Education's Families Guide to the 1997 Tax Cuts for Education ([www.ed.gov/updates/97918tax.html](http://www.ed.gov/updates/97918tax.html)) or the IRS Web site.

## Senior Citizen Discount

This discount is available to district residents 60 years of age and older. They will be assessed a 50 percent tuition to credit courses that are dedicated specifically to senior citizens. District residents age 65 years of age and older are eligible for a 100 percent discount for all credit courses during late registration. Late registration is the first day of the term or the first day of the session in which the class meets. This must be the student's initial enrollment in the class and there must be space available. Students may not drop and reenroll for the discount.

## Education Service Agreement

Businesses within the Harper College district can now offer Harper in-district tuition rates to employees who live outside the College district but within Illinois. The Educational Services Agreement Program permits employees of in-district businesses to attend Harper classes at in-district prices if their employers have registered for this free program. The in-district tuition is available whether the cost is to be paid by the employee or by the company. Employers who are interested in this program should contact Admissions Outreach, 847.925.6206.

## Chargeback/Joint Agreement

Out-of-district students desiring to pursue a certificate or degree program at Harper that is not available at their community college may apply for a chargeback or joint agreement. If the application is approved, the student will be able to receive in-district rates. For further information, call 847.925.6282.

## Special Notes

Students who are physically disabled should call 847.925.6266 for registration information.

Handicap parking is available for students who have handicap license plates or State of Illinois or township-issued handicap parking cards. For further information contact Health and Psychological Services at 847.925.6268.

Some classes may be filled because currently and previously enrolled students have been registering since October.

Changes in available classes made after publication of this course schedule and prior to registration will be listed on the Web site, harpercollege.edu, and on the master schedule in Building A, and other locations on campus.

## Course Outlines

In accordance with Illinois law, Harper College maintains a file of course outlines for all credit courses included in this course schedule. Complete information is given on course content, methodology and objectives. The outlines are available for student review in the Division offices or in the office of the Associate Vice President of Academic Affairs.

## The Family Educational Rights and Privacy Act of 1974 Annual Notice to Students

The following notice and information is given by William Rainey Harper College, District Number 512 to advise its students of their rights under the Family Educational Rights and Privacy Act of 1974 (The Act).

The Act established the right of students to inspect and review their education records; provides that personally identifiable information will not, with certain exceptions, be disclosed without the student's written permission; provides for guidelines for the correction of inaccurate or misleading data through informal or formal hearings; grants students the right to file complaints with the Family Educational Rights and Privacy Act Office (FERPA) concerning alleged failures of the College to comply with The Act; and makes provisions for notice to the students concerning their rights.

A student who wishes to review his or her education records must complete the appropriate form and submit it to the Registrar. The student will be notified in writing of a date and time he or she may come to review the records.

The following student data is hereby designated as Directory Information and as such may be disclosed or released by the College for any purpose and at its discretion: Student Name, Home Address, Home Telephone, Major Area of Study, Dates of Attendance, Part-Time/Full-Time Enrollment Status, Degrees/Certificates Earned, Awards Received, Last College Attended, Officially Recognized Activities, Date and Place of Birth, Weights and Heights of Members of Athletic Teams.

To have any or all of the Directory Information withheld, the student must give written notice, in person or by certified mail, return receipt requested and addressed to the Registrar by the first day of each course or program, as the case may be, for which he/she is enrolled.

Harper College has adopted policies and procedures implementing The Act, which are contained in the Harper College Catalog.

Copies of The Act, Harper College policies and procedures, the Harper College Catalog and forms for use in implementing the Act are available on request in the Registrar's Office, Building A, Room A213.

## Continuing Education

To register for Continuing Education courses, consult the Continuing Education schedule that will be mailed to your home in May.

# Registration

# Tuition/Payment Policies

## Web Registration – harpercollege.edu

Now through June 8, 2004

For currently/previously enrolled students and new students.

Follow the prompts:

1. Login
2. Enter registration term
3. Build your course schedule
4. Edit, or drop, courses from your schedule
5. Complete schedule

## Touchtone Registration - 847.925.1515

For currently and previously enrolled students.

February 25-June 8  
Monday-Thursday, 7 a.m.-10 p.m.  
Friday, 7 a.m.-4:30 p.m.

June 5 (only)  
Saturday, 9 a.m.-4:30 p.m.

### Instructions:

- Step 1. Dial 847.925.1515.  
Step 2. Enter your social security number.  
Step 3. Enter your date of birth.  
Step 4. Enter your request as prompted:
- 1 = register for a course (The system will ask you to enter the four-digit touchtone number and then the three-digit section number.)
  - 2 = drop a course
  - 3 = complete this registration session, check your fee balance or pay fees
  - 4 = check your current schedule (This request will list times and room locations of courses.)
  - 9 = cancel all registration activity completed during this call

**IMPORTANT:** After finishing all inquiries, you must enter 3 to confirm your schedule. Additional instructions may be given at that point. Your registration confirmation notice and bill will be mailed if your registration is successful.

## In-Person Registration – Building A

For currently/previously enrolled and new students who apply at least two business days in advance.

May 4-27, Room A213  
Monday through Thursday  
8 a.m.-8 p.m.

June 1-3, Room A137a  
Tuesday through Thursday  
11 a.m.-7 p.m.

## Schedule Changes / Adds and Drops

Building A, Room A137a, June 7-8  
Monday and Tuesday  
11 a.m.-7 p.m.

## ESL Registration – 847.925.6226

New ESL (English as a Second Language) Students, call the above number for registration information.

## Tuition *(subject to change without notice.)*

In-district residents .....	\$71.00 per credit hour
<i>(Includes full-time employees of companies within Harper's district—see Education Service Agreement information on page 4.)</i>	
Out-of-district.....	\$281.00 per credit hour
Out-of-state .....	\$348.00 per credit hour
International .....	\$348.00 per credit hour
Designated programs may have higher rates.	

## Fees *(subject to change without notice.)*

Application (one-time, nonrefundable fee).....	\$25.00
Activity fee, full-time students .....	\$42.00
part-time students .....	\$21.00
Registration fee (nonrefundable).....	\$15.00
Technology fee (per credit hour) .....	\$5.00
Repair/renovation fee (per credit hour) .....	\$5.00
Laboratory and music fees will be indicated at time of registration.	

## Payment Due Dates

If you register from February 25 through May 10, your payment is due by 8 p.m., May 11, 2004. **Students who do not make payment by May 11 will be dropped for non-payment.**

**If you register from May 11 through the end of the term, you must pay all tuition and fees by the close of the next business day.**

**Payment methods include cash, check, Visa, MasterCard or Discover.**

If you are unable to pay all charges when you register, you may apply for a pre-authorized payment plan. There is a \$25 fee for this service. A voided check must be provided. More information about this plan is available at harpercollege.edu/paymentplan or you may call 847.925.6880.

### Payment of tuition and fees may be made:

- Via the Web site: harpercollege.edu
- By telephone: 847.925.1515 (available through June 8)
- In the Business Office, Building A, Room A214

## Dropping Credit Classes

- To be eligible for a refund, students must withdraw during the refund period specified below. Students may drop one or more classes at the Registrar's Office, Building A, Room A213, or by using Web registration or Touchtone registration (when available).
- The Business Office will disperse refunds by mail. Refunds will be processed by check, or, if payment was by credit card, applied to credit card account. Refunds will normally be processed within 10 business days.
- After the refund period, a formal written notice to drop one or more full semester classes or to withdraw from the College must be submitted to the Registrar's Office in person by July 15 at noon. The student's record will show W for withdraw.
- Students who do not attend class and who do not submit an official written notice for dropping a class(es) will not receive any refund and are subject to an F grade.

## Official Refund Schedule—8 Week Classes

100% Refund: through June 8  
75% Refund: June 9 and June 10  
No Refund: after June 10

**Classes meeting on a different schedule will have other, prorated deadlines. See Registrar's Office for details.**

# FlexEd® Summer 2004 Options

## Late Start Classes

The name says it all. Late Start classes begin after the normal start date of the semester. So if you've missed our scheduled registration, look through this schedule or check out our Web site at harpercollege.edu for Late Start classes.

## Internet Courses

A variety of courses are now available to students via the Web. Not only will you have the flexibility of class scheduling, you may also have the opportunity to communicate with your instructor and classmates via e-mail or through discussion forums. If you have access to a computer with specific hardware and software requirements, a modem and online access through an Internet Service Provider (ISP), then Internet courses may be the perfect option for you.

Is online learning for you? Find out. Visit [harpercollege.edu/distancelearning](http://harpercollege.edu/distancelearning)

## Open Entry Classes

Harper has designed this unique class format to meet the needs of many students. Maybe you are unable to attend regularly scheduled classes. Or you want to finish the course work more quickly or you're anxious to start, but the course has already begun. We just require a one-hour orientation, where the instructor will show you around the lab, hand out homework assignments and answer any questions. Open Entry instructors are available for guidance during posted office hours. Open Entry classes are offered in many disciplines. In addition, all Adult Educational Development classes are open entry.

## Telecourses

Harper offers a complete range of courses from economics to psychology that may be viewed on cable TV within the Harper district. Each telecourse has a mandatory, on-campus orientation session to give you an introduction to the instructor and course expectations. Any missed classes can be viewed at the main campus Library or select public libraries. A taped set of classes may also be rented from the Bookstore for a fee. (As of the printing of this course schedule, some residents of Arlington Heights and Inverness may not receive Harper cable broadcasts. Please check with your local cable provider to ensure accessibility.)

## TeleWeb Courses

Several courses are available as a combination of both telecourse and online learning. Students enrolled in a teleweb course attend class by watching cable TV broadcasts within the Harper district or by viewing videotapes at home, at the Harper Library or in select public libraries. Course assignments are accessed via the Web. Students interact with peers/faculty and submit course work to their instructor via several Internet-based communication tools. (As of the printing of this course schedule, some residents of Arlington Heights and Inverness may not receive Harper cable broadcasts. Please check with your local cable provider to ensure accessibility.)

For more information on any of our FlexEd® classes,  
visit our Web site:  
**harpercollege.edu**

## LEGEND

### FlexEd®

- ① Late Start Class
- ② Internet Course
- ③ Open Entry Class
- ④ Telecourse
- ⑤ TeleWeb Course

### DAYS OF THE WEEK

- M Monday
- T Tuesday
- W Wednesday
- R Thursday

## Accounting

For additional information, call John Perricone at 847.925.6353.

### Requirements for the Illinois CPA Certificate

To sit for the first time as a candidate for the Illinois CPA examination, one must have successfully completed at least 150 semester hours of acceptable college level credit, including at least a bachelor's degree. The 150 total hours must include an accounting concentration and a business concentration.

- At least 24 semester hours in accounting at the undergraduate or graduate level, including courses covering the subjects of financial accounting, auditing, taxation and management accounting. At Harper this would include ACC 101, 102, 201, 202, 203, 250, 251, 253 and 254.
- At least 24 semester hours of business courses, or substantially equivalent (other than accounting courses) at the undergraduate or graduate level. Acceptable courses are: Economics, Business Law\*\*, Marketing, Finance, Business and Technical Communications, Business Ethics, International Business, Legal and Social Environment of Business, Management, Information Systems, Quantitative Methods. Other courses are subject to the review by the Illinois Board of Examiners.

\*\*Business Law is a recommended course because it is tested on the CPA Exam.

Any candidate who sat for the CPA exam prior to January 1, 2001, is not required to complete the 150 hour requirement.

### Requirements for the CMA Certificate

The CMA (Certified Management Accountant) is a national program with no state affiliates. The candidate must have senior standing at an accredited college or university, or must hold a baccalaureate degree, in any field, or have passed the U.S. CPA examination. Anyone who has passed the U.S. CPA examination is given credit for part 2 of the CMA examination. Recommended courses at Harper include ACC 101, 102, 201, 202, 203, 211, 212, 251, 253 and 254; ECO 210, 211 and 212; MGT 111, 218, 225 and 270; MTH 124; PHI 110 and CIS 101.

### ACC 101 INTRODUCTION TO FINANCIAL ACCOUNTING

			CREDITS: 4	TOUCHTONE#: 1001
LEC 001	MW	7:10 am-10:30 am	6/7/04-7/29/04	FEES: \$10.00
LEC 002	MW	11:10 am-2:30 pm	6/7/04-7/29/04	FEES: \$10.00
LEC 003	MW	6:20 pm-9:40 pm	6/7/04-7/29/04	FEES: \$10.00
LEC 004	TR	10:15 am-1:35 pm	6/7/04-7/29/04	FEES: \$10.00
LEC 005	TR	6:15 pm-9:35 pm	6/7/04-7/29/04	FEES: \$10.00
LEC 006	TR	6:30 pm-9:50 pm	6/7/04-7/29/04	FEES: \$10.00
① LEC 059	M	5:00 pm-5:50 pm	6/7/04-7/29/04	FEES: \$20.00

ORIENTATION Session 6/7 INTERNET CLASS requiring off-campus Internet connection.  
For information contact instructor at: [jperrico@harpercollege.edu](mailto:jperrico@harpercollege.edu)

### ACC 102 INTRODUCTION TO MANAGERIAL ACCOUNTING

			CREDITS: 3	TOUCHTONE#: 1002
Prerequisite: ACC 101 with a grade of C or better.				
LEC 001	MW	6:30 pm-9:05 pm	6/7/04-7/29/04	FEES: \$10.00
LEC 002	MW	6:30 pm-9:05 pm	6/7/04-7/29/04	FEES: \$10.00
LEC 003	TR	7:10 am-9:45 am	6/7/04-7/29/04	FEES: \$10.00
LEC 004	TR	6:30 pm-9:05 pm	6/7/04-7/29/04	FEES: \$10.00

### ACC 211 BUSINESS LAW I

			CREDITS: 3	TOUCHTONE#: 1009
LEC 001	TR	6:30 pm-9:05 pm	6/7/04-7/29/04	

### ACC 213 LEGAL ENVIRONMENT OF BUSINESS

			CREDITS: 3	TOUCHTONE#: 1011
LEC 001	TR	10:30 am-1:05 pm	6/7/04-7/29/04	

## Administrative Technology

For additional information, call Valorie Eaton at 847.925.6521.

### OFC 111 BEGINNING COMPUTER KEYBOARDING WITH APPLICATIONS

			CREDITS: 3	TOUCHTONE#: 3605
LEC 001	MW	6:15 pm-9:45 pm	6/7/04-7/29/04	FEES: \$20.00
LEC 002	TR	1:10 pm-4:40 pm	6/7/04-7/29/04	FEES: \$20.00

### OFC 134 WORD 2002

			CREDITS: 2	TOUCHTONE#: 3611
Prerequisite: Keyboarding speed of 30 words per minute.				
LEC 001	T	6:25 pm-9:55 pm	6/7/04-7/29/04	FEES: \$20.00

## Anthropology

For additional information, call Helmut Publ at 847.925.6433.

### ANT 101 INTRODUCTION TO ANTHROPOLOGY

			CREDITS: 3	TOUCHTONE#: 1043
LEC 001	MW	6:30 pm-9:05 pm	6/7/04-7/29/04	
LEC 002	TR	10:30 am-1:05 pm	6/7/04-7/29/04	

### ANT 202 CULTURAL ANTHROPOLOGY

			CREDITS: 3	TOUCHTONE#: 1044
LEC 001	TR	1:10 pm-3:45 pm	6/7/04-7/29/04	
LEC 002	TR	6:30 pm-9:05 pm	6/7/04-7/29/04	

### ANT 250 FIELD METHODS IN ARCHEOLOGY I

			CREDITS: 3	TOUCHTONE#:
Prerequisite: ANT 101 with a grade of C or better and/or consent of instructor.				
① LEC 001	TBA		7/5/04-7/16/04	
TO BE ANNOUNCED				
Prehistoric site—Macktown Permission to register is required, contact Charles Norris or Helmut Publ, 847.925.6433				

### ANT 255 FIELD METHODS IN ARCHEOLOGY II

			CREDITS: 3	TOUCHTONE#:
Prerequisite: ANT 101 and ANT 250 with grades of C or better and/or consent of instructor.				
① LEC 001	TBA		7/19/04-7/30/04	
TO BE ANNOUNCED				
Prehistoric site—Macktown Permission to register is required, contact Charles Norris or Helmut Publ, 847.925.6433				

## Architectural Technology

For additional information, call Carl Dittburner at 847.925.6366.

<b>ATE 105</b>	<b>ARCHITECTURAL CAD I</b>	<b>CREDITS: 3</b>	<b>TOUCHSTONE#: 1146</b>
LEC 001 TR	1:10 pm-4:40 pm	6/7/04-7/29/04	FEES: \$35.00
	AutoCAD Software		
LEC 002 MW	6:35 pm-10:05 pm	6/7/04-7/29/04	FEES: \$35.00
	AutoCAD Software		
① LEC 248 TBA		6/7/04-7/29/04	FEES: \$35.00
OPEN ENTRY CLASS AutoCAD Software Student must schedule an orientation session, contact instructor at: cdittbur@harpercollege.edu. This class requires strong, independent computer skills.			
<b>ATE 106</b>	<b>ARCHITECTURAL CAD II</b>	<b>CREDITS: 3</b>	<b>TOUCHSTONE#: 1147</b>
Prerequisite: ATE 105 with a grade of C or better or consent of instructor.			
LEC 001 MW	1:10 pm-4:40 pm	6/7/04-7/29/04	FEES: \$35.00
	AutoCAD Software		
LEC 002 TR	6:35 pm-10:05 pm	6/7/04-7/29/04	FEES: \$35.00
	AutoCAD Software		
① LEC 248 TBA		6/7/04-7/29/04	FEES: \$35.00
OPEN ENTRY CLASS AutoCAD Software Student must schedule an orientation session, contact instructor at: cdittbur@harpercollege.edu. This class requires strong, independent computer skills.			
<b>ATE 214</b>	<b>ARCHITECTURAL MODELS</b>	<b>CREDITS: 3</b>	<b>TOUCHSTONE#: 1165</b>
① LEC 248 TBA		6/7/04-7/29/04	FEES: \$35.00
OPEN ENTRY CLASS Student must schedule an orientation session, contact instructor at: tmaning@harpercollege.edu. This class requires strong, independent computer skills.			

## Art

For additional information, call Ken Dahlberg at 847.925.6308.

<b>ART 105</b>	<b>INTRODUCTION TO ARTS</b>	<b>CREDITS: 3</b>	<b>TOUCHSTONE#: 1077</b>
LEC 001 MW	6:30 pm-9:05 pm	6/7/04-7/29/04	
LEC 002 MW	1:10 pm-3:45 pm	6/7/04-7/29/04	
<b>ART 110</b>	<b>DRAWING I</b>	<b>CREDITS: 3</b>	<b>TOUCHSTONE#: 1078</b>
LEC 001 MTW	1:10 pm-4:55 pm	6/7/04-7/29/04	FEES: \$20.00
<b>ART 121</b>	<b>DESIGN I</b>	<b>CREDITS: 3</b>	<b>TOUCHSTONE#: 1080</b>
LEC 001 MTW	9:10 am-12:50 pm	6/7/04-7/29/04	FEES: \$20.00
<b>ART 291</b>	<b>CERAMICS STUDIO</b>	<b>CREDITS: 3</b>	<b>TOUCHSTONE#: 1089</b>
Prerequisite: ART 122 with a grade of C or better or consent of instructor.			
LEC 001 MTW	9:10 am-12:50 pm	6/7/04-7/29/04	FEES: \$50.00
<b>ART 296</b>	<b>SCULPTURE STUDIO</b>	<b>CREDITS: 3</b>	<b>TOUCHSTONE#: 1090</b>
Prerequisite: ART 122 with a grade of C or better or consent of instructor.			
LEC 001 MTW	9:10 am-12:50 pm	6/7/04-7/29/04	FEES: \$50.00

## Astronomy

For additional information, call Paul Siplera at 847.925.6726.

<b>AST 101</b>	<b>INTRODUCTORY ASTRONOMY</b>	<b>CREDITS: 4</b>	<b>TOUCHSTONE#: 1115</b>
LEC 001 TWR	1:00 pm-4:15 pm	6/7/04-7/29/04	FEES: \$25.00
LEC 002 MTR	6:30 pm-9:45 pm	6/7/04-7/29/04	FEES: \$25.00

## Biology

<b>BIO 101</b>	<b>BIOLOGY SURVEY</b>	<b>CREDITS: 3</b>	<b>TOUCHSTONE#: 1375</b>
LEC 001 MW	6:30 pm-9:05 pm	6/7/04-7/29/04	FEES: \$7.75
Not Lab Science Credit			
LEC 002 TR	7:50 am-10:25 am	6/7/04-7/29/04	FEES: \$7.75
Not Lab Science Credit			
LEC 003 TR	10:30 am-1:05 pm	6/7/04-7/29/04	FEES: \$7.75
Not Lab Science Credit			
LEC 004 TR	1:10 pm-3:45 pm	6/7/04-7/29/04	FEES: \$7.75
Not Lab Science Credit			
LEC 005 TR	6:30 pm-9:05 pm	6/7/04-7/29/04	FEES: \$7.75
<b>BIO 103</b>	<b>MAN AND ENVIRONMENT</b>	<b>CREDITS: 3</b>	<b>TOUCHSTONE#: 1376</b>
LEC 001 MW	1:10 pm-3:45 pm	6/7/04-7/29/04	FEES: \$8.75
Not Lab Science Credit			
<b>BIO 105</b>	<b>HEREDITY, EVOLUTION AND CULTURE</b>	<b>CREDITS: 3</b>	<b>TOUCHSTONE#: 1377</b>
① LEC 080 MW	7:50 am-10:25 am	7/5/04-7/29/04	FEES: \$7.75
Not Lab Science Credit			
	TR	7:50 am-10:25 am	7/5/04-7/29/04
Not Lab Science Credit			
<b>BIO 110</b>	<b>PRINCIPLES OF BIOLOGY</b>	<b>CREDITS: 4</b>	<b>TOUCHSTONE#: 1378</b>
Prerequisite: High school biology with a grade of C or better or BIO 101 with a grade of C or better or consent of instructor.			
LEC 001 MTWR	11:50 am-1:05 pm	6/7/04-7/29/04	
Lab Science Credit			
(REQUIRES ONE OF THE FOLLOWING LABS)			
LAB 151 MW	9:10 am-11:40 am	6/7/04-7/29/04	FEES: \$33.50
LAB 152 TR	9:10 am-11:40 am	6/7/04-7/29/04	FEES: \$33.50
LEC 002 MW	6:30 pm-9:05 pm	6/7/04-7/29/04	
Lab Science Credit			
(REQUIRES THE FOLLOWING LAB)			
LAB 161 TR	6:30 pm-9:05 pm	6/7/04-7/29/04	FEES: \$33.50

<b>BIO 130</b>	<b>MICROBIOLOGY</b>	<b>CREDITS: 4</b>	<b>TOUCHSTONE#: 1380</b>
Prerequisite: High school biology with a grade of C or better or BIO 101 or BIO 110 with a grade of C or better or consent of instructor. College chemistry or equivalent is desirable.			
LEC 001 MTWR	10:35 am-11:25 am	6/7/04-7/29/04	
Lab Science Credit			
(REQUIRES ONE OF THE FOLLOWING LABS)			
LAB 151 MTWR	8:30 am-10:10 am	6/7/04-7/29/04	FEES: \$43.25
LAB 152 MTWR	12:00 pm-1:40 pm	6/7/04-7/29/04	FEES: \$43.25
<b>BIO 135</b>	<b>INTRODUCTION TO HUMAN ANATOMY AND PHYSIOLOGY</b>	<b>CREDITS: 4</b>	<b>TOUCHSTONE#: 1381</b>
Prerequisite: High school biology with a grade of C or better or BIO 101 with a grade of C or better or consent of instructor.			
LEC 001 MW	1:00 pm-4:20 pm	6/7/04-7/29/04	FEES: \$9.75
Not Lab Science Credit			
<b>BIO 140</b>	<b>GENERAL ZOOLOGY</b>	<b>CREDITS: 4</b>	<b>TOUCHSTONE#: 1383</b>
Prerequisite: High school biology with a grade of C or better or BIO 101 with a grade of C or better or consent of instructor.			
LEC 001 MTWR	9:10 am-10:25 am	6/7/04-7/29/04	
Lab Science Credit			
(REQUIRES THE FOLLOWING LAB)			
LAB 151 MTWR	10:30 am-11:45 am	6/7/04-7/29/04	FEES: \$31.50
<b>BIO 160</b>	<b>HUMAN ANATOMY</b>	<b>CREDITS: 4</b>	<b>TOUCHSTONE#: 1384</b>
Prerequisite: High school biology with a C or better or BIO 101 with a grade of C or better or consent of instructor.			
LEC 001 MTWR	9:10 am-10:25 am	6/7/04-7/29/04	
Lab Science Credit			
(REQUIRES ONE OF THE FOLLOWING LABS)			
LAB 151 MW	10:40 am-12:20 pm	6/7/04-7/29/04	FEES: \$26.75
LAB 152 TR	10:40 am-12:20 pm	6/7/04-7/29/04	FEES: \$26.75
<b>BIO 161</b>	<b>HUMAN PHYSIOLOGY</b>	<b>CREDITS: 4</b>	<b>TOUCHSTONE#: 1385</b>
Prerequisite: BIO 160 with a grade of C or better or consent of instructor.			
LEC 001 MTW	10:35 am-12:15 pm	6/7/04-7/29/04	
Lab Science Credit			
(REQUIRES ONE OF THE FOLLOWING LABS)			
LAB 151 MW	8:30 am-10:10 am	6/7/04-7/29/04	FEES: \$25.75
LAB 152 TR	8:30 am-10:10 am	6/7/04-7/29/04	FEES: \$25.75

## Cardiac Technology

The Cardiac Technology Program is a limited enrollment program. To enroll in most courses, students must meet special admission requirements. For additional information, contact the Admissions Office, 847.925.6202, or the coordinator of the program, Kelly Hamontree, 847.925.6585.

## Career Development

<b>CDV 110</b>	<b>CAREER DEVELOPMENT</b>	<b>CREDITS: 2</b>	<b>TOUCHSTONE#: 2878</b>
LEC 001 T	6:00 pm-9:20 pm	6/7/04-7/29/04	FEES: \$20.00

## Certified Nursing Assistant

Certified Nursing Assistant is a limited enrollment program. Contact the Admissions Office, 847.925.6206, for more information. Note: Morning, afternoon and/or evening classes are scheduled based on student interest.

## Chemistry

All chemistry classes include a lab. For additional information, call Julie Ellefson-Kuehn at 847.925.6694.

<b>CHM 100</b>	<b>CHEMISTRY FOR THE HEALTH SCIENCES</b>	<b>CREDITS: 4</b>	<b>TOUCHSTONE#: 1486</b>
LEC 001 MW	7:50 am-10:25 am	6/7/04-7/29/04	FEES: \$33.00
	TR	7:50 am-10:25 am	6/7/04-7/29/04
LEC 002 MW	10:30 am-1:05 pm	6/7/04-7/29/04	FEES: \$33.00
	TR	10:30 am-1:05 pm	6/7/04-7/29/04
LEC 003 MW	3:50 pm-6:25 pm	6/7/04-7/29/04	FEES: \$33.00
	TR	3:50 pm-6:25 pm	6/7/04-7/29/04
LEC 004 MW	6:30 pm-9:05 pm	6/7/04-7/29/04	FEES: \$33.00
	TR	6:30 pm-9:05 pm	6/7/04-7/29/04
<b>CHM 110</b>	<b>FUNDAMENTALS OF CHEMISTRY</b>	<b>CREDITS: 4</b>	<b>TOUCHSTONE#: 1487</b>
Prerequisite: MTH 080 or MTH 087 with a grade of C or better or concurrent enrollment.			
LEC 001 MW	7:50 am-10:25 am	6/7/04-7/29/04	FEES: \$33.00
	TR	7:50 am-10:25 am	6/7/04-7/29/04
LEC 002 MW	6:30 pm-9:05 pm	6/7/04-7/29/04	FEES: \$33.00
	TR	6:30 pm-9:05 pm	6/7/04-7/29/04
<b>CHM 121</b>	<b>GENERAL CHEMISTRY I</b>	<b>CREDITS: 5</b>	<b>TOUCHSTONE#: 1488</b>
Prerequisite: Two semesters of high school chemistry or CHM 110 and MTH 080 or MTH 087 with grades of C or better, or consent of instructor.			
LEC 001 MW	8:55 am-12:00 pm	6/7/04-7/29/04	FEES: \$33.00
	TR	8:55 am-12:00 pm	6/7/04-7/29/04
LEC 002 MW	12:05 pm-3:10 pm	6/7/04-7/29/04	FEES: \$33.00
	TR	12:05 pm-3:10 pm	6/7/04-7/29/04
LEC 003 MW	3:15 pm-6:20 pm	6/7/04-7/29/04	FEES: \$33.00
	TR	3:15 pm-6:20 pm	6/7/04-7/29/04
LEC 004 MW	6:25 pm-9:30 pm	6/7/04-7/29/04	FEES: \$33.00
	TR	6:25 pm-9:30 pm	6/7/04-7/29/04

CHM 122 GENERAL CHEMISTRY II		CREDITS: 5	TOUCHTONE#: 1489
Prerequisite: CHM 121 with a grade of C or better, or consent of instructor.			
LEC 001	MW	7:30 am-10:35 am	6/7/04-7/29/04 FEES: \$33.00
	TR	7:30 am-10:35 am	6/7/04-7/29/04
LEC 002	MW	11:00 am-2:05 pm	6/7/04-7/29/04 FEES: \$33.00
	TR	11:00 am-2:05 pm	6/7/04-7/29/04
LEC 003	MW	3:00 pm-6:05 pm	6/7/04-7/29/04 FEES: \$33.00
	TR	3:00 pm-6:05 pm	6/7/04-7/29/04
LEC 004	MW	6:25 pm-9:30 pm	6/7/04-7/29/04 FEES: \$33.00
	TR	6:25 pm-9:30 pm	6/7/04-7/29/04

## Computer Information Systems

For additional information, call Sue Bajt at 847.925.6684.

CIS 100 COMPUTER LITERACY		CREDITS: 3	TOUCHTONE#: 1521
LEC 001	MW	8:45 am-12:15 pm	6/7/04-7/29/04 FEES: \$25.00
LEC 002	TR	6:45 pm-10:15 pm	6/7/04-7/29/04 FEES: \$25.00
①②	LEC 240	TBA	6/7/04-7/29/04 FEES: \$25.00
OPEN ENTRY INTERNET CLASS requiring off-campus Internet connection. For information contact instructor at: 847.925.6842 or bcurtin@harpercollege.edu or go to: harpercollege.edu/bus-ss/cis/info/open.htm			
CIS 101 INTRODUCTION TO COMPUTER INFORMATION SYSTEMS		CREDITS: 3	TOUCHTONE#: 1522
LEC 001	MW	8:45 am-12:15 pm	6/7/04-7/29/04 FEES: \$25.00
LEC 002	TR	8:45 am-12:15 pm	6/7/04-7/29/04 FEES: \$25.00
LEC 003	MW	6:45 pm-10:15 pm	6/7/04-7/29/04 FEES: \$25.00
NORTHEAST CENTER			
LEC 004	TR	6:25 pm-9:55 pm	6/7/04-7/29/04 FEES: \$25.00
CIS 102 NETPREP NETWORKING FUNDAMENTALS		CREDITS: 3	TOUCHTONE#: 1590
LEC 001	MW	6:00 pm-8:30 pm	6/7/04-7/29/04 FEES: \$20.00
①②	LEC 240	TBA	6/7/04-7/29/04 FEES: \$20.00
OPEN ENTRY INTERNET CLASS requiring off-campus Internet connection. For information go to: harpercollege.edu/bus-ss/cis/102/web			
CIS 105 INTRODUCTION TO MULTIMEDIA		CREDITS: 3	TOUCHTONE#: 1582
Prerequisite: CIS 100, CIS 101 or CIS 119 with a grade of C or better.			
①	LEC 059	TBA	6/7/04-7/29/04 FEES: \$25.00
Macromedia Flash MX INTERNET CLASS requiring off-campus Internet connection. For information go to: harpercollege.edu/bus-ss/cis/105/web			
CIS 106 COMPUTER LOGIC AND PROGRAMMING TECHNOLOGY		CREDITS: 3	TOUCHTONE#: 1523
Prerequisite: CIS 101 or concurrent enrollment, and MTH 080 or MTH 087 with a grade of C or better.			
LEC 001	TR	6:45 pm-10:15 pm	6/7/04-7/29/04 FEES: \$25.00
CIS 107 NETPREP LOCAL AREA NETWORKS		CREDITS: 3	TOUCHTONE#: 1591
Prerequisite: CIS 102 with a grade of C or better or consent of instructor.			
LEC 001	MW	6:30 pm-10:00 pm	6/7/04-7/29/04 FEES: \$50.00
①②	LEC 240	TBA	6/7/04-7/29/04 FEES: \$50.00
OPEN ENTRY INTERNET CLASS requiring off-campus Internet connection. For information go to: harpercollege.edu/bus-ss/cis/107/web/			
CIS 115 NETPREP WIDE AREA NETWORKS		CREDITS: 3	TOUCHTONE#: 1592
Prerequisite: CIS 107 with a grade of C or better or consent of instructor.			
①②	LEC 240	TBA	6/7/04-7/29/04 FEES: \$50.00
OPEN ENTRY INTERNET CLASS requiring off-campus Internet connection. For information go to: harpercollege.edu/bus-ss/cis/115/web/			
CIS 117 INTRODUCTION TO WINDOWS XP		CREDITS: 1	TOUCHTONE#: 1529
②	LEC 249	TBA	6/7/04-7/29/04 FEES: \$15.00
OPEN ENTRY CLASS, for information call 847.925.6801 or go to: harpercollege.edu/bus-ss/cis/info/open.htm			
CIS 118 INTRODUCTION TO THE INTERNET		CREDITS: 1	TOUCHTONE#: 1587
LEC 001	W	6:00 pm-8:30 pm	6/7/04-7/29/04 FEES: \$15.00
①②	LEC 240	TBA	6/7/04-7/29/04 FEES: \$15.00
OPEN ENTRY INTERNET CLASS requiring off-campus Internet connection. For information contact instructor at: bcierny@harpercollege.edu or go to: harpercollege.edu/bus-ss/cis/info/open.htm			
CIS 119 WEB SITE DEVELOPMENT I		CREDITS: 3	TOUCHTONE#: 1588
Prerequisite: CIS 100, CIS 101 or CIS 118 with a grade of C or better, or consent of instructor.			
LEC 001	MW	5:00 pm-8:30 pm	6/7/04-7/29/04 FEES: \$25.00
Introduction to HTML and Dreamweaver			
LEC 002	TR	5:00 pm-8:30 pm	6/7/04-7/29/04 FEES: \$25.00
Introduction to HTML and Dreamweaver			
①	LEC 059	TBA	6/7/04-7/29/04 FEES: \$25.00
Introduction to HTML and Dreamweaver INTERNET CLASS requiring off-campus Internet connection. For information go to: harpercollege.edu/online/cis119			

CIS 120 MICROSOFT OFFICE XP		CREDITS: 3	TOUCHTONE#: 1530
LEC 001	MW	9:00 am-12:30 pm	6/7/04-7/29/04 FEES: \$30.00
Excel, Word, Access, Powerpoint			
LEC 002	MW	5:00 pm-8:30 pm	6/7/04-7/29/04 FEES: \$30.00
NORTHEAST CENTER			
Excel, Word, Access, Powerpoint			
①②	LEC 240	TBA	6/7/04-7/29/04 FEES: \$30.00
Excel, Word, Access, Powerpoint OPEN ENTRY INTERNET CLASS requiring off-campus Internet connection. For information contact instructor at: bcierny@harpercollege.edu or go to: harpercollege.edu/bus-ss/cis/info/open.htm			
②	LEC 248	TBA	6/7/04-7/29/04 FEES: \$30.00
Excel, Word, Access, Powerpoint OPEN ENTRY CLASS, for information call 847.925.6801 or go to: harpercollege.edu/bus-ss/cis/info/open.htm			
CIS 120 MICROSOFT OFFICE 2003		CREDITS: 3	TOUCHTONE#: 1530
①②	LEC 241	TBA	6/7/04-7/29/04 FEES: \$30.00
OPEN ENTRY INTERNET CLASS requiring off-campus Internet connection. For information contact instructor at: bcierny@harpercollege.edu or go to: harpercollege.edu/bus-ss/cis/info/open.htm			
CIS 120 MICROSOFT OFFICE 2000		CREDITS: 3	TOUCHTONE#: 1530
②	LEC 249	TBA	6/7/04-7/29/04 FEES: \$30.00
Excel, Word, Access, Powerpoint OPEN ENTRY CLASS, for information call 847.925.6801 or go to: harpercollege.edu/bus-ss/cis/info/open.htm			
CIS 122 ACCESS 2003		CREDITS: 1	TOUCHTONE#: 1532
①②	LEC 241	TBA	6/7/04-7/29/04 FEES: \$15.00
OPEN ENTRY INTERNET CLASS requiring off campus Internet connection. For information contact instructor at: cmiller@harpercollege.edu or go to: harpercollege.edu/bus-ss/cis/info/open.htm			
CIS 122 ACCESS 2002		CREDITS: 1	TOUCHTONE#: 1532
②	LEC 080	MW	5:30 pm-8:00 pm 7/5/04-7/29/04 FEES: \$15.00
①②	LEC 240	TBA	6/7/04-7/29/04 FEES: \$15.00
OPEN ENTRY INTERNET CLASS requiring off-campus Internet connection. For information contact instructor at: cmiller@harpercollege.edu or go to: harpercollege.edu/bus-ss/cis/122/web			
②	LEC 249	TBA	6/7/04-7/29/04 FEES: \$15.00
OPEN ENTRY CLASS, for information call 847.925.6801 or go to: harpercollege.edu/bus-ss/cis/info/open.htm			
CIS 122 ACCESS 2000		CREDITS: 1	TOUCHTONE#: 1532
②	LEC 248	TBA	6/7/04-7/29/04 FEES: \$15.00
OPEN ENTRY CLASS, for information call 847.925.6801 or go to: harpercollege.edu/bus-ss/cis/info/open.htm			
CIS 123 EXCEL 2003		CREDITS: 1	TOUCHTONE#: 1533
①②	LEC 242	TBA	6/7/04-7/29/04 FEES: \$15.00
OPEN ENTRY INTERNET CLASS requiring off campus Internet connection. For information contact instructor at: bcierny@harpercollege.edu or go to: harpercollege.edu/bus-ss/cis/info/open.htm			
CIS 123 EXCEL 2002		CREDITS: 1	TOUCHTONE#: 1533
LEC 070	MW	5:30 pm-8:00 pm	6/7/04-7/11/04 FEES: \$15.00
①②	LEC 241	TBA	6/7/04-7/29/04 FEES: \$15.00
OPEN ENTRY INTERNET CLASS requiring off-campus Internet connection. For information contact instructor at: bcierny@harpercollege.edu or go to: harpercollege.edu/bus-ss/cis/info/open.htm			
②	LEC 249	TBA	6/7/04-7/29/04 FEES: \$15.00
OPEN ENTRY CLASS, for information call 847.925.6801 or go to: harpercollege.edu/bus-ss/cis/info/open.htm			
CIS 123 EXCEL 2000		CREDITS: 1	TOUCHTONE#: 1533
①②	LEC 240	TBA	6/7/04-7/29/04 FEES: \$15.00
OPEN ENTRY INTERNET CLASS requiring off-campus Internet connection. For information contact instructor at: bcierny@harpercollege.edu or go to: harpercollege.edu/bus-ss/cis/info/open.htm			
②	LEC 248	TBA	6/7/04-7/29/04 FEES: \$15.00
OPEN ENTRY CLASS, for information call 847.925.6801 or go to: harpercollege.edu/bus-ss/cis/info/open.htm			
CIS 124 ADVANCED EXCEL 2002		CREDITS: 1	TOUCHTONE#: 1534
Prerequisite: CIS 120 or CIS 123 with grades of C or better.			
①②	LEC 241	TBA	6/7/04-7/29/04 FEES: \$15.00
OPEN ENTRY INTERNET CLASS requiring off-campus Internet connection. For information contact instructor at: bcierny@harpercollege.edu or go to: harpercollege.edu/bus-ss/cis/info/open.htm			
②	LEC 249	TBA	6/7/04-7/29/04 FEES: \$15.00
OPEN ENTRY CLASS, for information call 847.925.6801 or go to: harpercollege.edu/bus-ss/cis/info/open.htm			
CIS 124 ADVANCED EXCEL 2000		CREDITS: 1	TOUCHTONE#: 1534
Prerequisite: CIS 120 or CIS 123 with grades of C or better.			
①②	LEC 240	TBA	6/7/04-7/29/04 FEES: \$15.00
OPEN ENTRY INTERNET CLASS requiring off-campus Internet connection. For information contact instructor at: bcierny@harpercollege.edu or go to: harpercollege.edu/bus-ss/cis/info/open.htm			
②	LEC 248	TBA	6/7/04-7/29/04 FEES: \$15.00
OPEN ENTRY CLASS, for information call 847.925.6801 or go to: harpercollege.edu/bus-ss/cis/info/open.htm			
CIS 125 WORD 2003		CREDITS: 1	TOUCHTONE#: 1535
①②	LEC 241	TBA	6/7/04-7/29/04 FEES: \$15.00
OPEN ENTRY INTERNET CLASS requiring off campus Internet connection. For information contact instructor at 847.925.6842 or bcurtin@harpercollege.edu or go to: harpercollege.edu/bus-ss/cis/info/open.htm			
CIS 125 WORD 2002		CREDITS: 1	TOUCHTONE#: 1535
LEC 070	TR	6:00 pm-8:30 pm	6/7/04-7/11/04 FEES: \$15.00
①②	LEC 240	TBA	6/7/04-7/29/04 FEES: \$15.00
OPEN ENTRY INTERNET CLASS requiring off campus Internet connection. For information contact instructor at 847.925.6842 or bcurtin@harpercollege.edu or go to: harpercollege.edu/bus-ss/cis/info/open.htm			
②	LEC 249	TBA	6/7/04-7/29/04 FEES: \$15.00
OPEN ENTRY CLASS, for information call 847.925.6801 or go to: harpercollege.edu/bus-ss/cis/info/open.htm			

## LEGEND

### FlexEd®

- ① Late Start Class
- ② Internet Course
- ③ Open Entry Class
- ④ Telecourse
- ⑤ TeleWeb Course

### DAYS OF THE WEEK

- M Monday
- T Tuesday
- W Wednesday
- R Thursday



<b>CIS 126</b>	<b>PHOTOSHOP</b> LEC 070 TR 9:30 am-12:00 pm For IBM PC's Version 7.0	<b>CREDITS: 1</b> 6/7/04-7/1/04	<b>TOUCHTONE#: 1536</b> FEES: \$15.00	<b>CIS 154</b>	<b>PAGEMAKER 7.0</b> LEC 248 TBA OPEN ENTRY CLASS, for information call 847.925.6801 or go to: harpercollege.edu/bus-ss/cis/info/open.htm	<b>CREDITS: 3</b> 6/7/04-7/29/04	<b>TOUCHTONE#: 1559</b> FEES: \$25.00
<b>CIS 126</b>	<b>POWERPOINT 2003</b> LEC 242 TBA OPEN ENTRY INTERNET CLASS requiring off-campus Internet connection. For information contact instructor at: lkaczmar@harpercollege.edu or go to: harpercollege.edu/bus-ss/cis/info/open.htm	<b>CREDITS: 1</b> 6/7/04-7/29/04	<b>TOUCHTONE#: 1536</b> FEES: \$15.00	<b>CIS 154</b>	<b>QUARKXPRESS 4.04</b> LEC 249 TBA For IBM PC's OPEN ENTRY CLASS, for information call 847.925.6801 or go to: harpercollege.edu/bus-ss/cis/info/open.htm	<b>CREDITS: 3</b> 6/7/04-7/29/04	<b>TOUCHTONE#: 1559</b> FEES: \$25.00
<b>CIS 126</b>	<b>POWERPOINT 2002</b> LEC 080 TR 6:00 pm-8:30 pm LEC 241 TBA OPEN ENTRY INTERNET CLASS requiring off-campus Internet connection. For information contact instructor at: lkaczmar@harpercollege.edu or go to: harpercollege.edu/bus-ss/cis/info/open.htm	<b>CREDITS: 1</b> 7/5/04-7/29/04 6/7/04-7/29/04	<b>TOUCHTONE#: 1536</b> FEES: \$15.00 FEES: \$15.00	<b>CIS 155</b>	<b>NETPREP TCP/IP</b> Prerequisite: CIS 107 with a grade of C or better or consent of instructor. LEC 240 TBA OPEN ENTRY INTERNET CLASS requiring off-campus Internet connection. For information go to: harpercollege.edu/bus-ss/cis/155/web	<b>CREDITS: 3</b> 6/7/04-7/29/04	<b>TOUCHTONE#: 1594</b> FEES: \$50.00
<b>CIS 126</b>	<b>POWERPOINT 2000</b> LEC 240 TBA OPEN ENTRY INTERNET CLASS requiring off-campus Internet connection. For information contact instructor at: lkaczmar@harpercollege.edu or go to: harpercollege.edu/bus-ss/cis/info/open.htm	<b>CREDITS: 1</b> 6/7/04-7/29/04	<b>TOUCHTONE#: 1536</b> FEES: \$15.00	<b>CIS 156</b>	<b>NETPREP—THE INTERNET</b> Prerequisite: CIS 155 with a grade of C or better or consent of instructor. LEC 240 TBA OPEN ENTRY INTERNET CLASS requiring off-campus Internet connection. For information go to: harpercollege.edu/bus-ss/cis/156/web	<b>CREDITS: 3</b> 6/7/04-7/29/04	<b>TOUCHTONE#: 1595</b> FEES: \$50.00
<b>CIS 128</b>	<b>COMMAND LINE BASICS</b> LEC 240 TBA OPEN ENTRY INTERNET CLASS requiring off-campus Internet connection. For information call 847.925.6801 or go to: harpercollege.edu/bus-ss/cis/info/open.htm	<b>CREDITS: 1</b> 6/7/04-7/29/04	<b>TOUCHTONE#: 1538</b> FEES: \$15.00	<b>CIS 157</b>	<b>NETPREP INTERNETWORKING DEVICES AND CONCEPTS</b> Prerequisite: CIS 155 with a grade of C or better or consent of instructor. LEC 240 TBA OPEN ENTRY INTERNET CLASS requiring off-campus Internet connection. For information go to: harpercollege.edu/bus-ss/cis/157/web	<b>CREDITS: 3</b> 6/7/04-7/29/04	<b>TOUCHTONE#: 1596</b> FEES: \$50.00
<b>CIS 130</b>	<b>VISUAL BASIC PROGRAMMING I</b> Prerequisite: CIS 101 and CIS 106 and either MTH 080 or MTH 087 with grades of C or better or consent of instructor. LEC 001 MW 6:00 pm-10:20 pm VB.NET	<b>CREDITS: 4</b> 6/7/04-7/29/04	<b>TOUCHTONE#: 1540</b> FEES: \$25.00	<b>CIS 158</b>	<b>NETPREP—PROTOCOL ANALYSIS</b> Prerequisite: CIS 155 with a grade of C or better or consent of instructor. LEC 240 TBA OPEN ENTRY INTERNET CLASS requiring off-campus Internet connection. For information go to: harpercollege.edu/bus-ss/cis/158/web	<b>CREDITS: 3</b> 6/7/04-7/29/04	<b>TOUCHTONE#: 1603</b> FEES: \$50.00
<b>CIS 134</b>	<b>COMMAND LINE SCRIPTING</b> LEC 240 TBA OPEN ENTRY INTERNET CLASS requiring off-campus Internet connection. For information contact instructor at: ghenegha@harpercollege.edu or go to: harpercollege.edu/bus-ss/cis/134	<b>CREDITS: 3</b> 6/7/04-7/29/04	<b>TOUCHTONE#: 1544</b> FEES: \$25.00	<b>CIS 159</b>	<b>NETPREP NETWORK ANALYSIS AND DESIGN</b> Prerequisite: CIS 157 with a grade of C or better or consent of instructor. LEC 240 TBA OPEN ENTRY INTERNET CLASS requiring off-campus Internet connection. For information go to: harpercollege.edu/bus-ss/cis/159/web	<b>CREDITS: 3</b> 6/7/04-7/29/04	<b>TOUCHTONE#: 1597</b> FEES: \$50.00
<b>CIS 137</b>	<b>COMPUTER INTERNSHIP I</b> Prerequisite: Minimum of 6 credit hours of CIS courses with a GPA of 2.5 or better. Consent of coordinator and internship instructor. LEC 001 TBA HELP Desk/Programming/Web Development LEC 002 TBA Networking	<b>CREDITS: 3</b> 6/7/04-7/29/04 6/7/04-7/29/04	<b>TOUCHTONE#:</b>	<b>CIS 162</b>	<b>PC OPERATING SYSTEM</b> Prerequisite: CIS 155 with a grade of C or better, or consent of instructor. LEC 240 TBA OPEN ENTRY INTERNET CLASS requiring off-campus Internet connection. For information go to: harpercollege.edu/bus-ss/cis/162/web	<b>CREDITS: 3</b> 6/7/04-7/29/04	<b>TOUCHTONE#: 1547</b> FEES: \$25.00
<b>CIS 139</b>	<b>WEB AUTHORIZING TOOLS</b> Prerequisite: CIS 119 with a grade of C or better, or consent of instructor. LEC 059 TBA Dreamweaver MX INTERNET CLASS requiring off-campus Internet connection. For information go to: harpercollege.edu/bus-ss/cis/139/web	<b>CREDITS: 3</b> 6/7/04-7/29/04	<b>TOUCHTONE#: 1560</b> FEES: \$25.00	<b>CIS 163</b>	<b>NETWORK OPERATING SYSTEM</b> Prerequisite: CIS 162 with a grade of C or better, or consent of instructor. LEC 240 TBA OPEN ENTRY INTERNET CLASS requiring off-campus Internet connection. For information go to: harpercollege.edu/bus-ss/cis/163/web	<b>CREDITS: 3</b> 6/7/04-7/29/04	<b>TOUCHTONE#: 1549</b> FEES: \$25.00
<b>CIS 141</b>	<b>ADVANCED ACCESS 2002</b> Prerequisite: CIS 120 or CIS 122 with a grade of C or better. LEC 240 TBA OPEN ENTRY INTERNET CLASS requiring off-campus Internet connection. For information go to: harpercollege.edu/bus-ss/cis/info/open.htm	<b>CREDITS: 1</b> 6/7/04-7/29/04	<b>TOUCHTONE#: 1604</b> FEES: \$15.00	<b>CIS 165</b>	<b>LINUX FUNDAMENTALS</b> Prerequisite: CIS 155 with a grade of C or better, or consent of instructor. LEC 240 TBA OPEN ENTRY INTERNET CLASS requiring off-campus Internet connection. For information contact instructor at: jsmith2@harpercollege.edu	<b>CREDITS: 3</b> 6/7/04-7/29/04	<b>TOUCHTONE#: 1556</b> FEES: \$25.00
<b>CIS 141</b>	<b>ADVANCED ACCESS 2000</b> Prerequisite: CIS 120 or CIS 122 with a grade of C or better. LEC 248 TBA OPEN ENTRY INTERNET CLASS, for information call 847.925.6801 or go to: harpercollege.edu/bus-ss/cis/info/open.htm	<b>CREDITS: 1</b> 6/7/04-7/29/04	<b>TOUCHTONE#: 1604</b> FEES: \$15.00	<b>CIS 166</b>	<b>C++ PROGRAMMING I</b> Prerequisite: CIS 101 and CIS 106 or CIS 130 with grades of C or better. LEC 001 TR 6:00 pm-10:20 pm	<b>CREDITS: 4</b> 6/7/04-7/29/04	<b>TOUCHTONE#: 1561</b> FEES: \$25.00
<b>CIS 143</b>	<b>INTRODUCTION TO DATABASE MANAGEMENT</b> Prerequisite: CIS 106 and either CIS 120 or CIS 122 with grades of C or better, or consent of instructor. LEC 240 TBA OPEN ENTRY INTERNET CLASS requiring off-campus Internet connection. For information go to: harpercollege.edu/bus-ss/cis/143/web	<b>CREDITS: 3</b> 6/7/04-7/29/04	<b>TOUCHTONE#: 1636</b> FEES: \$25.00	<b>CIS 168</b>	<b>JAVA PROGRAMMING I</b> Prerequisite: CIS 106 with a grade of C or better, or consent of instructor. LEC 001 MW 9:00 am-1:20 pm LEC 002 MW 6:00 pm-10:20 pm	<b>CREDITS: 4</b> 6/7/04-7/29/04 6/7/04-7/29/04	<b>TOUCHTONE#: 1589</b> FEES: \$25.00 FEES: \$25.00
<b>CIS 144</b>	<b>ADVANCED PC OPERATING SYSTEMS</b> Prerequisite: CIS 134 and three credit hours chosen from CIS 101, CIS 120, CIS 122, CIS 123 and CIS 125 with grades of C or better, or consent of instructor. LEC 240 TBA OPEN ENTRY INTERNET CLASS requiring off-campus Internet connection. For information go to: harpercollege.edu/bus-ss/cis/144/web	<b>CREDITS: 3</b> 6/7/04-7/29/04	<b>TOUCHTONE#: 1550</b> FEES: \$50.00	<b>CIS 171</b>	<b>INTRODUCTION TO LOCAL AREA NETWORKS</b> Prerequisite: CIS 170 and either CIS 128 or CIS 134 with grades of C or better or consent of instructor. (Concurrent enrollment in CIS 170 is allowable.) LEC 240 TBA OPEN ENTRY INTERNET CLASS requiring off-campus Internet connection. For information go to: harpercollege.edu/bus-ss/cis/171/web	<b>CREDITS: 3</b> 6/7/04-7/29/04	<b>TOUCHTONE#: 1563</b> FEES: \$50.00
<b>CIS 145</b>	<b>PC HARDWARE</b> Prerequisite: CIS 134 and three credit hours chosen from: CIS 101, CIS 120, CIS 122, CIS 123 and CIS 125 with grades of C or better, or consent of instructor. LEC 240 TBA OPEN ENTRY INTERNET CLASS requiring off-campus Internet connection. For information go to: harpercollege.edu/bus-ss/cis/145/web	<b>CREDITS: 3</b> 6/7/04-7/29/04	<b>TOUCHTONE#: 1551</b> FEES: \$50.00	<b>CIS 172</b>	<b>NETWORK ADMINISTRATION</b> Prerequisite: CIS 171 with a grade of C or better. LEC 240 TBA OPEN ENTRY INTERNET CLASS requiring off-campus Internet connection. For information go to: harpercollege.edu/bus-ss/cis/172/web	<b>CREDITS: 3</b> 6/7/04-7/29/04	<b>TOUCHTONE#: 1585</b> FEES: \$50.00
<b>CIS 147</b>	<b>WINDOWS 2000</b> LEC 240 TBA OPEN ENTRY INTERNET CLASS requiring off-campus Internet connection. For information contact instructor at: sbajt@harpercollege.edu or go to: harpercollege.edu/bus-ss/cis/147	<b>CREDITS: 2</b> 6/7/04-7/29/04	<b>TOUCHTONE#: 1553</b> FEES: \$25.00	<b>CIS 173</b>	<b>CISCO NETWORKING BASICS</b> LEC 240 TBA OPEN ENTRY INTERNET CLASS requiring off-campus Internet connection. For information go to: harpercollege.edu/bus-ss/cis/173/web	<b>CREDITS: 3</b> 6/7/04-7/29/04	<b>TOUCHTONE#: 1637</b> FEES: \$50.00
<b>CIS 147</b>	<b>WINDOWS XP PROFESSIONAL</b> LEC 241 TBA OPEN ENTRY INTERNET CLASS requiring off-campus Internet connection. For information contact instructor at: sbajt@harpercollege.edu or go to: harpercollege.edu/bus-ss/cis/147	<b>CREDITS: 2</b> 6/7/04-7/29/04	<b>TOUCHTONE#: 1553</b> FEES: \$25.00	<b>CIS 174</b>	<b>CISCO ROUTERS AND ROUTING BASICS</b> Prerequisite: CIS 173 with a grade of C or better, or consent of instructor. LEC 240 TBA OPEN ENTRY INTERNET CLASS requiring off-campus Internet connection. For information go to: harpercollege.edu/bus-ss/cis/174/web	<b>CREDITS: 3</b> 6/7/04-7/29/04	<b>TOUCHTONE#: 1638</b> FEES: \$50.00
				<b>CIS 175</b>	<b>CISCO SWITCHING BASICS AND INTERMEDIATE ROUTING</b> Prerequisite: CIS 174 with a grade of C or better, or consent of instructor. LEC 240 TBA OPEN ENTRY INTERNET CLASS requiring off-campus Internet connection. For information go to: harpercollege.edu/bus-ss/cis/175/web	<b>CREDITS: 3</b> 6/7/04-7/29/04	<b>TOUCHTONE#: 1639</b> FEES: \$50.00
				<b>CIS 177</b>	<b>CISCO WAN TECHNOLOGIES</b> Prerequisite: CIS 175 with a grade of C or better, or consent of instructor. LEC 240 TBA OPEN ENTRY INTERNET CLASS requiring off-campus Internet connection. For information go to: harpercollege.edu/bus-ss/cis/177/web	<b>CREDITS: 3</b> 6/7/04-7/29/04	<b>TOUCHTONE#: 1640</b> FEES: \$50.00
				<b>CIS 218</b>	<b>E-COMMERCE DEVELOPMENT</b> LEC 059 TBA INTERNET CLASS requiring off-campus Internet connection. For information go to: harpercollege.edu/bus-ss/cis/218/web	<b>CREDITS: 3</b> 6/7/04-7/29/04	<b>TOUCHTONE#: 1601</b> FEES: \$25.00

<b>CIS 224</b>	<b>EXCEL 2000 MACROS</b>	<b>CREDITS: 1</b>	<b>TOUCHTONE#: 1575</b>
	Prerequisite: CIS 124 with a grade of C or better or consent of instructor.		
①	LEC 249 TBA	6/7/04-7/29/04	FEES: \$15.00
	OPEN ENTRY CLASS, for information call 847.925.6801 or go to: harpercollege.edu/bus-ss/cis/info/open.htm		
<b>CIS 230</b>	<b>COMPUTER PROGRAMMER INTERNSHIP</b>	<b>CREDITS: 3</b>	<b>TOUCHTONE#:</b>
	Prerequisite: Consent of coordinator.		
	LEC 001 TBA	6/7/04-7/29/04	
<b>CIS 231</b>	<b>VISUAL BASIC PROGRAMMING II</b>	<b>CREDITS: 4</b>	<b>TOUCHTONE#: 1577</b>
	Prerequisite: CIS 130 with a grade of C or better, or consent of instructor. Recommended Prerequisite: CIS 143 with a grade of C or better.		
	LEC 001 TR	6:00 pm-10:20 pm	6/7/04-7/29/04 FEES: \$25.00
	VB.NET Advanced		
<b>CIS 250</b>	<b>NETWORK SECURITY FUNDAMENTALS</b>	<b>CREDITS: 3</b>	<b>TOUCHTONE#: 1642</b>
	Prerequisite: CIS 155, CIS 172 or CIS 177 with a grade of C or better.		
①②	LEC 240 TBA	6/7/04-7/29/04	FEES: \$25.00
	OPEN ENTRY INTERNET CLASS requiring off-campus Internet connection. For information go to: harpercollege.edu/bus-ss/cis/250/web		
<b>CIS 260</b>	<b>NETWORK INFRASTRUCTURE ADMINISTRATION</b>	<b>CREDITS: 3</b>	<b>TOUCHTONE#: 1572</b>
	Prerequisite: CIS 163 with a grade of C or better, or consent of instructor.		
①②	LEC 240 TBA	6/7/04-7/29/04	FEES: \$25.00
	OPEN ENTRY INTERNET CLASS requiring off-campus Internet connection. For information go to: harpercollege.edu/bus-ss/cis/260/web		
<b>CIS 261</b>	<b>DIRECTORY SERVICES ADMINISTRATION</b>	<b>CREDITS: 3</b>	<b>TOUCHTONE#: 1576</b>
	Prerequisite: CIS 163 with a grade of C or better, or consent of instructor.		
①②	LEC 240 TBA	6/7/04-7/29/04	FEES: \$25.00
	OPEN ENTRY INTERNET CLASS requiring off campus Internet connection. For information go to: harpercollege.edu/bus-ss/cis/261/web		
<b>CIS 275</b>	<b>LINUX SYSTEM ADMINISTRATION</b>	<b>CREDITS: 3</b>	
①②	LEC 240 TBA	6/7/04-7/29/04	FEES: \$25.00
	OPEN ENTRY INTERNET CLASS requiring off-campus Internet connection. For information go to: harpercollege.edu/bus-ss/cis/275/web		
<b>CIS 280</b>	<b>VISUAL BASIC PROGRAMMING III</b>	<b>CREDITS: 4</b>	<b>TOUCHTONE#: 1581</b>
	Prerequisite: CIS 231 and either CIS 143 or CIS 142 with grades of C or better, or consent of instructor.		
①②	LEC 240 TBA	6/7/04-7/29/04	FEES: \$25.00
	OPEN ENTRY INTERNET CLASS requiring off-campus Internet connection. For information go to: harpercollege.edu/bus-ss/cis/280/kiener/web		

### Computer Science

For additional information, call Minhua Liu at 847.925.6213.

<b>CSC 121</b>	<b>COMPUTER SCIENCE I</b>	<b>CREDITS: 4</b>	<b>TOUCHTONE#: 1659</b>
	Prerequisite: MTH 103 and MTH 104 with grades of C or better or consent of instructor.		
	LEC 001 MW	10:30 am-1:00 pm	6/7/04-7/29/04 FEES: \$25.00
		10:15 am-1:35 pm	6/7/04-7/29/04
	LEC 002 MW	6:00 pm-8:30 pm	6/7/04-7/29/04 FEES: \$25.00
		8:40 pm-10:20 pm	6/7/04-7/29/04
<b>CSC 122</b>	<b>COMPUTER SCIENCE II</b>	<b>CREDITS: 4</b>	<b>TOUCHTONE#: 1660</b>
	Prerequisite: CSC 121 and MTH 200 with grades of C or better or consent of instructor.		
	LEC 001 TR	6:00 pm-8:30 pm	6/7/04-7/29/04 FEES: \$25.00
		8:40 pm-10:20 pm	6/7/04-7/29/04
<b>CSC 208</b>	<b>PROBLEM SOLVING FOR SCIENCE AND ENGINEERING/FORTRAN</b>	<b>CREDITS: 4</b>	<b>TOUCHTONE#: 1655</b>
	Prerequisite: MTH 200 with a grade of C or better or consent of instructor.		
	LEC 001 MW	6:00 pm-8:30 pm	6/7/04-7/29/04 FEES: \$25.00
		8:40 pm-10:20 pm	6/7/04-7/29/04

### Criminal Justice

For additional information, call Peter Puleo at 847.925.6463.

<b>CRJ 101</b>	<b>INTRODUCTION TO CRIMINAL JUSTICE</b>	<b>CREDITS: 3</b>	<b>TOUCHTONE#: 1607</b>
	LEC 001 MW	10:30 am-1:05 pm	6/7/04-7/29/04
	LEC 002 TR	6:45 pm-9:15 pm	6/7/04-7/29/04
<b>CRJ 205</b>	<b>JUVENILE JUSTICE</b>	<b>CREDITS: 3</b>	<b>TOUCHTONE#: 1614</b>
	LEC 001 TR	10:30 am-1:05 pm	6/7/04-7/29/04

### Dental Hygiene

Dental Hygiene is a limited enrollment program. Contact the Admissions Office, 847.925.6206, for more information.

## LEGEND

#### FlexEd\*

- ① Late Start Class
- ② Internet Course
- ③ Open Entry Class
- ④ Telecourse
- ⑤ TeleWeb Course

#### DAYS OF THE WEEK

- M Monday
- T Tuesday
- W Wednesday
- R Thursday

### Dietetic Technician

For additional information, call Jane Allendorph at 847.925.6537.

<b>DIT 100</b>	<b>INTRODUCTION TO DIETETICS</b>	<b>CREDITS: 2</b>	<b>TOUCHTONE#: 1686</b>
①	LEC 059 TBA	6/7/04-7/29/04	FEES: \$20.00
	INTERNET CLASS requiring off-campus Internet connection. ONLINE ORIENTATION ONLY. For orientation information and beginning course materials, go to harpercollege.edu/doi/diinfo/orien_out.shtml		

### Early Childhood Education

For additional information, call Wendy Mertes at 847.925.6423.

<b>ECE 101</b>	<b>INTRODUCTION TO EARLY CHILDHOOD EDUCATION</b>	<b>CREDITS: 3</b>	<b>TOUCHTONE#: 1446</b>
	LEC 001 MW	3:00 pm-5:40 pm	6/7/04-7/29/04
<b>ECE 102</b>	<b>CHILD DEVELOPMENT I</b>	<b>CREDITS: 3</b>	<b>TOUCHTONE#: 1447</b>
	LEC 001 MW	6:35 pm-9:15 pm	6/7/04-7/29/04
	LEC 002 TR	3:00 pm-5:40 pm	6/7/04-7/29/04
<b>ECE 210</b>	<b>CREATIVE ACTIVITIES FOR YOUNG CHILDREN</b>	<b>CREDITS: 3</b>	<b>TOUCHTONE#: 1466</b>
	LEC 001 TR	6:15 pm-9:45 pm	6/7/04-7/29/04 FEES: \$25.00
<b>ECE 219</b>	<b>PSYCHOLOGY OF EXCEPTIONAL CHILDREN</b>	<b>CREDITS: 3</b>	<b>TOUCHTONE#: 1467</b>
	LEC 001 TR	6:20 pm-9:00 pm	6/7/04-7/29/04
<b>ECE 226</b>	<b>OBSERVATION AND GUIDANCE OF THE YOUNG CHILD</b>	<b>CREDITS: 3</b>	<b>TOUCHTONE#: 1470</b>
	Prerequisite: ECE 101, ECE 102, and ECE 115 with grades of C or better.		
	LEC 001 TR	9:00 am-11:40 am	6/7/04-7/29/04

### Economics

For additional information, call Mark Healy at 847.925.6352.

<b>ECO 115</b>	<b>CONSUMER ECONOMICS</b>	<b>CREDITS: 3</b>	<b>TOUCHTONE#: 1711</b>
①	LEC 050 T	5:30 pm-6:15 pm	6/7/04-7/29/04 FEES: \$20.00
	TELE COURSE Orientation Session 6/8		
<b>ECO 200</b>	<b>INTRODUCTION TO ECONOMICS</b>	<b>CREDITS: 3</b>	<b>TOUCHTONE#: 1712</b>
①	LEC 050 M	5:00 pm-6:00 pm	6/7/04-7/29/04 FEES: \$20.00
	TELE COURSE Orientation Session 6/7		
<b>ECO 211</b>	<b>MICROECONOMICS</b>	<b>CREDITS: 3</b>	<b>TOUCHTONE#: 1717</b>
	LEC 001 MW	10:30 am-1:05 pm	6/7/04-7/29/04
	LEC 002 TR	1:10 pm-3:45 pm	6/7/04-7/29/04
	LEC 003 MW	6:30 pm-9:05 pm	6/7/04-7/29/04
	LEC 004 MW	6:40 pm-9:15 pm	6/7/04-7/29/04
	LEC 005 TR	6:30 pm-9:05 pm	6/7/04-7/29/04
	LEC 006 TR	6:40 pm-9:15 pm	6/7/04-7/29/04
①	LEC 050 T	5:00 pm-6:00 pm	6/7/04-7/29/04 FEES: \$20.00
	TELE COURSE Orientation Session 6/8		
<b>ECO 212</b>	<b>MACROECONOMICS</b>	<b>CREDITS: 3</b>	<b>TOUCHTONE#: 1718</b>
	LEC 001 MW	1:10 pm-3:45 pm	6/7/04-7/29/04
	LEC 002 TR	10:30 am-1:05 pm	6/7/04-7/29/04
	LEC 003 MW	6:30 pm-9:05 pm	6/7/04-7/29/04
	LEC 004 MW	6:40 pm-9:15 pm	6/7/04-7/29/04
	LEC 005 TR	6:40 pm-9:15 pm	6/7/04-7/29/04
①	LEC 059 W	5:00 pm-6:15 pm	6/7/04-7/29/04 FEES: \$20.00
	ORIENTATION Session 6/9 INTERNET CLASS requiring off-campus Internet connection. For information contact instructor at: mhealy@harpercollege.edu		

### Education

For additional information, call Jeannine Lombardi at 847.925.6572.

<b>EDU 201</b>	<b>INTRODUCTION TO EDUCATION</b>	<b>CREDITS: 3</b>	<b>TOUCHTONE#: 1735</b>
	LEC 001 MW	1:10 pm-3:45 pm	6/7/04-7/29/04
	LEC 002 MW	6:30 pm-9:05 pm	6/7/04-7/29/04
<b>EDU 211</b>	<b>EDUCATIONAL PSYCHOLOGY</b>	<b>CREDITS: 3</b>	<b>TOUCHTONE#: 1737</b>
	Prerequisite: PSY 101 or consent of instructor.		
	LEC 001 MW	10:30 am-1:05 pm	6/7/04-7/29/04
	LEC 002 TR	6:30 pm-9:05 pm	6/7/04-7/29/04
<b>EDU 290</b>	<b>CURRENT TRENDS IN SCHOOLING</b>	<b>CREDITS: 3</b>	<b>TOUCHTONE#: 1739</b>
	LEC 001 MW	10:30 am-1:05 pm	6/7/04-7/29/04

### Electronics Engineering Technology

For additional information, call George Hoeltje at 847.925.6528.

<b>ELT 110</b>	<b>INTRODUCTORY ELECTRONICS</b>	<b>CREDITS: 4</b>	<b>TOUCHTONE#: 1784</b>
	LEC 001 TR	6:00 pm-11:00 pm	6/7/04-7/29/04 FEES: \$35.00
<b>ELT 111</b>	<b>SEMICONDUCTOR DEVICES AND CIRCUITS</b>	<b>CREDITS: 2</b>	<b>TOUCHTONE#: 1785</b>
	Prerequisite: ELT 110 with a grade of C or better or consent of instructor.		
	LEC 001 MW	6:00 pm-8:30 pm	6/7/04-7/29/04 FEES: \$35.00

### Engineering

For additional information, call Mike Reed at 847.925.6545.

<b>EGR 212</b>	<b>MECHANICS OF DEFORMABLE BODIES</b>	<b>CREDITS: 3</b>	<b>TOUCHTONE#: 1751</b>
	Prerequisite: EGR 205 with a grade of C or better.		
	LEC 001 TR	6:30 pm-9:00 pm	6/7/04-7/29/04

## English

For additional information on ENG 098,  
call the Learning Achievement Program at 847.925.6715.

**ENG 098 COMPOSITION** CREDITS: 3 TOUCHSTONE#: 1823  
Prerequisite: English placement exam. Recommended corequisite: RDG 090.  
① LEC 001 TR 9:00 am-12:05 pm 6/14/04-7/29/04

For additional information on the following classes, call Kurt Neumann,  
847.925.6749, or Seema Kurup, 847.925.6783.

**ENG 100 COMPOSITION** CREDITS: 3 TOUCHSTONE#: 1824  
Prerequisite: Satisfactory score in English placement test or grade of C or better in ENG 098.  
LEC 001 MW 10:30 am-1:05 pm 6/7/04-7/29/04  
LEC 003 TR 6:30 pm-9:05 pm 6/7/04-7/29/04

**ENG 101 COMPOSITION** CREDITS: 3 TOUCHSTONE#: 1825  
Prerequisite: Satisfactory score on the writing placement test, an ACT English score of 19 or more and an ACT reading score of 20 or more, or ENG 100 with a grade of C or better. ESL students who have achieved a grade of B or better in ESL 073 and a grade of B or better in ESL 074 or ESL 099 will be admitted.

LEC 001 MW 7:50 am-10:25 am 6/7/04-7/29/04  
LEC 002 MW 10:30 am-1:05 pm 6/7/04-7/29/04  
LEC 003 MW 10:30 am-1:05 pm 6/7/04-7/29/04  
LEC 004 MW 1:10 pm-3:45 pm 6/7/04-7/29/04  
LEC 005 MW 3:50 pm-6:25 pm 6/7/04-7/29/04  
LEC 006 TR 7:50 am-10:25 am 6/7/04-7/29/04  
LEC 007 TR 10:30 am-1:05 pm 6/7/04-7/29/04  
LEC 008 TR 1:10 pm-3:45 pm 6/7/04-7/29/04  
LEC 009 TR 3:50 pm-6:25 pm 6/7/04-7/29/04  
LEC 010 MW 6:30 pm-9:05 pm 6/7/04-7/29/04  
LEC 011 MW 7:50 am-10:25 am 6/7/04-7/29/04  
LEC 012 TR 6:30 pm-9:05 pm 6/7/04-7/29/04  
LEC 014 MW 6:30 pm-9:05 pm 6/7/04-7/29/04  
① LEC 059 T 6:45 pm-9:25 pm 6/7/04-7/29/04 FEES: \$20.00

MANDATORY CLASS meets on campus Tuesday, 6/8 only INTERNET CLASS requiring off-campus Internet connection. For further information contact instructor at: cpadgett@harpercollege.edu or 847.925.6440

**ENG 102 COMPOSITION** CREDITS: 3 TOUCHSTONE#: 1826  
Prerequisite: ENG 101 with a grade of C or better or consent of instructor or department chair.

LEC 001 MW 7:50 am-10:25 am 6/7/04-7/29/04  
LEC 003 MW 10:30 am-1:05 pm 6/7/04-7/29/04  
LEC 004 MW 1:10 pm-3:45 pm 6/7/04-7/29/04  
LEC 005 TR 6:30 pm-9:05 pm 6/7/04-7/29/04  
LEC 006 TR 7:50 am-10:25 am 6/7/04-7/29/04  
LEC 007 TR 10:30 am-1:05 pm 6/7/04-7/29/04  
LEC 008 TR 7:50 am-10:25 am 6/7/04-7/29/04  
LEC 009 TR 1:10 pm-3:45 pm 6/7/04-7/29/04  
LEC 010 TR 3:50 pm-6:25 pm 6/7/04-7/29/04  
LEC 011 MW 6:30 pm-9:05 pm 6/7/04-7/29/04  
LEC 012 MW 6:30 pm-9:05 pm 6/7/04-7/29/04  
LEC 013 TR 6:30 pm-9:05 pm 6/7/04-7/29/04  
LEC 015 MW 3:50 pm-6:25 pm 6/7/04-7/29/04  
① LEC 059 M 6:45 pm-9:15 pm 6/7/04-7/29/04 FEES: \$20.00

MANDATORY class meets on campus Monday, 6/7 only INTERNET CLASS requiring off-campus Internet connection. For further information contact instructor at: eturner@harpercollege.edu or 847.925.6787.

**ENG 103 TECHNICAL AND REPORT WRITING** CREDITS: 3 TOUCHSTONE#: 1827  
Prerequisite: ENG 101 with a grade of C or better or consent of instructor or department chair.

LEC 001 MW 6:30 pm-9:05 pm 6/7/04-7/29/04

**ENG 130 BUSINESS WRITING** CREDITS: 3 TOUCHSTONE#: 1828  
Prerequisite: Satisfactory score on English placement test or ENG 100 with a grade of C or better.

LEC 001 TR 6:30 pm-9:05 pm 6/7/04-7/29/04

**ENG 201 ADVANCED COMPOSITION** CREDITS: 3 TOUCHSTONE#: 1829  
Prerequisite: ENG 102 with a grade of C or better or consent of instructor.

LEC 001 TR 10:30 am-1:05 pm 6/7/04-7/29/04

**ENG 220 CREATIVE WRITING** CREDITS: 3 TOUCHSTONE#: 1830  
Prerequisite: ENG 102 with a grade of C or better or consent of instructor.

LEC 001 TR 6:30 pm-9:05 pm 6/7/04-7/29/04

## Fine Arts

For additional information, call Ken Dahlberg at 847.925.6308.

**FNA 112 HISTORY OF ART II** CREDITS: 3 TOUCHSTONE#: 1958  
Recommended Prerequisite: FNA 111 with a grade of C or better.  
LEC 001 MW 1:10 pm-3:45 pm 6/7/04-7/29/04

## Fire Science

For additional information, call Sam Giordano at 847.925.6379.

**FIS 102 FIRE SERVICE MANAGEMENT I** CREDITS: 3 TOUCHSTONE#: 1909  
Prerequisite: FIS 100 and FIS 121 with a grade of C or better, or consent of coordinator.  
LEC 001 MW 5:00 pm-7:30 pm 6/7/04-7/29/04 FEES: \$20.00

**FIS 121 FIRE BEHAVIOR AND COMBUSTION** CREDITS: 3 TOUCHSTONE#: 1913  
Prerequisite: FIS 100 with a grade of C or better.  
LEC 001 MW 7:45 pm-10:15 pm 6/7/04-7/29/04

## French

For additional information, call Vera Jareckyj at 847.925.6776.

**FRN 101 ELEMENTARY FRENCH I** CREDITS: 4 TOUCHSTONE#: 1986  
LEC 001 TR 6:00 pm-9:20 pm 6/7/04-7/29/04

**FRN 201 INTERMEDIATE FRENCH** CREDITS: 4 TOUCHSTONE#: 1988  
Prerequisite: FRN 102 with a grade of C or better, two years of high school French or consent of instructor.  
LEC 001 MW 6:00 pm-9:20 pm 6/7/04-7/29/04

## Geography

For additional information, call Mark Healy at 847.925.6352.

**GEG 101 WORLD/REGIONAL GEOGRAPHY** CREDITS: 3 TOUCHSTONE#: 2062  
LEC 001 MW 7:50 am-10:25 am 6/7/04-7/29/04  
LEC 002 MW 6:30 pm-9:05 pm 6/7/04-7/29/04  
① LEC 059 T 5:00 pm-6:15 pm 6/7/04-7/29/04 FEES: \$20.00

ORIENTATION Session 6/8 INTERNET CLASS requiring off-campus Internet connection. For information contact instructor at: mhealy@harpercollege.edu

**GEG 103 THE DEVELOPING WORLD** CREDITS: 3 TOUCHSTONE#: 2065  
LEC 001 MW 10:30 am-1:05 pm 6/7/04-7/29/04

**GEG 108 CULTURAL GEOGRAPHY** CREDITS: 3 TOUCHSTONE#: 2063  
① LEC 059 M 5:00 pm-6:15 pm 6/7/04-7/29/04 FEES: \$20.00  
ORIENTATION Session 6/7 INTERNET CLASS requiring off-campus Internet connection. For information contact instructor at: mhealy@harpercollege.edu

**GEG 111 PHYSICAL GEOGRAPHY** CREDITS: 3 TOUCHSTONE#: 2068  
LEC 001 MW 7:20 pm-10:00 pm 6/7/04-7/29/04  
LEC 002 TR 7:50 am-10:25 am 6/7/04-7/29/04

**GEG 112 PHYSICAL GEOGRAPHY LABORATORY** CREDITS: 1 TOUCHSTONE#: 2069  
Prerequisite: Prior or concurrent enrollment in GEG 111.  
LEC 001 MW 5:20 pm-7:00 pm 6/7/04-7/29/04 FEES: \$10.00  
LEC 002 TR 10:40 am-12:20 pm 6/7/04-7/29/04 FEES: \$10.00

## Geology

For additional information, call Larry Knight at 847.925.6589.

**GEO 101 PHYSICAL GEOLOGY** CREDITS: 4 TOUCHSTONE#: 2090  
LEC 001 TWR 7:50 am-11:10 am 6/7/04-7/29/04 FEES: \$30.00

## German

For additional information, call Renate von Keudell at 847.925.6786.

**GER 101 ELEMENTARY GERMAN I** CREDITS: 4 TOUCHSTONE#: 2119  
LEC 001 MW 6:00 pm-9:20 pm 6/7/04-7/29/04

**GER 102 ELEMENTARY GERMAN II** CREDITS: 4 TOUCHSTONE#: 2120  
Prerequisite: GER 101 with a grade of C or better, one year of high school German or consent of instructor.  
LEC 001 MW 8:25 am-11:40 am 6/7/04-7/29/04

**GER 201 INTERMEDIATE GERMAN I** CREDITS: 4 TOUCHSTONE#: 2121  
Prerequisite: GER 102 with a grade of C or better, two years of high school German or consent of instructor.  
LEC 001 TR 6:00 pm-9:20 pm 6/7/04-7/29/04

## HVAC—Heating/Ventilation and Air Conditioning

Open entry classes. Students may choose day(s) and time(s). For additional information, call John Shola at 847.925.6823.

**RAC 101 REFRIGERATION FUNDAMENTALS** CREDITS: 4 TOUCHSTONE#: 3312  
① LEC 248 TBA 6/7/04-7/29/04 FEES: \$30.00  
OPEN ENTRY CLASS, for information call 847.925.6823 or 847.925.6705

**RAC 102 REFRIGERATION SYSTEM** CREDITS: 4 TOUCHSTONE#: 3313  
Prerequisite: RAC 101 with a grade of C or better.  
① LEC 248 TBA 6/7/04-7/29/04 FEES: \$30.00  
OPEN ENTRY CLASS, for information call 847.925.6823 or 847.925.6705

**RAC 103 HEATING PRINCIPLES** CREDITS: 4 TOUCHSTONE#: 3314  
① LEC 248 TBA 6/7/04-7/29/04 FEES: \$30.00  
OPEN ENTRY CLASS, for information call 847.925.6823 or 847.925.6705

**RAC 104 RESIDENTIAL COMFORT SYSTEMS** CREDITS: 4 TOUCHSTONE#: 3315  
Prerequisite: RAC 101 and RAC 103 with grades of C or better.  
① LEC 248 TBA 6/7/04-7/29/04 FEES: \$30.00  
OPEN ENTRY CLASS, for information call 847.925.6823 or 847.925.6705

**RAC 105 HEATING AND COOLING CONTROLS** CREDITS: 4 TOUCHSTONE#: 3316  
① LEC 248 TBA 6/7/04-7/29/04 FEES: \$30.00  
OPEN ENTRY CLASS, for information call 847.925.6823 or 847.925.6705

**RAC 106 ADVANCED CONTROLS** CREDITS: 4 TOUCHSTONE#: 3317  
① LEC 248 TBA 6/7/04-7/29/04 FEES: \$30.00  
OPEN ENTRY CLASS, for information call 847.925.6823 or 847.925.6705

**RAC 108 DOMESTIC REFRIGERATION APPLIANCES** CREDITS: 4 TOUCHSTONE#: 3325  
Prerequisite: RAC 101 and RAC 105 with grades of C or better.  
① LEC 248 TBA 6/7/04-7/29/04 FEES: \$30.00  
OPEN ENTRY CLASS, for information call 847.925.6823 or 847.925.6705

## History

<b>HST 105 GREAT IDEAS OF WORLD CIVILIZATIONS</b>	<b>CREDITS: 3</b>	<b>TOUCHTONE#: 2195</b>
LEC 001 TR 1:10 pm-3:45 pm 6/7/04-7/29/04		
Honors Students Only. Contact Andrew Wilson, L244, 847.925.6791. Also listed as HUM105-001 (register for one but not both).		
<b>HST 111 AMERICAN EXPERIENCE TO 1877</b>	<b>CREDITS: 3</b>	<b>TOUCHTONE#: 2182</b>
LEC 001 TR 3:00 pm-5:35 pm 6/7/04-7/29/04		
LEC 002 TR 6:30 pm-9:05 pm 6/7/04-7/29/04		
① LEC 050 M 5:00 pm-6:00 pm 6/7/04-7/29/04	<b>FEES: \$20.00</b>	
TELECOURSE Mandatory Orientation Session 6/7		
<b>HST 112 AMERICAN EXPERIENCE SINCE 1877</b>	<b>CREDITS: 3</b>	<b>TOUCHTONE#: 2183</b>
LEC 001 MW 7:50 am-10:25 am 6/7/04-7/29/04		
LEC 002 TR 6:30 pm-9:05 pm 6/7/04-7/29/04		
① LEC 050 W 5:00 pm-6:15 pm 6/7/04-7/29/04	<b>FEES: \$20.00</b>	
TELECOURSE Mandatory Orientation Session 6/9		
<b>HST 121 HISTORY OF LATIN AMERICA</b>	<b>CREDITS: 3</b>	<b>TOUCHTONE#: 2184</b>
LEC 001 MW 6:30 pm-9:05 pm 6/7/04-7/29/04		
<b>HST 141 HISTORY OF WESTERN CIVILIZATION TO 1650</b>	<b>CREDITS: 4</b>	<b>TOUCHTONE#: 2185</b>
LEC 001 MW 7:50 am-11:15 am 6/7/04-7/29/04		
<b>HST 142 HISTORY OF WESTERN CIVILIZATION SINCE 1650</b>	<b>CREDITS: 4</b>	<b>TOUCHTONE#: 2186</b>
LEC 001 TR 7:50 am-11:15 am 6/7/04-7/29/04		
<b>HST 212 RECENT AMERICAN HISTORY, 1945-1980</b>	<b>CREDITS: 3</b>	<b>TOUCHTONE#: 2194</b>
LEC 001 MW 10:30 am-1:05 pm 6/7/04-7/29/04		
<b>HST 243 FAR EAST IN THE MODERN WORLD</b>	<b>CREDITS: 3</b>	<b>TOUCHTONE#: 2193</b>
① LEC 050 M 5:00 pm-6:00 pm 6/7/04-7/29/04	<b>FEES: \$20.00</b>	
TELECOURSE Mandatory Orientation Session 6/7		

## Hospitality Management

For additional information, call Patrick Beach at 847.925.6874.

<b>FSM 107 BASIC QUANTITY BREAD AND PASTRY ARTS</b>	<b>CREDITS: 4</b>	<b>TOUCHTONE#: 2017</b>
Prerequisite: Consent of coordinator or instructor.		
LEC 001 WR 8:00 am-9:40 am 6/7/04-7/29/04		
(REQUIRES THE FOLLOWING LAB)		
LAB 150 WR 9:50 am-2:00 pm 6/7/04-7/29/04	<b>FEES: \$60.00</b>	
<b>FSM 114 FOOD STANDARDS AND SANITATION</b>	<b>CREDITS: 2</b>	<b>TOUCHTONE#: 2024</b>
LEC 001 T 5:30 pm-10:00 pm 6/7/04-7/15/04		

## Human Services

For additional information, call Geri Kale-Smith at 847.925.6444. For additional classes in related course work, please refer to Medical Office Administration.

<b>HSC 100 COMPUTER USAGE IN HEALTH SERVICES</b>	<b>CREDITS: 1</b>	<b>TOUCHTONE#: 2150</b>
LEC 001 MW 5:00 pm-6:40 pm 6/7/04-7/29/04	<b>FEES: \$24.00</b>	
<b>HSC 112 MEDICAL TERMINOLOGY</b>	<b>CREDITS: 3</b>	<b>TOUCHTONE#: 2153</b>
LEC 001 TR 4:00 pm-6:40 pm 6/7/04-7/29/04		
(REQUIRES ONE OF THE FOLLOWING LABS)		
LAB 151 T 7:00 pm-8:40 pm 6/7/04-7/29/04	<b>FEES: \$15.00</b>	
LAB 152 R 7:00 pm-8:40 pm 6/7/04-7/29/04	<b>FEES: \$15.00</b>	

## Humanities

For additional information, call Richard Johnson at 847.925.6429.

<b>HUM 101 INTRODUCTION TO WESTERN CULTURE I</b>	<b>CREDITS: 3</b>	<b>TOUCHTONE#: 2219</b>
LEC 001 MW 10:30 am-1:05 pm 6/7/04-7/29/04		
LEC 002 TR 1:10 pm-3:40 pm 6/7/04-7/29/04		
<b>HUM 102 INTRODUCTION TO WESTERN CULTURE II</b>	<b>CREDITS: 3</b>	<b>TOUCHTONE#: 2220</b>
LEC 002 TR 10:30 am-1:05 pm 6/7/04-7/29/04		
LEC 003 MW 1:10 pm-3:40 pm 6/7/04-7/29/04		
<b>HUM 103 ASIAN AND AFRICAN HUMANITIES</b>	<b>CREDITS: 3</b>	<b>TOUCHTONE#: 2225</b>
LEC 001 TR 10:30 am-1:05 pm 6/7/04-7/29/04		
<b>HUM 105 GREAT IDEAS OF WORLD CIVILIZATIONS</b>	<b>CREDITS: 3</b>	<b>TOUCHTONE#: 2224</b>
LEC 001 TR 1:10 pm-3:45 pm 6/7/04-7/29/04		
Honors students only. Contact Andrew Wilson, L244, 847.925.6791. Also listed as HST105-001 (register for one but not both)		

<b>HUM 115 INTERNATIONAL AND REGIONAL STUDIES IN HUMANITIES</b>	<b>CREDITS: 3</b>	<b>TOUCHTONE#: 2222</b>
LEC 060 TBA 5/28/04-6/21/04		
TO BE ANNOUNCED		
Three-week international study in Humanities and Literature *THE AMERICAN EXPERIENCE IN PARIS* Special fees apply. Contact Richard Kaplan, L330, 847.925.6480 or Kurt Hemmer, L245, 847.925.6779 for details		
LEC 061 TBA 6/9/04-6/22/04		
TO BE ANNOUNCED		
Two-week international study in Humanities *THE ART AND ARCHAEOLOGY OF GREECE* Special fees apply. Contact Corinne Moran, C217, 847.925.6329 for details		
LEC 062 TBA 5/20/04-6/6/04		
TO BE ANNOUNCED		
Three-week international study in Literature and Humanities *EXPERIENCING CHINA IN LITERATURE AND HUMANITIES* Special fees apply. Contact Xilao Li, L247, 847.925.6321 for details		
<b>HUM 120 CLASSICAL MYTHOLOGY</b>	<b>CREDITS: 3</b>	<b>TOUCHTONE#: 2223</b>
LEC 001 MW 1:10 pm-3:40 pm 6/7/04-7/29/04		
LEC 003 TR 1:10 pm-3:40 pm 6/7/04-7/29/04		

## Interior Design

For additional information, call Kathy Kleiva at 847.925.6493.

<b>IND 100 INTERIOR DESIGN THEORY</b>	<b>CREDITS: 1</b>	<b>TOUCHTONE#: 2268</b>
Recommended Corequisite: IND 101.		
LEC 001 T 1:30 pm-5:00 pm 6/7/04-7/29/04	<b>FEES: \$8.00</b>	
<b>IND 106 MATERIALS AND SOURCES</b>	<b>CREDITS: 3</b>	<b>TOUCHTONE#: 2252</b>
LEC 001 TR 9:00 am-11:40 am 6/7/04-7/29/04	<b>FEES: \$11.00</b>	
<b>IND 107 INTERIOR PERSPECTIVE AND RENDERING</b>	<b>CREDITS: 3</b>	<b>TOUCHTONE#: 2253</b>
Prerequisite: ART 121, IND 100 and IND 101 with grades of C or better, or consent of coordinator.		
① LEC 001 TR 9:00 am-1:10 pm 6/14/04-7/29/04	<b>FEES: \$11.00</b>	
<b>IND 108 COLOR FOR INTERIOR DESIGN/CAD</b>	<b>CREDITS: 3</b>	<b>TOUCHTONE#: 2254</b>
Prerequisite: ART 121, IND 100 and IND 101 with grades of C or better, or consent of coordinator.		
LEC 001 TR 1:10 pm-4:40 pm 6/7/04-7/29/04	<b>FEES: \$35.00</b>	
<b>IND 217 ADVANCED SKETCHING AND PERSPECTIVE DRAWING</b>	<b>CREDITS: 2</b>	<b>TOUCHTONE#: 2267</b>
Prerequisite: ART 121 and IND 107 with grades of C or better, or consent of coordinator.		
① LEC 001 MW 9:00 am-12:00 pm 6/14/04-7/7/04	<b>FEES: \$45.00</b>	
MW 12:30 pm-3:15 pm 6/14/04-7/7/04		

## International Business

For additional information, call John Toomey at 847.925.6358.

<b>MGT 115 INTRODUCTION TO INTERNATIONAL BUSINESS</b>	<b>CREDITS: 3</b>	<b>TOUCHTONE#: 2610</b>
① LEC 059 TBA 6/7/04-7/29/04	<b>FEES: \$20.00</b>	
INTERNET CLASS requiring off-campus internet connection. For information contact John Toomey, 847.925.6358 or jtoomey@harpercollege.edu.		
<b>MKT 260 INTERNATIONAL MARKETING</b>	<b>CREDITS: 3</b>	<b>TOUCHTONE#: 2670</b>
① LEC 059 TBA 6/7/04-7/29/04	<b>FEES: \$20.00</b>	
INTERNET CLASS requiring off-campus internet connection. For information contact John Toomey, 847.925.6358 or jtoomey@harpercollege.edu.		

## Japanese

For additional information, call Renate von Keudell at 847.925.6786.

<b>JPN 101 ELEMENTARY JAPANESE I</b>	<b>CREDITS: 4</b>	<b>TOUCHTONE#: 2354</b>
LEC 001 TR 6:00 pm-9:40 pm 6/7/04-7/29/04		
<b>JPN 102 ELEMENTARY JAPANESE II</b>	<b>CREDITS: 4</b>	<b>TOUCHTONE#: 2355</b>
Prerequisite: JPN 101 with a grade of C or better or consent of instructor.		
LEC 001 MW 6:00 pm-9:40 pm 6/7/04-7/29/04		

## Journalism and Mass Communications

For additional information, call Becky Nicol at 847.925.6562.

<b>JNM 130 FUNDAMENTALS OF JOURNALISM</b>	<b>CREDITS: 3</b>	<b>TOUCHTONE#: 2319</b>
LEC 001 MW 10:00 am-12:40 pm 6/7/04-7/29/04	<b>FEES: \$15.00</b>	
<b>JNM 137 MEDIA WRITING</b>	<b>CREDITS: 3</b>	<b>TOUCHTONE#: 2322</b>
LEC 001 TR 6:35 pm-9:15 pm 6/7/04-7/29/04	<b>FEES: \$15.00</b>	
<b>JNM 234 MASS COMMUNICATIONS</b>	<b>CREDITS: 3</b>	<b>TOUCHTONE#: 2324</b>
LEC 001 MW 6:30 pm-9:10 pm 6/7/04-7/29/04		

## LEGEND

## FlexEd®

- ① Late Start Class
- ② Internet Course
- ③ Open Entry Class
- ④ Telecourse
- ⑤ TeleWeb Course

## DAYS OF THE WEEK

- M Monday
- T Tuesday
- W Wednesday
- R Thursday

## Literature

For additional information on the following classes, call Kurt Neumann, 847.925.6749, or Seema Kurup, 847.925.6783.

<b>LIT 105</b>	<b>POETRY</b>		<b>CREDITS: 3</b>	<b>TOUCHTONE#: 2383</b>
LEC 001	MW	10:30 am-1:05 pm	6/7/04-7/29/04	
LEC 002	TR	1:10 pm-3:45 pm	6/7/04-7/29/04	
<b>LIT 115</b>	<b>FICTION</b>		<b>CREDITS: 3</b>	<b>TOUCHTONE#: 2386</b>
LEC 001	MW	10:30 am-1:05 pm	6/7/04-7/29/04	
LEC 003	TR	10:30 am-1:05 pm	6/7/04-7/29/04	
LEC 004	MW	6:30 pm-9:05 pm	6/7/04-7/29/04	
LEC 005	TR	3:50 pm-6:25 pm	6/7/04-7/29/04	
①	LEC 060	TBA	5/20/04-6/6/04	
	TO BE ANNOUNCED			
	Three-week international study in Literature and Humanities *EXPERIENCING CHINA IN LITERATURE AND HUMANITIES* Special fees apply. Contact Xilao Li, L247, 847.925.6321 for details			
<b>LIT 208</b>	<b>NON-WESTERN LITERATURE</b>		<b>CREDITS: 3</b>	<b>TOUCHTONE#: 2389</b>
LEC 001	MW	10:30 am-1:05 pm	6/7/04-7/29/04	
<b>LIT 210</b>	<b>INTRODUCTION TO SHAKESPEARE</b>		<b>CREDITS: 3</b>	<b>TOUCHTONE#: 2390</b>
LEC 001	MW	1:10 pm-3:45 pm	6/7/04-7/29/04	
<b>LIT 219</b>	<b>CHILDREN'S LITERATURE</b>		<b>CREDITS: 3</b>	<b>TOUCHTONE#: 2393</b>
LEC 001	MW	7:50 am-10:25 am	6/7/04-7/29/04	
<b>LIT 222</b>	<b>AMERICAN LITERATURE: CIVIL WAR TO PRESENT</b>		<b>CREDITS: 3</b>	<b>TOUCHTONE#: 2395</b>
	LEC 060	TBA	5/28/04-6/21/04	
	TO BE ANNOUNCED			
	Three-week international study in Humanities and Literature *THE AMERICAN EXPERIENCE IN PARIS* Special fees apply. Contact Kurt Hemmer, L245, 847.925.6779 or Richard Kaplan, L330, 847.925.6480 for details			
<b>LIT 231</b>	<b>ENGLISH LITERATURE TO 1800</b>		<b>CREDITS: 3</b>	<b>TOUCHTONE#: 2397</b>
LEC 002	MW	1:10 pm-3:45 pm	6/7/04-7/29/04	

## Maintenance Technology

For additional information, call Sally Griffith at 847.925.6793.

<b>MNT 110</b>	<b>BASIC WELDING</b>		<b>CREDITS: 3</b>	<b>TOUCHTONE#: 2450</b>
LEC 001	MW	5:45 pm-9:55 pm	6/7/04-7/29/04	FEES: \$40.00
<b>MNT 115</b>	<b>BASIC CARPENTRY</b>		<b>CREDITS: 2</b>	<b>TOUCHTONE#: 2452</b>
LEC 001	T	5:00 pm-10:00 pm	6/7/04-7/29/04	FEES: \$40.00

## Management

For additional information, call Patricia Setlik at 847.925.6840.

<b>MGT 111</b>	<b>INTRODUCTION TO BUSINESS ORGANIZATION</b>		<b>CREDITS: 3</b>	<b>TOUCHTONE#: 2609</b>
LEC 001	MW	10:30 am-1:05 pm	6/7/04-7/29/04	
LEC 002	MW	6:30 pm-9:05 pm	6/7/04-7/29/04	
LEC 003	TR	10:30 am-1:05 pm	6/7/04-7/29/04	
LEC 004	TR	6:30 pm-9:05 pm	6/7/04-7/29/04	
①	LEC 050	W	5:00 pm-6:15 pm	6/7/04-7/29/04
	TELE COURSE Orientation Session 6/9			
①	LEC 059	T	4:00 pm-5:00 pm	6/7/04-7/29/04
	FEES: \$20.00			
	ORIENTATION Session 6/8 INTERNET CLASS requiring off-campus Internet connection. For information contact instructor at: psetlik@harpercollege.edu			
<b>MGT 115</b>	<b>INTRODUCTION TO INTERNATIONAL BUSINESS</b>		<b>CREDITS: 3</b>	<b>TOUCHTONE#: 2610</b>
①	LEC 059	TBA	6/7/04-7/29/04	FEES: \$20.00
	INTERNET CLASS requiring off-campus Internet connection. For information contact John Toomey, 847.925.6358 or jtoomey@harpercollege.edu.			
<b>MGT 150</b>	<b>BUSINESS MATH</b>		<b>CREDITS: 3</b>	<b>TOUCHTONE#: 2612</b>
①	LEC 050	T	5:00 pm-6:00 pm	6/7/04-7/29/04
	FEES: \$20.00			
	TELE COURSE Orientation Session 6/8			
<b>MGT 160</b>	<b>PRINCIPLES OF SUPERVISION</b>		<b>CREDITS: 3</b>	<b>TOUCHTONE#: 2614</b>
LEC 001	TR	6:30 pm-9:05 pm	6/7/04-7/29/04	
<b>MGT 225</b>	<b>APPLIED GENERAL STATISTICS</b>		<b>CREDITS: 4</b>	<b>TOUCHTONE#: 2621</b>
	Prerequisite: MTH 103 or MTH 134 with a grade of C or better.			
LEC 001	MW	7:00 am-10:25 am	6/7/04-7/29/04	FEES: \$15.00
①	LEC 050	W	5:00 pm-6:00 pm	6/7/04-7/29/04
	FEES: \$20.00			
	TELE COURSE Orientation Session 6/9			
<b>MGT 270</b>	<b>PRINCIPLES OF MANAGEMENT</b>		<b>CREDITS: 3</b>	<b>TOUCHTONE#: 2627</b>
	Prerequisite: MGT 111.			
LEC 001	MW	6:30 pm-9:05 pm	6/7/04-7/29/04	
①	LEC 059	M	5:00 pm-6:00 pm	6/7/04-7/29/04
	FEES: \$20.00			
	ORIENTATION Session 6/7 INTERNET CLASS requiring off-campus Internet connection. For information contact instructor at: psetlik@harpercollege.edu			

## Marketing

For additional information, call Maria Coons at 847.925.6563.

<b>MKT 140</b>	<b>PRINCIPLES OF PROFESSIONAL SELLING</b>		<b>CREDITS: 3</b>	<b>TOUCHTONE#: 2659</b>
①	LEC 050	T	5:00 pm-6:00 pm	6/7/04-7/29/04
	FEES: \$20.00			
	TELE COURSE Orientation Session 6/8			
<b>MKT 245</b>	<b>PRINCIPLES OF MARKETING</b>		<b>CREDITS: 3</b>	<b>TOUCHTONE#: 2664</b>
LEC 001	TR	6:35 pm-9:15 pm	6/7/04-7/29/04	
①	LEC 050	W	5:00 pm-6:15 pm	6/7/04-7/29/04
	FEES: \$20.00			
	TELE COURSE Orientation Session 6/9			
①	LEC 059	M	5:00 pm-6:15 pm	6/7/04-7/29/04
	FEES: \$20.00			
	ORIENTATION Session 6/7 INTERNET CLASS requiring off-campus Internet connection. For information contact instructor at: clissy@harpercollege.edu			

<b>MKT 247</b>	<b>CONSUMER BUYING BEHAVIOR</b>		<b>CREDITS: 3</b>	<b>TOUCHTONE#: 2666</b>
①	LEC 059	R	5:00 pm-6:15 pm	6/7/04-7/29/04
	FEES: \$20.00			
	ORIENTATION Session 6/10 INTERNET CLASS requiring off-campus Internet connection. For information contact instructor at: mcoons@harpercollege.edu			
<b>MKT 260</b>	<b>INTERNATIONAL MARKETING</b>		<b>CREDITS: 3</b>	<b>TOUCHTONE#: 2670</b>
①	LEC 059	TBA	6/7/04-7/29/04	FEES: \$20.00
	INTERNET CLASS requiring off-campus Internet connection. For information contact John Toomey, 847.925.6358 or jtoomey@harpercollege.edu.			
<b>MKT 281</b>	<b>INTERNSHIP IN MARKETING</b>		<b>CREDITS: 3</b>	<b>TOUCHTONE#: 2679</b>
	Prerequisite: Consent of coordinator.			
LEC 001	TR	4:10 pm-5:50 pm	6/7/04-7/29/04	

## Mathematics

Prerequisite waivers can be given only by the department chair. Overrides into full sections can be given only by the instructor. For additional information, contact Karen Froelich, 847.925.6409 or kfroelich@harpercollege.edu.

For additional information about MTH 051, MTH 055 and MTH 070 series, call the Math Lab at 847.925.6395.

An assessment test is required before registering for your first math course. Contact the Testing Center, 847.925.6541, or the Center for New Students, 847.925.6208, for testing information.

## Math Lab Orientation Sessions

Registration in MTH 051, MTH 052, MTH 053, MTH 055 or MTH 070 requires attendance at an orientation session in Building D, Room D107, during the first two days of the semester, Monday, June 7, or Tuesday, June 8. Orientation sessions are scheduled as follows:

## MTH 051, MTH 052, MTH 053, MTH 055

Monday, June 7 - 4 p.m., 5 p.m., 6 p.m., 7 p.m., 7:30 p.m. or Tuesday, June 8 - 8 a.m., 9 a.m., 10 a.m., 11 a.m., 11:30 a.m.

## MTH 070

Monday, June 7 - 4:30 p.m., 5:30 p.m., 6:30 p.m. or Tuesday, June 8 - 8:30 a.m., 9:30 a.m., 10:30 a.m.

## Returning MTH 052, 053, 055 students:

Attend a scheduled orientation time to make an appointment. Plan to stay for 15 minutes.

## New MTH 051, 052, 053, 055 students:

Attend a scheduled orientation. Plan to stay for one hour. Bring a pencil and a calculator.

## New MTH 070 students:

Attend a scheduled orientation. Plan to stay for 30 minutes

MTH 051, 052, 053 courses can be taken as an open entry course and entered any time during the semester.

MTH 055 and MTH 070 must be started at the beginning of the semester.

<b>MTH 051</b>	<b>ARITHMETIC OF WHOLE NUMBERS</b>		<b>CREDITS: 1</b>	<b>TOUCHTONE#: 2735</b>
	Prerequisite: Math placement test.			
LEC 001	TBA		6/7/04-7/29/04	
	INDIVIDUALIZED INSTRUCTION Orientation in Room D107 June 7: 4pm, 5pm, 6pm, 7pm or 7:30pm June 8: 8am, 9am, 10am, 11am or 11:30am For further information call 847.925.6395			
<b>MTH 052</b>	<b>ARITHMETIC OF FRACTIONS AND DECIMALS</b>		<b>CREDITS: 1</b>	<b>TOUCHTONE#: 2738</b>
	Prerequisite: MTH 051 with a grade of C or better, or math placement test.			
LEC 001	TBA		6/7/04-7/29/04	
	INDIVIDUALIZED INSTRUCTION Orientation in Room D107 June 7: 4pm, 5pm, 6pm, 7pm or 7:30pm June 8: 8am, 9am, 10am, 11am or 11:30am For further information call 847.925.6395			
<b>MTH 053</b>	<b>ARITHMETIC/RATIO, PROPORTION PERCENT AND MEASUREMENT</b>		<b>CREDITS: 1</b>	<b>TOUCHTONE#: 2741</b>
	Prerequisite: MTH 052 with a grade of C or better, or math placement test.			
LEC 001	TBA		6/7/04-7/29/04	
	INDIVIDUALIZED INSTRUCTION Orientation in Room D107 June 7: 4pm, 5pm, 6pm, 7pm or 7:30pm June 8: 8am, 9am, 10am, 11am or 11:30am For further information call 847.925.6395			
<b>MTH 055</b>	<b>BASIC COLLEGE MATHEMATICS</b>		<b>CREDITS: 3</b>	<b>TOUCHTONE#: 2768</b>
	Prerequisite: Math placement test.			
LEC 001	TBA		6/7/04-7/29/04	
	INDIVIDUALIZED INSTRUCTION Orientation in Room D107 June 7: 4pm, 5pm, 6pm, 7pm or 7:30pm June 8: 8am, 9am, 10am, 11am or 11:30am For further information call 847.925.6395			
LEC 002	TR	7:50 am-10:25 am	6/7/04-7/29/04	
LEC 003	MW	6:30 pm-9:05 pm	6/7/04-7/29/04	
<b>MTH 060</b>	<b>FOUNDATIONS OF MATHEMATICS I</b>		<b>CREDITS: 4</b>	<b>TOUCHTONE#: 2759</b>
	Prerequisite: MTH 053 or MTH 055 with a grade of C or better or math placement test. TI-83 or TI-83 Plus calculator required.			
LEC 001	MTWR	7:50 am-9:30 am	6/7/04-7/29/04	
LEC 002	MW	10:30 am-12:10 pm	6/7/04-7/29/04	
	TR	10:30 am-12:10 pm	6/7/04-7/29/04	
LEC 003	TR	1:10 pm-4:40 pm	6/7/04-7/29/04	
LEC 004	MW	6:30 pm-10:00 pm	6/7/04-7/29/04	
LEC 005	TR	6:30 pm-10:00 pm	6/7/04-7/29/04	
LEC 006	MW	1:10 pm-4:40 pm	6/7/04-7/29/04	
<b>MTH 070</b>	<b>PLANE GEOMETRY</b>		<b>CREDITS: 3</b>	<b>TOUCHTONE#: 2761</b>
	Prerequisite: MTH 060 or MTH 063 with a grade of C or better, or math placement test.			
LEC 001	TBA		6/7/04-7/29/04	
	INDIVIDUALIZED INSTRUCTION Orientation in Room D107 June 7: 4:30pm, 5:30pm, or 6:30pm June 8: 8:30am, 9:30am, or 10:30am For further information call 847.925.6395			
LEC 002	MW	1:10 pm-3:45 pm	6/7/04-7/29/04	

**MTH 080 FOUNDATIONS OF MATHEMATICS II****CREDITS: 4 TOUCHSTONE#: 2762**

Prerequisite: MTH 060 or MTH 063 with a grade of C or better, or math placement test. TI-83 or TI-83 Plus calculator required.

LEC 001	MTWR	7:50 am-9:30 am	6/7/04-7/29/04
LEC 002	MW	12:15 pm-3:45 pm	6/7/04-7/29/04
LEC 003	MTWR	12:30 pm-2:10 pm	6/7/04-7/29/04
LEC 004	MW	6:30 pm-10:00 pm	6/7/04-7/29/04
LEC 005	TR	6:30 pm-10:00 pm	6/7/04-7/29/04
LEC 006	MW	1:10 pm-4:40 pm	6/7/04-7/29/04

**MTH 101 QUANTITATIVE LITERACY****CREDITS: 4 TOUCHSTONE#: 2765**

Prerequisite: MTH 070 (or equivalent) with a grade of C or better or Geometry placement test and MTH 080 or MTH 087 with a grade of C or better or placement test. An ACT Math score of 23 or more will satisfy all the previous prerequisites mentioned for this course. TI-83 or TI-83 Plus calculator required.

LEC 001	TWR	10:30 am-12:55 pm	6/7/04-7/29/04
LEC 002	MW	1:10 pm-4:40 pm	6/7/04-7/29/04
LEC 003	TR	6:30 pm-10:00 pm	6/7/04-7/29/04
LEC 004	TR	1:10 pm-3:45 pm	6/7/04-7/29/04

**MTH 103 COLLEGE ALGEBRA****CREDITS: 4 TOUCHSTONE#: 2736**

Prerequisite: MTH 070 (or equivalent) with a grade of C or better or Geometry placement test and MTH 080 or MTH 087 with a grade of C or better or placement test. An ACT Math score of 23 or more will satisfy all the previous prerequisites mentioned for this course. TI-83 or TI-83 Plus calculator required.

LEC 001	TWR	7:50 am-10:15 am	6/7/04-7/29/04
LEC 002	TWR	10:30 am-12:55 pm	6/7/04-7/29/04
LEC 003	MW	1:10 pm-4:40 pm	6/7/04-7/29/04
LEC 004	TR	1:10 pm-4:40 pm	6/7/04-7/29/04
LEC 005	MW	6:30 pm-10:00 pm	6/7/04-7/29/04
LEC 006	TR	6:30 pm-10:00 pm	6/7/04-7/29/04
LEC 007	TR	6:30 pm-10:00 pm	6/7/04-7/29/04

**MTH 104 PLANE TRIGONOMETRY****CREDITS: 3 TOUCHSTONE#: 2737**

Prerequisite: MTH 070 (or equivalent) with a grade of C or better or Geometry placement test and MTH 080 or MTH 087 with a grade of C or better or placement test. An ACT Math score of 23 or more will satisfy all the previous prerequisites mentioned for this course. TI-83 or TI-83 Plus calculator required.

LEC 001	MW	7:50 am-10:25 am	6/7/04-7/29/04
LEC 002	TR	10:30 am-1:05 pm	6/7/04-7/29/04
LEC 003	MW	6:30 pm-9:05 pm	6/7/04-7/29/04
LEC 004	TR	6:30 pm-9:05 pm	6/7/04-7/29/04

**MTH 124 FINITE MATHEMATICS****CREDITS: 3 TOUCHSTONE#: 2743**

Prerequisite: MTH 070 (or equivalent) with a grade of C or better or Geometry placement test and MTH 103 with a grade of C or better or placement test. An ACT Math score of 28 or more will satisfy all the previous prerequisites mentioned for this course. TI-83 or TI-83 Plus calculator required.

LEC 001	TR	7:50 am-10:25 am	6/7/04-7/29/04
LEC 002	MW	10:30 am-1:05 pm	6/7/04-7/29/04
LEC 003	MW	6:30 pm-9:05 pm	6/7/04-7/29/04
LEC 004	TR	6:30 pm-9:05 pm	6/7/04-7/29/04

**MTH 134 CALCULUS FOR SOCIAL SCIENTISTS****CREDITS: 4 TOUCHSTONE#: 2745**

Prerequisite: MTH 070 (or equivalent) with a grade of C or better or Geometry placement test and MTH 103 with a grade of C or better or placement test. An ACT Math score of 28 or more will satisfy all the previous prerequisites mentioned for this course. TI-83 or TI-83 Plus calculator required.

LEC 001	TWR	10:30 am-12:50 pm	6/7/04-7/29/04
LEC 002	TR	1:10 pm-4:40 pm	6/7/04-7/29/04
LEC 003	MW	6:30 pm-10:00 pm	6/7/04-7/29/04
LEC 004	TR	6:30 pm-10:00 pm	6/7/04-7/29/04
LEC 005	TR	6:30 pm-10:00 pm	6/7/04-7/29/04

**MTH 165 ELEMENTARY STATISTICS****CREDITS: 4 TOUCHSTONE#: 2746**

Prerequisite: MTH 070 (or equivalent) with a grade of C or better or Geometry placement test and MTH 080 or MTH 087 with a grade of C or better or placement test. An ACT Math score of 23 or more will satisfy all the previous prerequisites mentioned for this course. TI-83 or TI-83 Plus calculator required.

LEC 001	MW	7:00 am-10:25 am	6/7/04-7/29/04
LEC 002	TR	10:30 am-1:55 pm	6/7/04-7/29/04
LEC 003	MW	6:30 pm-10:00 pm	6/7/04-7/29/04
LEC 004	TR	6:30 pm-10:00 pm	6/7/04-7/29/04
LEC 005	MW	6:30 pm-10:00 pm	6/7/04-7/29/04
LEC 006	TR	2:05 pm-5:30 pm	6/7/04-7/29/04
LEC 007	TR	10:30 am-1:55 pm	6/7/04-7/29/04

**MTH 200 CALCULUS WITH ANALYTIC GEOMETRY I****CREDITS: 5 TOUCHSTONE#: 2747**

Prerequisite: MTH 070 (or equivalent) with a grade of C or better or Geometry placement test and MTH 103 and MTH 104 with grades of C or better or placement test. An ACT Math score of 28 or more and MTH 104 with a grade of C or better will satisfy all the previous prerequisites mentioned for this course. Calculator type to be determined by instructor.

LEC 001	MTWR	7:50 am-10:05 am	6/7/04-7/29/04
LEC 002	MTWR	10:30 am-12:45 pm	6/7/04-7/29/04
LEC 003	MTWR	6:30 pm-8:45 pm	6/7/04-7/29/04
LEC 004	MW	6:30 pm-8:45 pm	6/7/04-7/29/04
	TR	6:30 pm-8:45 pm	6/7/04-7/29/04

**MTH 201 CALCULUS WITH ANALYTIC GEOMETRY II****CREDITS: 5 TOUCHSTONE#: 2748**

Prerequisite: MTH 200 with a grade of C or better. Calculator type to be determined by instructor.

LEC 001	MTWR	7:50 am-10:05 am	6/7/04-7/29/04
LEC 002	MTWR	10:30 am-12:45 pm	6/7/04-7/29/04
LEC 003	MTWR	6:30 pm-8:45 pm	6/7/04-7/29/04

**MTH 202 CALCULUS WITH ANALYTIC GEOMETRY III****CREDITS: 4 TOUCHSTONE#: 2749**

Prerequisite: MTH 201 with a grade of C or better. Calculator type to be determined by instructor.

LEC 001	MTWR	10:30 am-12:10 pm	6/7/04-7/29/04
LEC 002	MW	6:30 pm-10:00 pm	6/7/04-7/29/04

**MTH 203 LINEAR ALGEBRA****CREDITS: 3 TOUCHSTONE#: 2750**

Prerequisite: MTH 134 or MTH 200, or concurrent enrollment, or consent of instructor.

LEC 001	TR	6:30 pm-9:05 pm	6/7/04-7/29/04
---------	----	-----------------	----------------

**MTH 212 DIFFERENTIAL EQUATIONS****CREDITS: 3 TOUCHSTONE#: 2752**

Prerequisite: MTH 202 with a grade of C or better.

LEC 001	TR	10:30 am-1:05 pm	6/7/04-7/29/04
LEC 002	TR	6:30 pm-9:05 pm	6/7/04-7/29/04

**Medical Office Administration**

For additional information, call Geri Kale-Smith at 847.925.6444. For classes in related course work, please refer to Human Services.

**MOA 145 HEALTH CARE RECORDS MANAGEMENT****CREDITS: 2 TOUCHSTONE#: 2712**

Prerequisite: HSC 100 and HSC 112 with grades of C or better.

LEC 001	TR	12:00 pm-12:50 pm	6/7/04-7/29/04	FEEES: \$24.00
	TR	1:00 pm-2:40 pm	6/7/04-7/29/04	

**Music**

For additional information, call the Music Office at 847.925.6568.

**MUS 101 FUNDAMENTALS OF MUSIC THEORY****CREDITS: 3 TOUCHSTONE#: 2780**

LEC 001	MW	12:00 pm-2:35 pm	6/7/04-7/29/04
---------	----	------------------	----------------

**MUS 102 INTRODUCTION TO ELECTRONIC/COMPUTER MUSIC****CREDITS: 3 TOUCHSTONE#: 2851**

FEEES: \$12.00

LEC 001	MW	6:30 pm-9:55 pm	6/7/04-7/29/04
---------	----	-----------------	----------------

**MUS 103 MUSIC APPRECIATION****CREDITS: 3 TOUCHSTONE#: 2781**

LEC 001	TR	10:30 am-1:05 pm	6/7/04-7/29/04
---------	----	------------------	----------------

**MUS 112 THEORY OF MUSIC II****CREDITS: 3 TOUCHSTONE#: 2784**

Prerequisite: MUS 111 with a grade of C or better. Corequisite: MUS 116.

LEC 001	TR	10:30 am-1:30 pm	6/7/04-7/29/04
---------	----	------------------	----------------

**MUS 116 AURAL SKILLS II****CREDITS: 1 TOUCHSTONE#: 2786**

Corequisite: MUS 112.

LEC 001	MW	10:30 am-12:00 pm	6/7/04-7/29/04
---------	----	-------------------	----------------

**MUS 165 CLASS PIANO I****CREDITS: 2 TOUCHSTONE#: 2796**

LEC 001	MW	6:30 pm-9:05 pm	6/7/04-7/29/04
---------	----	-----------------	----------------

**MUS 180 FLUTE AND PICCOLO****CREDITS: 1 TOUCHSTONE#: 2801**

LEC 001	TBA		6/7/04-7/29/04
---------	-----	--	----------------

For information contact the Music Office, 847.925.6568

**MUS 181 OBOE AND ENGLISH HORN****CREDITS: 1 TOUCHSTONE#: 2802**

LEC 001	TBA		6/7/04-7/29/04
---------	-----	--	----------------

For information contact the Music Office, 847.925.6568

**MUS 182 CLARINET****CREDITS: 1 TOUCHSTONE#: 2803**

LEC 001	TBA		6/7/04-7/29/04
---------	-----	--	----------------

For information contact the Music Office, 847.925.6568

**MUS 183 BASSOON AND CONTRA BASSOON****CREDITS: 1 TOUCHSTONE#: 2804**

LEC 001	TBA		6/7/04-7/29/04
---------	-----	--	----------------

For information contact the Music Office, 847.925.6568

**MUS 184 SAXOPHONE****CREDITS: 1 TOUCHSTONE#: 2805**

LEC 001	TBA		6/7/04-7/29/04
---------	-----	--	----------------

For information contact the Music Office, 847.925.6568

**MUS 185 FRENCH HORN****CREDITS: 1 TOUCHSTONE#: 2806**

LEC 001	TBA		6/7/04-7/29/04
---------	-----	--	----------------

For information contact the Music Office, 847.925.6568

**MUS 186 TRUMPET****CREDITS: 1 TOUCHSTONE#: 2807**

LEC 001	TBA		6/7/04-7/29/04
---------	-----	--	----------------

For information contact the Music Office, 847.925.6568

**MUS 187 TROMBONE****CREDITS: 1 TOUCHSTONE#: 2808**

LEC 001	TBA		6/7/04-7/29/04
---------	-----	--	----------------

For information contact the Music Office, 825.925.6568

**MUS 188 BARITONE****CREDITS: 1 TOUCHSTONE#: 2809**

LEC 001	TBA		6/7/04-7/29/04
---------	-----	--	----------------

For information contact the Music Office, 847.925.6568

**MUS 189 TUBA****CREDITS: 1 TOUCHSTONE#: 2810**

LEC 001	TBA		6/7/04-7/29/04
---------	-----	--	----------------

For information contact the Music Office, 847.925.6568

**LEGEND****FlexEd\***

- ① Late Start Class
- ② Internet Course
- ③ Open Entry Class
- ④ Telecourse
- ⑤ TeleWeb Course

**DAYS OF THE WEEK**

- M Monday
- T Tuesday
- W Wednesday
- R Thursday

<b>MUS 190 PERCUSSION</b>	<b>CREDITS: 1</b>	<b>TOUCHTONE#: 2811</b>
LEC 001 TBA	6/7/04-7/29/04	FEES: \$271.00
For more information contact the Music Office, 847.925.6568		
<b>MUS 191 VIOLIN</b>	<b>CREDITS: 1</b>	<b>TOUCHTONE#: 2812</b>
LEC 001 TBA	6/7/04-7/29/04	FEES: \$271.00
For information contact the Music Office, 847.925.6568		
<b>MUS 192 VIOLA</b>	<b>CREDITS: 1</b>	<b>TOUCHTONE#: 2813</b>
LEC 001 TBA	6/7/04-7/29/04	FEES: \$271.00
For information contact the Music Office, 847.925.6568		
<b>MUS 193 CELLO</b>	<b>CREDITS: 1</b>	<b>TOUCHTONE#: 2814</b>
LEC 001 TBA	6/7/04-7/29/04	FEES: \$271.00
For information contact the Music Office, 847.925.6568		
<b>MUS 194 STRING BASS</b>	<b>CREDITS: 1</b>	<b>TOUCHTONE#: 2815</b>
LEC 001 TBA	6/7/04-7/29/04	FEES: \$271.00
For information contact the Music Department, 847.925.6568		
<b>MUS 195 HARP</b>	<b>CREDITS: 1</b>	<b>TOUCHTONE#: 2816</b>
LEC 001 TBA	6/7/04-7/29/04	FEES: \$271.00
For information contact the Music Office, 847.925.6568		
<b>MUS 196 PIANO</b>	<b>CREDITS: 1</b>	<b>TOUCHTONE#: 2817</b>
LEC 001 TBA	6/7/04-7/29/04	FEES: \$271.00
For information contact the Music Office, 847.925.6568		
<b>MUS 197 ORGAN</b>	<b>CREDITS: 1</b>	<b>TOUCHTONE#: 2818</b>
LEC 001 TBA	6/7/04-7/29/04	FEES: \$271.00
For information contact the Music Office, 847.925.6568		
<b>MUS 198 VOICE</b>	<b>CREDITS: 1</b>	<b>TOUCHTONE#: 2819</b>
LEC 001 TBA	6/7/04-7/29/04	FEES: \$271.00
For information contact the Music Office, 847.925.6568		
<b>MUS 199 CLASSICAL GUITAR</b>	<b>CREDITS: 1</b>	<b>TOUCHTONE#: 2820</b>
LEC 001 TBA	6/7/04-7/29/04	FEES: \$271.00
For information contact the Music Office, 847.925.6568		

## Nursing

The Nursing Program is a limited enrollment program. To enroll in most courses, students must meet special admission requirements. Contact the Admissions Office, 847.925.6206, for additional information.

<b>NUR 120 PHARMACOLOGY</b>	<b>CREDITS: 2</b>	<b>TOUCHTONE#: 2880</b>
LEC 001 MW	5:00 pm-6:50 pm	6/7/04-7/29/04
① LEC 058 W	6:00 pm-7:00 pm	6/7/04-7/29/04
ORIENTATION Session 6/9 INTERNET CLASS requiring off-campus Internet connection. For information contact the Nursing Department, 847.925.6533		
① LEC 059 W	7:15 pm-8:15 pm	6/7/04-7/29/04
ORIENTATION Session 6/9 INTERNET CLASS requiring off-campus Internet connection. For information contact the Nursing Department, 847.925.6533		

## Paralegal Studies

For additional information, call Paul Guymon at 847.925.6407.

<b>PLS 102 FUNDAMENTALS OF LEGAL RESEARCH</b>	<b>CREDITS: 3</b>	<b>TOUCHTONE#: 2468</b>
Prerequisite: PLS 101 with a grade of C or better or consent of coordinator.		
LEC 001 MW	6:30 pm-9:05 pm	6/7/04-7/29/04
FEES: \$15.00		
<b>PLS 201 TORT AND INSURANCE LAW</b>	<b>CREDITS: 3</b>	<b>TOUCHTONE#: 2473</b>
LEC 001 MW	6:30 pm-9:05 pm	6/7/04-7/29/04
<b>PLS 221 BANKRUPTCY LAW</b>	<b>CREDITS: 3</b>	<b>TOUCHTONE#: 2483</b>
LEC 001 TR	6:30 pm-9:05 pm	6/7/04-7/29/04

## Park and Golf Maintenance

For additional information, call Joyce Grattoni at 847.925.6877. For additional classes in related course work, please refer to Plant Science Technology.

<b>PKM 150 PARK AND PLANT SCIENCE INTERNSHIP</b>	<b>CREDITS: 5</b>	<b>TOUCHTONE#:</b>
Prerequisite: Minimum 15 semester hours of PKM or PST courses and consent of coordinator.		
LEC 001 TBA	6/7/04-7/29/04	

## Philosophy

For additional information, call Colleen Burns at 847.925.6989.

<b>PHI 101 CRITICAL THINKING</b>	<b>CREDITS: 3</b>	<b>TOUCHTONE#: 3026</b>
LEC 001 MW	10:30 am-1:05 pm	6/7/04-7/29/04
LEC 002 MW	6:30 pm-9:05 pm	6/7/04-7/29/04
<b>PHI 105 INTRODUCTION TO PHILOSOPHY</b>	<b>CREDITS: 3</b>	<b>TOUCHTONE#: 3012</b>
LEC 001 MW	1:10 pm-3:45 pm	6/7/04-7/29/04
LEC 002 TR	7:50 am-10:25 am	6/7/04-7/29/04
LEC 003 MW	6:30 pm-9:05 pm	6/7/04-7/29/04
LEC 004 TR	6:30 pm-9:05 pm	6/7/04-7/29/04
LEC 070 MTWR	10:30 am-1:05 pm	6/7/04-7/1/04
① LEC 080 MTWR	10:30 am-1:05 pm	7/5/04-7/29/04
<b>PHI 115 ETHICS</b>	<b>CREDITS: 3</b>	<b>TOUCHTONE#: 3014</b>
LEC 001 MW	7:50 am-10:25 am	6/7/04-7/29/04
LEC 002 MW	1:10 pm-3:45 pm	6/7/04-7/29/04
LEC 003 TR	7:50 am-10:25 am	6/7/04-7/29/04
LEC 004 TR	1:10 pm-3:45 pm	6/7/04-7/29/04
LEC 005 MW	6:30 pm-9:05 pm	6/7/04-7/29/04
LEC 006 TR	6:30 pm-9:05 pm	6/7/04-7/29/04

<b>PHI 205 RELIGIONS OF THE WORLD</b>	<b>CREDITS: 3</b>	<b>TOUCHTONE#: 3018</b>
LEC 001 MW	7:50 am-10:25 am	6/7/04-7/29/04
LEC 002 MW	3:50 pm-6:25 pm	6/7/04-7/29/04
LEC 003 TR	7:50 am-10:25 am	6/7/04-7/29/04
LEC 004 TR	1:10 pm-3:45 pm	6/7/04-7/29/04
LEC 005 TR	6:30 pm-9:05 pm	6/7/04-7/29/04

## Physical Education

For additional information, call Sue Overland at 847.925.6466.

<b>PED 105 BASKETBALL</b>	<b>CREDITS: 0.5</b>	<b>TOUCHTONE#: 2934</b>
① LEC 080 MW	6:30 pm-8:10 pm	7/5/04-7/29/04
<b>PED 106 WEIGHT TRAINING—OLYMPIC AND POWER</b>	<b>CREDITS: 1</b>	<b>TOUCHTONE#: 2935</b>
LEC 001 MW	7:50 pm-9:30 pm	6/7/04-7/29/04
<b>PED 119 PILATES</b>	<b>CREDITS: 0.5</b>	<b>TOUCHTONE#: 2932</b>
LEC 001 TR	1:10 pm-2:00 pm	6/7/04-7/29/04
LEC 002 TR	5:30 pm-6:20 pm	6/7/04-7/29/04
<b>PED 120 TOUCH FOOTBALL</b>	<b>CREDITS: 1</b>	<b>TOUCHTONE#: 2937</b>
LEC 001 MW	6:00 pm-7:40 pm	6/7/04-7/29/04
LEC 002 MW	6:00 pm-7:40 pm	6/7/04-7/29/04
<b>PED 122 YOGA</b>	<b>CREDITS: 1</b>	<b>TOUCHTONE#: 2983</b>
LEC 001 MW	10:50 am-12:30 pm	6/7/04-7/29/04
LEC 002 MTWR	4:30 pm-5:20 pm	6/7/04-7/29/04
<b>PED 140 HIPS, ABS, THIGHS</b>	<b>CREDITS: 0.5</b>	<b>TOUCHTONE#: 2943</b>
LEC 001 TR	12:10 pm-1:00 pm	6/7/04-7/29/04
<b>PED 149 PRESCRIBED EXERCISES</b>	<b>CREDITS: 1</b>	<b>TOUCHTONE#: 2944</b>
LEC 001 TR	6:00 pm-7:40 pm	6/7/04-7/29/04
<b>PED 152 GOLF</b>	<b>CREDITS: 0.5</b>	<b>TOUCHTONE#: 2946</b>
LEC 070 TR	5:30 pm-7:10 pm	6/7/04-7/1/04
HIGHLAND WOODS GOLF COURSE		
① LEC 080 TR	5:30 pm-7:10 pm	7/5/04-7/29/04
HIGHLAND WOODS GOLF COURSE		
<b>PED 158 TENNIS</b>	<b>CREDITS: 0.5</b>	<b>TOUCHTONE#: 2951</b>
LEC 070 TR	6:00 pm-7:40 pm	6/7/04-7/1/04
① LEC 080 TR	6:00 pm-7:40 pm	7/5/04-7/29/04
<b>PED 163 CARDIO KICKBOXING</b>	<b>CREDITS: 0.5</b>	<b>TOUCHTONE#: 2955</b>
LEC 001 MW	12:10 pm-1:00 pm	6/7/04-7/29/04
LEC 002 TR	6:30 pm-7:20 pm	6/7/04-7/29/04
<b>PED 163 SPINNING</b>	<b>CREDITS: 0.5</b>	<b>TOUCHTONE#: 2955</b>
LEC 003 MW	6:30 pm-7:20 pm	6/7/04-7/29/04
LEC 004 TR	6:30 pm-7:20 pm	6/7/04-7/29/04
<b>PED 178 JUDO AND SELF-DEFENSE/BEGINNING</b>	<b>CREDITS: 1</b>	<b>TOUCHTONE#: 2960</b>
LEC 001 MW	8:45 am-10:25 am	6/7/04-7/29/04
<b>PED 179 JUDO AND SELF-DEFENSE/ADVANCED</b>	<b>CREDITS: 1</b>	<b>TOUCHTONE#: 2961</b>
Prerequisite: PED 178 with a grade of C or better or consent of instructor.		
LEC 001 MW	7:15 pm-8:55 pm	6/7/04-7/29/04
<b>PED 195 PHYSICAL FITNESS I</b>	<b>CREDITS: 1</b>	<b>TOUCHTONE#: 2962</b>
Prerequisite: Prior to beginning the program, a physician supervised exercise stress test is required for men over 40, women over 50, and all individuals regardless of age who have multiple cardiovascular risk factors. The stress test will be waived provided a written physician's clearance can be obtained.		
LEC 001 MW	11:00 am-12:40 pm	6/7/04-7/29/04
LEC 002 TR	6:00 pm-7:40 pm	6/7/04-7/29/04
FEES: \$15.00		
<b>PED 201 STANDARD FIRST AID</b>	<b>CREDITS: 3</b>	<b>TOUCHTONE#: 2965</b>
LEC 001 TR	7:50 am-10:25 am	6/7/04-7/29/04
FEES: \$15.00		
<b>PED 203 HEALTH</b>	<b>CREDITS: 3</b>	<b>TOUCHTONE#: 2966</b>
LEC 001 MW	7:50 am-10:25 am	6/7/04-7/29/04
LEC 002 MW	6:30 pm-9:05 pm	6/7/04-7/29/04
LEC 003 TR	10:30 am-1:05 pm	6/7/04-7/29/04
① LEC 004 MTWR	6:00 pm-9:20 pm	7/12/04-7/29/04
① LEC 050 M	6:30 pm-7:30 pm	6/7/04-7/29/04
TELECOURSE Orientation Session 6/7		
① LEC 059 T	5:30 pm-6:30 pm	6/7/04-7/29/04
FEES: \$20.00		
ORIENTATION SESSION 6/8 TELEWEB CLASS requiring off-campus Internet connection and ability to get the Harper College educational access channel or rent VHS tapes from the Bookstore		
<b>PED 205 DRUGS IN OUR CULTURE</b>	<b>CREDITS: 2</b>	<b>TOUCHTONE#: 2967</b>
① LEC 050 T	5:15 pm-6:15 pm	6/7/04-7/29/04
FEES: \$20.00		
TELECOURSE Orientation Session 6/8		
<b>PED 207 HUMAN SEXUALITY</b>	<b>CREDITS: 2</b>	<b>TOUCHTONE#: 2969</b>
LEC 001 MW	10:30 am-12:10 pm	6/7/04-7/29/04

## Physical Science

For additional information, call Debbie Damcott at 847.925.6725.

<b>PHS 101 PHYSICAL SCIENCE SURVEY</b>	<b>CREDITS: 3</b>	<b>TOUCHTONE#: 3048</b>
LEC 001 M	6:30 pm-9:15 pm	6/7/04-7/29/04
W	6:30 pm-9:15 pm	6/7/04-7/29/04
① LEC 058 M	5:30 pm-6:30 pm	6/7/04-7/29/04
FEES: \$20.00		
MANDATORY Orientation Session 6/7 INTERNET CLASS requiring off-campus Internet connection. For information contact instructor at: cmarsh@harpercollege.edu		
① LEC 059 M	6:40 pm-7:40 pm	6/7/04-7/29/04
FEES: \$20.00		
MANDATORY Orientation Session 6/7 INTERNET CLASS requiring off-campus Internet connection. For information contact instructor at: cmarsh@harpercollege.edu		
<b>PHS 111 INTRODUCTION TO PHYSICAL SCIENCE</b>	<b>CREDITS: 4</b>	<b>TOUCHTONE#: 3050</b>
LEC 001 MTR	8:50 am-12:05 pm	6/7/04-7/29/04
FEES: \$25.00		

## Physics

For additional information, call Debbie Damcott at 847.925.6725.

<b>PHY 121</b>	<b>INTRODUCTORY PHYSICS I</b>	<b>CREDITS: 5</b>	<b>TOUCHTONE#: 3111</b>
Prerequisite: MTH 103 and MTH 104 with grades of C or better, or MTH 140 with a grade of C or better.			
LEC 001	MTR	12:30 pm-4:40 pm	6/7/04-7/29/04 FEES: \$30.00
<b>PHY 122</b>	<b>INTRODUCTORY PHYSICS II</b>	<b>CREDITS: 5</b>	<b>TOUCHTONE#: 3112</b>
Prerequisite: PHY 121 with a grade of C or better or consent of instructor.			
LEC 001	MTR	6:00 pm-10:10 pm	6/7/04-7/29/04 FEES: \$30.00
<b>PHY 203</b>	<b>GENERAL PHYSICS III—WAVE MOTION, SOUND, LIGHT</b>	<b>CREDITS: 4</b>	<b>TOUCHTONE#: 3115</b>
Prerequisite: MTH 212 with a grade of C or better or concurrent enrollment and PHY 202 with a grade of C or better.			
LEC 001	MTR	6:00 pm-9:15 pm	6/7/04-7/29/04 FEES: \$30.00

## Plant Science Technology

For additional information, call Joyce Grattoni at 847.925.6877. For additional classes in related course work, please refer to Park and Golf Maintenance.

<b>PST 101</b>	<b>WOODY PLANTS</b>	<b>CREDITS: 4</b>	<b>TOUCHTONE#: 3207</b>
LEC 001	TR	3:00 pm-8:00 pm	6/7/04-7/29/04 FEES: \$50.00
<b>PST 103</b>	<b>HERBACEOUS PLANTS</b>	<b>CREDITS: 4</b>	<b>TOUCHTONE#: 3223</b>
LEC 001	MW	3:00 pm-8:00 pm	6/7/04-7/29/04 FEES: \$50.00
<b>PST 104</b>	<b>BEGINNING FLORAL DESIGN</b>	<b>CREDITS: 3</b>	<b>TOUCHTONE#: 3209</b>
LEC 001	MW	6:00 pm-10:20 pm	6/7/04-7/29/04 FEES: \$150.00

## Political Science

<b>PSC 101</b>	<b>AMERICAN POLITICS AND GOVERNMENT</b>	<b>CREDITS: 3</b>	<b>TOUCHTONE#: 3176</b>
LEC 001	MW	6:30 pm-9:05 pm	6/7/04-7/29/04
LEC 050	M	5:00 pm-6:00 pm	6/7/04-7/29/04 FEES: \$20.00
TELE COURSE Mandatory Orientation Session 6/7			

## Psychology

For additional information, contact Elayne Thompson, 847.925.6434 or ethomps@harpercollege.edu

<b>PSY 101</b>	<b>INTRODUCTION TO PSYCHOLOGY</b>	<b>CREDITS: 3</b>	<b>TOUCHTONE#: 3247</b>
LEC 001	MW	7:50 am-10:25 am	6/7/04-7/29/04
LEC 002	MW	10:30 am-1:05 pm	6/7/04-7/29/04
LEC 003	MW	6:30 pm-9:05 pm	6/7/04-7/29/04
LEC 004	MW	6:30 pm-9:05 pm	6/7/04-7/29/04
LEC 005	MW	6:30 pm-9:05 pm	6/7/04-7/29/04
NORTHEAST CENTER			
LEC 006	TR	10:30 am-1:05 pm	6/7/04-7/29/04
Honors Students Only. Contact Andrew Wilson, L244, 847.925.6791.			
LEC 007	TR	10:30 am-1:05 pm	6/7/04-7/29/04
LEC 008	TR	1:10 pm-3:45 pm	6/7/04-7/29/04
LEC 009	TR	5:30 pm-8:05 pm	6/7/04-7/29/04
LEC 010	TR	6:30 pm-9:05 pm	6/7/04-7/29/04
LEC 011	TR	1:10 pm-3:45 pm	6/7/04-7/29/04
LEC 050	M	5:00 pm-6:15 pm	6/7/04-7/29/04 FEES: \$20.00
MANDATORY TELE COURSE Orientation 6/7			
LEC 059	T	5:00 pm-5:30 pm	6/7/04-7/29/04 FEES: \$20.00
MANDATORY ORIENTATION Session 6/8 INTERNET CLASS requiring off-campus Internet connection. For information contact instructor at: ethomps@harpercollege.edu			

For additional information on PSY 106, call the Learning Achievement Program at 847.925.6715.

<b>PSY 106</b>	<b>PRACTICAL PSYCHOLOGY</b>	<b>CREDITS: 3</b>	<b>TOUCHTONE#: 3259</b>
LEC 001	TR	6:00 pm-9:05 pm	6/14/04-7/29/04
LEC 002	MTWR	9:00 am-12:30 pm	7/26/04-8/12/04
LEC 059	T	4:00 pm-5:00 pm	6/14/04-7/29/04 FEES: \$20.00
ORIENTATION Session 6/15 INTERNET CLASS requiring off-campus Internet connection. For information contact instructor at: sfarmer@harpercollege.edu			

For additional information on PSY 107, call Karin LaCour-Rivers at 847.925.6522.

<b>PSY 107</b>	<b>HUMANISTIC PSYCHOLOGY</b>	<b>CREDITS: 2</b>	<b>TOUCHTONE#: 3260</b>
LEC 001	M	10:30 am-1:50 pm	6/7/04-7/29/04 FEES: \$5.00

For additional information, contact Elayne Thompson, 847.925.6434 or ethomps@harpercollege.edu

<b>PSY 216</b>	<b>CHILD PSYCHOLOGY I</b>	<b>CREDITS: 3</b>	<b>TOUCHTONE#: 3251</b>
Prerequisite: PSY 101.			
LEC 001	TR	6:40 pm-9:15 pm	6/7/04-7/29/04
LEC 059	T	5:40 pm-6:25 pm	6/7/04-7/29/04 FEES: \$20.00
MANDATORY ORIENTATION Session 6/8 INTERNET CLASS requiring off-campus Internet connection. For information contact instructor at: ethomps@harpercollege.edu			
<b>PSY 217</b>	<b>ADOLESCENT PSYCHOLOGY</b>	<b>CREDITS: 3</b>	<b>TOUCHTONE#: 3252</b>
Prerequisite: PSY 101.			
LEC 001	MW	6:30 pm-9:05 pm	6/7/04-7/29/04
<b>PSY 225</b>	<b>THEORIES OF PERSONALITY</b>	<b>CREDITS: 3</b>	<b>TOUCHTONE#: 3255</b>
Prerequisite: PSY 101.			
LEC 001	TR	6:30 pm-9:05 pm	6/7/04-7/29/04
<b>PSY 228</b>	<b>PSYCHOLOGY OF HUMAN DEVELOPMENT</b>	<b>CREDITS: 3</b>	<b>TOUCHTONE#: 3256</b>
Prerequisite: PSY 101.			
LEC 001	MW	7:00 pm-9:35 pm	6/7/04-7/29/04
LEC 002	W	7:50 am-10:20 am	6/7/04-7/29/04
	W	10:30 am-1:05 pm	6/7/04-7/29/04
<b>PSY 230</b>	<b>ABNORMAL PSYCHOLOGY</b>	<b>CREDITS: 3</b>	<b>TOUCHTONE#: 3257</b>
Prerequisite: PSY 101.			
LEC 001	TR	9:30 am-12:00 pm	6/7/04-7/29/04
LEC 059	T	5:00 pm-6:00 pm	6/7/04-7/29/04 FEES: \$20.00
MANDATORY ORIENTATION Session 6/8 TELEWEB CLASS requiring off-campus Internet connection and ability to get the Harper College educational access channel or rent VHS tapes from the Bookstore.			
<b>PSY 245</b>	<b>INDUSTRIAL/ORGANIZATIONAL PSYCHOLOGY</b>	<b>CREDITS: 3</b>	<b>TOUCHTONE#: 3262</b>
Prerequisite: PSY 101.			
LEC 059	M	5:00 pm-6:15 pm	6/7/04-7/29/04 FEES: \$20.00
MANDATORY ORIENTATION Session 6/7 INTERNET CLASS requiring off-campus Internet connection. For information contact instructor at: jpunte@harpercollege.edu			

## Reading

For additional information, call the Learning Achievement Program at 847.925.6715.

<b>RDG 090</b>	<b>FUNDAMENTALS OF READING</b>	<b>CREDITS: 3</b>	<b>TOUCHTONE#: 3351</b>
LEC 001	TR	9:00 am-12:05 pm	6/14/04-7/29/04 FEES: \$15.00
<b>RDG 099</b>	<b>DEVELOPMENTAL READING</b>	<b>CREDITS: 3</b>	<b>TOUCHTONE#: 3352</b>
Prerequisite: RDG 090 or the Harper College reading placement test with an acceptable score.			
LEC 001	TR	6:00 pm-9:05 pm	6/14/04-7/29/04
LEC 002	MTWR	9:00 am-11:30 am	7/19/04-8/12/04

## Real Estate

For additional information, call Maria Coons at 847.925.6563.

<b>RES 101</b>	<b>REAL ESTATE TRANSACTIONS</b>	<b>CREDITS: 3</b>	<b>TOUCHTONE#: 3381</b>
LEC 001	MW	10:30 am-1:05 pm	6/7/04-7/29/04
LEC 002	MW	6:35 pm-9:15 pm	6/7/04-7/29/04
LEC 059	T	5:00 pm-6:00 pm	6/7/04-7/29/04 FEES: \$20.00
ORIENTATION Session 6/8 INTERNET CLASS requiring off-campus Internet connection. For information contact instructor at: goortesi@aol.com			
<b>RES 140</b>	<b>STANDARDS OF PROFESSIONAL APPRAISAL PRACTICE</b>	<b>CREDITS: 1</b>	<b>TOUCHTONE#: 3384</b>
LEC 001	MW	6:30 pm-10:00 pm	8/2/04-8/11/04
<b>RES 141</b>	<b>BASIC PRINCIPLES OF APPRAISAL</b>	<b>CREDITS: 2</b>	<b>TOUCHTONE#: 3385</b>
LEC 070	MW	6:30 pm-10:00 pm	6/7/04-7/1/04
<b>RES 142</b>	<b>SINGLE FAMILY APPRAISAL/RESIDENT VALUATION PROCEDURES</b>	<b>CREDITS: 2</b>	<b>TOUCHTONE#: 3386</b>
LEC 080	MW	6:30 pm-10:00 pm	7/5/04-7/29/04
<b>RES 190</b>	<b>CONTRACTS AND CONVEYANCING</b>	<b>CREDITS: 1</b>	<b>TOUCHTONE#: 3397</b>
Prerequisite: RES 101 with a grade of C or better or consent of instructor.			
LEC 059	R	5:00 pm-6:15 pm	6/7/04-7/29/04 FEES: \$20.00
MANDATORY ORIENTATION Session June 10, 5:00-6:15pm, in room I-225. INTERNET CLASS requiring off-campus Internet connection. For information contact instructor at: goortesi@aol.com			
<b>RES 192</b>	<b>ADVANCED PRINCIPLES OF REAL ESTATE</b>	<b>CREDITS: 1</b>	<b>TOUCHTONE#: 3398</b>
Prerequisite: RES 101 with a grade of C or better or consent of instructor.			
LEC 059	R	6/7/04-7/29/04	FEES: \$20.00
MANDATORY ORIENTATION Session June 10, 5:00-6:15pm, in room I-225. INTERNET CLASS requiring off-campus Internet connection. For information contact instructor at: goortesi@aol.com			
<b>RES 194</b>	<b>REAL ESTATE FINANCE</b>	<b>CREDITS: 1</b>	<b>TOUCHTONE#: 3399</b>
Prerequisite: RES 101 with a grade of C or better or consent of instructor.			
LEC 059	R	6/7/04-7/29/04	FEES: \$20.00
MANDATORY ORIENTATION Session June 10, 5:00-6:15pm, in room I-225. INTERNET CLASS requiring off-campus Internet connection. For information contact instructor at: goortesi@aol.com			
<b>RES 196</b>	<b>PROPERTY MANAGEMENT</b>	<b>CREDITS: 1</b>	<b>TOUCHTONE#: 3400</b>
Prerequisite: RES 101 with a grade of C or better or consent of instructor.			
LEC 059	R	6/7/04-7/29/04	FEES: \$20.00
MANDATORY ORIENTATION Session June 10, 5:00-6:15pm, in room I-225. INTERNET CLASS requiring off-campus Internet connection. For information contact instructor at: goortesi@aol.com			

## LEGEND

### FlexEd®

- Ⓛ Late Start Class
- Ⓜ Internet Course
- Ⓞ Open Entry Class
- Ⓣ Telecourse
- ⓐ TeleWeb Course

### DAYS OF THE WEEK

- M Monday
- T Tuesday
- W Wednesday
- R Thursday



- RES 198 BROKERAGE ADMINISTRATION** CREDITS: 1 TOUCHSTONE#: 3401  
Prerequisite: RES 101 with a grade of C or better or consent of instructor.
- ① LEC 059 R 6/7/04-7/29/04 FEES: \$20.00  
MANDATORY ORIENTATION Session June 10, 5:00-6:15pm, in room I-225. INTERNET CLASS requiring off-campus Internet connection. For information contact instructor at gcortesi@aol.com

## Sign Language

For additional information, call Joan Fiske at 847.925.6415.

### SIGN LANGUAGE INTERPRETING PROGRAM INFORMATION SESSION

Monday, July 12, 2004, 7-9 p.m.

Plan to attend this informal meeting to learn the requirements for entry into the Sign Language Interpreting Program and to get information regarding course offerings in American Sign Language studies. Meet with Joan Fiske, program coordinator and Peggy Weaver, lab supervisor and materials specialist.

Information meetings are conducted in spoken English.  
Requests for sign language interpreters must be received at least five business days prior to a meeting.

To register for this session or for more information,  
call 847.925.6415 (V) or 847.925.6772 (TTY).

- SGN 101 AMERICAN SIGN LANGUAGE I** CREDITS: 4 TOUCHSTONE#: 3480  
LEC 001 MW 6:00 pm-9:30 pm 6/7/04-7/29/04  
LEC 002 TR 6:00 pm-9:30 pm 6/7/04-7/29/04  
LEC 003 TR 10:35 am-2:05 pm 6/7/04-7/29/04
- SGN 102 AMERICAN SIGN LANGUAGE II** CREDITS: 4 TOUCHSTONE#: 3481  
Prerequisite: SGN 101 with a grade of C or better or consent of department chair.  
LEC 001 TR 6:00 pm-9:30 pm 6/7/04-7/29/04
- SGN 103 FINGERSPELLING AND NUMBERING SYSTEMS IN ASL** CREDITS: 3 TOUCHSTONE#: 3475  
Prerequisite: SGN 101 with a grade of C or better, or consent of department chair.  
LEC 001 MW 6:15 pm-9:00 pm 6/7/04-7/29/04 FEES: \$15.00
- SGN 201 AMERICAN SIGN LANGUAGE III** CREDITS: 4 TOUCHSTONE#: 3482  
Prerequisite: SGN 102 with a grade of C or better or consent of department chair.  
LEC 001 MW 6:00 pm-9:30 pm 6/7/04-7/29/04
- SGN 202 AMERICAN SIGN LANGUAGE IV** CREDITS: 3 TOUCHSTONE#: 3477  
Prerequisite: SGN 201 with a grade of C or better or consent of department chair.  
LEC 001 TR 6:35 pm-9:15 pm 6/7/04-7/29/04

## Sociology

For additional information, call Helmut Publ at 847.925.6433.

- SOC 101 INTRODUCTION TO SOCIOLOGY** CREDITS: 3 TOUCHSTONE#: 3505  
LEC 001 MW 10:30 am-1:05 pm 6/7/04-7/29/04  
LEC 002 MW 1:10 pm-3:45 pm 6/7/04-7/29/04  
LEC 003 MW 6:30 pm-9:05 pm 6/7/04-7/29/04  
LEC 004 TR 10:30 am-1:05 pm 6/7/04-7/29/04  
LEC 005 TR 1:10 pm-3:45 pm 6/7/04-7/29/04  
LEC 006 TR 6:30 pm-9:05 pm 6/7/04-7/29/04  
① LEC 050 W 5:00 pm-6:00 pm 6/7/04-7/29/04 FEES: \$20.00  
TELECOURSE Orientation Session 6/9
- SOC 120 FAMILY IN CONTEMPORARY SOCIETY** CREDITS: 3 TOUCHSTONE#: 3506  
Prerequisite: SOC 101 with a grade of C or better or consent of instructor.  
① LEC 050 T 5:15 pm-6:15 pm 6/7/04-7/29/04 FEES: \$20.00  
TELECOURSE Orientation Session 6/8
- SOC 205 SOCIAL PROBLEMS** CREDITS: 3 TOUCHSTONE#: 3507  
Prerequisite: SOC 101 with a grade of C or better.  
LEC 001 TR 1:10 pm-3:45 pm 6/7/04-7/29/04  
① LEC 050 M 5:00 pm-6:15 pm 6/7/04-7/29/04 FEES: \$20.00  
TELECOURSE Orientation Session 6/7
- SOC 215 INTRODUCTION TO SOCIAL PSYCHOLOGY** CREDITS: 3 TOUCHSTONE#: 3509  
Prerequisite: PSY 101 or SOC 101 with a grade of C or better.  
LEC 001 TR 6:30 pm-9:05 pm 6/7/04-7/29/04
- SOC 235 RACE AND ETHNICITY** CREDITS: 3 TOUCHSTONE#: 3512  
Prerequisite: SOC 101 with a grade of C or better.  
LEC 001 TR 1:10 pm-3:45 pm 6/7/04-7/29/04

## Spanish

For additional information on 100 level courses, contact John Finan at 847.925.6256. For additional information on 200 level courses, call Ana Hernandez at 847.925.6886.

- SPA 101 ELEMENTARY SPANISH I** CREDITS: 4 TOUCHSTONE#: 3536  
LEC 001 MW 6:00 pm-9:30 pm 6/7/04-7/29/04  
LEC 002 MTWR 11:00 am-12:45 pm 6/7/04-7/29/04  
LEC 003 TR 6:00 pm-9:30 pm 6/7/04-7/29/04  
LEC 005 MW 12:00 pm-3:30 pm 6/7/04-7/29/04
- SPA 102 ELEMENTARY SPANISH II** CREDITS: 4 TOUCHSTONE#: 3537  
Prerequisite: SPA 101 with a grade of C or better, two years of high school Spanish or consent of instructor.  
LEC 001 MW 9:10 am-12:40 pm 6/7/04-7/29/04  
LEC 002 MW 6:00 pm-9:30 pm 6/7/04-7/29/04
- SPA 201 INTERMEDIATE SPANISH** CREDITS: 4 TOUCHSTONE#: 3538  
Prerequisite: SPA 102 with a grade of C or better, two years of high school Spanish or consent of instructor.  
LEC 001 TR 9:10 am-12:40 pm 6/7/04-7/29/04  
LEC 002 MW 6:00 pm-9:30 pm 6/7/04-7/29/04
- SPA 202 INTERMEDIATE SPANISH** CREDITS: 4 TOUCHSTONE#: 3539  
Prerequisite: SPA 201 with a grade of C or better, three years high school Spanish or consent of instructor.  
LEC 001 MTWR 9:00 am-10:45 am 6/7/04-7/29/04
- SPA 205 INTENSIVE ORAL PRACTICE** CREDITS: 2 TOUCHSTONE#: 3540  
Prerequisite: SPA 202 with a grade of C or better, or equivalent or consent of instructor.  
LEC 001 TR 6:00 pm-8:40 pm 6/7/04-7/29/04

## Speech and Theatre

For additional information, call Todd Ballantyne at 847.925.6743.

- SPE 101 FUNDAMENTALS OF SPEECH COMMUNICATION** CREDITS: 3 TOUCHSTONE#: 3567  
LEC 001 MW 7:50 am-10:25 am 6/7/04-7/29/04  
LEC 002 MW 7:50 am-10:25 am 6/7/04-7/29/04  
LEC 003 MW 10:30 am-1:05 pm 6/7/04-7/29/04  
LEC 004 MW 10:30 am-1:05 pm 6/7/04-7/29/04  
LEC 005 MW 1:10 pm-3:45 pm 6/7/04-7/29/04  
LEC 006 TR 7:50 am-10:25 am 6/7/04-7/29/04  
LEC 007 TR 7:50 am-10:25 am 6/7/04-7/29/04  
LEC 008 TR 7:50 am-10:25 am 6/7/04-7/29/04  
LEC 009 TR 10:30 am-1:05 pm 6/7/04-7/29/04  
LEC 010 TR 10:30 am-1:05 pm 6/7/04-7/29/04  
LEC 011 TR 10:30 am-1:05 pm 6/7/04-7/29/04  
LEC 012 TR 10:30 am-1:05 pm 6/7/04-7/29/04  
LEC 014 MW 10:30 am-1:05 pm 6/7/04-7/29/04  
LEC 015 MW 6:30 pm-9:05 pm 6/7/04-7/29/04  
LEC 017 MW 6:30 pm-9:05 pm 6/7/04-7/29/04  
LEC 018 MW 6:30 pm-9:05 pm 6/7/04-7/29/04  
LEC 019 MW 6:30 pm-9:05 pm 6/7/04-7/29/04  
LEC 021 MW 6:30 pm-9:05 pm 6/7/04-7/29/04  
LEC 022 TR 6:30 pm-9:05 pm 6/7/04-7/29/04  
LEC 024 TR 6:30 pm-9:05 pm 6/7/04-7/29/04  
LEC 025 TR 6:30 pm-9:05 pm 6/7/04-7/29/04  
LEC 026 TR 6:30 pm-9:05 pm 6/7/04-7/29/04  
Honors students only. Contact Andrew Wilson, L244, 847.925.6791  
LEC 027 MW 1:10 pm-3:45 pm 6/7/04-7/29/04  
LEC 028 MW 3:50 pm-6:25 pm 6/7/04-7/29/04  
LEC 029 MTWR 10:30 am-1:05 pm 5/24/04-6/17/04  
LEC 030 MTWR 1:10 pm-3:35 pm 5/24/04-6/17/04  
LEC 031 TR 7:50 am-10:25 am 6/7/04-7/29/04  
LEC 032 TR 10:30 am-1:05 pm 6/7/04-7/29/04
- SPE 111 INTRODUCTION TO THE THEATRE** CREDITS: 3 TOUCHSTONE#: 3570  
LEC 001 MW 10:30 am-1:05 pm 6/7/04-7/29/04
- SPE 180 APPLIED FORENSICS I** CREDITS: 1 TOUCHSTONE#: 3572  
LEC 001 W 4:00 pm-6:00 pm 6/7/04-7/29/04
- SPE 181 APPLIED FORENSICS II** CREDITS: 1 TOUCHSTONE#: 3573  
Prerequisite: SPE 180 with a grade of C or better.  
LEC 001 W 4:00 pm-6:00 pm 6/7/04-7/29/04
- SPE 205 GROUP DISCUSSION** CREDITS: 3 TOUCHSTONE#: 3576  
LEC 001 TR 10:30 am-1:05 pm 6/7/04-7/29/04
- SPE 212 ACTING I** CREDITS: 3 TOUCHSTONE#: 3577  
LEC 001 MW 6:35 pm-9:15 pm 6/7/04-7/29/04

# English as a Second Language (ESL)

## Building F, Room F340

For additional information, call 847.925.6226

- Classes for native speakers of other languages. Students' educational levels range from seven years to completion of graduate/professional programs.
- Beginning, intermediate and advanced levels in the summer program.
- Enrollment in any ESL course or program requires permission from ESL faculty and staff. Permission is given on designated registration days.
- All students interested in enrolling in ESL courses who are new to the ESL Department are required to test.
- ESL registration must be done in person. **Web and Touchtone registration are not available for ESL enrollment.**
- Non-transferable credit classes. (ESL courses do not count toward a degree at Harper College.)
- Most part-time summer ESL courses are for practice only and do not count toward advancement in academic courses.
- ESL courses are credit courses and do require that students pay for ESL classes. Tuition and fee rates are shown on page 5.

## ESL Course Registration

### By appointment only.

Testing and registration for ESL classes begins in May for summer IEP 2004 courses and in June for summer part-time courses. Turn in a Harper College application in C102; then, go to the ESL Office, F340-parking lot #2-to make an appointment. The ESL Office starts giving appointments in March. Appointments will only be given to students who have turned in a completed application.

## Intensive English Program (IEP)

- High school diploma from a U.S. high school or a high school outside the U.S. is required for enrollment.
- Four levels: beginning through high-intermediate; 14-15 credit hours per level; courses meet approximately 9 a.m.-4 p.m., Monday-Thursday. The IEP will begin on Monday, May 10, and end July 29.
- Meets full-time study requirement for international (F-1) students.
- Students needing a student visa (F-1): Complete all Harper College international student application forms by March 15 for summer semester admission. If the application forms are not received in the International Student Office (Building F, Room F340) by March 15, an I-20 may not be issued for the summer semester.

## Part-time Academic Program (PTP)

- Designed for academically-bound students whose native language is not English.
- Students preparing to enroll in English 101 must complete Writing V or Editing Skills in addition to Reading V with grades of A or B.
- Reading IV, Reading V, Writing IV and Writing V are only available to students enrolled in Spring 2004 ESL courses.

## ESL Part-time Summer Program

The following ESL courses are for practice only and do not count toward advancement in academic ESL courses.

ESL 005	Grammar Review-low intermediate	Credits: 2
010 TR	10:35 am-12:15 pm	6/7/04-7/29/04
020 TR	6:20 pm-8:00 pm	6/7/04-7/29/04
ESL 007	Grammar Review-high intermediate	Credits: 2
010 MW	10:35 am-12:15 pm	6/7/04-7/29/04
020 MW	8:00 pm-9:40 pm	6/7/04-7/29/04
025 TR	8:10 pm-9:50 pm	6/7/04-7/29/04
ESL058	Spelling Strategies-high intermediate	Credits: 2
010 MW	10:35 am-12:15 pm	6/7/04-7/29/04
020 TR	6:20 pm-8:00 pm	6/7/04-7/29/04
ESL 018	Conversation I	Credits: 2
010 TR	8:45 am-10:25 am	6/7/04-7/29/04
020 TR	8:10 pm-9:50 pm	6/7/04-7/29/04
ESL 028	Conversation II	Credits: 2
010 TR	8:45 am-10:25 am	6/7/04-7/29/04
020 TR	8:10 pm-9:50 pm	6/7/04-7/29/04
ESL 038	Conversation III	Credits: 2
010 TR	8:45 am-10:25 am	6/7/04-7/29/04
015 MW	8:45 am-10:25 am	6/7/04-7/29/04
020 TR	8:10 pm-9:50 pm	6/7/04-7/29/04
025 MW	8:00 pm-9:40 pm	6/7/04-7/29/04
ESL 039	Conversation IV	Credits: 2
010 TR	8:45 am-10:25 am	6/7/04-7/29/04
015 MW	8:45 am-10:25 am	6/7/04-7/29/04
020 TR	8:10 pm-9:50 pm	6/7/04-7/29/04
025 MW	8:00 pm-9:40 pm	6/7/04-7/29/04
ESL 059	Conversation V	Credits: 2
010 MW	8:45 am-10:25 am	6/7/04-7/29/04
015 TR	8:45 am-10:25 am	6/7/04-7/29/04
020 TR	8:10 pm-9:50 pm	6/7/04-7/29/04
025 MW	6:10 pm-7:50 pm	6/7/04-7/29/04

ESL075	Conversation VI	Credits: 2
010 MW	8:45 am-10:25 am	6/7/04-7/29/04
020 MW	8:00 pm-9:40 pm	6/7/04-7/29/04
025 TR	6:10 pm-7:50 pm	6/7/04-7/29/04

ESL 087	ESL Advanced Vocabulary II	Credits: 2	Fees: \$20
010 MW	1:10 pm-2:50 pm	6/7/04-7/29/04	
020 MW	6:10 pm-7:50 pm	6/7/04-7/29/04	

ESL 079	TOEFL Preparation	Credits: 1	Fees: \$20
© 219 self-study course in ESL Language Lab			
6/7/04-7/29/04			

Orientation required: Contact 847.925.6227 during office hours for information.

## ESL Part-time Academic Program

These courses are only available to students enrolled in Spring 2004 ESL courses. New ESL students are not eligible to enroll in the courses listed below.

ESL 057	ESL Reading IV	Credits: 4
011 MW	1:15 pm-4:00 pm	5/24/04-7/29/04
021 TR	6:30 pm-9:20 pm	5/24/04-7/29/04

ESL 073	ESL Reading V	Credits: 4
011 MW	1:15 pm-4:00 pm	5/24/04-7/29/04
021 TR	6:30 pm-9:20 pm	5/24/04-7/29/04

ESL 067	ESL Writing IV	Credits: 4
011 TR	12:50 pm-3:40 pm	5/24/04-7/29/04
021 MW	6:30 pm-9:20 pm	5/24/04-7/29/04

ESL 074	ESL Writing V	Credits: 4
011 TR	12:50 pm-3:40 pm	5/24/04-7/29/04
021 MW	6:30 pm-9:20 pm	5/24/04-7/29/04

©=open entry

# Adult Educational Development

The Adult Educational Development (AED) Department offers Basic Skills, Pre-GED, GED, Citizenship Training, Employment Skills and Special Topics courses for persons who are over 16 years of age and who are not currently enrolled in high school. The department offers the Nonnative Literacy Program for persons whose first language is not English. Online classes are available at the GED level. Student placement, achievement, GED predictive and career interest testing and other advising services are also available. Classes are offered free of charge or for a low fee through support of federal and state grant funds.

The GED Testing Program is intended primarily for adults 19 years of age or older; however, students 17 and 18 years of age may test if they meet other eligibility requirements.

Students may register for Basic Skills, Pre-GED, GED, Citizenship and Employment classes at Harper's main campus or the Harper Northeast Center. Registration for Nonnative Literacy classes will be held only at the off-campus location where classes are taught: the Harper Northeast Center, Police Neighborhood Resource Center or the Northeast Palatine Community Center.

All Adult Educational Development classes are open entry; open enrollment is generally allowed until the fifth week in all classes if space is available. For more information, call 847.925.6223 or call the Northeast Center in Prospect Heights, 847.925.6015.

## Registration

Harper Campus  
Academic Resource Center, F338  
Call for appointment, 847.925.6223

**Harper Northeast Center**  
1375 S. Wolf Rd., Prospect Heights  
Call for appointment, 847.925.6015

## Nonnative Literacy Program

This program is for individuals who have nine years of education or less and who are native speakers of another language. Classes include basic English reading, writing and conversation for everyday practical use.

### Nonnative Literacy I

### Nonnative Literacy II

### Nonnative Literacy III

### Nonnative Literacy IV

Computer labs are available at the Northeast Center, the Police Neighborhood Resource Center and the Northeast Palatine Community Center.

Some sections of the four courses will be offered at the following times and locations.

**Harper Northeast Center**  
1375 S. Wolf Rd., Prospect Heights  
847.925.6015

Daytime	
Monday and Wednesday	9:30-11:10 am 6/7/04-7/28/04
Tuesday and Thursday	9:30-11:10 am 6/8/04-7/29/04

Evening	
Monday and Wednesday	5:30-7:10 pm 6/7/04-7/28/04
Tuesday and Thursday	5:30-7:10 pm 6/8/04-7/29/04
Monday and Wednesday	7:30-9:10 pm 6/7/04-7/28/04
Tuesday and Thursday	7:30-9:10 pm 6/8/04-7/29/04

**Police Neighborhood Resource Center**  
2272 Algonquin Parkway, Rolling Meadows  
847.506.2058

Daytime	
Monday and Wednesday	7:30-9:10 am 6/7/04-7/28/04
Tuesday and Thursday	9:30-11:10 am 6/8/04-7/29/04
Tuesday and Thursday	9:30-11:10 am 6/8/04-7/29/04

Evening	
Monday and Wednesday	5:30-7:10 pm 6/7/04-7/28/04
Tuesday and Thursday	5:30-7:10 pm 6/8/04-7/29/04
Tuesday and Thursday	7:30-9:10 pm 6/8/04-7/29/04

**Northeast Palatine Community Center**  
1585 N. Rand Road, Palatine

Daytime	
Monday and Wednesday	7:30-9:10 am 6/7/04-7/28/04
Tuesday and Thursday	9:30-11:10 am 6/8/04-7/29/04
Tuesday and Thursday	9:00-11:00 am 6/8/04-7/29/04

Evening	
Monday and Wednesday	5:30-7:10 pm 6/7/04-7/28/04
Tuesday and Thursday	5:30-7:10 pm 6/8/04-7/29/04
Tuesday and Thursday	7:10-9:10 pm 6/8/04-7/29/04
Tuesday and Thursday	8:00-10:00 pm 6/8/04-7/29/04
Tuesday and Thursday	4:00-6:00 pm 6/8/04-7/29/04
Tuesday and Thursday	5:30-7:10 pm 6/8/04-7/29/04
Tuesday and Thursday	7:30-9:10 pm 6/8/04-7/29/04

## Basic Skills Program

For adults who need to gain basic skills in reading, writing or arithmetic.

### Basic Reading Skills

Introduces basic word recognition and word attack skills including prereading skills, sight words, phonics skills and structural analysis skills. The program includes comprehension and advanced reading skills in relation to words, sentences, selections and sequence, as well as specialized skills in locating and organizing information, reading maps, interpreting graphs, tables or diagrams and developing personal reading skills. Introduces skills of application, analysis and evaluation of reading materials. Prepares the student for Pre-GED Reading Skills.

Daytime	
Thursday	8:30 am-12:00 pm 6/10/04-7/29/04

Evening	
Wednesday	6:00-9:30 pm 6/9/04-7/28/04

### Off campus

Harper Northeast Center	
Daytime	Tuesday 8:30 am-12:00 pm 6/8/04-7/27/04

Evening	
Tuesday	6:00-9:30 pm 6/8/04-7/27/04

Northeast Palatine Community Center	
Daytime	Saturday 12:15-1:55 pm 6/12/04-7/31/04

**Evening**  
Wednesday 6/9/04-7/28/04  
6:00-9:30 pm

**Basic English Skills**  
Presents basic English grammar and usage, spelling, vocabulary, dictionary use, capitalization and punctuation. Develops skills in producing short, clear writing examples. Prepares the student for the Pre-GED English Skills.

**Daytime**  
Tuesday 6/8/04-7/27/04  
8:30 am-12:00 pm

**Evening**  
Monday 6/7/04-7/26/04  
6:00-9:30 pm

**Off campus**  
**Harper Northeast Center**  
**Daytime**  
Thursday 6/10/04-7/29/04  
8:30 am-12:00 pm

**Evening**  
Thursday 6/10/04-7/29/04  
6:00-9:30 pm

**Northeast Palatine Community Center**  
**Daytime**  
Saturday 6/12/04-7/31/04  
10:00 am-11:40 am

**Evening**  
Monday 6/7/04-7/26/04  
6:00-9:30 pm

**Basic Mathematical Skills**  
Introduces basic arithmetic skills including the fundamental operations with whole numbers, decimals, fractions and mixed numbers, verbal reasoning and measurement systems. Prepares the student for the Pre-GED Mathematics Skills.

**Daytime**  
Thursday 6/10/04-7/29/04  
8:30 am-12:00 pm

**Evening**  
Tuesday 6/8/04-7/27/04  
6:00-9:30 pm

**Off campus**  
**Harper Northeast Center**  
**Daytime**  
Wednesday 6/9/04-7/28/04  
8:30 am-12:00 pm

**Evening**  
Wednesday 6/9/04-7/28/04  
6:00-9:30 pm

**Northeast Palatine Community Center**  
**Daytime**  
Saturday 6/12/04-7/31/04  
8:10-9:50 am

**Evening**  
Tuesday 6/8/04-7/27/04  
6:00-9:30 pm

**Pre-GED Program**  
**For adults who need to improve skills before taking GED review classes.**

**Pre-GED Reading Skills**  
The course reinforces and reviews word recognition and word attack skills of structural analysis. Also covered are comprehension and advanced reading skills including deriving meaning from words, sentences, selections and identifying sequence; specialized reading skills including locating and organizing information, reading maps, and interpreting graphs, tables or diagrams; and personal reading skills. Introduces skills of application, analysis and evaluation. Prepares the student for the GED Social Studies and Science course.

**Daytime**  
Thursday 6/10/04-7/29/04  
8:30 am-12:00 pm

**Evening**  
Wednesday 6/9/04-7/28/04  
6:00-9:30 pm

**Off campus**  
**Harper Northeast Center**  
**Daytime**  
Tuesday 6/8/04-7/27/04  
8:30 am-12:00 pm

**Evening**  
Tuesday 6/8/04-7/27/04  
6:00-9:30 pm

**Northeast Palatine Community Center**  
**Daytime**  
Friday 6/11/04-7/30/04  
8:30 am-12:00 pm

**Evening**  
Saturday 6/12/04-7/31/04  
12:15-1:55 pm

**Evening**  
Wednesday 6/9/04-7/28/04  
6:00-9:30 pm

**Pre-GED English Skills**  
Reinforces basic English grammar and usage, spelling rules, vocabulary, dictionary use, capitalization, punctuation and sentence/paragraph development. Introduces skills of application, analysis and evaluation. Prepares students for GED Writing Skills and Literature.

**Daytime**  
Monday 6/7/04-7/26/04  
8:30 am-12:00 pm

**Evening**  
Monday 6/7/04-7/26/04  
6:00-9:30 pm

**Off campus**  
**Harper Northeast Center**  
**Daytime**  
Thursday 6/10/04-7/29/04  
8:30 am-12:00 pm

**Evening**  
Thursday 6/10/04-7/29/04  
6:00-9:30 pm

**Northeast Palatine Community Center**  
**Daytime**  
Monday 6/7/04-7/26/04  
8:30 am-12:00 pm

**Evening**  
Thursday 6/10/04-7/29/04  
6:00-9:30 pm

**Northeast Palatine Community Center**  
**Daytime**  
Monday 6/7/04-7/26/04  
8:30 am-12:00 pm

**Evening**  
Saturday 6/12/04-7/31/04  
10:00-11:40 am

**Evening**  
Monday 6/7/04-7/26/04  
6:00-9:30 pm

**Pre-GED Mathematical Skills**  
Reinforces arithmetic skills including the fundamental operations with decimals, fractions, mixed numbers, verbal reasoning and measurement systems. Introduces percents, ratio and proportion and charts and graphs. Introduces comprehension, application, analysis and evaluation levels of cognitive skills. Prepares the student for GED Mathematics course.

**Daytime**  
Tuesday 6/8/04-7/27/04  
8:30 am-12:00 pm

**Evening**  
Tuesday 6/8/04-7/27/04  
6:00-9:30 pm

**Off campus**  
**Harper Northeast Center**  
**Daytime**  
Wednesday 6/9/04-7/28/04  
8:30 am-12:00 pm

**Evening**  
Wednesday 6/9/04-7/28/04  
6:00-9:30 pm

**Northeast Palatine Community Center**  
**Daytime**  
Saturday 6/12/04-7/31/04  
10:00-11:40 am

**Evening**  
Monday 6/7/04-7/26/04  
6:00-9:30 pm

**Northeast Palatine Community Center**  
**Daytime**  
Wednesday 6/9/04-7/28/04  
8:30 am-12:00 pm

**Evening**  
Saturday 6/12/04-7/31/04  
8:10-9:50 am

**Evening**  
Tuesday 6/8/04-7/27/04  
6:00-9:30 pm

**GED Program**  
**Review classes for adults preparing to take the GED (High School Equivalency Test)**

**GED Social Studies and Science**  
Reviews specific social studies, science and U.S./Illinois Constitution content and skills. Emphasis is on review of comprehension, application, analysis and evaluation levels of cognitive skills. Prepares the student for the GED Social Studies, Science and U.S./Illinois Constitution Tests.

**Daytime**  
Thursday 6/10/04-7/29/04  
8:30 am-12:00 pm

**Evening**  
Wednesday 6/9/04-7/28/04  
6:00-9:30 pm

**Off campus**  
**Harper Northeast Center**  
**Evening**  
Tuesday 6/8/04-7/27/04  
6:00-9:30 pm

**Northeast Palatine Community Center**  
**Daytime**  
Saturday 6/12/04-7/31/04  
12:15-1:55 pm

**Evening**  
Wednesday 6/9/04-7/28/04  
6:00-9:30 pm

**GED Writing Skills and Literature**  
Reviews basic grammar and usage, sentence structure, style, logic and paragraph organization, punctuation, capitalization and spelling. Students produce writing samples that require them to take a position and defend it with appropriate evidence, detail and argumentative strategies. Prepares the student for the GED Writing Skills Test. Reviews literary types, terms, techniques, interpretation and commentary to prepare the student for the GED Interpreting Literature and the Arts Test.

**Daytime**  
Wednesday 6/9/04-7/28/04  
8:30 am-12:00 pm

**Evening**  
Monday 6/7/04-7/26/04  
6:00-9:30 pm

**Off campus**  
**Harper Northeast Center**  
**Evening**  
Thursday 6/10/04-7/29/04  
6:00-9:30 pm

**Northeast Palatine Community Center**  
**Daytime**  
Saturday 6/12/04-7/31/04  
10:00-11:40 am

**Evening**  
Monday 6/7/04-7/26/04  
6:00-9:30 pm

**Special Topics Program**  
**Topics in Adult Educational Development/Basic**  
Studies selected problems or topics in Adult Educational Development (AED) at the basic level. The exact content and instructional methodology will vary semester to semester depending on the material to be studied.

**Harper Northeast Center**  
**Daytime**  
Thursday 6/10/04-7/29/04  
6:00-9:30 pm

**Northeast Palatine Community Center**  
**Daytime**  
Saturday 6/12/04-7/31/04  
10:00-11:40 am

**Evening**  
Monday 6/7/04-7/26/04  
6:00-9:30 pm

**GED Mathematics**  
Reviews arithmetic skills including decimals, fractions, mixed numbers, verbal reasoning, measurement, percents, ratio and proportion and charts and graphs. Introduces algebra and geometry concepts and multi-step problem solving using formulas and numeration statistics. Emphasizes review of comprehension, application, analysis and evaluation levels of cognitive skills. Prepares the student for the GED Mathematics Test.

**Daytime**  
Monday 6/7/04-7/26/04  
8:30 am-12:00 pm

**Evening**  
Tuesday 6/8/04-7/27/04  
6:00-9:30 pm

**Off campus**  
**Harper Northeast Center**  
**Evening**  
Wednesday 6/9/04-7/28/04  
6:00-9:30 pm

**Northeast Palatine Community Center**  
**Daytime**  
Saturday 6/12/04-7/31/04  
8:10-9:50 am

**Evening**  
Tuesday 6/8/04-7/27/04  
6:00-9:30 pm

**Online GED Preparation**  
Instruction in GED social studies and science, writing skills and literature, and mathematics is available through online classes as an alternative to traditional classes.

**Citizenship Program**  
**Citizenship Training**  
Prepares applicants for naturalization for the citizenship tests and interview. Call 847.925.6223 for enrollment information.

**Evening**  
Monday 6/7/04-7/26/04  
6:00-9:30 pm

**Off campus**  
**Northeast Palatine Community Center**  
**Daytime**  
Saturday 6/12/04-7/31/04  
8:30 am-12:00 pm

**Employment Skills Program**  
**Adult Employment Skills/Basic**  
Acquaints the Nonnative Literacy, Basic Skills and Pre-GED (General Educational Development) student with the American workplace. Explores the world of work and current issues and trends that affect employability. Integrates and compares students' work experiences in American and nonnative work cultures. Introduces topics such as job/career assessment, individual education/employment plans, employment/life skills, job search skills, employment documents, interviewing skills, employment practices and personnel programs, job retention skills and job departure. Personal biographies are used for needs assessments.

**Police Neighborhood Resource Center**  
**Daytime**  
Friday 6/11/04-7/2/04  
9:30 am-1:00 pm  
7/9/04-7/30/04

**Special Topics Program**  
**Topics in Adult Educational Development/Basic**  
Studies selected problems or topics in Adult Educational Development (AED) at the basic level. The exact content and instructional methodology will vary semester to semester depending on the material to be studied.

**Topics in Adult Educational Development**  
Studies selected problems or topics in Adult Educational Development (AED). The exact content and instructional methodology will vary semester to semester depending on the material to be studied. A syllabus or course outline containing additional information will be available with registration materials each time that the course is offered.

**Daytime**  
Friday 6/11/04-7/2/04  
9:30 am-1:00 pm

**Evening**  
Monday 6/7/04-7/26/04  
6:00-9:30 pm

**Off campus**  
**Harper Northeast Center**  
**Daytime**  
Thursday 6/10/04-7/29/04  
6:00-9:30 pm

**Northeast Palatine Community Center**  
**Daytime**  
Saturday 6/12/04-7/31/04  
10:00-11:40 am

**Evening**  
Monday 6/7/04-7/26/04  
6:00-9:30 pm

**Pre-GED Program**  
**For adults who need to improve skills before taking GED review classes.**

**Pre-GED Reading Skills**  
The course reinforces and reviews word recognition and word attack skills of structural analysis. Also covered are comprehension and advanced reading skills including deriving meaning from words, sentences, selections and identifying sequence; specialized reading skills including locating and organizing information, reading maps, and interpreting graphs, tables or diagrams; and personal reading skills. Introduces skills of application, analysis and evaluation. Prepares the student for the GED Social Studies and Science course.

**Daytime**  
Thursday 6/10/04-7/29/04  
8:30 am-12:00 pm

**Evening**  
Tuesday 6/8/04-7/27/04  
6:00-9:30 pm

**Northeast Palatine Community Center**  
**Daytime**  
Saturday 6/12/04-7/31/04  
10:00-11:40 am

**Evening**  
Monday 6/7/04-7/26/04  
6:00-9:30 pm

**Academic Advising and Counseling****For New Students:**

- General information
- Orientation, part-time and full-time
- Special "returning adult" advising sessions

**Center for New Students & Orientation**

Building C, Room C104  
847.925.6208  
8 a.m.-8 p.m. M-W  
8 a.m.-4:30 p.m. R-F

**Summer**

8 a.m.-8 p.m. M-W  
8 a.m.-4:30 p.m. R

**For Current or Previous Students:**

- General, transfer and career program information
- Students in academic difficulty

**Spring****Academic Advising and Counseling Center**

Building I, Room I117  
847.925.6393  
8 a.m.-8 p.m. M-W  
8 a.m.-4:30 p.m. R-F  
By appointment

**Career Center**

Building A, Room A347  
847.925.6220  
8:30 a.m.-8 p.m. M-W  
8:30 a.m.-4:30 p.m. R-F  
By appointment

**Center for Multicultural Learning**

Building D, Room D142  
847.925.6522  
8 a.m.-4:30 p.m. M-T, R-F  
8 a.m.-8 p.m. W  
By appointment

**Summer****Academic Advising and Counseling Center**

Building I, Room I117  
847.925.6393  
8 a.m.-8 p.m. M-W  
8 a.m.-4:30 p.m. R  
By appointment

**GED Support**

- GED test preparation

**Adult Educational Development**

Building F, Room F338  
847.925.6223  
8 a.m.-8:30 p.m. M-W  
8 a.m.-4:30 p.m. R-F

**Summer**

8 a.m.-8:30 p.m. M-W  
8 a.m.-4:30 p.m. R

**Adult Educational Development**

Northeast Center  
1375 S. Wolf Road, Prospect Heights  
847.925.6015  
9 a.m.-9 p.m. M-R  
9 a.m.-4:30 p.m. F

**Summer**

9 a.m.-9 p.m. M-R

**Admissions Outreach**

- General information
- Applications for admission
- Campus tours/Open house
- Limited Enrollment Program information

**Admissions Office**

Building C, Room C102  
847.925.6506  
8 a.m.-8 p.m. M-R  
8 a.m.-4:30 p.m. F  
9 a.m.-noon A

**Summer**

8 a.m.-8 p.m. M-R

**Books and Supplies**

- Textbooks, laboratory manuals and supplies
- Buy books online at harpercollege.edu
- Book buyback plan each semester

**Bookstore**

Building L, Room L260  
847.925.6275  
7:45 a.m.-7 p.m. M-R  
7:45 a.m.-4:30 p.m. F  
9 a.m.-noon A (when College is in session)

**Summer**

7:45 a.m.-6:30 p.m. M-R  
Extended hours the first two weeks of class. Closed June 30-July 25.

**Career Counseling****For Enrolled Students:**

- Academic/career counseling
- Career interest testing and resources
- Job search assistance and Internet-based job listings

**For Community Residents:**

- Individual career counseling
- Career management workshops
- Free career library and job listings

**Career Center**

Building A, Room A347  
847.925.6220 for enrolled students  
847.925.6293 for community residents  
8:30 a.m.-8 p.m. M-W  
8:30 a.m.-4:30 p.m. R-F

**Summer**

8:30 a.m.-8 p.m. M-T  
8:30 a.m.-4:30 p.m. W-R

**Child Care****Preschool (Two Locations)**

- For children of students, staff, faculty and the community-at-large.
- Ages 3 to 5 years
- Four and eight week sessions available. Call for information.

Building I, Room I123  
847.925.6262

Northeast Center, 1375 S. Wolf Road  
Prospect Heights IL, 60070  
847.925.6010

**Child Care (One Location)**

- Full-day and half-day child care
- Hours can be scheduled to meet your needs
- Ages 3 to 5 years
- Monday through Friday  
7:30 a.m.-5:30 p.m.

Building I, Room I123  
847.925.6262

**Computer/Internet Access**

- Internet access available in I223 and D131a as well as the Library.

**Computer Labs**

- PC/Internet
- Macintosh
- AutoCAD

**Computer Graphics/AutoCad Lab**

Building H, Rooms H210 and H221  
847.925.6000, ext. 2925  
Times as posted

**Cyber Cafe**

Building A  
Student Center Lounge

**Mega Lab**

Building I, Room I223  
847.925.6000, ext. 2372  
6:45 a.m.-11 p.m. M-F  
8 a.m.-6 p.m. A-S

**Summer**

7 a.m.-10:30 p.m. M-R

**PC Lab**

Building D, Room D131  
847.925.6000, ext. 2669  
8 a.m.-10 p.m. M-F  
8 a.m.-5 p.m. A

**Summer**

9 a.m.-9 p.m. M-R

**William's Web**

Building L (across from Bookstore)

**Disability Services**

- Support services for Deaf/hard of hearing, learning disabled, head injured, orthopedically impaired, visually impaired
- Instructional support and accommodations
- Assistive technology
- Campus access (students and public)
- PASS—a fee-based tutoring program for LD and ADD students
- Interpreters for Deaf/hard of hearing
- To request services, students seeking accommodation must call 847.925.6266 (voice) or 847.397.7600 (TTY for Deaf/hard of hearing callers) to schedule an appointment or for information on specific requirements. Call at least one month in advance.

**Access and Disability Services**

Building D, Room D119  
847.925.6266  
8 a.m.-4:30 p.m. M-F

**Summer**

8 a.m.-4:30 p.m. M-R

**Events and Activities**

- Events (open to the public)
- Clubs and organizations
- Movies, live music, poetry and comedy performances
- Recreational programs/events
- Student awards
- *The Harbinger* campus newspaper
- Harper WHCM radio station

**Student Activities**

Building A, Room A336  
847.925.6242  
8 a.m.-4:30 p.m. M-F

**Summer**

8 a.m.-4:30 p.m. M-R

- Ticket information for concerts, performances and other campus events

**Box Office, J135**

847.925.6100  
24-hour hotline: 847.925.6552  
10 a.m.-7 p.m. M-R  
10 a.m.-4:30 p.m. F  
(when College is in session)

**Summer**

10 a.m.-7 p.m. M-R

**Financial Aid**

- Scholarships, grants, loans
- Military educational benefits
- Employment opportunities on campus

**Scholarships and Financial Assistance**

Building C, Room C102  
847.925.6248  
8 a.m.-8 p.m. M-R  
8 a.m.-4:30 p.m. F  
9 a.m.-noon A

**Summer**

9 a.m.-8 p.m. M-R

**Health Resources**

- Pool, gym, weight room, racquetball, Nautilus, Fitness Center
- Aerobics and other physical activity classes

**Wellness and Human Performance**

Wellness and Sports Center, Room M219  
847.925.6466  
Call for membership options and hours of operation.

- Medical care and health screening
- Health education, information and counseling
- Psychological services, including wellness and counseling (available only when classes are in session)

**Health and Psychological Services**

Building A, Room A362  
847.925.6268  
8 a.m.-6 p.m. M-R  
8 a.m.-4:30 p.m. F  
(when College is in session)  
8 a.m.-4:30 p.m. M-F (between sessions)

**Summer**

8 a.m.-6 p.m. M-R  
(Hours may differ during vacation periods.)

**International Students**

- Advising
- F-1 Visa (I-20)

**ESL/International Student Office**

Building F, Room F340  
847.925.6226  
8 a.m.-8 p.m. M-T  
8 a.m.-4:30 p.m. W-F

**Summer**

8 a.m.-8 p.m. M-T  
8 a.m.-4:30 p.m. W-R

**Library**

Building F  
847.925.6584  
7:30 a.m.-10 p.m. M-R  
7:30 a.m.-4:30 p.m. F  
9 a.m.-3:30 p.m. A  
1 p.m.-5 p.m. S  
(when College is in session)

7:30 a.m.-4:30 p.m. M-F (between sessions)

**Summer**

7:30 a.m.-10 p.m. M-R

**Center for Multicultural Learning****Multicultural Learning:**

- Multicultural awareness programming
- Academic advising for currently and previously enrolled students (available in Building I, Room I117 during the summer)
- Crisis intervention
- Transfer information center
  - Excursions to four-year schools
  - Individual advising by four-year school representatives
  - Assistance with transfer process
- Outreach and recruitment activities for underrepresented racial/ethnic groups
- Minority student retention programming
- Minority designated financial assistance information
- Bilingual (Spanish) services
- Study Abroad program information

**Center for Multicultural Learning**

Building D, Room D142  
847.925.6522  
8 a.m.-4:30 p.m. M-T, R-F  
8 a.m.-8 p.m. W

**Summer**

8 a.m.-4:30 p.m. M-R

**Registration**

- Academic and transcript records
- Chargeback/Joint Agreement/Out of district information
- Register/add/drop classes

**Registrar's Office**

Building A, Room A213  
847.925.6500  
8 a.m.-8 p.m. M-R  
8 a.m.-4:30 p.m. F  
9 a.m.-noon A

For hours during a non-registration period, contact the Registrar's office, 847.925.6500.

**Summer**

8 a.m.-6 p.m. M-R

**Student Center/Coffee Bar**

- Coffee and pastry bar
- Big screen TV and grand piano
- Study and social areas
- Cyber Cafe with open Internet and e-mail access

Building A  
Student Center Lounge  
Open while classes are in session

**Success Services**

- How to Study course—college learning skills
- Test performance and learning style inventories
- Reduce test anxiety
- Memory improvement/concentration skills

**Academic Enrichment**

Building F, Room F332  
847.925.6715  
7 a.m.-9 p.m. M,T,R  
7 a.m.-4 p.m. W,F  
8 a.m.-noon A

**Summer**

By appointment only

**Testing**

- Assessment testing in reading, writing and math
- CLEP, AP, Proficiency, ACT and GED testing information
- Flex-Ed® testing

**Assessment and Testing Center**

Building A, Room A148  
847.925.6541  
8:30 a.m.-8 p.m. M-R  
9 a.m.-4 p.m. F  
9 a.m.-noon A

**Summer**

8:30 a.m.-8 p.m. M-R

**ESL Testing**

Building F, Room F340

**Transportation**

- Available from several communities to Harper

**Pace Bus Company**

847.364.7223

**Tutoring**

- Harper students (free)
- Community tutoring (fee-based)

**Tutoring Center**

Building F, Room F315  
847.925.6539  
8:30 a.m.-7 p.m. M-R  
8:30 a.m.-4:30 p.m. F  
10 a.m.-2 p.m. A

Times for individual course tutoring will vary.

**Summer**

Office hours: 9:30 a.m.-7 p.m. M-R  
(Tutoring hours vary)

**Women's Program**

- Grant-supported tuition options
- Displaced homemaker and single parent services
- Academic/career counseling
- Non-traditional career information
- Personal support

**Women's Program**

Building A, Room A347  
847.925.6558  
8 a.m.-4:30 p.m. M-F  
Evening hours by appointment

**Summer**

8 a.m.-4:30 p.m. M-R  
Evening hours by appointment

**The Writing Center**

- Computer lab with hardware/software available
- Creative, supportive academic environment
- Professional writing specialists help organize and edit

Building F, Room F303  
847.925.2719  
8 a.m.-8 p.m. M-R  
8 a.m.-2 p.m. F

**Summer**

9 a.m.-7 p.m. M-R

**ESL Tutoring**

Building F, Room F342

Student Service Offices may have altered schedules the week of spring break and during the summer session. Because office hours may vary, it is recommended that you call ahead.

## What's New at Harper

With an eye to current and future career trends, new programs continually emerge at Harper College. Here's a sample of what's coming in fall 2004. For more information about the programs, call 847.925.6707.

**Fall 2004****New programs in health care, the green industry and graphic design:****Diagnostic Medical Sonography**

Associate in Applied Science Degree\*  
Diagnostic Medical Sonography Certificate\*  
Vascular Technologist Certificate\*

**Cardiographic Technician Certificate****Diagnostic Cardiac Sonography Certificate****Echocardiography Certificate****Radiologic Technology**

Associate in Applied Science Degree\*

**Graphic Arts**

Associate in Applied Science Degree\*  
Graphic Arts Certificate  
Graphic Arts Design Certificate\*  
Graphic Arts Desktop Publishing Certificate

**Turfgrass and Grounds Maintenance Certificate**

\*Pending Illinois Community College Board and Illinois Board of Higher Education approval.

**Grand Opening Fall 2004  
Science, Emerging Technology  
and Health Careers Center**

On November 7, 2000, voters in Chicago's northwest suburbs overwhelmingly approved a referendum to build an \$88.8 million state-of-the-art learning center for Harper College's nationally acclaimed programs in health, science and computer technology.

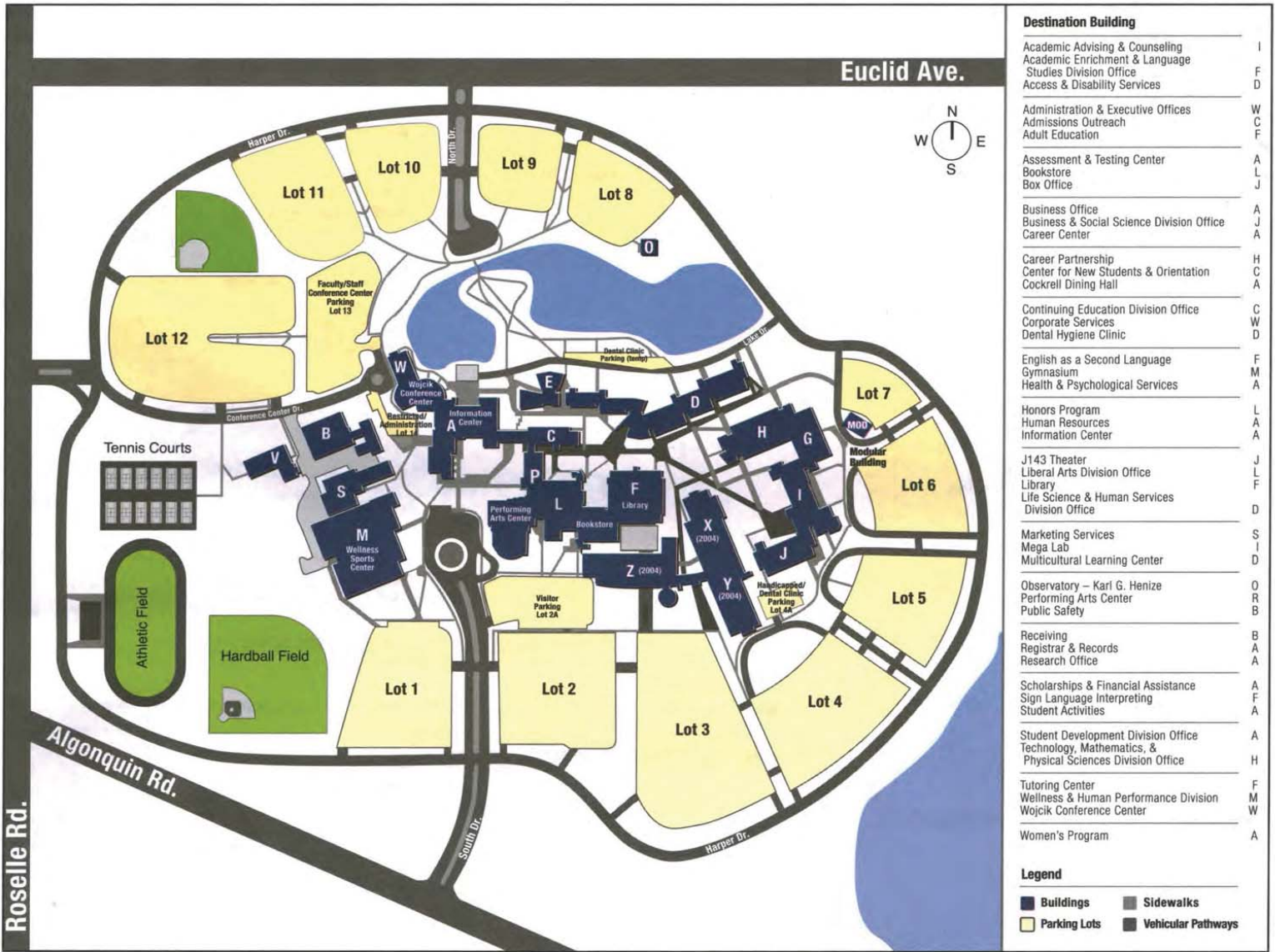
The Science, Emerging Technology and Health Careers Center will house 10 major academic programs including nursing, dental hygiene, medical imaging, cardiac care, electronics, computer sciences, physics, biology and chemistry.

**Statistics**

- 288,500 square feet
- 27 classrooms
- 9 lecture halls
- 38 laboratories including a full-service, comprehensive computer laboratory
- Full-scale nursing laboratories and a working dental clinic

**Watch for more information about the Grand Opening ceremonies and activities as it becomes available.**

# Campus Map



Destination Building	
Academic Advising & Counseling	I
Academic Enrichment & Language	F
Studies Division Office	D
Access & Disability Services	
Administration & Executive Offices	W
Admissions Outreach	C
Adult Education	F
Assessment & Testing Center	A
Bookstore	L
Box Office	J
Business Office	A
Business & Social Science Division Office	J
Career Center	A
Career Partnership	H
Center for New Students & Orientation	C
Cockrell Dining Hall	A
Continuing Education Division Office	C
Corporate Services	W
Dental Hygiene Clinic	D
English as a Second Language	F
Gymnasium	M
Health & Psychological Services	A
Honors Program	L
Human Resources	A
Information Center	A
J143 Theater	J
Liberal Arts Division Office	L
Library	F
Life Science & Human Services	D
Division Office	
Marketing Services	S
Mega Lab	I
Multicultural Learning Center	D
Observatory - Karl G. Henze	O
Performing Arts Center	R
Public Safety	B
Receiving	B
Registrar & Records	A
Research Office	A
Scholarships & Financial Assistance	A
Sign Language Interpreting	F
Student Activities	A
Student Development Division Office	A
Technology, Mathematics, &	
Physical Sciences Division Office	H
Tutoring Center	F
Wellness & Human Performance Division	M
Wojcik Conference Center	W
Women's Program	A

## Extension Sites

For more information, contact the Extension Information Center, **847.925.6001**.

Harper, your community college, extends to every neighborhood of the district. More than 100 credit and 550 continuing education classes are offered at our many extension sites each semester. Chances are that you live only minutes from an extension site rich in learning options.

Whether you are looking for credit classes, computer training, career assessment, professional development or personal enrichment, you will find that Harper extension sites have the courses you want.

● CREDIT ★ CONTINUING EDUCATION

**1. Barrington High School - BHS ● ★**  
 616 West Main Street  
 Barrington, Illinois 60010

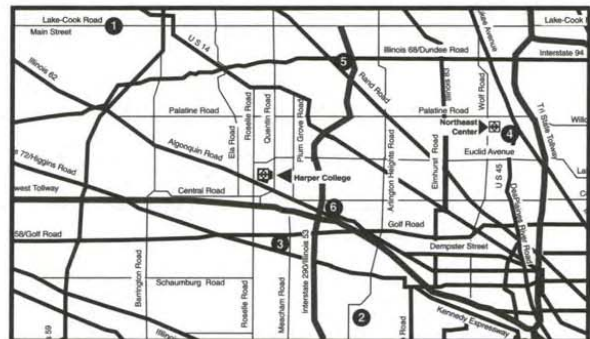
**3. Harper Professional Center - HPC ★**  
 650 East Higgins Road  
 Schaumburg, Illinois 60173

**5. Northeast Palatine Community Center - NPCC ●**  
 1585 Rand Road  
 Palatine, Illinois 60067

**6. Police Neighborhood Resource Center - PNRC ●**  
 2275 West Algonquin Parkway  
 Rolling Meadows, Illinois 60008

**2. Elk Grove High School - EGHS ● ★**  
 600 West Elk Grove Boulevard  
 Elk Grove Village, Illinois 60007

**4. Northeast Center - NEC ● ★**  
 1375 South Wolf Road  
 Prospect Heights, Illinois 60070



2004  
**Harper**  
**College**  
 harpercollege.edu

## Academic Calendar

**Honors Convocation/  
 Commencement**  
 May 21

**Registration Continues**  
 Through June 5

**Classes Begin**  
 June 7

**Midterm**  
 July 1

**Final Exams**  
 July 28-29

**Call the J Theatre Box Office  
 for more information about  
 events, concerts and theater  
 offerings: 847.925.6100**

## Art Exhibits

**National Small Works**  
 March 29-April 21  
 Art Exhibition Space  
 Building C, Room C200

**Harper Student Exhibit**  
 May 3-May 19  
 Art Exhibition Space  
 Building C, Room C200

## Events

**Wellness Week**  
 April 20-22

**Health Fair**  
 April 21, 9:00 a.m.-1:00 p.m.  
 Building A  
 847.925.6268

**Drive-In Movies FREE Family Fun!**

June 16  
**The Wizard of Oz**  
 8:45 p.m. Parking Lot 10

July 8  
**Willy Wonka and the  
 Chocolate Factory**  
 8:45 p.m. Parking Lot 10

July 20  
**Finding Nemo**  
 8:45 p.m. Parking Lot 10

**The Jesse White Tumbling Team**  
 June 23, 5:00 p.m.

**33rd Annual  
 Outdoor Dinner/Jazz Concert**  
 June 24  
 6:00 p.m., Dinner  
 7:00 p.m., Concert  
 Building A, South Patio

**The Spencers, Magic and Illusion**  
 June 29  
 2:00 p.m. and 6:00 p.m.  
 Performing Arts Center

**Excursions  
 Ghost Hunting Chicago-Style**  
 Tour with authors  
 Ursula Bielski and David Cowan  
 July 9, 3:00-11:30 p.m.

**Springfield: A Capitol Idea**  
 Day trip to Illinois' political history  
 July 23, 7:30 a.m.-11:00 p.m.

## Concerts

All concerts are performed in the  
 Performing Arts Center.

**Harper Symphony Orchestra**  
 April 3 7:30 p.m.

**Kevin Wood, Trumpet**  
 April 7 7:30 p.m.

**Harper Spotlight Singers**  
 April 8 12:15 p.m.

**Rose Sperazza, Clarinet  
 Collin Anderson, Bassoonist**  
 April 14 7:30 p.m.

**Scott Tennant, Guitar**  
 April 21 7:30 p.m.

**Harper Festival Chorus**  
 May 2 3:00 p.m.

**Harper Guitar Ensemble**  
 May 4 7:30 p.m.

**Harper Jazz Band and  
 Jazz Combos**  
 May 5 7:30 p.m.

**Harper Choir, Camareta Singers  
 and Spotlight Singers**  
 May 7 7:30 p.m.

**Harper Steel Band**  
 May 11 7:30 p.m.

**Harper Piano Ensemble**  
 May 12 7:30 p.m.

**Harper Wind Symphony and  
 Chamber Winds**  
 May 13 7:30 p.m.

**Harper Symphony Orchestra**  
 May 15 7:30 p.m.

**Harper Commencement  
 Festival Band**  
 May 21 7:00 p.m.  
 Wellness and Sports Center  
 Lower Level

**Harper Symphony Orchestra**  
 June 30 8:00 p.m.



Harper College

1200 West Algonquin Road  
 Palatine, Illinois 60067-7398

**Periodicals  
 Postage Paid  
 Palatine, IL**

This is Harper College (USPS 668-870) is published by William Rainey Harper College, with 7 issues in January; 3 in February, March, April and July; 2 in May, June, October and November; 8 in August; 5 in September; and 6 in December. Periodicals postage paid at Palatine, IL.

**Residential Customer**