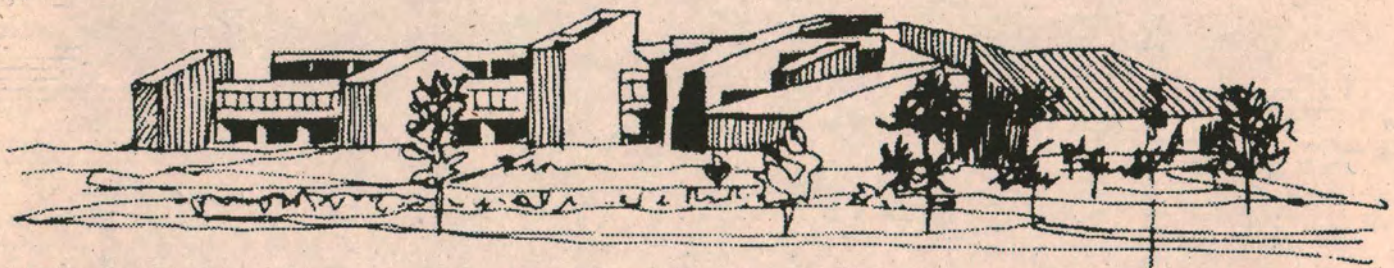


---

---

# Harper College 1994



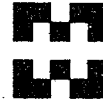
Profile

---

---

BT 13:14

# William Rainey Harper College



January, 1994

Dear Members of the Harper Community:

As a member of the Harper district, you may wish to learn more about the College and the Illinois community college system. The *Profile* is designed to acquaint you with Harper College, a major educational, cultural and social resource in the northwest area.

The student population is served by 218 faculty, 92 professional/technical, 272 classified, 39 supervisory/confidential, 78 custodial and maintenance and 36 administrative staff. A part-time faculty of 600 supplements our teaching staff. The College is governed by a Board of Trustees composed of seven members elected by the community and a student trustee elected by the students. Everyone at Harper is committed to providing quality instruction and services that respond to the needs of the residents of the district.

We hope that this publication will give you a good overview and that you will take advantage of the resources that Harper College provides.

Sincerely,

A handwritten signature in black ink, appearing to read "Paul N. Thompson". The signature is fluid and cursive, with a large initial 'P' and 'T'.

Paul N. Thompson  
President

# Profile of Harper College 1994

## Introductory Information

- I. State Community College System
- II. Maps
- III. Academic Programs
- IV. Students
- V. College Finances
- VI. Structure and Staff
- VII. Services and Facilities
- VIII. Auxiliary Organizations

# Harper Highlights

- William Rainey Harper College was founded on March 27, 1965. The College opened its doors to students in the fall of 1967.
- The College is named after Dr. William Rainey Harper, first president of the University of Chicago and known as the father of the two-year college.
- The College is governed by an elected board of trustees composed of seven members and a student trustee elected by the students.
- The College encompasses 23 communities with an area of about 200 square miles and a population of 516,000.
- The campus in Palatine has 17 buildings on a total area of 200 acres.
- The tuition rate is \$36.00 per credit hour.
- Fall enrollment is approximately 24,000 students.
- Approximately 30 percent of the annual high school graduates in the district who go on to college attend Harper.
- More than 350,000 different students have attended Harper since it was founded.
- Approximately 83 percent of the College faculty hold postgraduate degrees.
- The Harper College Learning Resources Center has 183,929 volumes including microforms and reprints, and about 831 periodical titles. The media collection of 126,537 items consists of videotapes, films, audiotapes, slides, filmstrips and other formats. **The library has a computerized, on-line catalog which can be accessed through strategically placed terminals on the first and second floors of the LRC.** Through on-line searching of a national data base, the LRC has access to academic institutions nationwide, as well as to those in Illinois.
- The College operates extension centers in Barrington, Buffalo Grove, Elk Grove, Hoffman Estates, Palatine and Prospect Heights. The Northeast Center in Prospect Heights is the largest of these centers.
- The College offers over 50 academic scholarships each year covering tuition and fees as well as various financial grants sponsored by individuals, organizations and companies in the area which range from \$100 to \$8,000.

# Introduction

William Rainey Harper College is a two-year public community college which was founded in 1965 and officially opened classes the fall of 1967. The College offers both the associate in arts and associate in science degrees as well as an associate in applied science degree in 60 career areas. In addition, there are more than 15 one-year certificate programs which prepare men and women of all ages for immediate employment. There are numerous other programs and services such as continuing education, the CAD and Manufacturing Center, business management seminars, cultural affairs, women's program, adult educational development, support services for students with disabilities and community counseling services.

The spirit of Harper College is reflected in its name. William Rainey Harper was a scholar, teacher, writer and administrator who devoted his life to the pursuit of excellence in education. As the first president of the University of Chicago, Dr. Harper initiated programs to bring education into the community for those who could not become resident students at a university. This concept was the basis for the establishment of the community college system in the United States and the eventual founding of William Rainey Harper College.

In 1967, Harper College opened with an enrollment of about 1,700 students. Today the College's enrollment stands at approximately 24,000 students of all ages participating in degree credit, continuing education, and extension courses at the Harper campus or at other locations throughout the district.

Harper College makes available degree credit and credit-free offerings at many off-campus locations, including high schools and public libraries.

The College has enrolled more than 350,000 students dating back to 1967 when the first classes were held. Many more area residents have come to the campus to attend forums, concerts, and cultural and athletic events.

For the many residents in the College community, Harper provides the opportunity for completing the first two years of a bachelor's degree, developing a career, learning new skills, retooling for career advancement or change, enriching the quality of one's life, or simply enjoying the discovery of new knowledge. In meeting the varied and changing educational needs of the community, Harper College continues to be a dynamic institution, a community college in the truest sense of the term.

## Mission Statement

William Rainey Harper College is a comprehensive community college dedicated to providing excellent education at a reasonable cost, promoting personal growth, enriching the community and meeting the needs of a changing world.

In the broad range of its offerings, Harper College will

- educate students to assume an active, productive and meaningful role in a free and changing society.
- provide students with the knowledge and experiences required to develop a system of values and the ability to contend with difficult moral choices.
- encourage student success.
- enrich the cultural and economic life of the community.
- lead in individual and community development.
- enable the students to recognize the interrelationships of life, education and work.

## Board of Trustees (1993-94)

Barbara Barton

Sarah Born

John E. Coste

Kris Howard

Richard C. Kolze

Lawrence Moats

Molly Norwood

Alfred Norris

Palatine

Arlington Heights

Schaumburg

Barrington

Palatine

Inverness

Rolling Meadows

Palatine

**State Community  
College System**

# Illinois Community Colleges\*

## The System

Although the first public junior college in Illinois was established in Joliet in 1901, the Illinois Public Junior College Act was not passed until 1965. The Act was an outgrowth of the 1964 Master Plan published by the Illinois Board of Higher Education. This legislation, with subsequent amendments, is the basis for the present system of public community college districts in Illinois.

There are currently 39 public community college districts comprised of 50 colleges and five branches. Of those 39 districts, 37 have locally elected boards of trustees, one (Chicago) has a locally appointed board of trustees, and one (East St. Louis) has a local board of trustees appointed by the Governor. Thirty-six of the districts have a single college. Three districts are multi-college, with Chicago having eight colleges, Illinois Eastern having four colleges, and Black Hawk having two colleges. With the exception of State Community College of East St. Louis, each district has tax levy authority to provide local support for district operations.

## The Mission and Scope

Community colleges have excellence as their principal focus in satisfying the educational needs of the individuals and communities they serve.

Focusing on individual needs requires extensive student and instructional support services designed to analyze individual levels of educational attainment and then to respond with appropriate counseling, placement and other types of special instructional assistance.

Focusing on community needs requires extensive cooperation with community agencies, organizations, businesses, industries, and educational institutions to identify the needs and address them in a manner which is both educationally and economically sound.

Once educational needs are identified, community colleges provide a broad range of educational programs and services to address them.

Accordingly, the following community college missions, together with their respective scopes which further delineate such missions, are identified.

- Provide Liberal Arts and Sciences Programs: Such programs shall be provided either to prepare students for transfer to four-year colleges and universities or to meet the personal educational goals of individuals throughout their lifetimes.
- Provide Occupational Programs: Such programs shall be vocational, technical, and semi-technical in nature and shall be for the purpose of providing job training, retraining, and/or upgrading of skills to meet both current and emerging local, regional, and state manpower needs.
- Provide Preparatory, Developmental, and Remedial Programs: Such programs shall include adult basic education, General Educational Development (GED), English as a Second Language, and any other instruction designed to prepare students for successful experiences in postsecondary education.
- Provide Public Service Programs: Such programs shall include community education activities of an instructional nature such as non-credit adult continuing education and hobby/leisure time activities and community service activities which may include workshops, seminars, forums, and enrichment activities.

\*Reprinted from general information published by the Illinois Community College Board.



## The Illinois Community College Board

The Illinois Community College Board consists of nine members appointed by the Governor and one student member selected by the recognized Student Advisory Committee. Board members are appointed at large for six-year terms. The Chairman of the Board is selected by the Governor. The statutory responsibilities of the Board are planning and coordinating the programs and activities of the public community colleges. All colleges are governed by local boards of trustees.

### Illinois Public Community Colleges

<b>College</b>	<b>District</b>	<b>Address</b>	<b>Telephone</b>
Belleville Area College Joseph Cipfl, President	522	2500 Carlyle Road Belleville, IL 62221-5899	618/235-2700
Black Hawk College Charles Laws, Acting President	503	6600 34th Avenue Moline, IL 61265-5899	309/796-1311
Black Hawk College-East Charles Warthen, Vice President		Routes 34 and 78, P.O. Box 489 Kewanee, IL 61443-0489	309/852-5671
City Colleges of Chicago Ronald Temple, Chancellor	508	226 West Jackson Blvd. Chicago, IL 60606-6998	312/641-0808
Daley College Don Smitz, Acting President		7500 South Pulaski Road Chicago, IL 60652-1299	312/735-3000
Kennedy-King College Harold Pates, President		6800 South Wentworth Avenue Chicago, IL 60621-3799	312/962-3200
Malcolm X College Zerrie Campbell, President		1900 West Van Buren Street Chicago, IL 60612-3197	312/942-3000
Olive-Harvey College Homer Franklin, President		10001 South Woodlawn Avenue Chicago, IL 60628-1696	312/568-3700
Truman College Wallace Appelson, President		1145 West Wilson Avenue Chicago, IL 60640-5691	312/878-1700
Washington College Wayne Watson, President		30 East Lake Street Chicago, IL 60601-2495	312/781-9430
Wright College Raymond LeFevour, President		3400 North Austin Avenue Chicago, IL 60634-4276	312/777-7900
Danville Area Community College Harry Braun, President	507	2000 East Main Street Danville, IL 61832-5199	217/443-1811
College of DuPage Harold McAninch, President	502	22nd & Lambert Road Glen Ellyn, IL 60137-6599	708/858-2800
Elgin Community College Paul Heath, President	509	1700 Spartan Drive Elgin, IL 60123-7193	708/697-1000
William Rainey Harper College Paul Thompson, President	512	1200 West Algonquin Road Palatine, IL 60067-7398	708/397-3000

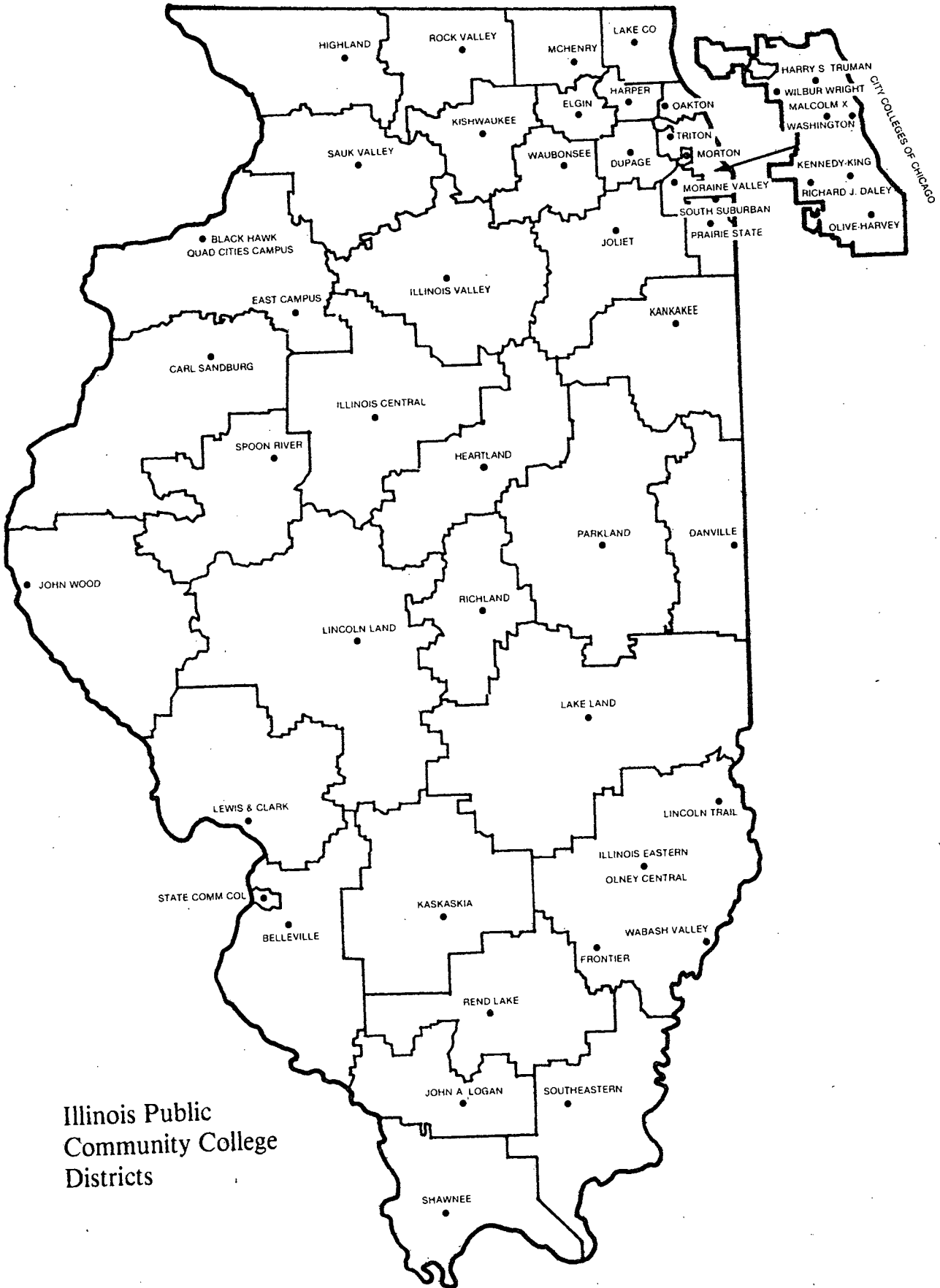
**Illinois Public Community Colleges (continued)**

<b>College</b>	<b>District</b>	<b>Address</b>	<b>Telephone</b>
Heartland Community College Jonathan Astroth	540	1226 Towanda Avenue Bloomington, IL 61701	309/827-0500
Highland Community College Ruth Mercedes Smith, President	519	2998 West Pearl City Road Freeport, IL 61032-9341	815/235-6121
Illinois Central College Thomas Thomas, President	514	One College Drive East Peoria, IL 61635-0001	309/694-5011
Illinois Eastern Community Colleges Harry Smith, Chancellor	529	233 East Chestnut Street Olney, IL 62450-2298	618/393-2982
Frontier Community College Richard Mason, President		Lot 2, Frontier Drive Fairfield, IL 62837-9701	618/842-3711
Lincoln Trail College Donald Donnay, President		R.R. 3 Robinson, IL 62454-9524	618/544-8657
Olney Central College Judith Hansen, President		105 North West Street Olney, IL 62450-1099	618/395-4351
Wabash Valley College Harry Benson, President		2200 College Drive Mt. Carmel, IL 62863-2699	618/262-8641
Illinois Valley Community College Alfred Wisgoski, President	513	2578 East 350th Road Oglesby, IL 61348-1099	815/224-2720
Joliet Junior College Raymond Pietak, President	525	1216 Houbolt Avenue Joliet, IL 60436-9352	815/729-9020
Kankakee Community College Larry Huffman, President	520	P.O. Box 888, River Road Kankakee, IL 60901-0888	815/933-0345
Kaskaskia College Raymond Woods, President	501	27210 College Road Centralia, IL 62801-9285	618/532-1981
Kishwaukee College Norman Jenkins, President	523	21193 Malta Road Malta, IL 60150-9506	815/825-2086
College of Lake County Daniel LaVista, President	532	19351 West Washington Street Grayslake, IL 60030-1198	708/223-6601
Lake Land College Robert Luther, President	517	5001 Lake Land Blvd. Mattoon, IL 61938-9366	217/235-3131
Lewis & Clark Community College Dale Chapman, President	536	5800 Godfrey Road Godfrey, IL 62035-2466	618/466-3411
Lincoln Land Community College Norman Stephens, President	526	Shepherd Road Springfield, IL 62794-9256	217/786-2200
John A. Logan College Ray Hancock, President	530	Route 2 Carterville, IL 62918-9599	618/985-3741
McHenry County College Robert Bartlett, President	528	8900 U.S. Highway 14 Crystal Lake, IL 60012-2796	815/455-3700

## Illinois Public Community Colleges (continued)

<b>College</b>	<b>District</b>	<b>Address</b>	<b>Telephone</b>
Moraine Valley Community College Vernon Crawley, President	524	10900 South 88th Avenue Palos Hills, IL 60465-0937	708/974-4300
Morton College Charles Ferro, President	527	3801 South Central Avenue Cicero, IL 60650-4398	708/656-8000
Oakton Community College Thomas TenHoeve, Jr., President	535	1600 East Golf Road Des Plaines, IL 60016-1258	708/635-1600
Parkland College Zelema Harris, President	505	2400 West Bradley Avenue Champaign, IL 61821-1899	217/351-2200
Prairie State College E. Timothy Lightfield, President	515	202 South Halsted Street Chicago Heights, IL 60411-1275	708/756-3110
Rend Lake College Mark Kern, President	521	Route 1 Ina, IL 62846-9740	618/437-5321
Richland Community College Charles R. Novak, President	537	One College Park Decatur, IL 62521-2188	217/875-7211
Rock Valley College Karl Jacobs, President	511	3301 North Mulford Road Rockford, IL 61111-5699	815/654-4250
Carl Sandburg College Donald Crist, President	518	2232 South Lake Storey Road Galesburg, IL 61401-9576	309/344-2518
Sauk Valley College Richard Behrendt, President	506	173 Illinois Route 2 Dixon, IL 61021-9110	815/288-5511
Shawnee College Jack D. Hill, President	531	Rural Route 1, Box 53 Ullin, IL 62992-9725	618/634-2242
South Suburban College Richard Fonte, President	510	15800 South State Street South Holland, IL 60473-1262	708/596-2000
Southeastern Illinois College Harry Abell, President	533	3575 College Road Harrisburg, IL 62946-9477	618/252-6376
Spoon River College Felix Haynes, President	534	Rural Route 1 Canton, IL 61520-9801	309/647-4645
State Community College	601	601 James R. Thompson Blvd. East St. Louis, IL 62201-1101	618/583-2500
Triton College George Jorndt, President	504	2000 Fifth Avenue River Grove, IL 60171-1995	708/456-0300
Waubensee Community College John Swalec, Interim President	516	Illinois Route 47 at Harter Road Sugar Grove, IL 60554-9799	708/466-4811
John Wood Community College Robert Keys, President	539	150 South 48th Street Quincy, IL 62301-9147	217/224-6500

Maps



Illinois Public  
Community College  
Districts

WISCONSIN

528 McHenry

532 College of Lake County

512 Harper

535 Oakton

Truman

509 Elgin

504

Wright

City Colleges  
of Chicago  
District 508

504 Triton

Chicago Urban Skills  
Institute

Malcolm X

Washington  
College

502 DuPage

527  
Morton

Kennedy-King  
College

Daley  
College

Olive-Harvey

516 Waubensee

524  
Moraine Valley

525 Joliet

510  
South Suburban

INDIANA






### Community College Districts

515  
Prairie State

# Community College District 512

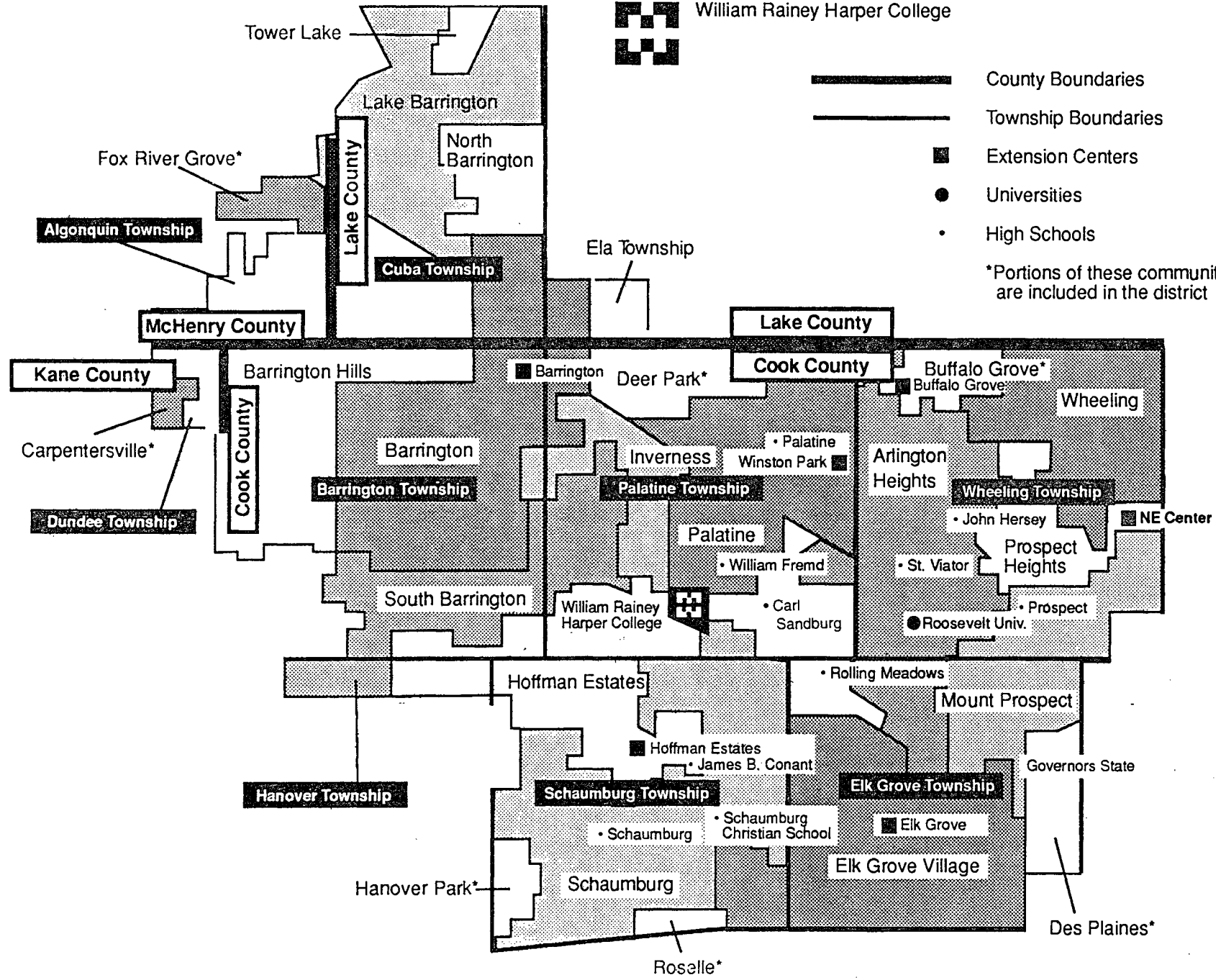


William Rainey Harper College

-  County Boundaries
-  Township Boundaries
-  Extension Centers
-  Universities
-  High Schools

\*Portions of these communities are included in the district

10



**Harper College serves the communities of:**

Arlington Heights  
Barrington  
Barrington Hills  
Buffalo Grove\*  
Carpentersville\*  
Deer Park\*  
Des Plaines\*  
Elk Grove Village  
Fox River Grove\*  
Hanover Park\*  
Hoffman Estates  
Inverness

Lake Barrington  
Mount Prospect  
North Barrington  
Palatine  
Prospect Heights  
Rolling Meadows  
Roselle\*  
Schaumburg  
South Barrington  
Tower Lakes  
Wheeling

\*Portions of these communities are included in the district.

**Total District Population: 516,000**



# Academic Programs

# Transfer Programs

Harper College provides programs of study allowing students to complete requirements for the first two years of a baccalaureate degree. Harper defines these programs as transfer programs. Some examples of major fields of study are as follows:

Art  
Biological Sciences  
Business Administration  
Communications  
Computer Science  
Education  
Engineering

Foreign Languages  
Health Education  
Liberal Arts  
Music  
Physical Education  
Science and Mathematics  
Social Science

# Career Programs

Harper College offers career/vocational programs. The sequence of courses is designed for individuals who desire to pursue a specific curriculum to prepare them for a particular career. Both associate degree and certificate programs are offered except where indicated.

Accounting Aide  
Accounting Clerk<sup>1</sup>  
Accounting—Payroll, State and Local Taxes<sup>1</sup>  
Administrative Assistant<sup>1</sup>  
Advertising Design and Illustration\*  
Agri-Business Service and Supply\*  
Agricultural Business Technology\*  
Auto Body Repair and Painting\*  
Automation Skills<sup>1</sup>  
Automotive Service Excellence\*  
Automotive Technology\*  
Aviation Maintenance Technology\*  
Aviation Professional Pilot\*  
Banking, Finance and Credit<sup>1</sup>  
Banking and Savings Association Management<sup>2</sup>  
Basic Addiction Counseling\*  
Biomedical Electronics Technology\*  
Bread and Pastry Arts<sup>1</sup>  
Building Codes and Enforcement<sup>1</sup>  
Business Information Management  
CAD Technician<sup>1</sup>  
CAM\*  
Cardiac Technology<sup>2</sup>  
Certified Professional Secretary<sup>1</sup>  
Child and Youth Advocacy\*  
CNC Technician<sup>1</sup>  
Commercial Credit Management<sup>2</sup>  
Communication Arts and Sciences\*  
Computer Information Systems—C Programming<sup>1</sup>  
Computer Information Systems—Computer Operator<sup>1</sup>  
Computer Information Systems—Microcomputers in Business  
Computer Information Systems—Midrange<sup>1</sup>  
Computer Information Systems—Technology  
Criminal Justice  
Culinary Arts<sup>1</sup>

Dental Assisting\*  
Dental Hygiene<sup>2</sup>  
Digital Electronics and Microprocessor Technology  
Early Childhood Education<sup>2</sup>  
Early Childhood Certificates:  
Before/After School Care  
Early Childhood Administrator  
Early Childhood Education Assistant Teacher  
Early Childhood Education Teacher Infant/Toddler  
Special Education Paraprofessional  
Electronic Servicing\*  
Electronic Technology  
Executive Secretarial Development  
Facilities Operation and Engineering\*  
Fashion Design  
Fashion Merchandising<sup>2</sup>  
Financial Management<sup>2</sup>  
Fire Science Technology  
General Office Assistant<sup>1</sup>  
Gerontology\*  
Graphic Arts and Design\*  
Health Insurance Coder<sup>1</sup>  
Health Information Technology  
Hospitality Management  
Hotel/Motel Management\*  
Human Resource Management<sup>1</sup>  
Human Services Management\*  
Industrial Building Construction\*  
Industrial Electrician\*  
Industrial Supervision Technology\*  
Industrial Work Management\*  
Insurance  
Interior Design<sup>2</sup>  
International Business  
Interpretation/Transliteration<sup>1</sup>  
Investment Economics and Analysis\*

\*These programs are offered through cooperative agreements with other community colleges.

<sup>1</sup>Certificate program only

<sup>2</sup>Associate degree program only

## Career Programs (continued)

Journalism<sup>2</sup>  
Laser Electro-Optic\*  
Legal Secretary  
Legal Technology  
Library/Media Technology\*  
Magnetic Resonance Imaging\*  
Machine Tool, Career Advanced Program\*  
Machine Tool Operation\*  
Machine Tool Technology\*  
Machine Repair Specialist\*  
Manufacturing Technology<sup>2</sup>  
Marketing<sup>2</sup>  
Materials/Logistics Management  
Mechanical Drafting<sup>1</sup>  
Mechanical Engineering Technology<sup>2</sup>  
Mechanical Maintenance/Repair\*  
Medical Laboratory Technology\*  
Medical Office Assistant  
Medical/Dental Secretary  
Medical Records Technology\*  
Medical Transcriptionist<sup>1</sup>  
Mental Health Generalist\*  
Nuclear Medicine\*  
Nursing  
Occupational Therapy Assistant\*  
Ophthalmic Technician\*  
Park and Grounds Operation Management<sup>2</sup>  
Park and Grounds Certificates:  
    Arboriculture  
    Golf Course Management  
    Grounds Equipment Operator  
    Nursery Operations  
    Turfgrass Management  
Personal Banking<sup>1</sup>  
Pharmacy Technician<sup>1</sup>  
Photo Offset\*  
Photography\*  
Physical Therapy Assistant\*  
Plant Science Technology<sup>2</sup>

Plant Science Certificates:  
    Floral Design  
    Garden Center Operations  
    Grounds Maintenance  
    Landscape Design  
    Master Floral Design  
    Pesticide Applicator  
    Plant Propagation  
Plastics Processing and Fabricating\*  
Plastics Technology\*  
Production Engineering Technician<sup>1</sup>  
Production Management Technology\*  
Production Welding<sup>1</sup>  
Quality Assurance<sup>1</sup>  
Radiologic Technology\*  
Real Estate  
Real Estate License Preparation<sup>1</sup>  
Refrigeration and Air Conditioning  
Refrigeration and Air Conditioning Certificates:  
    Heating Service  
    Refrigeration Service  
    Refrigeration and Air Conditioning Service  
    Residential Comfort Systems  
Registered Nurse Refresher\*  
Rehabilitation Nursing\*  
Respiratory Therapy Technician\*  
Retail Merchandising<sup>1</sup>  
Secretarial  
Small Business Management  
Small Business Specialist\*  
Substance Abuse\*  
Supermarket Management\*  
Supervisory and Administrative Management  
Technical Communications\*  
Tool and Mold Maker\*  
Travel and Tourism\*  
Travel and Transportation\*  
Truck Driving\*  
Truck Driving Owner/Operator\*  
Water/Wastewater\*  
Welding\*  
Welding/Advanced\*  
Word Processing Specialist<sup>1</sup>

\*These programs are offered through cooperative agreements with other community colleges.

<sup>1</sup>Certificate program only

<sup>2</sup>Associate degree program only

## Continuing Education Programs

Continuing Education programs are an integral part of the Harper College comprehensive educational effort. They are designed to serve as lifelong learning opportunities. Programs are aimed at meeting the educational, cultural and training needs of individuals, business and industry, municipalities, professional and occupational groups. The wide range of offerings cover management training, technical training, psychological and health education needs as well as fine arts, industrial arts, home economics, horticulture and a variety of academic courses.

Each academic division offers related Continuing Education courses. The Office of Community and Program Services also offers Continuing Education courses and provides a Central Information Specialist to answer Continuing Education questions on the main campus, as well as those related to extension sites.

# Continuing Education

## **Academic Enrichment and Language Studies Division**

Adjunct Faculty Development  
Professional Development  
Test Review—Academic

## **Business and Social Science Division**

B.A.S.S.E.T. Training/Alcohol Awareness  
Certified Financial Planning  
Computer Training  
Hospitality/Culinary  
Institute for Management Development  
Insurance  
International Trade  
Material Management  
Paralegal Updates  
Office Careers  
Personal Finance  
Real Estate  
Sales Training  
Small Business Development  
Test Reviews—LSAT/GMAT  
Travel Academy  
Video Production

## **Liberal Arts Division**

Cultural Awareness  
Home and Family  
International  
Leisure  
Music Academy

## **Life Science and Human Services Division**

Allied Health Care Professional  
Animal/Pet Health Care  
Cardiopulmonary Resuscitation  
Certified Nursing Assistant  
Cosmetology  
Criminal Justice  
Dental Hygiene  
Dietetic Technician  
Floral  
Home/Small Engine Repair  
Landscape and Garden  
Medical Office Assistant  
Nature and Biology  
Nursing  
Supervisor/Admin Health

## **Physical Education, Athletics and Recreation Division**

Human Performance Laboratory  
Physical Education

## **Student Development Division**

Career Transitions  
Women's Program  
Business and Personal Topics  
Displaced Homemaker and Single Parent Programs  
Domestic Violence Support Group  
Information and Referral Services  
Women's History Week

## **Technology, Mathematics and Physical Science Division**

Astronomy  
Automation Skills  
Blue Print Reading  
CAD  
Ground Aviation  
Manufacturing  
Quality Concepts  
UNIX Technologies

## **Community and Program Services**

Community Services, Seminars, Workshops  
High School Cooperative  
Older Adult Programs  
Star Lab/Sciences Programs  
Travel and Learn

# Disciplines and Programs by Division

## Academic Enrichment and Language Studies

Adult Educational Development  
English as a Second Language  
Interpretation/Transliteration  
Learning Assistance Center  
    College Learning Skills  
    Communication Skills  
    Diagnostic Testing  
    English (Developmental)  
    Reading  
    Tutoring Center  
    Writing Center  
Linguistics  
Sign Language Studies  
Continuing Education Programs

## Business and Social Science

Accounting Aide  
Accounting Clerk  
Accounting—Payroll, State and Local Taxes  
Administrative Assistant  
Anthropology  
Banking, Finance and Credit  
Banking and Savings Association Management  
Bread and Pastry Arts  
Business Administration  
Business Information Management  
Certified Professional Secretary  
Commercial Credit Management  
Computer Information Systems—C Programming  
Computer Information Systems—Computer Operator  
Computer Information Systems—Microcomputers in Business  
Computer Information Systems—Midrange  
Computer Information Systems—Technology  
Culinary Arts  
Economics  
Education  
Executive Secretarial Development  
Financial Management  
General Office Assistant  
Geography  
History  
Hospitality Management  
Human Resource Management  
Insurance  
International Business  
Journalism  
Legal Secretary  
Legal Technology  
Marketing  
Materials/Logistics Management  
Personal Banking  
Political Science  
Psychology  
Real Estate  
Real Estate License Preparation  
Retail Merchandising  
Sales Management and Development  
Secretarial  
Small Business Management  
Supervisory and Administrative Management  
Word Processing Specialist  
Continuing Education Programs

## Liberal Arts

Art  
English  
Fashion Design  
Fashion Merchandising  
Fine Arts  
French  
German  
Humanities  
Interior Design  
Japanese  
Literature  
Music  
Philosophy  
Spanish  
Speech  
Continuing Education Programs

## Life Science and Human Services

Biology  
Criminal Justice  
Dental Hygiene  
Dietetic Technician  
Early Childhood Education  
Early Childhood Certificates:  
    Before/After School Care  
    Early Childhood Administrator  
    Early Childhood Education Assistant Teacher  
    Early Childhood Education Teacher  
    Infant/Toddler  
    Special Education Paraprofessional  
Health Insurance Coder  
Human Services  
Industrial and Retail Security  
Medical Office Assistant  
Medical/Dental Secretary  
Medical Transcriptionist  
Nursing  
Park and Grounds Operations Management  
Park and Grounds Certificates:  
    Arboriculture  
    Golf Course Management  
    Grounds Equipment Operator  
    Nursery Operations  
    Turfgrass Management  
Pharmacy Technician  
Plant Science Technology  
Plant Science Certificates:  
    Floral Design  
    Garden Center Operations  
    Greenhouse Operations  
    Grounds Maintenance  
    Landscape Design  
    Master Floral Design  
    Pesticide Applicator  
    Plant Propagation  
Continuing Education Programs

## **Physical Education, Athletics and Recreation**

Cardiac Technology  
Health Education  
Physical Education  
Continuing Education Programs

## **Technology, Mathematics and Physical Sciences**

Architectural Technology  
Astronomy  
Automation Skills  
Building Codes and Enforcement  
CAD Technician  
Chemistry  
Computer Science  
Digital Electronics and Microprocessor Technology  
Electronics Technology  
Engineering  
Fire Science Technology  
Geology  
Machinist  
Manufacturing Technology  
Mathematics  
Mechanical Drafting  
Mechanical Engineering Technology  
Physical Science  
Physics  
Production Engineering Technician  
Production Welding  
Quality Assurance  
Refrigeration and Air Conditioning  
Refrigeration and Air Conditioning Certificates:  
    Heating Services  
    Refrigeration Service  
    Refrigeration and Air Conditioning Services  
    Residential Comfort Systems  
Continuing Education Programs

## **Student Development**

Career Development  
Center for Students with Disabilities  
Cooperative Work Education  
Humanistic Psychology  
Women's Program

Students

## Facts about Harper Students

- The average age of Harper students is 32.
- Sixty-two percent of the students are women.
- Fifty-nine percent of degree credit Harper students work full time while attending Harper, many of them in semi-professional or technical positions.
- Nineteen percent of Harper's degree credit students have a bachelor's degree or higher; in continuing education, 47 percent have already achieved a bachelor's degree or higher.
- Approximately one in three high school graduates in the district who go to college begin their studies at Harper.
- Fifty-eight percent of Harper's career students become employed full time upon leaving Harper.
- Eventually 79 percent of Harper's baccalaureate oriented alumni will transfer to another college and 50 percent will achieve a bachelor's degree.
- About three out of every eight full-time students will complete an associate degree at Harper.
- The average income of degree credit students who are independent is about \$35,000, the average income of parents of dependent students is \$58,000, and the average income of continuing education students is \$51,000.
- Seventy percent of the jobs career alumni hold are closely related to their major field at Harper.
- Sixty-eight percent of Harper career alumni are working within the district, and only five and one half percent are working close to the Chicago Loop.
- More than two-thirds of Harper's degree credit students are part-time students.
- About 46 percent of career graduates are regularly supervising other employees six years after leaving Harper.
- More than half of the students are persuaded to attend Harper by three principal factors. These are recommendations of friends and relatives; ability to enroll in a specific course or program desired; and Harper's convenience.
- Alumni who transfer to another college rate 18 aspects of Harper better than the college they are now attending, and only four of the areas of their new college better than Harper.



# Harper Student Profile

	1989	1990	1991	1992	1993
<b>Percent Distribution by Enrollment*</b>					
Baccalaureate	38.8	36.9	35.6	36.4	37.5
Occupational/Vocational	22.4	20.7	20.6	22.6	18.7
General Studies	4.9	5.9	5.8	4.1	4.4
Developmental	12.0	10.9	10.8	12.3	7.2
Credit Free	21.9	25.6	27.2	24.6	32.2
<b>Percent Distribution by Sex*</b>					
Male	38.4	37.4	37.3	38.2	39.9
Female	61.6	62.6	62.7	61.8	60.1
<b>Percent Distribution by Classload*</b>					
Full-time	19.7	17.9	17.0	17.8	19.9
Part-time	80.3	82.1	83.0	82.2	80.1
<b>Percent Distribution by Age*</b>					
19 and below	19.5	17.8	15.8	15.9	15.3
20-21	10.0	10.0	10.2	9.8	11.2
22-25	13.2	12.8	13.1	13.8	14.7
26-35	25.8	25.6	25.4	25.0	25.2
36-45	15.9	16.6	17.0	17.2	16.3
46-55	8.3	9.4	9.5	9.7	9.3
Over 55	7.3	7.8	9.0	8.6	8.0
<b>Percent Distribution by Ethnic Description</b>					
Asian			5.9	7.2	5.8
Native American			.2	.3	.2
Black			1.7	2.0	1.8
Hispanic			8.9	11.9	11.7
White			82.5	78.2	79.0
Foreign			.8	.4	1.5
<b>Percent with Bachelor's Degree or Higher Prior to Enrolling at Harper**</b>					
	11.6	10.3	14.4	18.9	
<b>Percent Employed Full Time**</b>					
	63.5	62.9	59.8	59.8	
<b>Percent Employed as Manager, Executive, or Professional**</b>					
	13.3	10.8	14.9	13.8	

\*Includes all students

\*\*Credit students

# Enrollment

## Comparison of 1991, 1992 and 1993 Fall Enrollments by Division

Division or Organizational Unit	Full-Time Equivalent (FTE) <sup>1</sup>		
	1991	1992	1993
Academic Enrichment and Language Studies	1046.1	1083.5	1015.7
Business and Social Science	2891.5	2891.2	2750.6
Technology, Math and Physical Science	1534.1	1593.8	1567.0
Liberal Arts	2061.7	2083.4	2008.8
Life Science and Human Services	1061.1	1094.6	1064.1
Physical Education, Athletics and Recreation	387.3	355.9	353.2
Student Development (includes Women's Program)	59.9	76.5	99.1
Community Services & Corporate Services	<u>35.2</u>	<u>26.6</u>	<u>41.0</u>
Totals	9076.9	9205.5	8899.5

## Student-Faculty Ratio

Fall Credit FTE Students		FTE Faculty	Ratio
1987	7522	443.3	16.9
1988	7833	495.1	15.8
1989	8091	363.0	22.3
1990	7915	366.7	21.6
1991	8312	419.0	19.8
1992	8489	436.5	19.4
1993	8247		

## Transfer and Career Program Enrollment by Divisions

	Transfer (FTE)			Career (FTE)		
	Fall 1991	Fall 1992	Fall 1993	Fall 1991	Fall 1992	Fall 1993
Academic Enrichment and Language Studies	109.4	150.4	135.6	110.1	102.5	102.9
Business and Social Science	2048.5	2007.1	1982.2	676.1	710.6	611.3
Technology, Math and Physical Science	1099.3	1152.3	1134.0	231.1	245.2	204.8
Liberal Arts	1742.2	1823.6	1791.4	123.6	108.1	115.9
Life Science and Human Services	433.0	458.9	493.5	464.3	477.8	463.7
Physical Education, Athletics and Recreation	144.8	155.8	156.8	11.0	9.9	21.0
Student Development	59.9	70.0	83.5	0	0	1.5

<sup>1</sup>Full-time Equivalent (FTE) is the number of 15-credit hour loads represented by the total number of credit hours for which students are enrolled.

# College Finances

# Funding for Harper

Harper College operating revenue (Education and Building Funds) comes from three major sources: student tuition, local taxes and state apportionment.

## Student Tuition

The Board of Trustees annually establishes tuition for credit courses which is limited by law to one-third of the per capita cost. The current resident tuition is \$36.00 per semester hour.

Tuition and fees for courses of a non-credit nature (courses which do not lead to a state-approved degree or certificate) cover the cost of instruction. No state or local tax monies are used to support these courses.

For 1993-94, tuition revenue is expected to be \$10,633,334 which represents 23.67 percent of Harper College's operating fund income.

## Local Taxes

All real estate property tax in the State of Illinois is used as the basis by which local educational institutions, under the authority of the law, determine the amount of tax revenue that can be made available to them. The tax rate is based on a percentage of the College district's equalized assessed valuation.

For 1993-94, the anticipated revenue from local taxes is \$23,917,477 which represents 53.24 percent of Harper College's total operating fund income.

## State Apportionment

The state funding formula is the method used to channel state money to the individual schools. The formula is cost-based and the money is distributed on the basis of enrolled students. The formula determines how much is needed to operate all the colleges for a year. The resource requirements are determined by using the actual enrollment from the prior two years, the unit cost (how much it cost per student two years past), and an adjustment for inflation in the areas of salaries, utilities, library materials and general costs plus other identified special needs. Then all local tax revenue is subtracted, and the state apportionment is supposed to be the amount remaining.

The bulk of this money is distributed through credit hour grants in seven instructional categories: Baccalaureate, Business, Technical Health, Remedial/Developmental, Adult Basic Education and General Studies. The College also receives money for grants to fund programs for disadvantaged students on a credit hour basis.

For 1993-94, state apportionment totals \$6,277,288 which represents 13.97 percent of the College's total operating fund income.

## Others

In addition to these major sources, Harper College obtains some revenue from student fees, chargebacks, interest on investments, sales and service fees, various federal and state grants, and corporate tax.

For 1993-94, the total revenue from these sources is \$4,099,640 which represents 9.12 percent of the College's total income.

# Harper College Budget

## **The Budget Process**

The budget is more than a statistical tabulation of numbers that show anticipated revenue and expenditures. It is the financial interpretation of the ongoing educational program for one year beginning July 1 and ending June 30.

Budget planning is a continuous process designed to culminate in the development of a budget that accurately expresses the district's educational program for one year.

Evaluation of the budget at the end of a fiscal year must include an appraisal of the educational program and the total operation of the College.

## **Budget Philosophy**

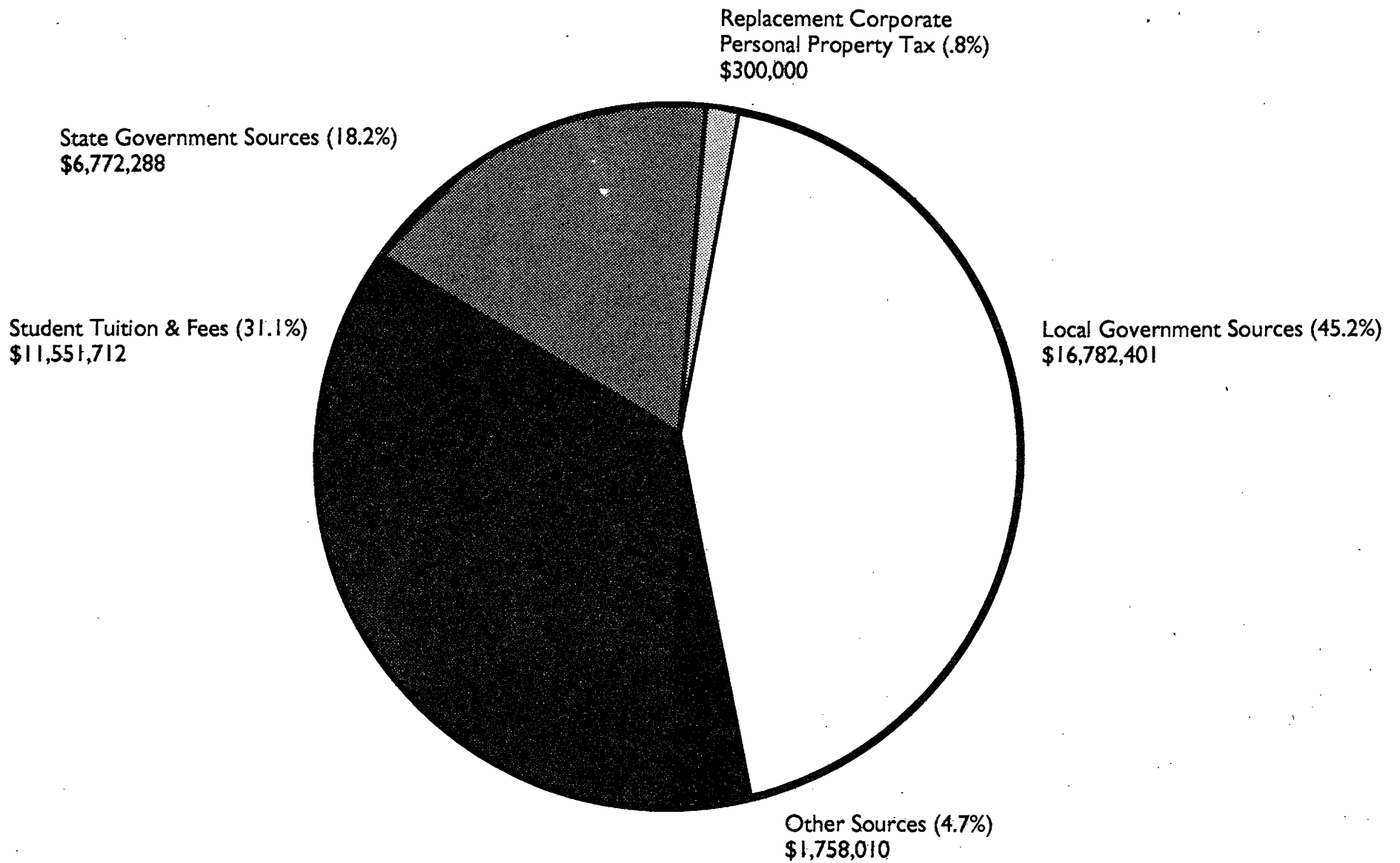
One of the cornerstones of William Rainey Harper College's philosophy is the commitment to involve faculty and students in the development and operation of the College. The sharing of authority requires a commensurate sharing of responsibility by the individuals or groups involved. The advisory role of the faculty and students is limited only by the ability of these groups to analyze problems and present recommendations to the administration and Board of Trustees. The basis for this philosophy is the belief that the democratic process will ensure that Harper College continues to evolve as an outstanding community college.

Based upon this institutional philosophy, a budget philosophy has been developed that involves the faculty, cost center managers and administration in the budget formulation and assigns responsibility to those who share in the authority to implement the budget. The following guidelines have been established:

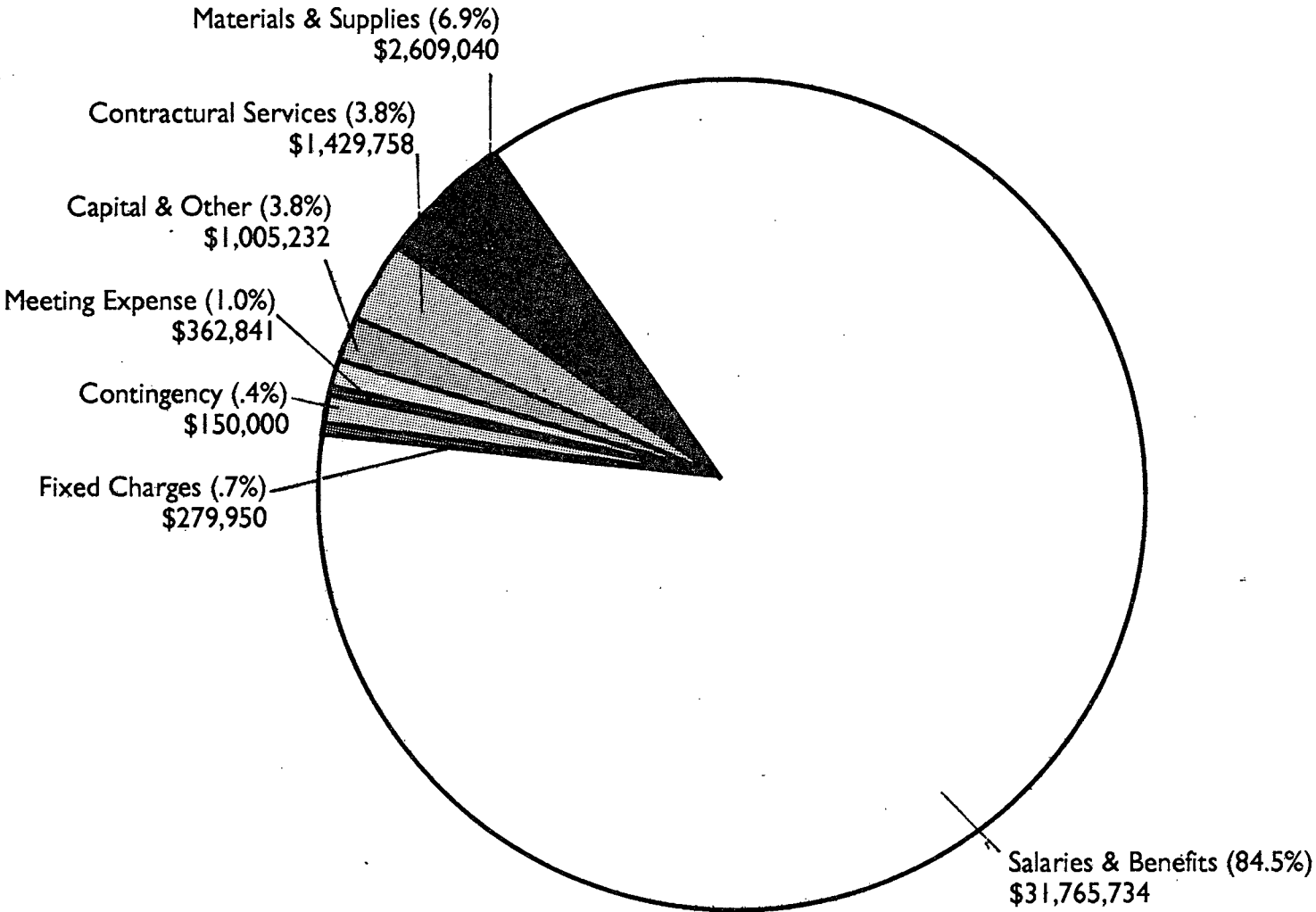
1. The final authority for the adoption of the budget rests with the Board of Trustees and is based upon the recommendation of the President.
2. The President, in consultation with the four vice presidents, is responsible for balancing expenditures for programs within the framework of the budget, based on overall institutional goals.
3. The Vice President of Administrative Services is responsible for the formulation, operation, and control of the adopted budget.
4. In order to obtain faculty and cost center manager involvement, the budget has been decentralized along organizational lines. A decentralized budget places responsibility at the operational level for budgetary planning. A given cost center manager is in the best position to set priorities for efficient operation based upon operating experience. As the budget formulation progresses and reductions are made collectively by all concerned in order to balance the budget, each manager becomes familiar with the operation of all cost centers that in total make up the budget. The result is a budget that faculty and cost center managers have agreed upon, can understand and therefore can support. Thus, budget formulation proceeds along organizational lines until it is legally adopted by the Board of Trustees.

5. While the business office is responsible for the overall control of the budget, individual cost centers are responsible for their estimates and subsequent expenditures. All expenditures initiated by the individual cost centers must receive approval through organizational lines of authority.
6. All expenditures must conform to the policies of the Board of Trustees.

# Education Fund Budget 1993-94 Estimated Revenue

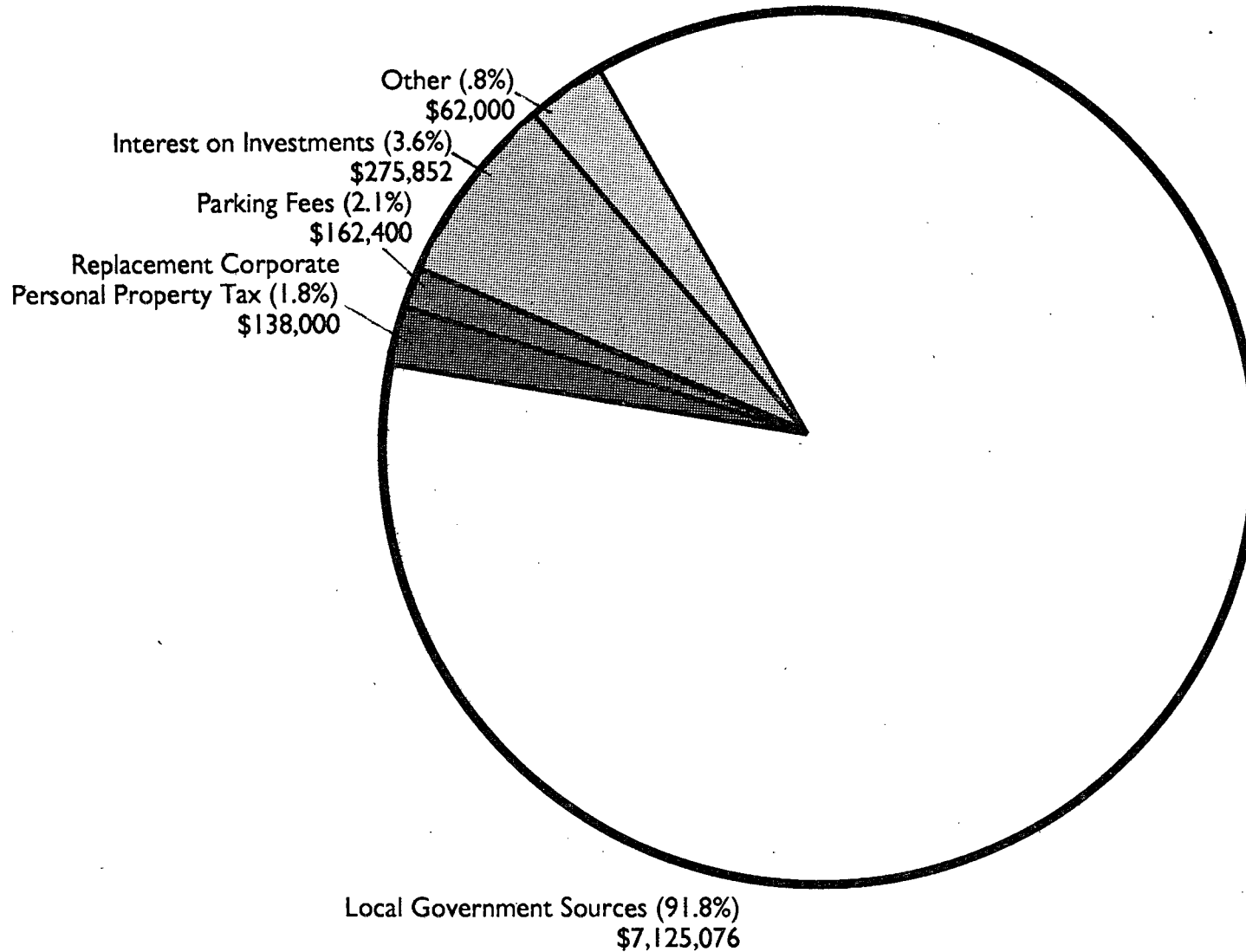


# Education Fund Budget 1993-94 Expenditures

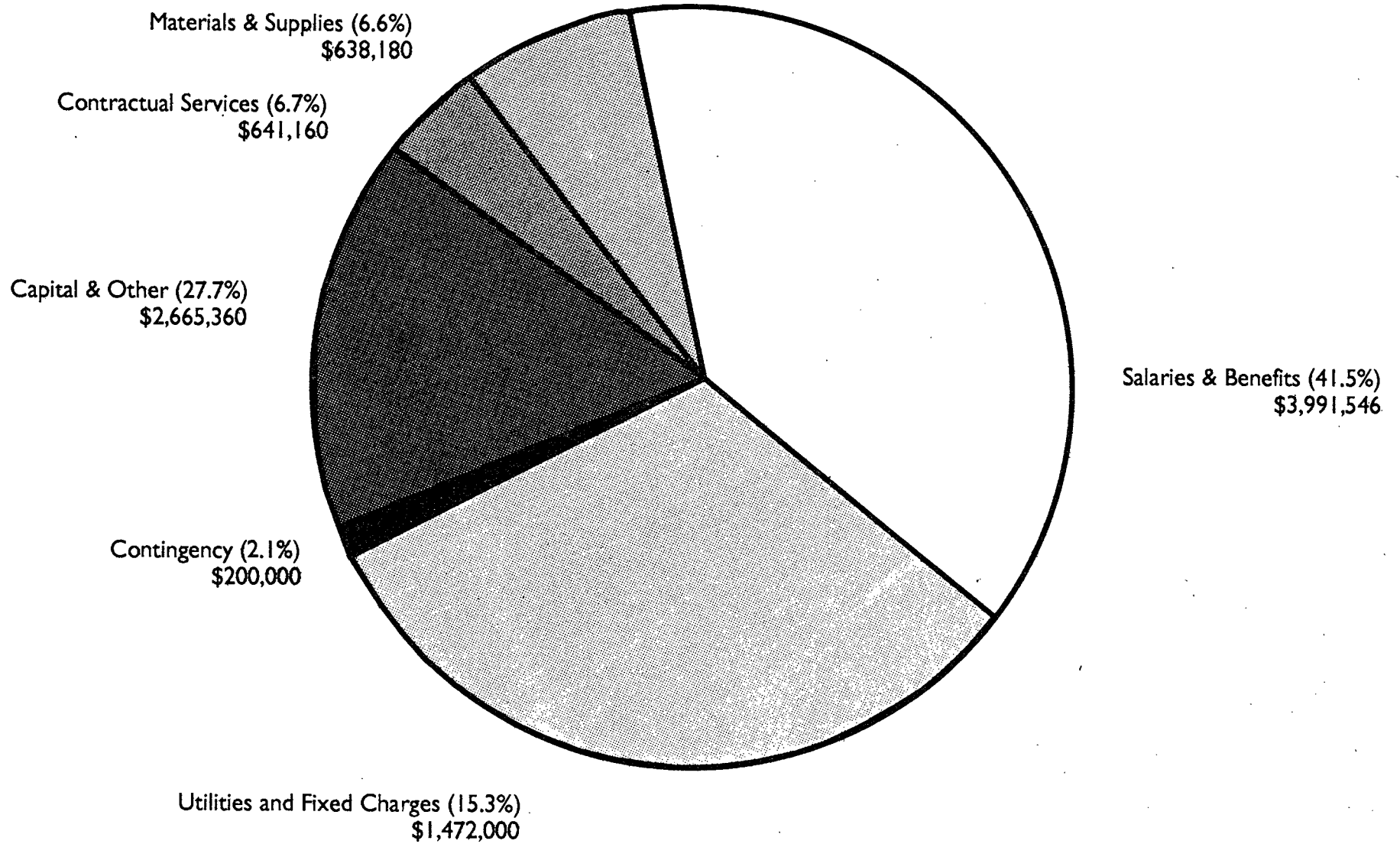




# Operations and Maintenance Fund Budget 1993-94 Estimated Revenue

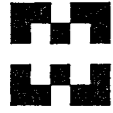


# Operations and Maintenance Fund Budget 1993-94 Expenditures

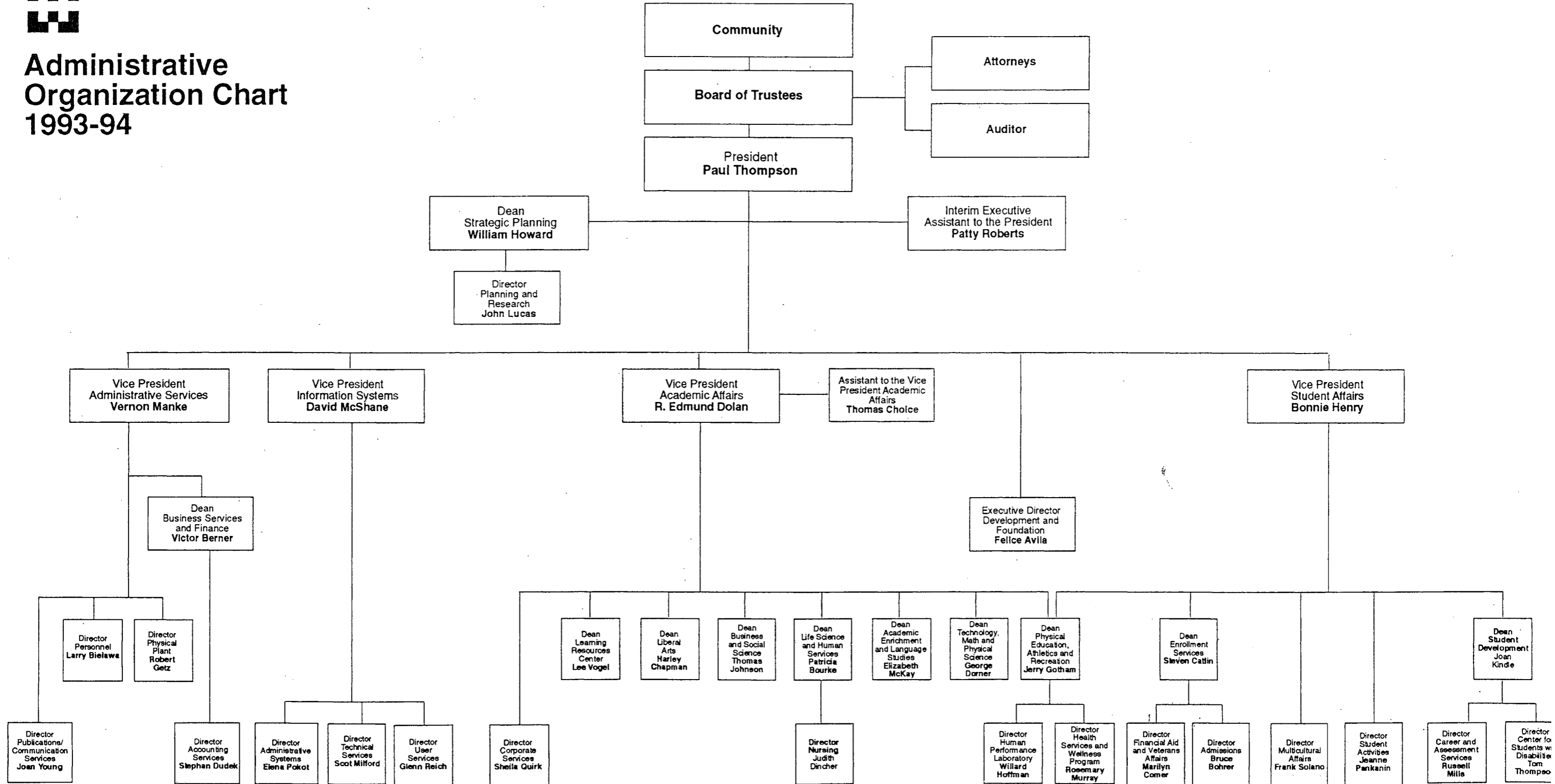


# Organizational Structure and Staff

William Rainey Harper College

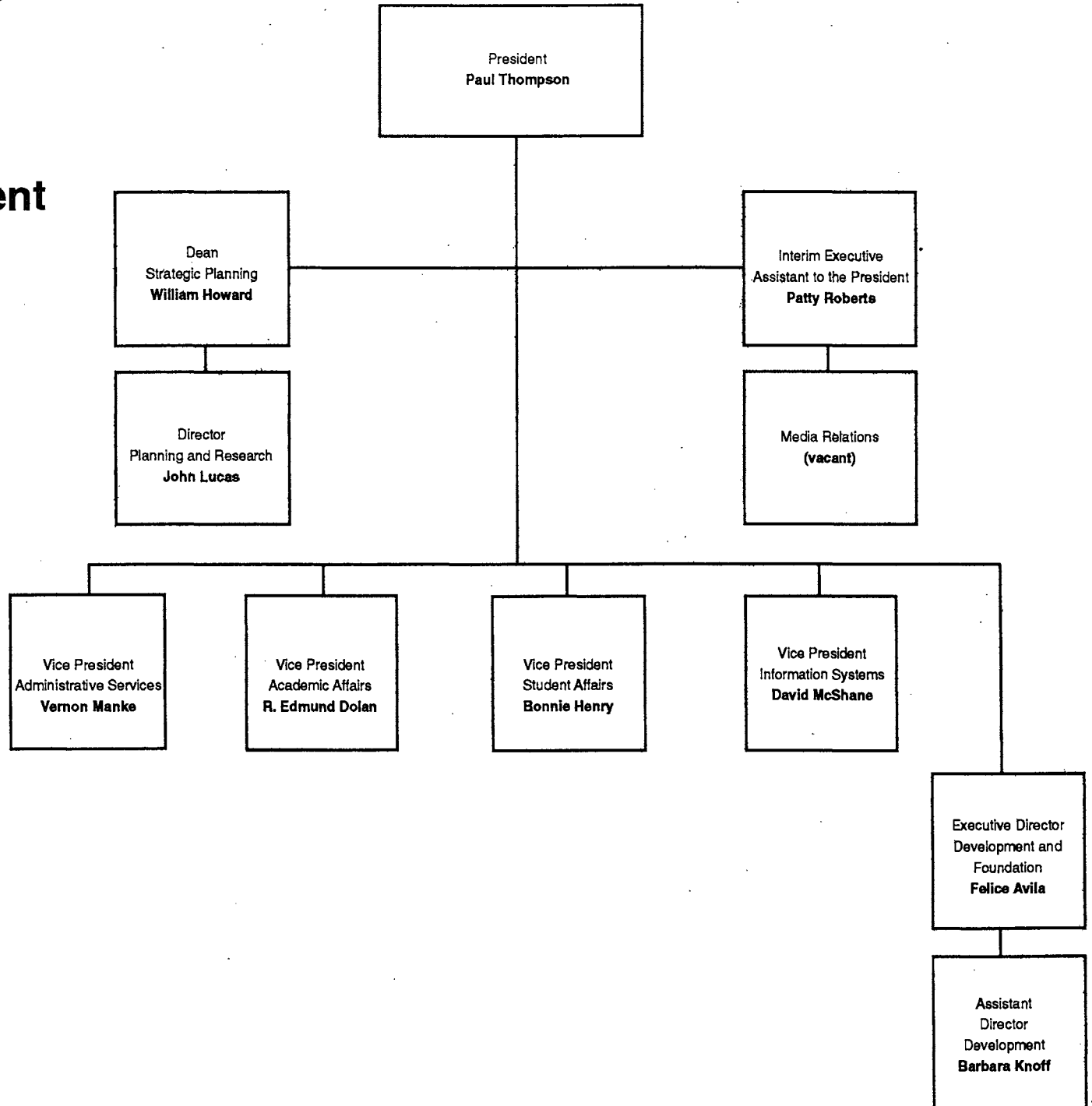


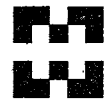
Administrative Organization Chart 1993-94



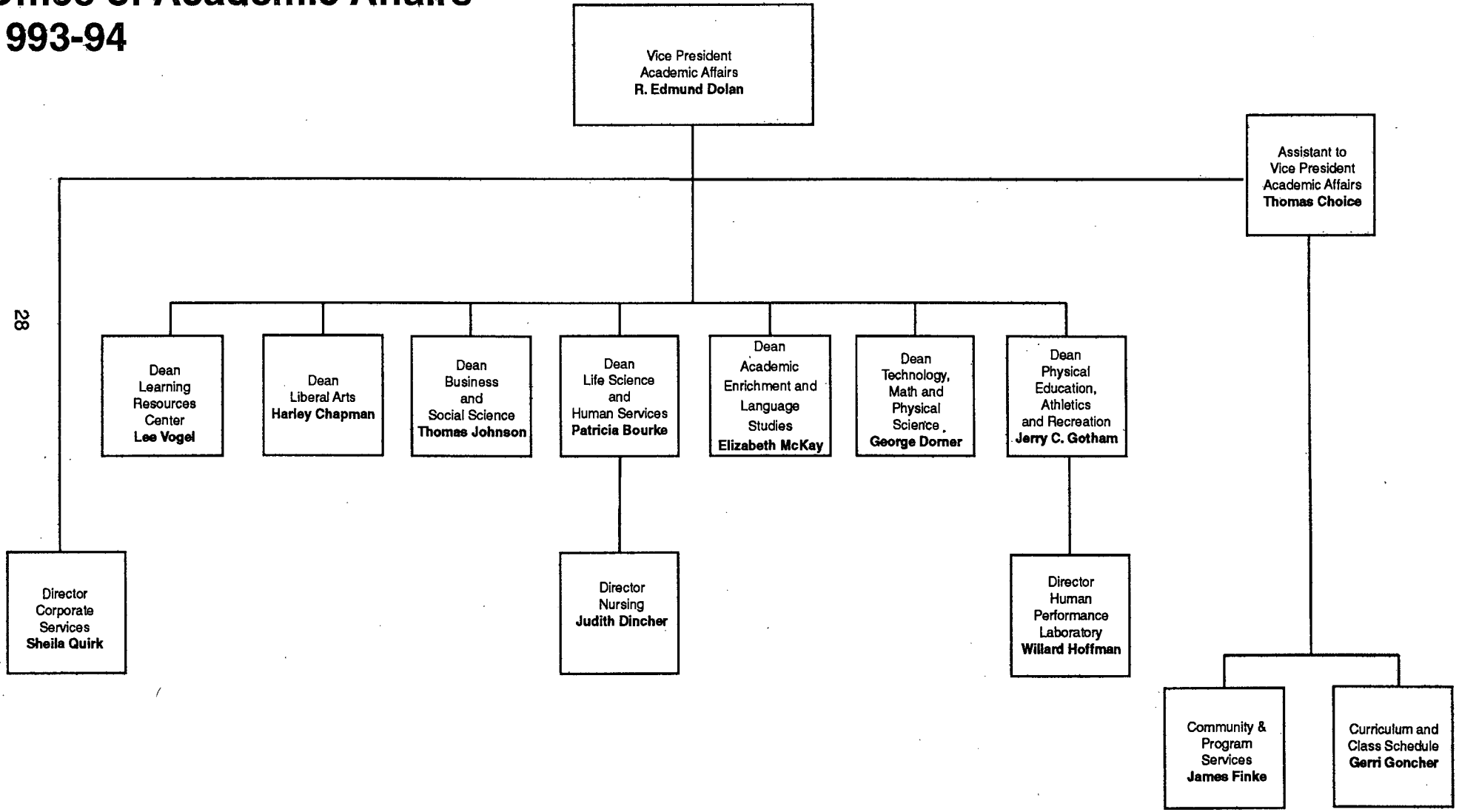


**Organization Chart  
Office of the President  
1993-94**



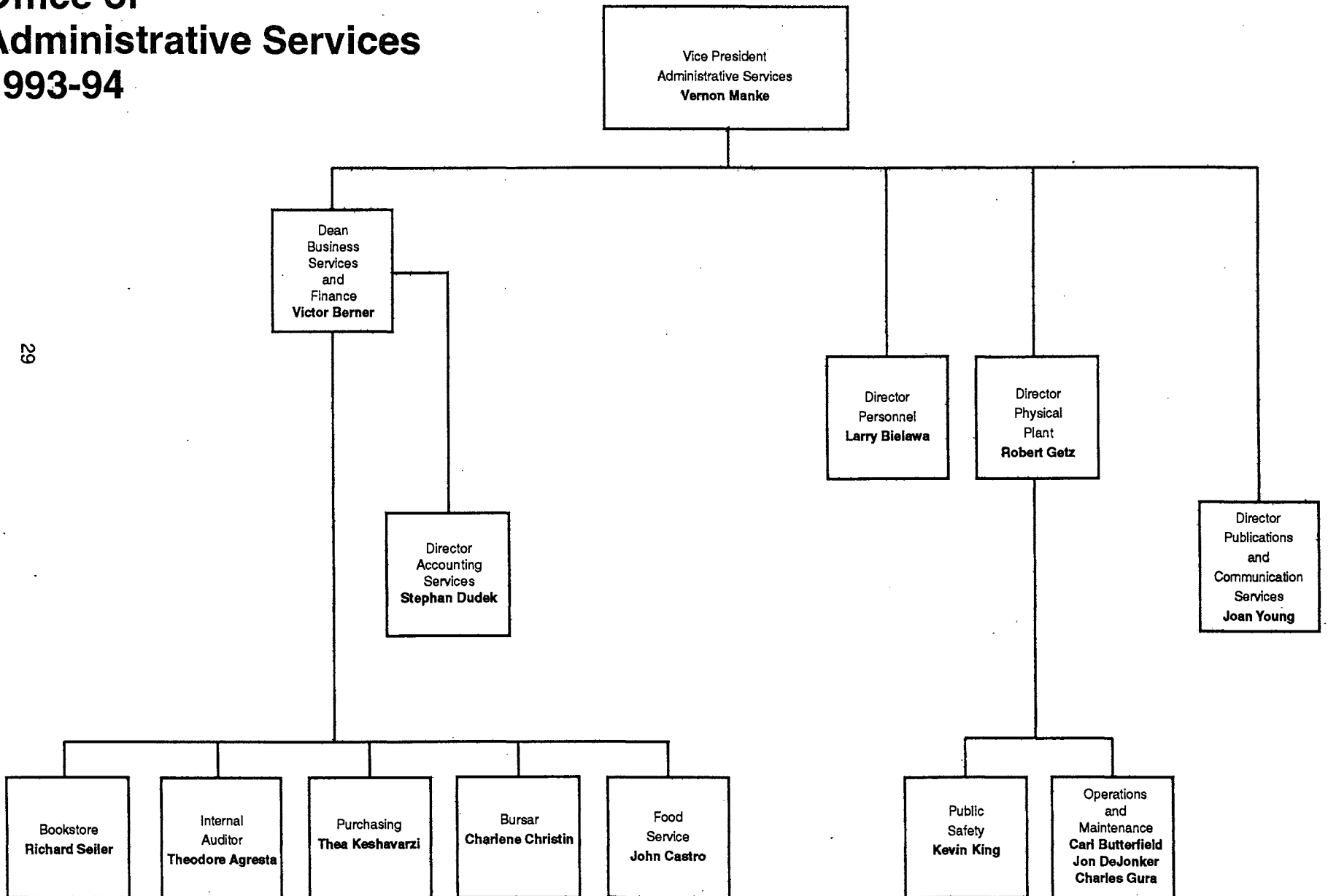


# Organization Chart Office of Academic Affairs 1993-94





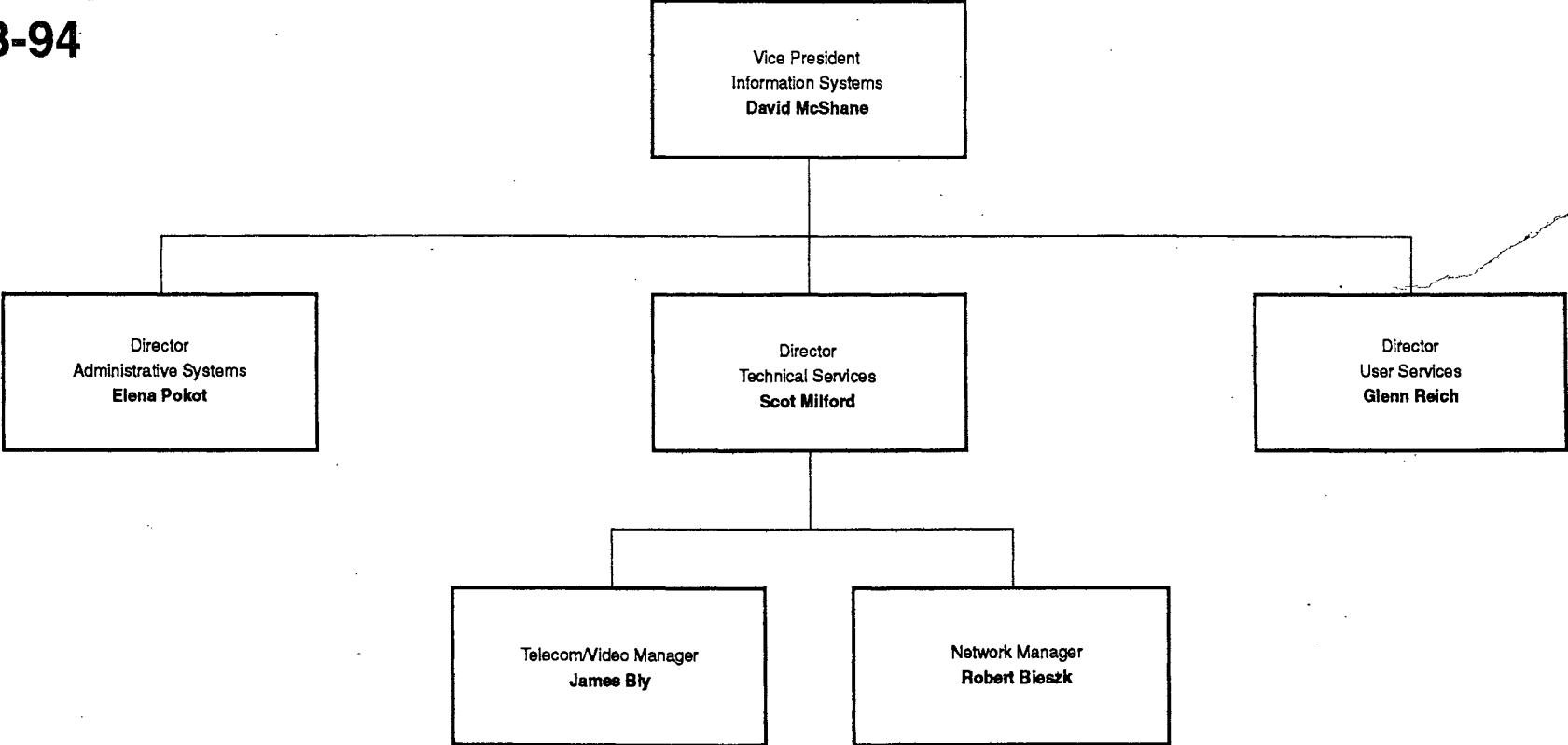
# Organization Chart Office of Administrative Services 1993-94





# Organization Chart Office of Information Systems 1993-94

30

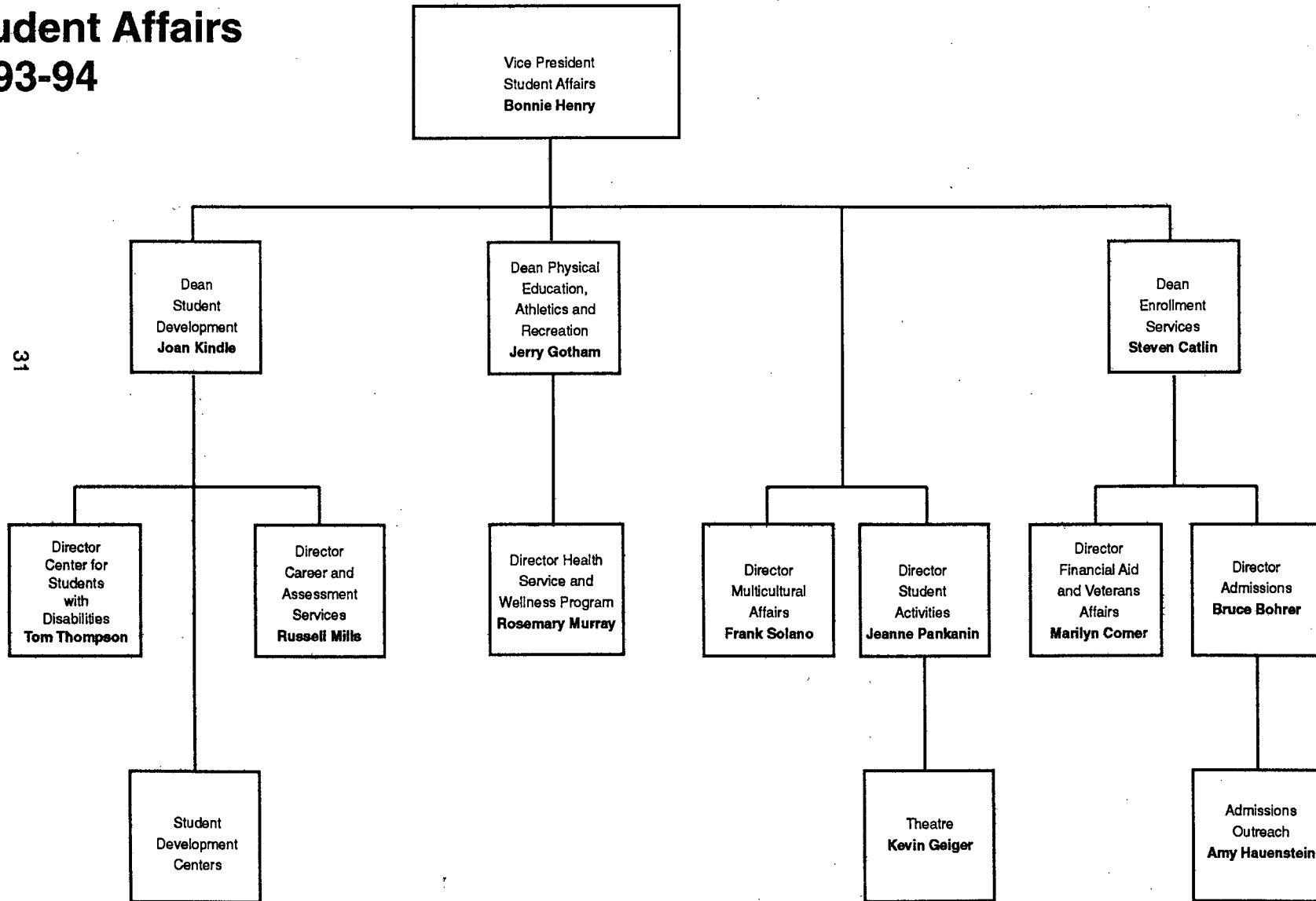






# Organization Chart Office of Student Affairs 1993-94

31



## **General Administration**

Paul N. Thompson, President  
R. Edmund Dolan, Vice President of Academic Affairs  
Bonnie Henry, Vice President of Student Affairs  
Vernon F. Manke, Vice President of Administrative Services  
David McShane, Vice President, Information Systems  
William Howard, Dean of Strategic Planning  
Felice P. Avila, Director of Development  
John A. Lucas, Director of Planning and Research

## **Academic Affairs**

Thomas Choice, Assistant to the Vice President of Academic Affairs  
Patricia G. Bourke, Dean of Life Science and Human Services  
J. Harley Chapman, Dean of Liberal Arts  
George Dorner, Dean of Technology, Mathematics, and Physical Science  
Jerry C. Gotham, Dean of Physical Education, Athletics and Recreation  
Thomas Johnson, Dean of Business and Social Science  
Elizabeth R. McKay, Dean of Academic Enrichment and Language Studies  
Lee Vogel, Dean of Learning Resources  
Judith Dincher, Director of Nursing  
Willard Hoffman, Director of Human Performance Laboratory  
Sheila Quirk, Director of Corporate Services

## **Administrative Services**

Victor E. Berner, Dean of Business Services and Finance  
Larry M. Bielawa, Director of Personnel  
Robert Getz, Director of Physical Plant  
Stephan Dudek, Director of Accounting Services  
Joan Young, Director of Publications and Communication Services

## **Information Systems**

Scot Milford, Director of Technical Services  
Elena Pokot, Director of Administrative Systems  
Glenn Reich, Director of User Services

## **Student Affairs**

Steven J. Catlin, Dean of Enrollment Services  
Joan Kindle, Dean of Student Development  
Bruce Bohrer, Director of Admissions  
Marilyn Comer, Director of Financial Aid and Veterans Affairs  
Russell S. Mills, Director of Career and Assessment Services  
Rosemary Murray, Director of Health Service and Wellness Program  
Jeanne A. Pankanin, Director of Student Activities  
Frank J. Solano, Director of Multicultural Affairs  
Tom Thompson, Director of Center for Students with Disabilities

## Number of Employees

### Full-time:

Administrators	36
Faculty	218
Classified Staff	194
Professional/Technical	71
IEA/NEA	74
Supervisory/Confidential	<u>37</u>
	630

### Part-time:

Faculty	600
Classified Staff	78
Professional/Technical	21
IEA/NEA	4
Supervisory/Confidential	<u>2</u>
	703

## Harper College Staff Organizations

### Faculty Senate

President, Diane Callin  
Vice President, Ray Moehrlin  
Secretary, Janet Friend Westney  
Treasurer, Martin Ryan  
Grievance Chairperson, James Arnesen

### Classified Employee Council

Chairperson, Charlene Christen  
Vice Chairperson, Jean Hoffman  
Secretary, Lorel Kelson  
Representatives: Pam Chepil  
                  Jeanne Kline  
                  Bill Neumann  
                  Barbara Norcross  
                  Shirley Shetka  
                  Nancy Wahi

# Faculty Fall 1993

## Number of Faculty by Division/Area

	Course Selections	Full-Time Faculty	Full-Time Equivalent Part-Time Faculty
Academic Enrichment and Language Studies	199	22	37.2
Business and Social Science	520	44	51.8
Liberal Arts	426	49	46.0
Learning Resources Center		5	2.6
Life Science and Human Services	149	35	28.0
Physical Education, Athletics and Recreation	84	5	5.3
Student Development	34	19	2.0
Technology, Mathematics and Physical Science	<u>251</u>	<u>39</u>	<u>35.0</u>
Total	1,663	218	207.9

## Degrees of Full-Time Faculty by Division/Area

	Master's Degree	Doctorate
Academic Enrichment and Language Studies	20	1
Business and Social Science	35	6
Liberal Arts	30	16
Learning Resources Center	6	0
Life Science and Human Services	24	5
Physical Education, Athletics and Recreation	5	0
Student Development	15	5
Technology, Mathematics and Physical Science	29	9

# Services and Facilities

# Service and Information Directory

**College Hours:** Offices are open for business Monday through Friday from 8:00 am to 4:30 pm. The Registrar's and Business Offices are open from 8:00 am until 8:00 pm Monday through Thursday, from 8:00 am until 4:30 pm on Friday and from 9:00 am until 12:00 noon on Saturday. Operating hours may differ during summer and vacation periods.

**Class Hours:** Classes are scheduled Monday through Friday from 7:00 am until 11:00 pm, Saturday from 7:00 am until 6:00 pm and Sunday from 1:00-6:00 pm.

<u>DID Number (direct dial)</u>	<u>925-</u>	<u>DID Number</u>	<u>925-</u>
<b>Academic Advising and Counseling Centers</b>		<b>Cashier-Tuition and Fee Payments</b>	
1117	6522	Business Office	
D142	6393	A214	6439
<b>Academic Regulations</b>		<b>Center for New Students and Orientation</b>	
Vice President of Academic Affairs		F132	6208
D129	6370	<b>Center for Students with Disabilities</b>	
<b>Admissions/Applications</b>		D119	6266
Admissions Office		<b>Child Care Service, Child Learning Center</b>	
C101	6700	I131 (office I129)	6262
<b>Adult Educational Development</b>		<b>College Newspaper <i>Harbinger</i></b>	
F345	6223	A367	6460
Northeast Center		<b>Community and Program Services</b>	
708/537-5420		C102	6591
<b>Affirmative Action</b>		<b>Community Education Non-Credit Offerings</b>	
Personnel Director		Community and Program Services	
A320	6216	C102 (information)	6591
<b>Americans with Disabilities Act (ADA) and Section 504 of the Rehabilitation Act of 1973—Compliance Officer</b>		Registration 708/397-3377	
Dean of Academic Enrichment and Language Studies		<b>Cooperative Education</b>	
F130	6204	A347	6720
<b>Assessment and Testing Center</b>		<b>Corporate Services</b>	
A148	6541	A317	6668
<b>Athletic Advisor/Counselor</b>		<b>Counseling</b>	
M202a	6680	Community Counseling Center	
<b>Board of Trustees</b>		A347	6577
Office of the President		Academic Advising	
A309	6390	I117	6522
<b>Box Office</b>		D142	6393
J137	6100	Career	
<b>CAD and Manufacturing Center</b>		A347	6220
H209a	6996	Center for New Students and Orientation	
397-1640		F132	6208
FAX: 708/397-1810		Personal/Crisis	
<b>Cardiac Rehabilitation</b>		A347	6577
Northwest Cardiac Rehabilitation Center		<b>Credits or Graduation Requirements</b>	
M215	6486	Registrar's Office	
<b>Career and Personal Development Center</b>		A213 Student Development Faculty	6600
A347	6220	<b>Deaf &amp; Hard-of-Hearing Support Services</b>	
<b>Career Transition Services</b>		Center for Students with Disabilities	
Northeast Center		D119, Voice	6266
708/459-8233		TDD 708/397-7600	

## Service and Information Directory (continued)

### Dropping and Adding Courses

Academic Advising and Counseling Centers  
 I117 6522  
 D142 6393  
 Registrar's Office  
 A213 6500

### Educational Foundation

A323b 6490

### Employment—Harper College

Personnel Department  
 A322 6216

### Employment—Students

Career & Personal Development Center  
 A347 6720

### Extension Services

Northeast Center  
 708/537-8660

### Faculty Senate

A152 6960

### Friends of Harper

Media Relations  
 A314 6279

### Grade Reports

Registrar's Office  
 A213 6502

### Grants

Director of Development  
 A323b 6490

### Health Services

A362 6340

### Insurance

Personnel Department  
 A320 6217

### Intercollegiate Athletics

Coordinator, Men's Athletics  
 M225 6466

Coordinator, Women's Athletics  
 M223 6466

### International Student Advisor

F127 6226

### Intramurals

Coordinator of Intramurals  
 M222 6466

### Job Placement Service

Career & Personal Development Center  
 A347 6720

### Learning Assistance Center and Diagnostic Services

F119 6715

### Library

Library Chairperson  
 F203 6585

### Lost and Found Items

Public Safety Office  
 B101 2330, 2491

### Media Relations

A314 6279

### New Student Information

Center for New Students and Orientation  
 F132 6208

### Northeast Center

1375 South Wolf Road  
 Prospect Heights, IL 60070  
 708/537-8660

### Older Adults and Seniors

Community and Program Services  
 C102 6591

### Orientation to College

Center for New Students and Orientation  
 F132 6208

### Parking and Public Safety

Public Safety Office  
 B101, Non-Emergency 2330

Emergency only 2211

Medical Parking Permits, Health Services  
 A362 6340

### Payroll

Business Office  
 A201 6228

### PEAK

Community and Program Services  
 C102 6363

### Permission to Carry More than 18 Hours

Dean, Enrollment Services  
 A213 6303

### Program Board

Student Activities Office  
 A336 6274

### Purchasing

Business Office  
 A217 6607

### Registration—Credit Classes

Registrar's Office  
 A213 6502

### Registration—Continuing Education

CE Admissions  
 C101, 708/397-3377

### Scholarships, Loans or Other

Financial Aids  
 Financial Aid Office  
 A364 6248

### Student Activities Registration and Activities Calendar

Student Activities Office  
 A336 6242

### Student Activity Cards

Business Office  
 A214 6439

### Student Clubs and Organizations

Student Activities Office  
 A336 6242

### Student Complaints/Grievances

Vice President of Student Affairs  
 A317 6360

## Service and Information Directory (continued)

### Student Government

Student Senate Office  
A332 6244  
Student Activities Office  
A336 6242

### Telecourses

F204 6550

### Testing Information

Assessment and Testing Center  
A148 6541

### Training & Development

Personnel Department  
A302b 6847

### Transcript of Your Credits

Registrar's Office  
A213 6579

### Transfer from Another College

Center for New Students and Orientation  
F132 6208  
Registrar's Office  
A213 6600

### Transfer Scholarships

Financial Aid Office  
A364 6248

### Tuition and Fee Payment

Business Office  
A214 6439

### Tuition Refund Request

Registrar's Office  
A213 6501

### Tutoring Center

F132 6539

### Veteran's Affairs

A364 6254

### Vocation or Job Selection

Career and Personal Development Center  
A347 6720

### Weekend College/Weekend Services

Community and Program Services  
C102 6363

### Withdrawal from College

Academic Advising and Counseling Centers  
I117 6522  
D142 6393  
and Registrar's Office  
A213 6502  
Medical Withdrawal, Health Services  
A362 6340

### Women's Program

P124 6560

### Word Processing

S133 6442

### Writing Center

F303 6715



# Campus Buildings

Capital funds for the College buildings were provided through a combination of General Assembly appropriations and local construction bond issues approved by the district voters in April of 1966. By 1969, 45 percent of the construction master plan was completed. Harper College opened its doors to 5,400 students at the Palatine campus in the fall of that year.

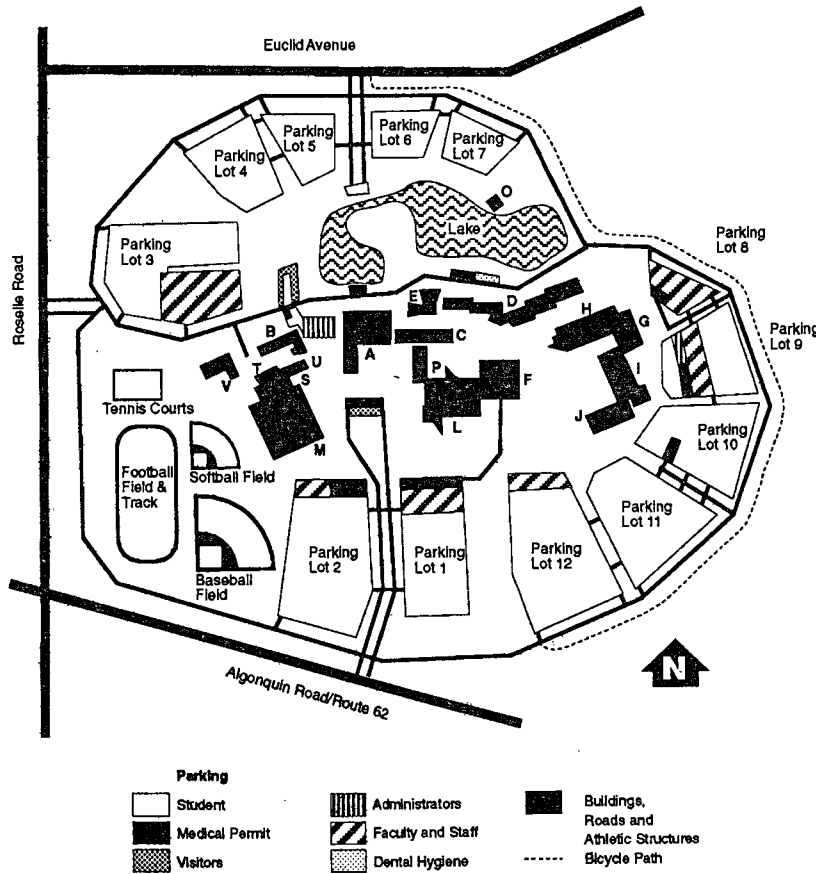
Subsequent buildings were constructed as state appropriations were made available. The physical education center (Building M) was funded through local bond issues approved in a 1975 referendum. The Observatory (Building O) was privately funded.

Buildings	Acceptance Dates	Values*	Gross Square Feet
A	1969	\$13,033,000	132,593
B	1969	1,771,000	24,419
(B Addition accepted 1984)			
C	1969	2,205,000	23,908
D	1969	12,319,000	115,903
(D Addition accepted 1974; Academic Computing Center accepted 1985)			
E	1969	1,192,000	13,040
F	1969	9,711,000	101,970
G	1977	1,530,000	19,500
H	1977	6,425,000	62,657
I	1980	4,421,000	45,611
J	1980	4,559,000	46,289
M	1980	10,029,916	97,100
O (Observatory)	1990	52,501	784
P	1974	2,340,378	26,799
S	1993	1,300,000	9,500
T	1973	358,378	6,030
U	1974	379,000	6,167
V (includes two Greenhouses)	1975	515,000	12,000
<b>Total:</b>	<b>17 buildings</b>	<b>\$72,141,173</b>	<b>744,270</b>

\*Replacement cost estimate

# William Rainey Harper College

## Campus Directory



**Building A, College Center**  
 Assessment/Testing  
 Board Room  
 Business Office  
 Career Center/Placement  
 Conference Rooms  
 Dining Rooms  
 Financial Aid  
 Food Service  
 Health Services  
 President's Office  
 Registrar  
 Student Activities

**Building B**  
 Physical Plant  
 Division Office  
 Public Safety  
 Shipping and Receiving

**Building C**  
 Admissions  
 Art, two dimensional  
 Continuing Education Information  
 Community and Program Services  
 Older Adults  
 Weekend College Services

**Building D**  
 Center for Students with  
 Disabilities  
 Dental Hygiene Clinic  
 Life Science and Human  
 Services Division Office  
 Student Development Center

**Building E, Lecture-  
 Demonstration Center**

**Building F, Learning  
 Resources Center**  
 Academic Enrichment and  
 Language Studies Division  
 Office  
 Center for New Students/  
 Orientation  
 Learning Assistance Center  
 Library  
 Media Services  
 Tutoring Center  
 Writing Center

**Building G, Vocational  
 Technology Shops and  
 Laboratories**

**Building H, Vocational  
 Technology Shops and  
 Laboratories**  
 CAD and Manufacturing  
 Center  
 Technology, Mathematics  
 and Physical Sciences  
 Division Office

**Building I, Business,  
 Social Science and  
 Vocational Education**  
 Child Care Center  
 Student Development Center

**Building J, Business,  
 Social Science and  
 Vocational Education**  
 Business and Social  
 Science Division Office  
 Theatre and Box Office

**Building L, Liberal Arts**  
 Art, three dimensional  
 Art Studios  
 Bookstore  
 Liberal Arts Classrooms  
 Liberal Arts Division Office

**Building M, Physical  
 Education, Athletics  
 and Recreation**  
 Human Performance/Cardiac  
 Rehab Labs  
 Physical Education,  
 Athletics and Recreation  
 Division Office

**Building O**  
 Observatory

**Building P**  
 Music  
 Women's Center

**Building S**  
 Publications and  
 Communication Services

**Building T**  
 Park Management  
 Roads and Grounds Shop

**Building U**

**Building V**  
 Greenhouses  
 Park Management

**Student Parking Lots 1-7,  
 9-12**

Auxiliary  
Organizations

# Harper College Educational Foundation

The Harper College Educational Foundation was established in 1973 as a non-profit organization to provide additional funding for the College. Its members are appointed by the Foundation Board, and the appointments are confirmed by the Harper College Board of Trustees. The Foundation works within the framework of goals approved by the elected Board of Trustees, which provides coordinating services for the Foundation.

The purpose of the Foundation is to support the educational mission of the College, specifically to:

1. Assist the College in providing broader educational opportunities for students, alumni, district residents and employers;
2. Acquire and administer additional assets for the College;
3. Encourage corporations, foundations and individuals to provide gifts, scholarships, grants or bequests of money or property;
4. Foster development of special instruction, research and cultural programs which cannot be funded through the operating budget of the College; and
5. Act in a fiduciary capacity to carry out any of the foregoing purposes.

**1993-94**

## **Harper College Educational Foundation Board of Directors**

### **Officers:**

Donald D. Torisky, President  
Chairman and Chief Executive Officer  
Lease Resolution Corporation

Bruce A. Mueller, President-Elect  
Vice President & Corporate Director  
of Human Resources  
Infrastructure & Technology  
Motorola, Inc.

Dudley A. Powell, Immediate Past President  
Vice President-Corporate Human  
Resources, Administration  
Allstate Insurance Company

Dr. Paul N. Thompson, Vice President  
President  
William Rainey Harper College

Felice P. Avila, Secretary  
Director of Development  
Harper College Educational Foundation

Michael A. Wolf, Treasurer  
President  
International Transportation Management, Ltd.

Larry Moats, Trustee Liaison  
President  
Arlington Electrical Construction Co., Inc.

**Members:**

Fred Barr  
(Retired)  
International Harvester Company

Donald Barrington  
Director, Human Resource Development  
Northrop Corporation

Martha A. Bell  
Owner/Principal  
Martha Bell & Associates

David J. Berger  
President  
Berger Enterprises

James Bradley  
Bradlon, Inc.

Noreen Burgeson  
President  
Burgeson & Associates

Robert J. DeRosier  
Vice President  
Northern Trust Bank

Kenneth J. Easton

R. James Harring  
(Retired) Corporate Vice President  
Motorola, Inc.

Alan Herbert  
President  
Amersham Holdings, North America

Dr. Robin M. Hoffer  
Insurance & Employee Benefits Consultant  
The Greater Chicago Group

Louis Holian  
President  
Prospect Products

John A. Hug  
Partner  
KPMG Peat Marwick

Lawrence Kaplan  
Vice President  
Coral Enterprises, Inc.

William J. Kern, Jr.  
Sr. Vice President  
Pepper Construction Company

Michael Kiss  
Vice President  
NBD Elk Grove Bank

Richard C. Kolze  
(Retired) Superintendent  
Township High School Dist. 211

Thomas MacCarthy  
President  
Suburban National Bank of Palatine

Michael Phillips  
The Reverend  
St. Philip's Episcopal Church

William E. Simpson  
Cambridge Commons Partnership

Dan T. Thomson  
President  
Cooper Lighting

# Friends of Harper

The Friends of Harper is a non-profit support organization which acts as a communication link between Harper College and the 23 communities it serves. Membership is open to any individual or group interested in furthering the mission of Harper College.

The organization is governed by a board of directors elected from the membership to represent each township in the College district. The Harper College Board of Trustees provides coordinating services for the Friends of Harper organization.

## 1993-94 Friends of Harper Board of Directors

### Officers:

Jeanette Muench, President  
Barrington

Nancy Murtaugh, Vice President  
Inverness

Donna Joy, Treasurer  
Mt. Prospect

Patty Roberts, Secretary  
Barrington

### Directors:

Mary McLaughlin  
Women's Program Representative

Sarah Born  
Liaison, Board of Trustees

Joe Marchiori  
Business and Industry  
Representative

Martha Loss  
Senior Citizen Representative

Florence Sorokin  
Senior Citizen Representative

Rev. Michael Phillips  
Liaison, Educational Foundation

Dr. Paul Thompson  
President, Harper College

Fred Barr  
Membership Representative

### Directors-at-Large:

Kathleen Amatangelo  
Barrington Hills

Jay Fritz  
Inverness

Evelyn Hunt  
Hoffman Estates

Ray Kaczmarek  
Rolling Meadows

Mary Robins  
Arlington Heights

Frank Smith  
Mount Prospect

Patsy Street  
Palatine

Don Torisky  
South Barrington

Rena Trevor  
Rolling Meadows

Teddi Williams  
Buffalo Grove

Mike Zawacke  
Arlington Heights



**William Rainey Harper College**

1200 West Algonquin Road  
Palatine, Illinois 60067-7398  
708/397-3000