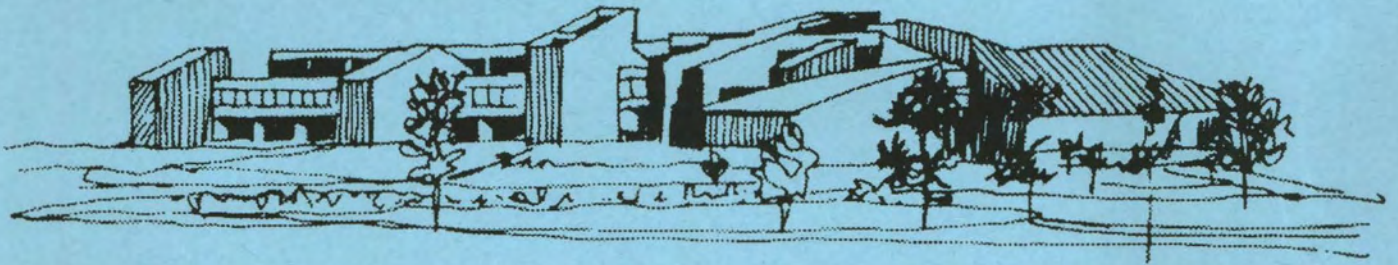


---

---

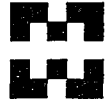
# Harper College 1995



Profile

---

---

**William Rainey Harper College**

January, 1995

Dear Members of the Harper Community:

The 1995 *Profile* is designed to provide you with facts and figures about Harper College for your own information and to communicate to others.

The student population is served by 218 faculty, 92 professional/technical, 262 classified, 41 supervisory/confidential, 78 custodial and maintenance and 36 administrative staff. A part-time faculty of 600 supplements our teaching staff. The College is governed by a Board of Trustees composed of seven members elected by the community and a student trustee elected by the students. Everyone at Harper is committed to providing quality instruction and services that respond to the needs of the residents and businesses of the district.

We hope that this publication will give you a good overview and answer many of your questions. If you have suggestions for improvement of this resource, please contact the Community Relations Department, 708/925-6279.

Sincerely,

Paul N. Thompson  
President

# Profile of Harper College 1995

## Introductory Information

- I. State Community College System
- II. Maps
- III. Academic Programs
- IV. Students
- V. College Finances
- VI. Structure and Staff
- VII. Services and Facilities
- VIII. Auxiliary Organizations

## Harper Highlights

- William Rainey Harper College was founded on March 27, 1965. The College opened its doors to students in the fall of 1967.
- The College is named after Dr. William Rainey Harper, first president of the University of Chicago and known as the father of the two-year college.
- The College is governed by an elected Board of Trustees composed of seven members and a student trustee elected by the students.
- The College encompasses 23 communities with an area of about 200 square miles and a population of 511,000.
- The campus in Palatine has 18 buildings on a total area of 200 acres.
- The tuition rate is \$36 per credit hour.
- Fall enrollment is approximately 24,000 students.
- Approximately 30 percent of the annual high school graduates in the district who go on to college attend Harper.
- More than 350,000 different students have attended Harper since it was founded.
- Approximately 83 percent of the College faculty hold postgraduate degrees.
- The Harper College Learning Resources Center has 110,955 volumes, an additional 60,000 microforms and about 831 periodical titles. The media collection of 126,537 items consists of videotapes, films, audiotapes, slides, filmstrips and other formats. **The library has a computerized, on-line catalog which can be accessed through strategically placed terminals on the first and second floors of the LRC.** The Library also provides a CD Rom information network, which gives access to several subject indexes. Through on-line searching of a national data base, the LRC has access to academic institutions nationwide, as well as to those in Illinois.
- The College operates extension centers in Barrington, Buffalo Grove, Elk Grove Village, Hoffman Estates, Palatine and Prospect Heights. The Northeast Center in Prospect Heights is the largest of these centers.
- The College offers over 70 academic scholarships each year covering tuition and fees as well as various financial grants sponsored by individuals, organizations and companies in the area which range from \$100 to \$8,000.

# Introduction

William Rainey Harper College is a two-year public community college which was founded in 1965 and officially opened classes the fall of 1967. The College offers both the associate in arts and associate in science degrees as well as an associate in applied science degree in 60 career areas. In addition, there are more than 15 one-year certificate programs which prepare men and women of all ages for immediate employment. There are numerous other programs and services such as continuing education, the CAD and Manufacturing Center, business management seminars, cultural affairs, women's program, adult educational development, support services for students with disabilities and community counseling services.

The spirit of Harper College is reflected in its name. William Rainey Harper was a scholar, teacher, writer and administrator who devoted his life to the pursuit of excellence in education. As the first president of the University of Chicago, Dr. Harper initiated programs to bring education into the community for those who could not become resident students at a university. This concept was the basis for the establishment of the community college system in the United States and the eventual founding of William Rainey Harper College.

In 1967, Harper College opened with an enrollment of about 1,700 students. Today the College's enrollment stands at approximately 24,000 students of all ages participating in degree credit, continuing education, and extension courses at the Harper campus or at other locations throughout the district.

The College has enrolled more than 350,000 students dating back to 1967 when the first classes were held. Many more area residents have come to the campus to attend forums, concerts, and cultural and athletic events.

For the many residents in the College community, Harper provides the opportunity for completing the first two years of a bachelor's degree, developing a career, learning new skills, retooling for career advancement or change, enriching the quality of one's life, or simply enjoying the discovery of new knowledge. In meeting the varied and changing educational needs of the community, Harper College continues to be a dynamic institution, a community college in the truest sense of the term.

## Mission Statement

William Rainey Harper College is a comprehensive community college dedicated to providing excellent education at a reasonable cost, promoting personal growth, enriching the community and meeting the needs of a changing world.

In the broad range of its offerings, Harper College will

- educate students to assume an active, productive and meaningful role in a free and changing society.
- provide students with the knowledge and experiences required to develop a system of values and the ability to contend with difficult moral choices.
- encourage student success.
- enrich the cultural and economic life of the community.
- lead in individual and community development.
- enable the students to recognize the interrelationships of life, education and work.

## Board of Trustees (1994-95)

Barbara Barton

Sarah Born

John E. Coste

Kris Howard

Richard C. Kolze

Lawrence Moats

Molly Norwood

William Beisiegel, Jr.

Palatine

Arlington Heights

Schaumburg

Barrington

Palatine

Inverness

Rolling Meadows

Schaumburg



**State Community  
College System**

# Illinois Community Colleges\*

Illinois community colleges comprise a dynamic system of 49 colleges whose 40 districts encompass the entire state of Illinois. While the individual community college districts vary in terms of demographics, resources and education priorities, their status as locally governed institutions allows them to address varying local needs uniquely. A major strength of the system is that colleges also work collaboratively to address regional and statewide needs in an effective and efficient manner.

Illinois community college students are diverse. Approximately 29 percent are minorities comprising nearly two-thirds of all minorities in public higher education. Nearly 10,000 persons with disabilities enroll in community colleges and 38,000 students with limited English proficiency are served annually. The average age of a community college student is 30. Seventy percent of community college students attend part-time, and many work while attending college.

## Vision Statement

It has been said, "Do not follow where the path may lead. Go instead where there is no path and leave a trail." The community college system must continue to be the educational system that "go(es) instead where there is no path and leave(s) a trail". It needs to stretch the minds of its faculty, administrators, trustees, presidents and students so that there is more room for acceptance and development of new ideas and knowledge.

Accordingly, the community college system envisions the community college as a place where:

teachers take pride in teaching, students take pride in learning and the focus is quality and excellence;

a passionate thirst for new knowledge is instilled, both in students and in staff;

society's values are shaped and revised, and leadership, integrity, self-discipline, self-motivation, humanity, dignity, pride and caring are purposefully taught and modeled;

the experiences of students are directed toward developing each of them as informed, responsible and contributing citizens and employees;

the responsibility for accountability is accepted eagerly;

expressions and manifestations of bigotry, prejudice and denigration of character are not tolerated;

no individual is considered to be inherently more important than another, and each is provided with an equal opportunity to achieve success;

actions are focused on interdependence, collaboration and inclusiveness - "community" in its broadest sense;

communities are assisted in identifying and solving problems such as substance abuse, crime, child abuse and a variety of conditions that undermine and destroy their very fiber; and

the boundaries of our communities are extended to countries around the world, and international interdependence is nurtured.

Guided by this vision and strengthened by this plan, the Illinois community college system, through its locally autonomous colleges, will provide our state and nation with their most productive supply of educated citizens.

\*Reprinted from general information published by the Illinois Community College Board.



## The Illinois Community College Board

The Illinois Community College Board consists of eleven members appointed by the Governor and one student member selected by the recognized Student Advisory Committee. Board members are appointed at large for six-year terms. The Chairman of the Board is selected by the Governor. The statutory responsibilities of the Board are planning and coordinating the programs and activities of the public community colleges. All colleges are governed by local boards of trustees.

### Illinois Public Community Colleges

College	District	Address	Telephone
Belleville Area College Joseph Cipfl, President	522	2500 Carlyle Road Belleville, IL 62221-5899	618/235-2700
Black Hawk College Judith Redwine, President	503	6600 34th Avenue Moline, IL 61265-5899	309/796-1311
Black Hawk College-East Charles Warthen, Vice President		1501 IL Hwy. 78 Kewanee, IL 61443-0489	309/852-5671
City Colleges of Chicago Ronald Temple, Chancellor	508	226 West Jackson Blvd. Chicago, IL 60606-6998	312/553-2530
Daley College Ted Martinez, Jr., President		7500 South Pulaski Road Chicago, IL 60652-1299	312/838-7500
Harold Washington College Nancy DeSombre, President		30 East Lake Street Chicago, IL 60601-2495	312/553-5600
Kennedy-King College Wayne Watson, Acting President		6800 South Wentworth Avenue Chicago, IL 60621-3799	312/962-3200
Malcolm X College Zerrie Campbell, President		1900 West Van Buren Street Chicago, IL 60612-3197	312/942-3000
Olive-Harvey College Homer Franklin, President		10001 South Woodlawn Avenue Chicago, IL 60628-1696	312/568-3700
Truman College Wallace Appelson, President		1145 West Wilson Avenue Chicago, IL 60640-5691	312/878-1700
Wright College Raymond LeFevour, President		4300 North Narraganset Chicago, IL 60634-4276	312/777-7900
Danville Area Community College Harry Braun, President	507	2000 East Main Street Danville, IL 61832-5199	217/443-1811
College of DuPage Michael T. Murphy, President	502	22nd & Lambert Road Glen Ellyn, IL 60137-6599	708/858-2800
Elgin Community College Roy Flores, President	509	1700 Spartan Drive Elgin, IL 60123-7193	708/697-1000
William Rainey Harper College Paul Thompson, President	512	1200 West Algonquin Road Palatine, IL 60067-7398	708/397-3000

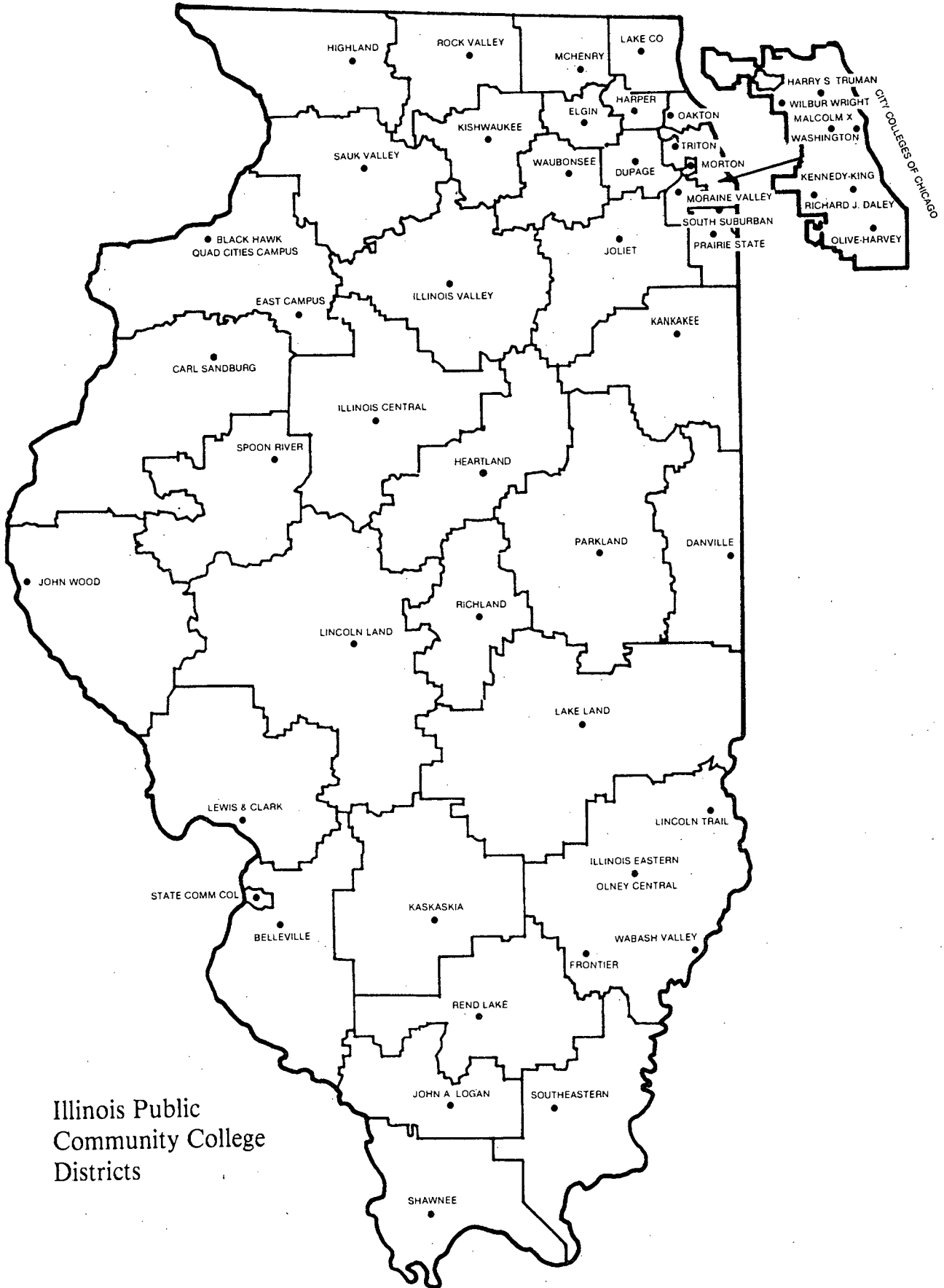
## Illinois Public Community Colleges (continued)

College	District	Address	Telephone
Heartland Community College Jonathan Astroth	540	1226 Towanda Avenue Bloomington, IL 61701	309/827-0500
Highland Community College Ruth Mercedes Smith, President	519	2998 West Pearl City Road Freeport, IL 61032-9341	815/235-6121
Illinois Central College Thomas Thomas, President	514	One College Drive East Peoria, IL 61635-0001	309/694-5011
Illinois Eastern Community Colleges Harry Smith, Chancellor	529	233 East Chestnut Street Olney, IL 62450-2298	618/393-2982
Frontier Community College Richard Mason, President		Lot 2, Frontier Drive Fairfield, IL 62837-9701	618/842-3711
Lincoln Trail College Donald Donnay, President		R.R. 3 Robinson, IL 62454-9524	618/544-8657
Olney Central College Judith Hansen, President		305 North West Street Olney, IL 62450-1099	618/395-4351
Wabash Valley College Harry Benson, President		2200 College Drive Mt. Carmel, IL 62863-2699	618/262-8641
Illinois Valley Community College Alfred Wisgoski, President	513	2578 East 350th Road Oglesby, IL 61348-1099	815/224-2720
Joliet Junior College Raymond Pietak, President	525	1215 Houbolt Avenue Joliet, IL 60436-9352	815/729-9020
Kankakee Community College Larry Huffman, President	520	P.O. Box 888, River Road Kankakee, IL 60901-0888	815/933-0345
Kaskaskia College Raymond Woods, President	501	27210 College Road Centralia, IL 62801-9285	618/532-1981
Kishwaukee College Norman Jenkins, President	523	21193 Malta Road Malta, IL 60150-9506	815/825-2086
College of Lake County Daniel LaVista, President	532	19351 West Washington Street Grayslake, IL 60030-1198	708/223-6601
Lake Land College Robert Luther, President	517	5001 Lake Land Blvd. Mattoon, IL 61938-9366	217/234-5253
Lewis & Clark Community College Dale Chapman, President	536	5800 Godfrey Road Godfrey, IL 62035-2466	618/466-3411
Lincoln Land Community College Norman Stephens, President	526	Shepherd Road Springfield, IL 62794-9256	217/786-2200
John A. Logan College Ray Hancock, President	530	Route 2 Carterville, IL 62918-9599	618/985-3741
McHenry County College Robert Bartlett, President	528	8900 U.S. Highway 14 Crystal Lake, IL 60012-2796	815/455-3700

## Illinois Public Community Colleges (continued)

College	District	Address	Telephone
Moraine Valley Community College Vernon Crawley, President	524	10900 South 88th Avenue Palos Hills, IL 60465-0937	708/974-4300
Morton College Charles Ferro, President	527	3801 South Central Avenue Cicero, IL 60650-4398	708/656-8000
Oakton Community College Thomas TenHoeve, Jr., President	535	1600 East Golf Road Des Plaines, IL 60016-1258	708/635-1600
Parkland College Zeleva Harris, President	505	2400 West Bradley Avenue Champaign, IL 61821-1899	217/351-2200
Prairie State College E. Timothy Lightfield, President	515	202 South Halsted Street Chicago Heights, IL 60411-1275	708/756-3110
Rend Lake College Mark Kern, President	521	Route 1 Ina, IL 62846-9740	618/437-5321
Richland Community College Charles R. Novak, President	537	One College Park Decatur, IL 62521-2188	217/875-7211
Rock Valley College Karl Jacobs, President	511	3301 North Mulford Road Rockford, IL 61111-5699	815/654-4250
Carl Sandburg College Donald Crist, President	518	2232 South Lake Storey Road Galesburg, IL 61401-9576	309/344-2518
Sauk Valley College Richard Behrendt, President	506	173 Illinois Route 2 Dixon, IL 61021-9110	815/288-5511
Shawnee College Jack D. Hill, President	531	Rural Route 1, Box 53 Ullin, IL 62992-9725	618/634-2242
South Suburban College Richard Fonte, President	510	15800 South State Street South Holland, IL 60473-1262	708/596-2000
Southeastern Illinois College Harry Abell, President	533	3575 College Road Harrisburg, IL 62946-9477	618/252-6376
Spoon River College Felix Haynes, President	534	Rural Route 1 Canton, IL 61520-9801	309/647-4645
State Community College Robert Randolph, President	601	601 James R. Thompson Blvd. East St. Louis, IL 62201-1101	618/583-2500
Triton College George Jorndt, President	504	2000 Fifth Avenue River Grove, IL 60171-1995	708/456-0300
Waubensee Community College John Swalec, President	516	Illinois Route 47 at Harter Road Sugar Grove, IL 60554-9799	708/466-4811
John Wood Community College Robert Keys, President	539	150 South 48th Street Quincy, IL 62301-9147	217/224-6500

# Maps



Illinois Public  
Community College  
Districts



WISCONSIN

528 McHenry

532 College of Lake County

512 Harper

535 Oakton

Truman

509 Elgin

504

Wright

City Colleges  
of Chicago  
District 508

504 Triton

Chicago Urban Skills  
Institute

Malcolm X  
Washington  
College

502 DuPage

527  
Morton

516 Waubonsee

Kennedy-King  
College

Daley  
College

Olive-Harvey

524  
Moraine Valley

525 Joliet

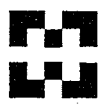
510  
South Suburban

INDIANA






**Community College Districts**

515  
Prairie State

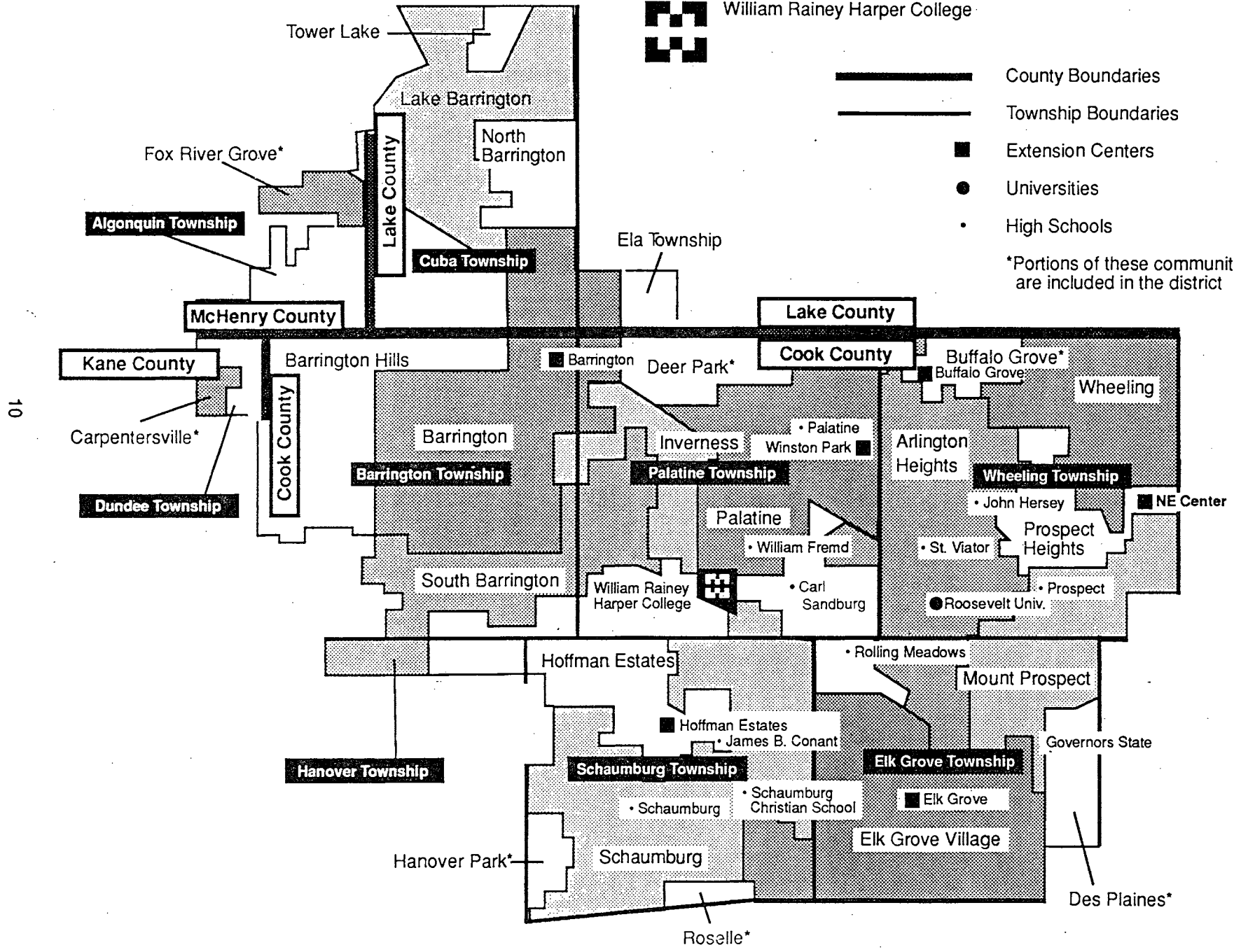
# Community College District 512



William Rainey Harper College

-  County Boundaries
-  Township Boundaries
-  Extension Centers
-  Universities
-  High Schools

\*Portions of these communities are included in the district



**Harper College serves the communities of:**

Arlington Heights  
Barrington  
Barrington Hills  
Buffalo Grove\*  
Carpentersville\*  
Deer Park\*  
Des Plaines\*  
Elk Grove Village  
Fox River Grove\*  
Hanover Park\*  
Hoffman Estates  
Inverness

Lake Barrington  
Mount Prospect  
North Barrington  
Palatine  
Prospect Heights  
Rolling Meadows  
Roselle\*  
Schaumburg  
South Barrington  
Tower Lakes  
Wheeling

\*Portions of these communities are included in the district.

**Total District Population: 511,000**

# Academic Programs

# Transfer Programs

Harper College provides programs of study allowing students to complete requirements for the first two years of a baccalaureate degree. Harper defines these programs as transfer programs. Some examples of major fields of study are as follows:

Art	Foreign Languages
Biological Sciences	Health Education
Business Administration	Liberal Arts
Communications	Music
Computer Science	Physical Education
Education	Science and Mathematics
Engineering	Social Science

# Career Programs

Harper College offers career/vocational programs. The sequence of courses is designed for individuals who desire to pursue a specific curriculum to prepare them for a particular career. Both associate degree and certificate programs are offered except where indicated.

Accounting Aide	Dental Assisting*
Accounting Clerk <sup>1</sup>	Dental Hygiene <sup>2</sup>
Accounting—Payroll, State and Local Taxes <sup>1</sup>	Dietetic Technician* <sup>2</sup>
Administrative Assistant <sup>1</sup>	Digital Electronics and Microprocessor Technology
Advertising Design and Illustration*	Early Childhood Education <sup>2</sup>
Agri-Business Service and Supply*	Early Childhood Certificates:
Agricultural Business Technology*	Before/After School Care
Architectural Technology	Early Childhood Administrator
Auto Body Repair and Painting*	Early Childhood Education Assistant Teacher
Automation Skills <sup>1</sup>	Early Childhood Education Teacher
Automotive Service Excellence*	Infant/Toddler
Automotive Technology*	Special Education Paraprofessional
Aviation Maintenance Technology*	Electronic Servicing*
Aviation Professional Pilot*	Electronic Technology
Banking, Finance and Credit <sup>1</sup>	Executive Secretarial Development
Banking and Savings Association Management <sup>2</sup>	Facilities Operation and Engineering*
Basic Addiction Counseling*	Fashion Design
Biomedical Electronics Technology*	Fashion Merchandising <sup>2</sup>
Bread and Pastry Arts <sup>1</sup>	Financial Management <sup>2</sup>
Building Codes and Enforcement <sup>1</sup>	Fire Science Technology
CAD Technician <sup>1</sup>	General Office Assistant <sup>1</sup>
CAM*	Gerontology*
Cardiac Technology <sup>2</sup>	Graphic Arts and Design*
Certified Professional Secretary <sup>1</sup>	Health Insurance Coder <sup>1</sup>
Child and Youth Advocacy*	Health Information Technology*
CNC Technician <sup>1</sup>	Hospitality Management
Commercial Credit Management <sup>2</sup>	Hotel/Motel Management*
Communication Arts and Sciences*	Human Resource Management <sup>1</sup>
Computer Information Systems—C Programming <sup>1</sup>	Human Services Management*
Computer Information Systems—Computer Operator <sup>1</sup>	Industrial Building Construction*
Computer Information Systems—Microcomputers in Business	Industrial Electrician*
Computer Information Systems—Midrange <sup>1</sup>	Industrial Supervision Technology*
Computer Information Systems—Technology	Industrial Work Management*
Criminal Justice	Insurance
Culinary Arts <sup>1</sup>	Interior Design <sup>2</sup>
	International Business
	Investment Economics and Analysis*

\*These programs are offered through cooperative agreements with other community colleges.

<sup>1</sup>Certificate program only

<sup>2</sup>Associate degree program only



## Career Programs (continued)

Journalism<sup>2</sup>  
Laser Electro-Optic\*  
Legal Secretary  
Legal Technology  
Library/Media Technology\*  
Magnetic Resonance Imaging\*  
Machine Tool, Career Advanced Program\*  
Machine Tool Operation\*  
Machine Tool Technology\*  
Machine Repair Specialist\*  
Machinist<sup>1</sup>  
Manufacturing Technology<sup>2</sup>  
Marketing<sup>2</sup>  
Materials/Logistics Management  
Mechanical Drafting<sup>1</sup>  
Mechanical Engineering Technology<sup>2</sup>  
Mechanical Maintenance/Repair\*  
Medical Laboratory Technology\*  
Medical Office Assistant  
Medical/Dental Secretary  
Medical Records Technology\*  
Medical Transcriptionist<sup>1</sup>  
Mental Health Generalist\*  
Nuclear Medicine\*  
Nursing<sup>2</sup>  
Occupational Therapy Assistant\*  
Ophthalmic Technician\*  
Park and Grounds Operation Management<sup>2</sup>  
Park and Grounds Certificates:  
    Arboriculture  
    Golf Course Management  
    Grounds Equipment Operator  
    Nursery Operations  
    Turfgrass Management  
Personal Banking<sup>1</sup>  
Pharmacy Technician<sup>1</sup>  
Photo Offset\*  
Photography\*  
Physical Therapy Assistant\*  
Plant Science Technology<sup>2</sup>  
Plant Science Certificates:  
    Floral Design  
    Garden Center Operations  
Greenhouse Operations  
Grounds Maintenance  
Landscape Design  
Master Floral Design  
Pesticide Applicator  
Plant Propagation  
Plastics Processing and Fabricating\*  
Plastics Technology\*  
Practical Nursing  
Production Engineering Technician<sup>1</sup>  
Production Management Technology\*  
Production Welding<sup>1</sup>  
Quality Assurance<sup>1</sup>  
Radiologic Technology\*  
Real Estate  
Real Estate License Preparation<sup>1</sup>  
Refrigeration and Air Conditioning  
Refrigeration and Air Conditioning Certificates:  
    Heating Service  
    Refrigeration Service  
    Refrigeration and Air Conditioning Service  
    Residential Comfort Systems  
Registered Nurse Refresher\*  
Rehabilitation Nursing\*  
Respiratory Therapy Technician\*  
Retail Merchandising<sup>1</sup>  
Secretarial  
Sign Language Interpreting  
Small Business Management  
Small Business Specialist\*  
Substance Abuse\*  
Supermarket Management\*  
Supervisory and Administrative Management  
Technical Communications\*  
Tool and Mold Maker\*  
Travel and Tourism\*  
Travel and Transportation\*  
Truck Driving\*  
Truck Driving Owner/Operator\*  
Water/Wastewater\*  
Welding\*  
Welding/Advanced\*  
Word Processing Specialist<sup>1</sup>

\*These programs are offered through cooperative agreements with other community colleges.

<sup>1</sup>Certificate program only

<sup>2</sup>Associate degree program only

## Continuing Education Programs

Continuing Education programs are an integral part of the Harper College comprehensive educational effort. They are designed to serve as lifelong learning opportunities. Programs are aimed at meeting the educational, cultural and training needs of individuals, business and industry, municipalities, professional and occupational groups. The wide range of offerings cover management training, technical training, psychological and health education needs as well as fine arts, industrial arts, home economics, horticulture and a variety of academic courses.

Each academic division offers related Continuing Education courses. The Office of Community and Program Services also offers Continuing Education courses and provides a Central Information Specialist to answer Continuing Education questions on the main campus, as well as those related to extension sites.

# Continuing Education

## **Academic Enrichment and Language Studies Division**

Adjunct Faculty Development  
Professional Development  
Test Review—Academic

## **Business and Social Science Division**

B.A.S.S.E.T. Training/Alcohol Awareness  
Certified Financial Planning  
Hospitality/Culinary  
Insurance  
Office Careers  
Personal Finance  
Real Estate  
Travel Academy  
Video Production

## **Liberal Arts Division**

Crafts  
Cultural Awareness  
Decorating and Fashion  
Fine Arts  
Languages  
Photography  
Travel and Tours  
Writing and Literature

## **Life Science and Human Services Division**

Administrative Health Professionals  
Allied Health Care Professional  
Animal/Pet Health Care  
Cardiopulmonary Resuscitation  
Care of the Disabled  
Certified Nursing Assistant  
Child Care  
Cosmetology  
Criminal Justice  
Dental Hygiene  
Dietetic Technician  
Floral  
Landscape and Garden  
Medical Office Assistant  
Nature and Biology  
Nursing  
Older/Senior Health Care  
Personal/Family Health Management  
Supervisor/Admin Health  
Vehicle, Home and Engine Maintenance

## **Student Development Division**

Career Transitions  
Women's Program  
Business and Personal Topics  
Displaced Homemaker and Single Parent Programs  
Domestic Violence Support Group  
Information and Referral Services  
Women's History Week

## **Technology, Mathematics and Physical Sciences Division**

CAD

## **Wellness and Human Performance**

Human Performance Laboratory  
Physical Education

## **Community and Program Services**

Community Services, Seminars, Workshops  
High School Cooperative  
Older Adult Programs  
P.E.A.K. (Program for Energetic and Ambitious Kids)  
Star Lab/Sciences Programs  
Travel and Learn

## **Center for Workforce and Professional Development**

Computer Training  
Institute for Management Development  
International Trade  
Material Management  
Paralegal Updates  
Sales Training  
Small Business Development  
Test Reviews - LSAT/GMAT  
Manufacturing  
UNIX Technologies

# Disciplines and Programs by Division

## **Academic Enrichment and Language Studies**

Adult Educational Development  
English as a Second Language  
Learning Assistance Center  
    College Learning Skills  
    Communication Skills  
    Diagnostic Testing  
    English (Developmental)  
    Reading  
Linguistics  
Sign Language Studies  
Sign Language Interpreting  
Tutoring Center  
Writing Center  
Continuing Education Programs

## **Business and Social Science**

Accounting Aide  
Accounting Clerk  
Accounting—Payroll, State and Local Taxes  
Administrative Assistant  
Anthropology  
Banking, Finance and Credit  
Banking and Savings Association Management  
Bread and Pastry Arts  
Business Administration  
Certified Professional Secretary  
Commercial Credit Management  
Computer Information Systems—C Programming  
Computer Information Systems—Computer Operator  
Computer Information Systems—Microcomputers in  
    Business  
Computer Information Systems—Midrange  
Computer Information Systems—Technology  
Culinary Arts  
Economics  
Education  
Executive Secretarial Development  
Financial Management  
General Office Assistant  
Geography  
History  
Hospitality Management  
Human Resource Management  
Insurance  
International Business  
Journalism  
Legal Secretary  
Legal Technology  
Marketing  
Materials/Logistics Management  
Personal Banking  
Political Science  
Psychology  
Real Estate  
Real Estate License Preparation  
Retail Merchandising  
Sales Management and Development  
Secretarial  
Small Business Management  
Supervisory and Administrative Management  
Word Processing Specialist  
Continuing Education Programs

## **Liberal Arts**

Art  
English  
Fashion Design  
Fashion Merchandising  
Fine Arts  
French  
German  
Humanities  
Interior Design  
Japanese  
Literature  
Music  
Philosophy  
Spanish  
Speech  
Continuing Education Programs

## **Life Science and Human Services**

Biology  
Criminal Justice  
Dental Hygiene  
Dietetic Technician  
Early Childhood Education  
Early Childhood Certificates:  
    Before/After School Care  
    Early Childhood Administrator  
    Early Childhood Education Assistant Teacher  
    Early Childhood Education Teacher  
    Infant/Toddler  
    Special Education Paraprofessional  
Health Insurance Coder  
Human Services  
Industrial and Retail Security  
Medical Office Assistant  
Medical/Dental Secretary  
Medical Transcriptionist  
Nursing  
    Practical Associates Degree (RN)  
Park and Grounds Operations Management  
Park and Grounds Certificates:  
    Arboriculture  
    Golf Course Management  
    Grounds Equipment Operator  
    Nursery Operations  
    Turfgrass Management  
Pharmacy Technician  
Plant Science Technology  
Plant Science Certificates:  
    Floral Design  
    Garden Center Operations  
    Greenhouse Operations  
    Grounds Maintenance  
    Landscape Design  
    Master Floral Design  
    Pesticide Applicator  
    Plant Propagation  
Continuing Education Programs

Students

**Student Development**

Career Development  
Center for Students with Disabilities  
Cooperative Work Education  
Humanistic Psychology  
Women's Program

**Technology, Mathematics and Physical Sciences**

Architectural Technology  
Astronomy  
Automation Skills  
Building Codes and Enforcement  
CAD Technician  
Chemistry  
Computer Science  
Digital Electronics and Microprocessor Technology  
Electronics Technology  
Engineering  
Fire Science Technology  
Geology  
Machinist  
Manufacturing Technology  
Mathematics  
Mechanical Drafting  
Mechanical Engineering Technology  
Physical Science  
Physics  
Production Engineering Technician  
Production Welding  
Quality Assurance  
Refrigeration and Air Conditioning  
Refrigeration and Air Conditioning Certificates:  
    Heating Services  
    Refrigeration Service  
    Refrigeration and Air Conditioning Services  
    Residential Comfort Systems  
Continuing Education Programs

**Wellness and Human Performance**

Cardiac Technology  
Health Education  
Physical Education  
Continuing Education Programs



## Facts about Harper Students

- The average age of Harper students is 33.
- Sixty-one percent of the students are women.
- Sixty-one percent of degree credit Harper students work full time while attending Harper, many of them in semi-professional or technical positions.
- Eighteen percent of Harper's degree credit students have a bachelor's degree or higher; in continuing education, 46 percent have already achieved a bachelor's degree or higher.
- Approximately one in three high school graduates in the district attend Harper within three years of leaving high school.
- Sixty-nine percent of Harper's career students become employed full time upon leaving Harper.
- Eventually 78 percent of Harper's baccalaureate oriented alumni will transfer to another college and 50 percent will achieve a bachelor's degree.
- About one out of three full-time students will complete an associate degree at Harper.
- The average income of degree credit students who are independent is about \$38,000, the average income of parents of dependent students is \$65,000, and the average income of continuing education students is \$57,000.
- Fifty-six percent of the jobs career alumni hold are closely related to their major field at Harper.
- Sixty-eight percent of Harper career alumni are working within the district, and only five and one half percent are working close to the Chicago Loop.
- More than two-thirds of Harper's degree credit students are part-time students.
- More than half of the students are persuaded to attend Harper by three principal factors. These are recommendations of friends and relatives; ability to enroll in a specific course or program desired; and Harper's convenience.

# Harper Student Profile

	1990	1991	1992	1993	1994
<b>Percent Distribution by Enrollment*</b>					
Baccalaureate	36.7	36.9	36.9	39.6	38.8
Occupational/Vocational	21.7	22.2	23.4	25.5	25.0
General Studies	4.3	4.6	3.1	-0-	-0-
Developmental	10.8	10.4	10.2	6.4	7.0
Credit Free	27.1	25.9	26.4	28.5	29.2
<b>Percent Distribution by Sex*</b>					
Male	37.4	37.3	38.2	39.9	38.8
Female	62.6	62.7	61.8	60.1	61.2
<b>Percent Distribution by Classload*</b>					
Full-time	17.9	17.0	17.8	19.9	19.3
Part-time	82.1	83.0	82.2	80.1	80.7
<b>Percent Distribution by Age*</b>					
19 and below	17.8	15.8	15.9	15.3	18.4
20-21	10.0	10.2	9.8	11.2	9.9
22-25	12.8	13.1	13.8	14.7	13.4
26-35	25.6	25.4	25.0	25.2	23.6
36-45	16.6	17.0	17.2	16.3	17.0
46-55	9.4	9.5	9.7	9.3	10.8
Over 55	7.8	9.0	8.6	8.0	6.9
<b>Percent Distribution by Ethnic Description</b>					
Asian		5.9	7.2	5.8	7.5
Native American		.2	.3	.2	.2
Black		1.7	2.0	1.8	2.0
Hispanic		8.9	11.9	11.7	8.9
White		82.5	78.2	79.0	80.8
Foreign		.8	.4	1.5	.6
<b>Percent with Bachelor's Degree or Higher Prior to Enrolling at Harper**</b>					
	10.3	14.4	18.9	18.2	
<b>Percent Employed Full Time**</b>					
	62.9	59.8	59.8	61.3	
<b>Percent Employed as Manager, Executive, or Professional**</b>					
	10.8	14.9	13.8	19.6	

\*Includes all students

\*\*Credit students

# Enrollment

## Comparison of 1992, 1993 and 1994 Fall Enrollments by Division

Division or Organizational Unit	Full-Time Equivalent (FTE) <sup>1</sup>		
	1992	1993	1994
Academic Enrichment and Language Studies	1083.5	1015.7	979.0
Business and Social Science	2891.2	2750.6	2568.6
Technology, Math and Physical Sciences	1593.8	1567.0	1523.8
Liberal Arts	2083.4	2008.8	1965.1
Life Science and Human Services	1094.6	1064.1	1100.0
Student Development (includes Women's Program)	76.5	99.1	95.4
Wellness and Human Performance	355.9	353.2	352.9
Workforce and Professional Development and Community Services	<u>26.6</u>	<u>41.0</u>	<u>152.4</u>
<b>Totals</b>	<b>9205.5</b>	<b>8899.5</b>	<b>8670.2</b>

## Student-Faculty Ratio

Fall Credit FTE Students		FTE Faculty	Ratio
1988	7833	495.1	15.8
1989	8091	363.0	22.3
1990	7915	366.7	21.6
1991	8312	419.0	19.8
1992	8489	436.5	19.4
1993	8221	460.0	17.9
1994	8154	463.0	17.6

## Transfer and Career Program Enrollment by Divisions

	Transfer (FTE)			Career (FTE)		
	Fall 1992	Fall 1993	Fall 1994	Fall 1992	Fall 1993	Fall 1994
Academic Enrichment and Language Studies	150.4	135.6	118.2	102.5	102.9	108.9
Business and Social Science	2007.1	1982.2	1863.9	710.6	611.3	600.6
Technology, Math and Physical Sciences	1152.3	1134.0	1110.6	245.2	204.8	207.1
Liberal Arts	1823.6	1791.4	1744.3	108.1	115.9	109.0
Life Science and Human Services	458.9	493.5	475.6	477.8	463.7	492.4
Student Development	155.8	156.8	149.6	9.9	21.0	20.6
Wellness and Human Performance	70.0	83.5	83.6	-0-	1.5	-0-

<sup>1</sup>Full-time Equivalent (FTE) is the number of 15-credit hour loads represented by the total number of credit hours for which students are enrolled.

# College Finances

# Funding for Harper

Harper College operating revenue (Education and Building Funds) comes from three major sources: student tuition, local taxes and state apportionment.

## Student Tuition

The Board of Trustees annually establishes tuition for credit courses which is limited by law to one-third of the per capita cost. The current resident tuition is \$36 per semester hour.

Tuition and fees for courses of a non-credit nature (courses which do not lead to a state-approved degree or certificate) cover the cost of instruction. No state or local tax monies are used to support these courses.

For 1994-95, tuition revenue is expected to be \$9,661,075 which represents 19.71 percent of Harper College's operating fund income.

## Local Taxes

All real estate property tax in the State of Illinois is used as the basis by which local educational institutions, under the authority of the law, determine the amount of tax revenue that can be made available to them. The tax rate is based on a percentage of the College district's equalized assessed valuation.

For 1994-95, the anticipated revenue from local taxes is \$29,381,021 which represents 59.92 percent of Harper College's total operating fund income.

## State Apportionment

The state funding formula is the method used to channel state money to the individual schools. The formula is cost-based and the money is distributed on the basis of enrolled students. The formula determines how much is needed to operate all the colleges for a year. The resource requirements are determined by using the actual enrollment from the prior two years, the unit cost (how much it cost per student two years past), and an adjustment for inflation in the areas of salaries, utilities, library materials and general costs plus other identified special needs. Then all local tax revenue is subtracted, and the state apportionment is supposed to be the amount remaining.

The bulk of this money is distributed through credit hour grants in seven instructional categories: Baccalaureate, Business, Technical Health, Remedial/Developmental, Adult Basic Education and General Studies. The College also receives money for grants to fund programs for disadvantaged students on a credit hour basis.

For 1994-95, state apportionment totals \$6,287,541 which represents 12.82 percent of the College's total operating fund income.

## Others

In addition to these major sources, Harper College obtains some revenue from student fees, chargebacks, interest on investments, sales and service fees, various federal and state grants, and corporate tax.

For 1994-95, the total revenue from these sources is \$3,701,410 which represents 7.55 percent of the College's total income.



# Harper College Budget

## **The Budget Process**

The budget is more than a statistical tabulation of numbers that show anticipated revenue and expenditures. It is the financial interpretation of the ongoing educational program for one year beginning July 1 and ending June 30.

Budget planning is a continuous process designed to culminate in the development of a budget that accurately expresses the district's educational program for one year.

Evaluation of the budget at the end of a fiscal year must include an appraisal of the educational program and the total operation of the College.

## **Budget Philosophy**

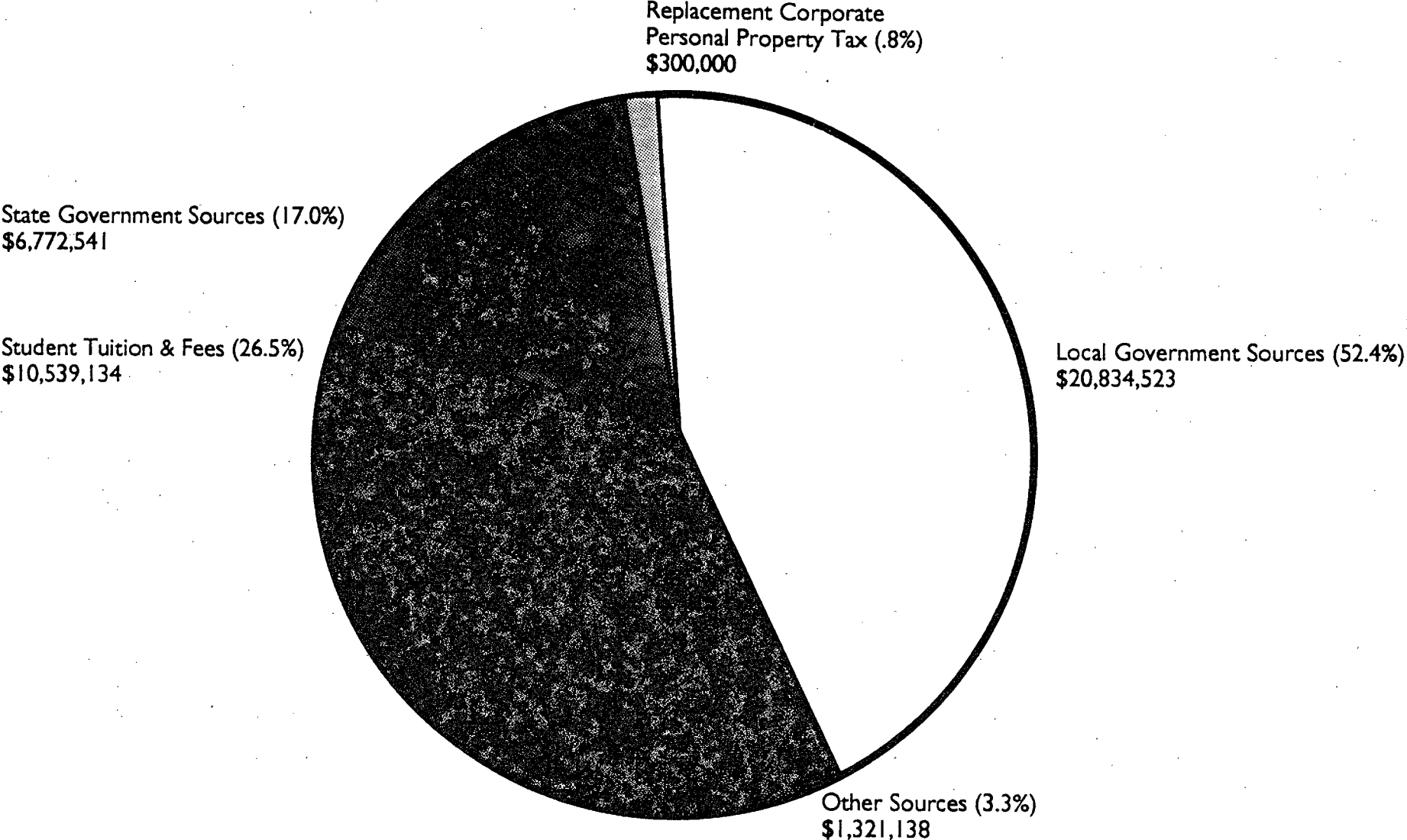
One of the cornerstones of William Rainey Harper College's philosophy is the commitment to involve faculty and students in the development and operation of the College. The sharing of authority requires a commensurate sharing of responsibility by the individuals or groups involved. The advisory role of the faculty and students is limited only by the ability of these groups to analyze problems and present recommendations to the administration and Board of Trustees. The basis for this philosophy is the belief that the democratic process will ensure that Harper College continues to evolve as an outstanding community college.

Based upon this institutional philosophy, a budget philosophy has been developed that involves the faculty, cost center managers and administration in the budget formulation and assigns responsibility to those who share in the authority to implement the budget. The following guidelines have been established:

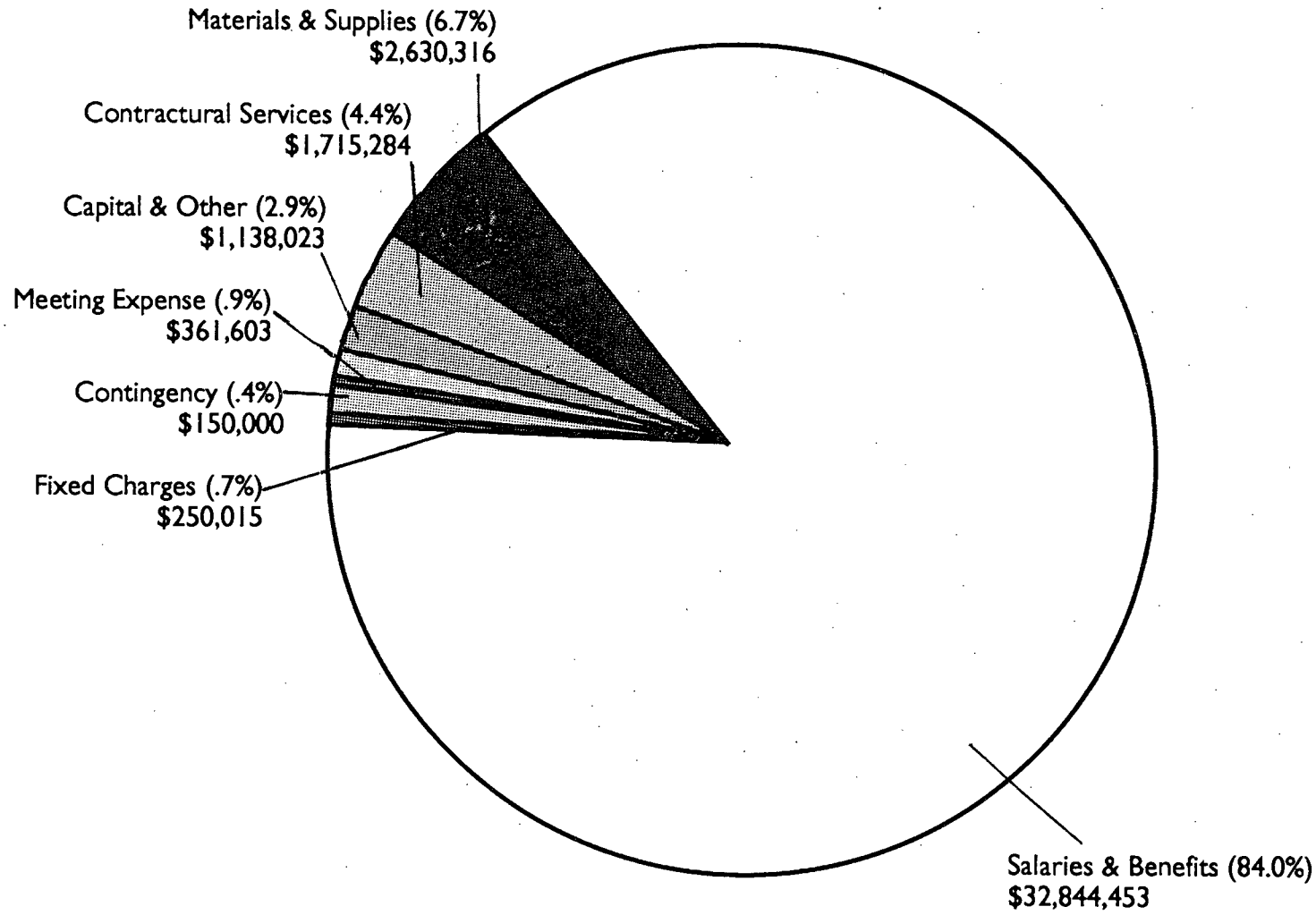
1. The final authority for the adoption of the budget rests with the Board of Trustees and is based upon the recommendation of the President.
2. The President, in consultation with the four vice presidents, is responsible for balancing expenditures for programs within the framework of the budget, based on overall institutional goals.
3. The Vice President of Administrative Services is responsible for the formulation, operation, and control of the adopted budget.
4. In order to obtain faculty and cost center manager involvement, the budget has been decentralized along organizational lines. A decentralized budget places responsibility at the operational level for budgetary planning. A given cost center manager is in the best position to set priorities for efficient operation based upon operating experience. As the budget formulation progresses and reductions are made collectively by all concerned in order to balance the budget, each manager becomes familiar with the operation of all cost centers that in total make up the budget. The result is a budget that faculty and cost center managers have agreed upon, can understand and therefore can support. Thus, budget formulation proceeds along organizational lines until it is legally adopted by the Board of Trustees.

5. While the business office is responsible for the overall control of the budget, individual cost centers are responsible for their estimates and subsequent expenditures. All expenditures initiated by the individual cost centers must receive approval through organizational lines of authority.
6. All expenditures must conform to the policies of the Board of Trustees.

Education Fund Budget 1994-95  
Estimated Revenue

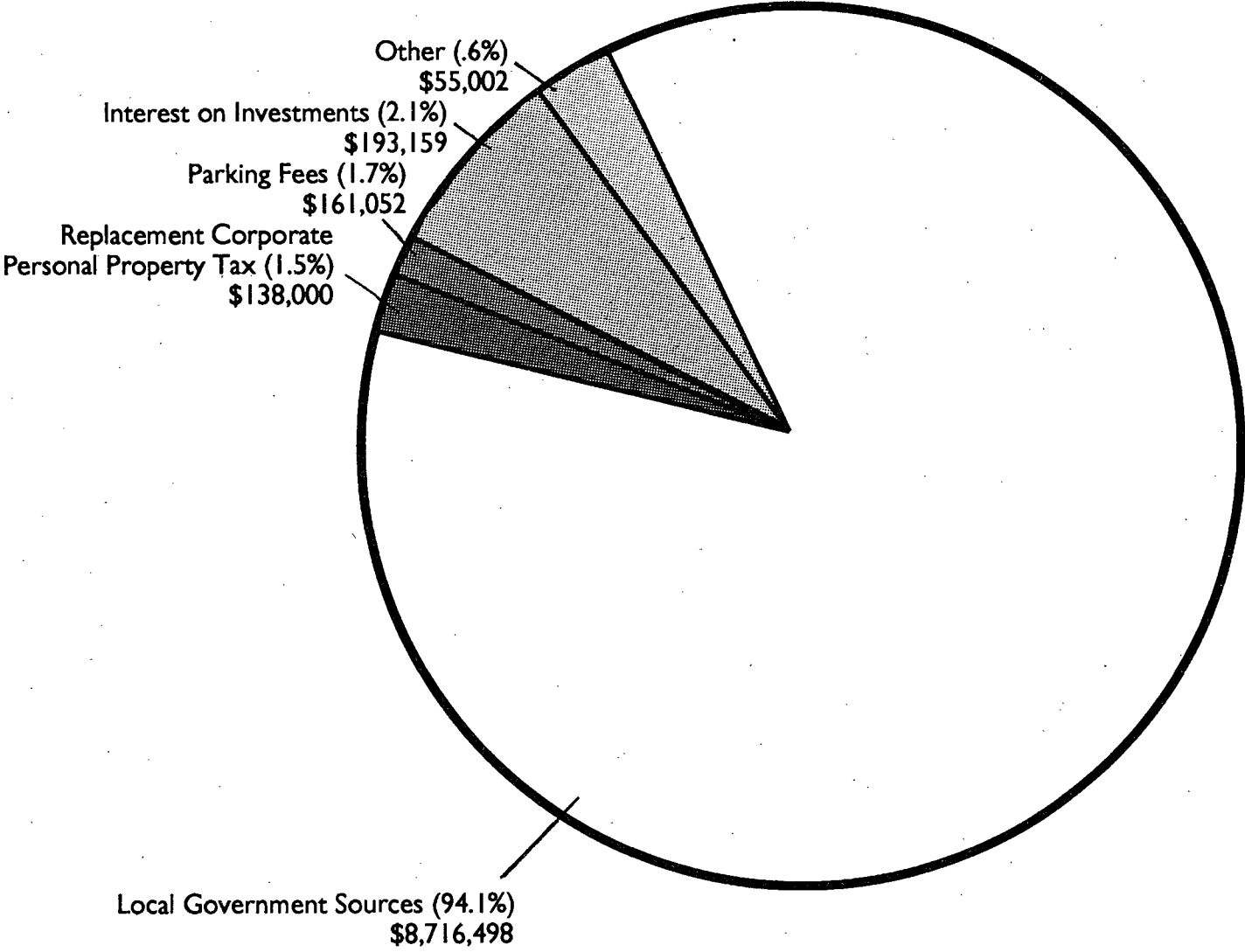


# Education Fund Budget 1994-95 Expenditures



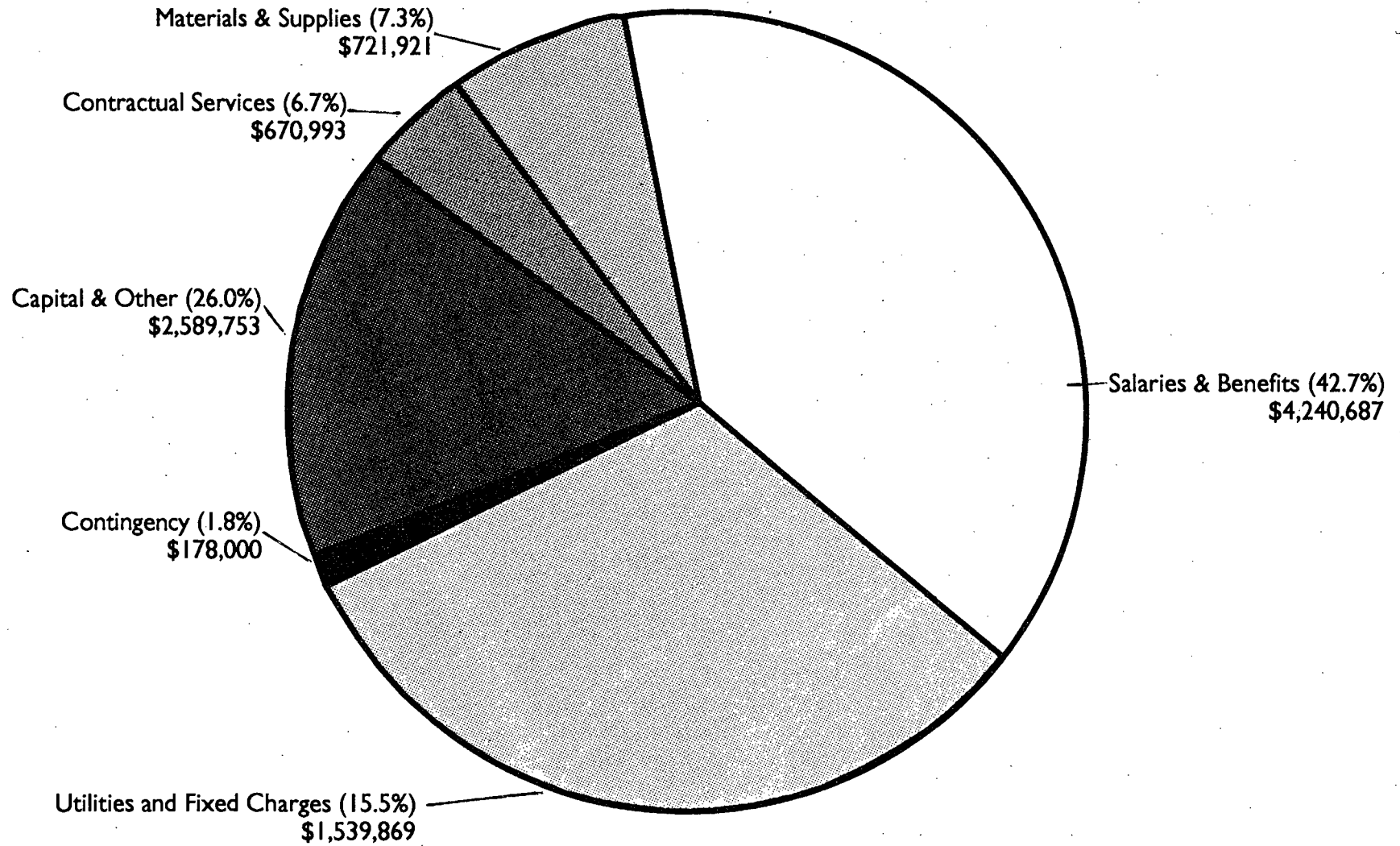
# Operations and Maintenance Fund Budget 1994-95

## Estimated Revenue





# Operations and Maintenance Fund Budget 1994-95 Expenditures

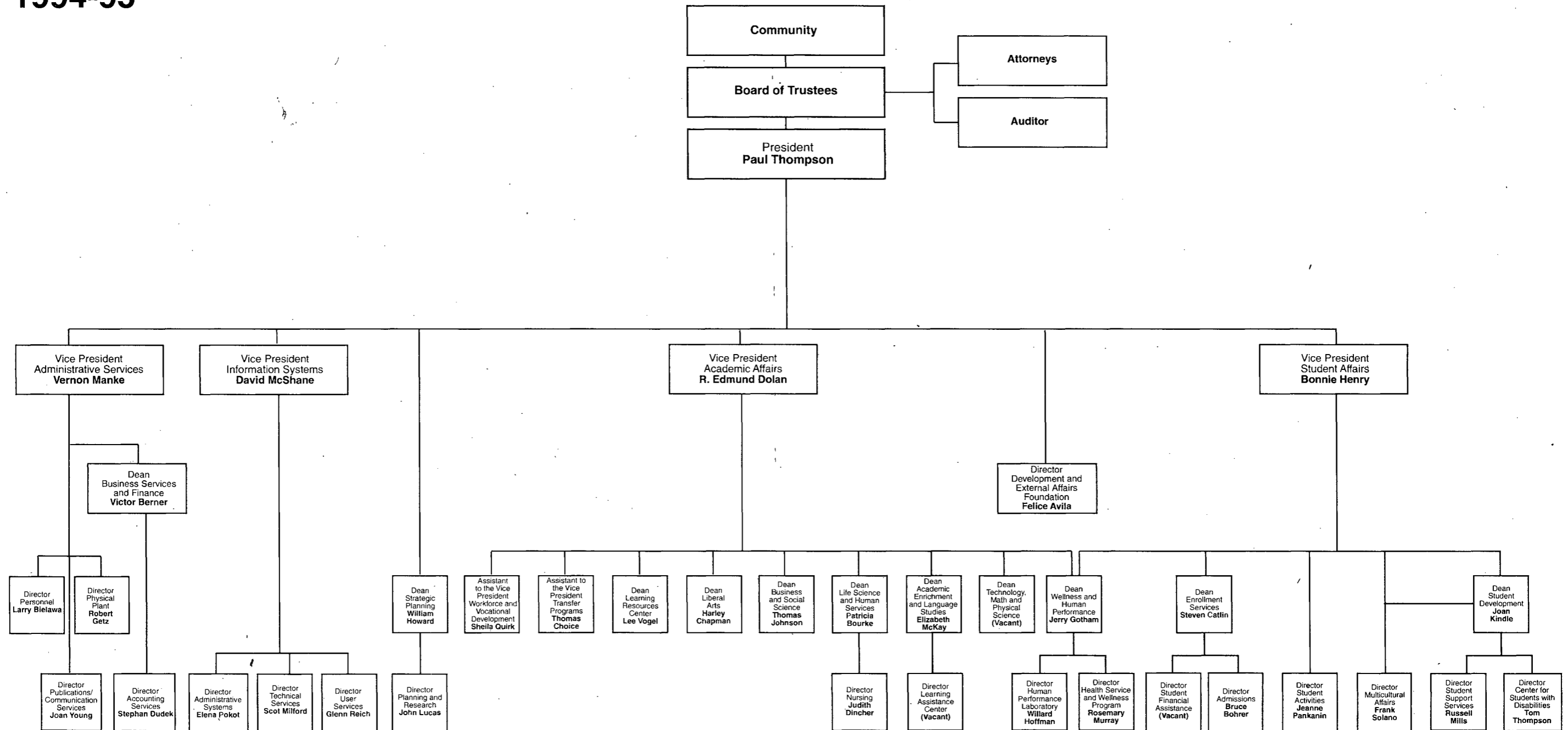


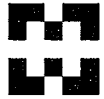
Organizational Structure  
and Staff

# William Rainey Harper College

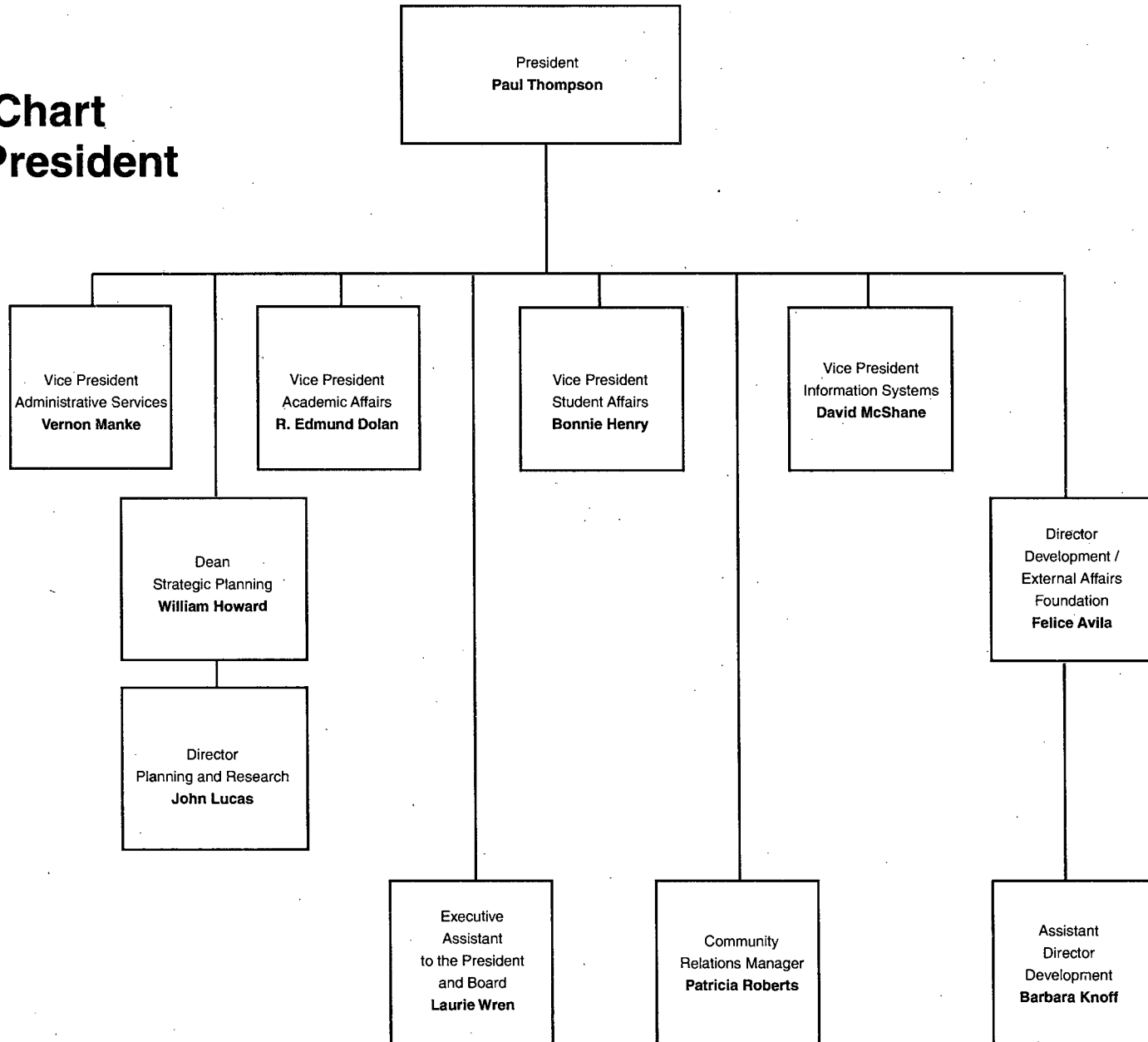


## Administrative Organization Chart 1994-95





# Organization Chart Office of the President 1994-95

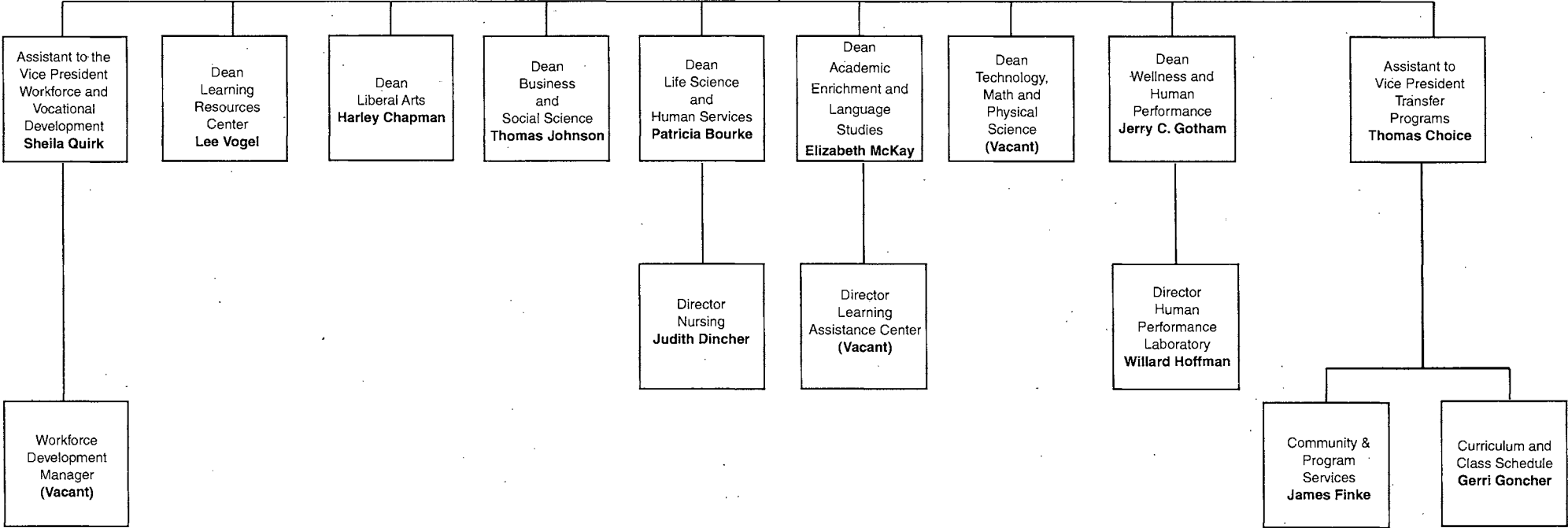




# Organization Chart Office of Academic Affairs 1994-95

Vice President  
Academic Affairs  
**R. Edmund Dolan**

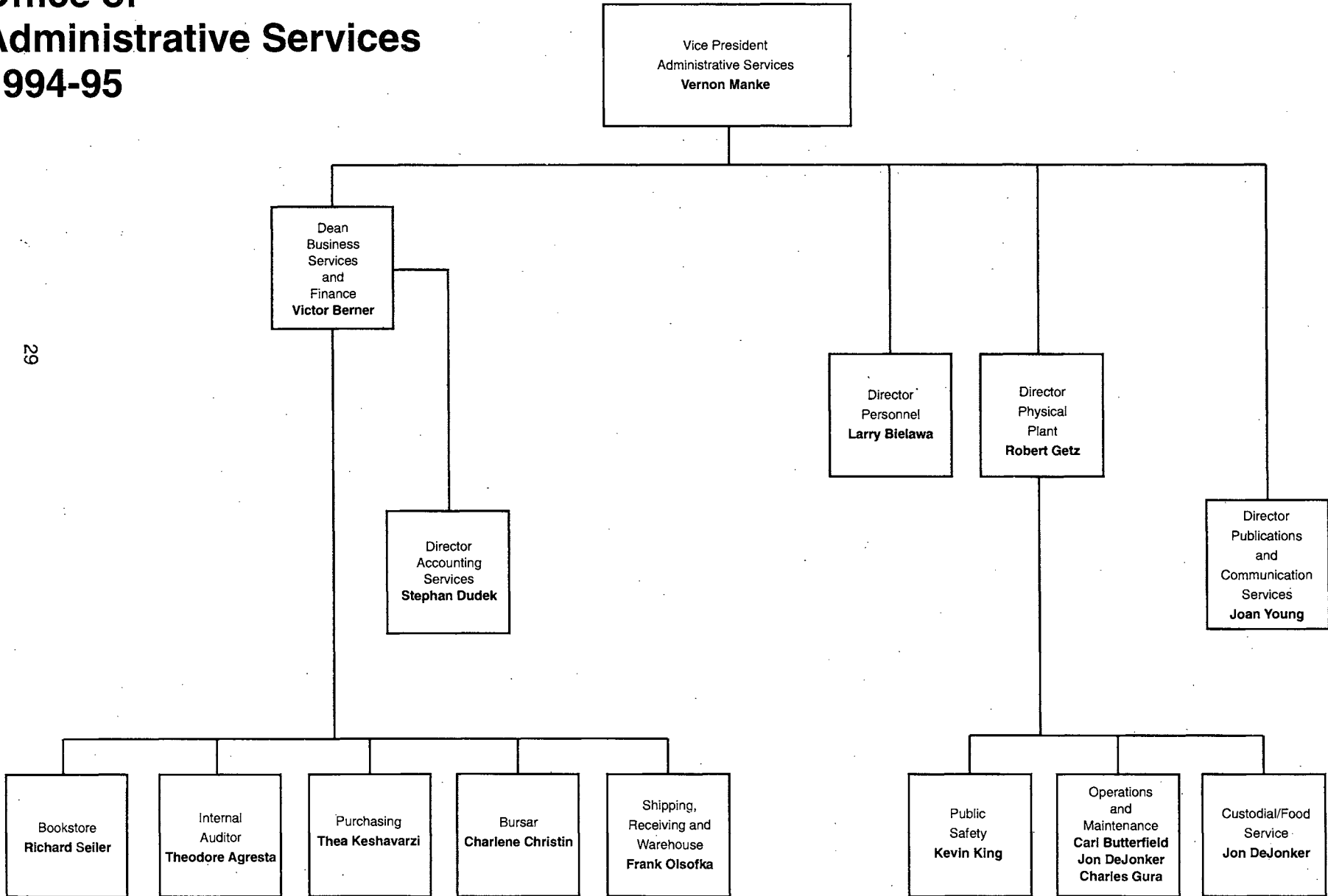
28

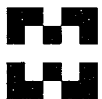






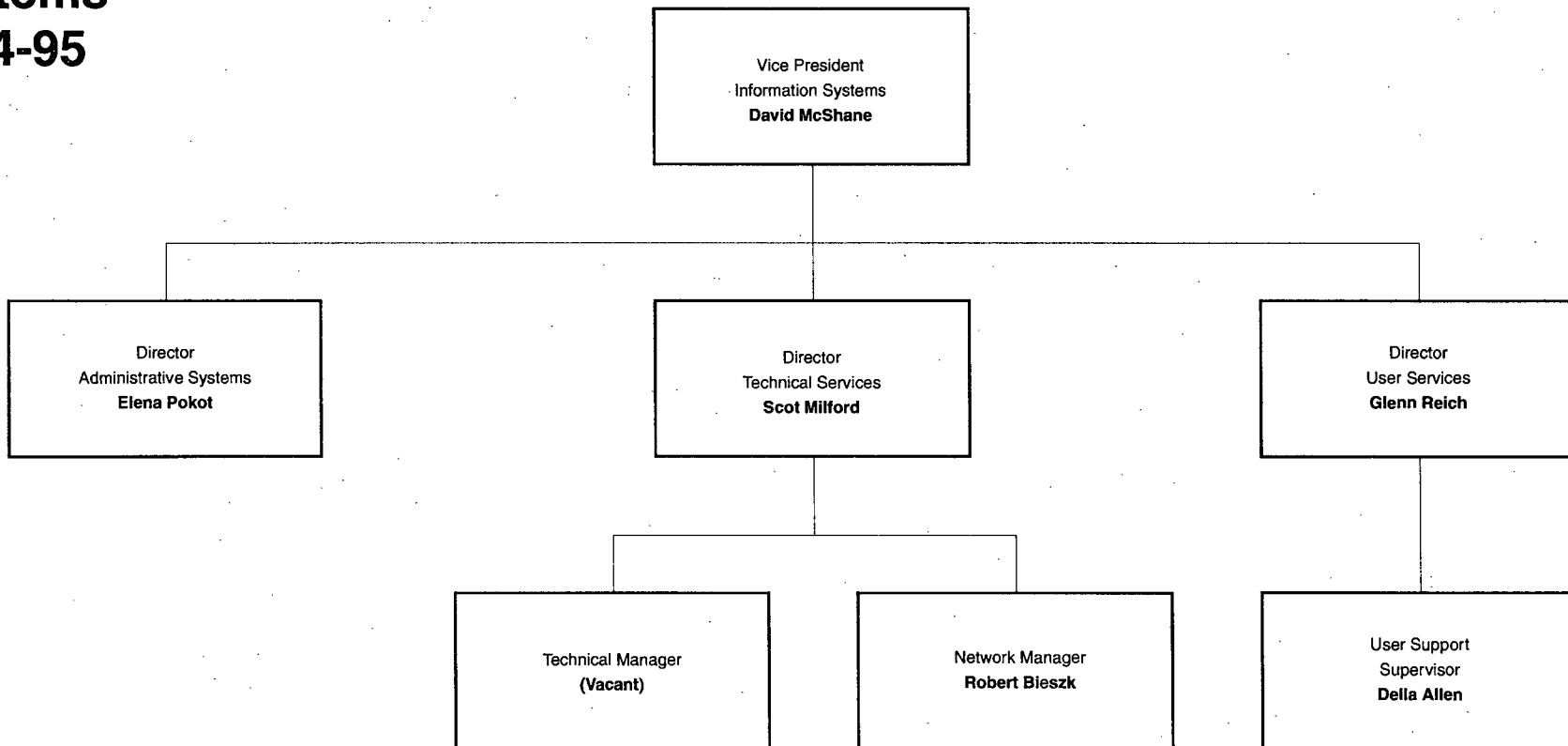
# Organization Chart Office of Administrative Services 1994-95

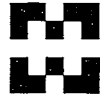




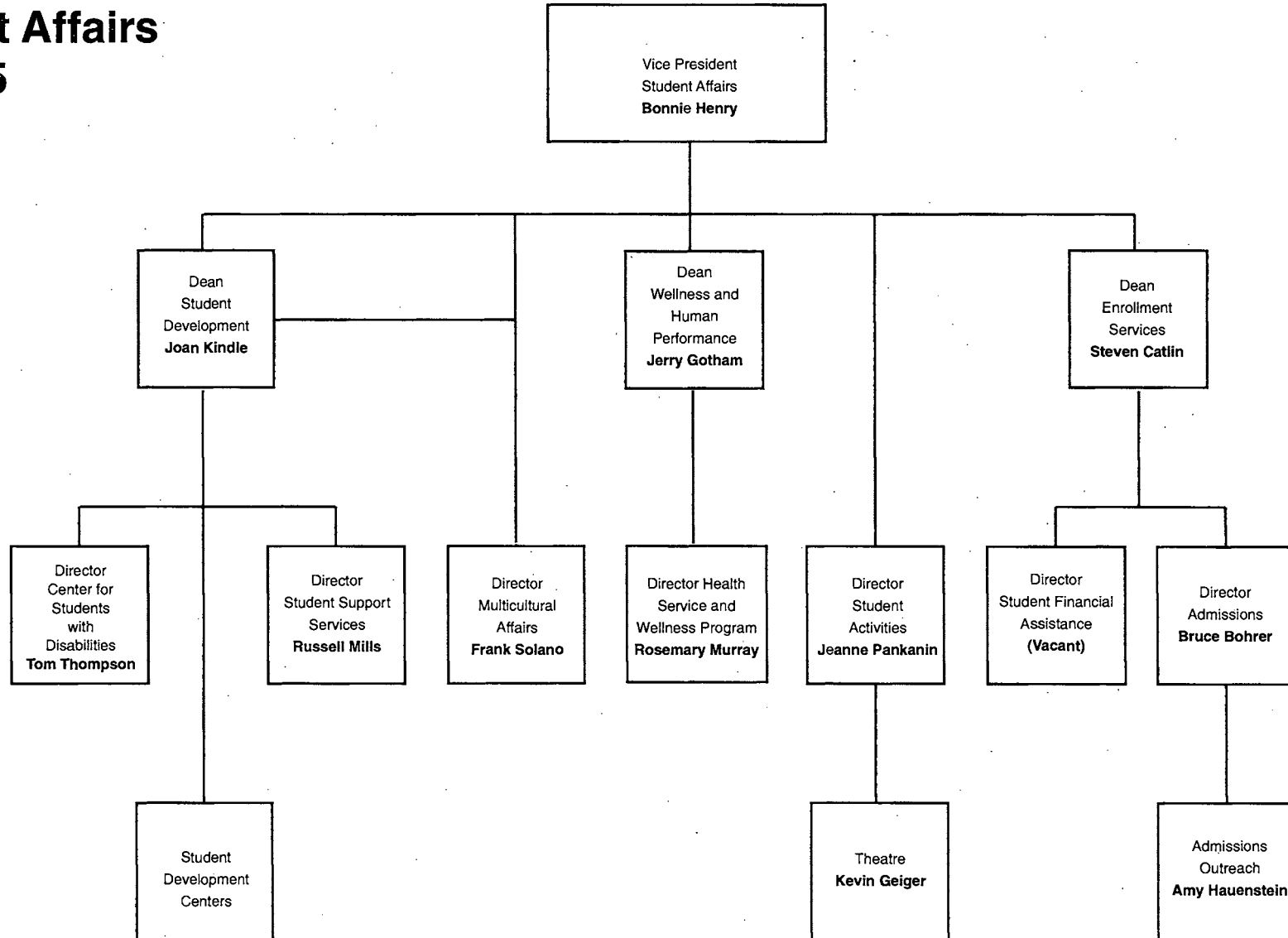
**Organization Chart  
Office of  
Information  
Systems  
1994-95**

30





# Organization Chart Office of Student Affairs 1994-95



## **General Administration**

Paul N. Thompson, President  
R. Edmund Dolan, Vice President of Academic Affairs  
Bonnie Henry, Vice President of Student Affairs  
Vernon F. Manke, Vice President of Administrative Services  
David McShane, Vice President, Information Systems  
William Howard, Dean of Strategic Planning  
Felice P. Avila, Director of Development  
John A. Lucas, Director of Planning and Research

## **Academic Affairs**

Thomas Choice, Assistant to the Vice President of Academic Affairs for  
Transfer Programs  
Patricia G. Bourke, Dean of Life Science and Human Services  
J. Harley Chapman, Dean of Liberal Arts  
Vacant, Dean of Technology, Mathematics, and Physical Science  
Jerry C. Gotham, Dean of Wellness and Human Performance  
Thomas Johnson, Dean of Business and Social Science  
Elizabeth R. McKay, Dean of Academic Enrichment and Language Studies  
Lee Vogel, Dean of Learning Resources Center  
Judith Dincher, Director of Nursing  
Willard Hoffman, Director of Human Performance Laboratory  
Sheila Quirk, Assistant to the Vice President of Academic Affairs for  
Workforce and Vocational Development

## **Administrative Services**

Victor E. Berner, Dean of Business Services and Finance  
Larry M. Bielawa, Director of Personnel  
Robert Getz, Director of Physical Plant  
Stephan Dudek, Director of Accounting Services  
Joan Young, Director of Publications and Communication Services

## **Information Systems**

Scot Milford, Director of Technical Services  
Elena Pokot, Director of Administrative Systems  
Glenn Reich, Director of User Services

## **Student Affairs**

Steven J. Catlin, Dean of Enrollment Services  
Joan Kindle, Dean of Student Development  
Bruce Bohrer, Director of Admissions  
Vacant, Director of Student Financial Assistance  
Russell S. Mills, Director of Student Support Services  
Rosemary Murray, Director of Health Service and Wellness Program  
Jeanne A. Pankanin, Director of Student Activities  
Frank J. Solano, Director of Multicultural Affairs  
Tom Thompson, Director of Center for Students with Disabilities

## Number of Employees

### Full-time:

Administrators	36
Faculty	218
Classified Staff	189
Professional/Technical	68
IEA/NEA	74
Supervisory/Confidential	<u>38</u>
	623

### Part-time:

Faculty	600
Classified Staff	73
Professional/Technical	24
IEA/NEA	4
Supervisory/Confidential	3
Temporary	186
Student Aides	<u>187</u>
	1077

## Harper College Staff Organizations

### Faculty Senate

President, George Evans  
Vice President, Dennis Brennen  
Secretary, Janet Friend Westney  
Treasurer, Salah Falouji  
Grievance Chairperson, Karen Keres

### Classified Employee Council

Chairperson, Bill Neumann  
Vice Chairperson, Charlene Christin  
Secretary, Pam Frye  
Representatives: Alan Gann  
                  Lorel Kelson  
                  Jeanne Kline  
                  Betty Nozicka  
                  Shirley Shetka  
                  Nancy Wahl



Services and  
Facilities

# Service and Information Directory

**College Hours:** Offices are open for business Monday through Friday from 8:00 am to 4:30 pm. The Registrar's and Business Offices are open from 8:00 am until 8:00 pm Monday through Thursday, from 8:00 am until 4:30 pm on Friday and from 9:00 am until 12:00 noon on Saturday. Operating hours may differ during summer and vacation periods.

**Class Hours:** Classes are scheduled Monday through Friday from 7:00 am until 11:00 pm, Saturday from 7:00 am until 6:00 pm and Sunday from 1:00-6:00 pm.

<u>DID Number (direct dial)</u>	<u>925-</u>	<u>DID Number</u>	<u>925-</u>
<b>Academic Advising and Counseling Centers</b>		<b>Cashier-Tuition and Fee Payments Business Office</b>	
I117	6522	A214	6439
D142	6393	<b>Center for New Students and Orientation</b>	
<b>Academic Regulations</b>		C104	6208
Vice President of Academic Affairs		<b>Center for Students with Disabilities</b>	
D129	6370	D119	6266
<b>Admissions/Applications</b>		<b>Child Care Service, Child Learning Center</b>	
Admissions Office		I131 (office I129)	6262
C101	6700	<b>College Newspaper Harbinger</b>	
<b>Adult Educational Development</b>		A367	6460
F338	6223	<b>Community and Program Services</b>	
Northeast Center		C102	6591
708/537-5420		<b>Community Education Non-Credit Offerings</b>	
<b>Affirmative Action</b>		Community and Program Services	
Personnel Director		C102 (information)708/397-3377	
A320	6216	Registration	6591
<b>Americans with Disabilities Act (ADA) and Section 504 of the Rehabilitation Act of 1973—Compliance Officer</b>		<b>Community Relations</b>	
Dean of Academic Enrichment and Language Studies		A314	6279
F332G	6204	<b>Cooperative Education</b>	
<b>Assessment and Testing Center</b>		A347	6720
A148	6541	<b>Corporate Services</b>	
<b>Athletic Advisor/Counselor</b>		A317	6668
M202a	6680	<b>Counseling</b>	
<b>Board of Trustees</b>		Community Counseling Center	
Office of the President		A347	6577
A309	6390	Academic Advising	
<b>Box Office</b>		I117	6522
J137	6100	D142	6393
<b>CAD and Manufacturing Center</b>		Career	
H209a	6996	A347	6220
397-1640		Center for New Students and Orientation	
FAX: 708/397-1810		C104	6208
<b>Cardiac Rehabilitation</b>		Personal/Crisis	
Northwest Cardiac Rehabilitation Center		A347	6577
M215	6486	<b>Credits or Graduation Requirements</b>	
<b>Career Center</b>		Registrar's Office	
A347	6220	A213 Student Development Faculty	6600
<b>Career Transition Services</b>		<b>Deaf &amp; Hard-of-Hearing Support Services</b>	
Northeast Center		Center for Students with Disabilities	
708/459-8233		D119, Voice	6266
		TDD 708/397-7600	

## Service and Information Directory (continued)

<b>Dropping and Adding Courses</b>		<b>New Student Information</b>	
Academic Advising and Counseling Centers		Center for New Students and Orientation	
I117	6522	F132	6208
D142	6393	<b>Northeast Center</b>	
Registrar's Office		1375 South Wolf Road	
A213	6500	Prospect Heights, IL 60070	
<b>Educational Foundation</b>		708/537-8660	
A323b	6490	<b>Older Adults and Seniors</b>	
<b>Employment—Harper College</b>		Community and Program Services	
Personnel Department		C102	6591
A322	6216	<b>Orientation to College</b>	
<b>Employment—Students</b>		Center for New Students and Orientation	
Career Center		C104	6208
A347	6720	<b>Parking and Public Safety</b>	
<b>Extension Services</b>		Public Safety Office	
Northeast Center		B101, Non-Emergency	2330
708/537-8660		Emergency only	2211
<b>Faculty Senate</b>		Medical Parking Permits, Health Services	
A152	6960	A362	6340
<b>Friends of Harper</b>		<b>Payroll</b>	
Community Relations		Business Office	
A314	6279	A201	6228
<b>Grade Reports</b>		<b>PEAK</b>	
Registrar's Office		Community and Program Services	
A213	6502	C102	6363
<b>Grants</b>		<b>Permission to Carry More than 18 Hours</b>	
Director of Development		Dean, Enrollment Services	
A323b	6490	A213	6303
<b>Health Service</b>		<b>Program Board</b>	
A362	6340	Student Activities Office	
<b>Insurance</b>		A336	6274
Personnel Department		<b>Purchasing</b>	
A320	6217	Business Office	
<b>Intercollegiate Athletics</b>		A217	6607
Coordinator, Men's Athletics		<b>Registration—Credit Classes</b>	
M225	6466	Registrar's Office	
Coordinator, Women's Athletics		A213	6502
M223	6466	<b>Registration—Continuing Education</b>	
<b>International Student Advisor</b>		CE Admissions	
F340D	6226	C101, 708/397-3377	
<b>Intramurals</b>		<b>Scholarships, Loans or Other</b>	
Coordinator of Intramurals		<b>Financial Assistance</b>	
M222	6466	Office of Student Financial Assistance	
<b>Job Placement Service</b>		A364	6248
Career Center		<b>Student Activities Registration</b>	
A347	6720	<b>and Activities Calendar</b>	
<b>Learning Assistance Center and</b>		Student Activities Office	
<b>Diagnostic Services</b>		A336	6242
F332	6715	<b>Student Activity Cards</b>	
<b>Library</b>		Business Office	
Library Chairperson		A214	6439
F203	6585	<b>Student Clubs and Organizations</b>	
<b>Lost and Found Items</b>		Student Activities Office	
Public Safety Office		A336	6242
B101	2330, 2491	<b>Student Complaints/Grievances</b>	
		Vice President of Student Affairs	
		A317	6360

## Service and Information Directory (continued)

### Student Government

Student Senate Office  
A332 6244  
Student Activities Office  
A336 6242

### Telecourses

F204 6550

### Testing Information

Assessment and Testing Center  
A148 6541

### Training & Development

Personnel Department  
A302b 6847

### Transcript of Your Credits

Registrar's Office  
A213 6579

### Transfer from Another College

Center for New Students and Orientation  
F132 6208  
Registrar's Office  
A213 6600

### Transfer Scholarships

Office of Student Financial Assistance  
A364 6248

### Tuition and Fee Payment

Business Office  
A214 6439

### Tuition Refund Request

Registrar's Office  
A213 6501

### Tutoring Center

F315 6539

### Veteran's Affairs

A364 6254

### Vocation or Job Selection

Career Center  
A347 6720

### Weekend College/Weekend Services

Community and Program Services  
C102 6363

### Withdrawal from College

Academic Advising and Counseling Centers  
I117 6522  
D142 6393  
and Registrar's Office  
A213 6502  
Medical Withdrawal, Health Service  
A362 6340

### Women's Program

P124 6560

### Word Processing

S133 6442

### Writing Center

F303 6715

## Campus Buildings

Capital funds for the College buildings were provided through a combination of General Assembly appropriations and local construction bond issues approved by the district voters in April of 1966. By 1969, 45 percent of the construction master plan was completed. Harper College opened its doors to 5,400 students at the Palatine campus in the fall of that year.

Subsequent buildings were constructed as state appropriations were made available. The physical education center (Building M) was funded through local bond issues approved in a 1975 referendum. The Observatory (Building O) was privately funded.

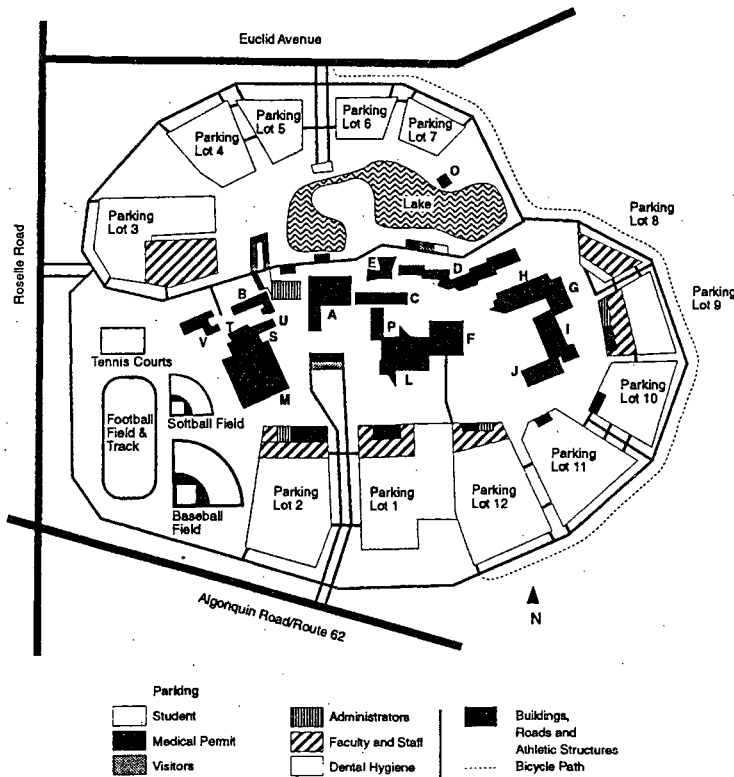
Buildings	Acceptance Dates	Values*	Gross Square Feet
A	1969	\$15,566,076	132,593
B	1969	1,997,196	24,419
(B Addition accepted 1984)			
C	1969	2,574,177	23,908
D	1969	15,095,181	115,903
(D Addition accepted 1974; Academic Computing Center accepted 1985)			
E	1969	1,548,506	13,040
F	1969	11,474,918	101,970
G	1977	1,800,746	19,500
H	1977	7,416,379	62,657
I	1980	5,058,497	45,611
J	1980	5,368,214	46,289
L	1994	9,772,134	88,860
M	1980	11,770,926	97,100
O (Observatory)	1990	54,297	784
P	1974	2,637,725	26,799
S	1993	1,465,166	9,500
T	1973	412,933	6,030
U	1974	469,375	6,167
V (includes two greenhouses)	1975	745,550	12,000
Northeast Center	1994	<u>2,000,000</u>	<u>56,270</u>
<b>Total:</b>	<b>19 buildings</b>	<b>\$97,227,996</b>	<b>889,400</b>

\*Replacement cost estimate

# William Rainey Harper College

## Campus Directory

### Campus Map



#### Building A, College Center

Assessment/Testing  
Board Room  
Business Office  
Career Center  
Conference Rooms  
Dining Rooms  
Food Service  
Health Service  
Multicultural Affairs  
Office of Student  
Financial Assistance  
President's Office  
Registrar  
Student Activities

#### Building B

Physical Plant  
Division Office  
Public Safety  
Shipping and Receiving

#### Building C

Admissions  
Art, two dimensional  
Center for New  
Students/Orientation  
Continuing Education Information  
Community and Program Services  
Older Adults  
Weekend College Services

#### Building D

Center for Students with  
Disabilities  
Dental Hygiene Clinic  
Life Science and Human  
Services Division Office  
Student Development Center

#### Building E, Lecture- Demonstration Center

#### Building F, Learning

Resources Center  
Academic Enrichment and  
Language Studies Division  
Office  
Learning Assistance Center  
Library  
Media Services  
Tutoring Center  
Writing Center

#### Building G, Vocational Technology Shops and Laboratories

Building H, Vocational  
Technology Shops and  
Laboratories  
CAD and Manufacturing  
Center  
Technology, Mathematics  
and Physical Sciences  
Division Office

#### Building I, Business, Social Science and Vocational Education

Child Care Center  
Student Development Center

Building J, Business,  
Social Science and  
Vocational Education  
Business and Social  
Science Division Office  
Theatre and Box Office

#### Building L, Liberal Arts

Art, three dimensional  
Art Studios  
Bookstore  
Drama Lab  
Liberal Arts Classrooms  
Liberal Arts Division Office

#### Building M, Wellness and Human Performance

#### Building O Observatory

#### Building P

Music  
Women's Center

#### Building S

Publications and  
Communication Services

#### Building T

Park Management  
Roads and Grounds Shop

#### Building U

#### Building V

Greenhouses  
Park Management

Student Parking Lots 1-7,  
9-12



Auxiliary  
Organizations



# Harper College Educational Foundation

The Harper College Educational Foundation was established in 1973 as a non-profit organization to provide additional funding for the College. Its members are appointed by the Foundation Board, and the appointments are confirmed by the Harper College Board of Trustees. The Foundation works within the framework of goals approved by the elected Board of Trustees, which provides coordinating services for the Foundation.

The purpose of the Foundation is to support the educational mission of the College, specifically to:

1. Assist the College in providing broader educational opportunities for students, alumni, district residents and employers;
2. Acquire and administer additional assets for the College;
3. Encourage corporations, foundations and individuals to provide gifts, scholarships, grants or bequests of money or property;
4. Foster development of special instruction, research and cultural programs which cannot be funded through the operating budget of the College; and
5. Act in a fiduciary capacity to carry out any of the foregoing purposes.

**1994-95**

## **Harper College Educational Foundation Board of Directors**

### **Officers:**

Donald D. Torisky, President  
Chairman and Chief Executive Officer  
Lease Resolution Corporation

Dr. Bruce A. Mueller, President-Elect  
Vice President & Corporate Director  
of Human Resources  
Infrastructure & Technology  
Motorola, Inc.

Dr. Paul N. Thompson, Vice President  
President  
William Rainey Harper College

Felice P. Avila, Secretary  
Director of Development and External Affairs  
Executive Director  
Harper College Educational Foundation

Michael A. Wolf, Treasurer  
President  
International Transportation Management, Ltd.

Larry Moats, Trustee Liaison  
President  
Arlington Electrical Construction Co., Inc.

**Members:**

Fred Barr  
(Retired)  
International Harvester Company

Donald Barrington  
Director, Human Resource Development  
Northrop Corporation

Martha A. Bell  
Owner/Principal  
Martha Bell & Associates

David J. Berger  
President  
Berger Enterprises

James A. Braasch  
Vice President  
Northern Trust Bank

James Bradley  
Bradlon, Inc.

Richard T. Guttman  
Associate General  
Counsel and Assistant  
Secretary  
Square D Company

R. James Haring  
(Retired) Corporate Vice President  
Motorola, Inc.

Alan Herbert  
President  
Amersham Holdings, North America

Dr. Robin M. Hoffer  
Insurance & Employee Benefits Consultant  
The Greater Chicago Group

Louis Holian  
President  
Prospect Products

John A. Hug  
Partner  
KPMG Peat Marwick

Lawrence Kaplan  
Vice President  
Coral Enterprises, Inc.

William J. Kern, Jr.  
Sr. Vice President  
Pepper Construction Company

Michael Kiss  
Vice President  
NBD Elk Grove Bank

Thomas MacCarthy  
President  
Harris Bank, Palatine, N.A.

Daniel J. McCarthy  
Assistant Vice President  
Allstate Insurance Company

S. Ahmed Merchant  
President and CEO  
Jimmy John's, Inc.

Michael Phillips  
The Reverend  
St. Philip's Episcopal Church

Alfred Shapiro  
President  
Active Glass Co., Inc.

Dan T. Thomson  
(Retired) President  
Cooper Lighting Division  
Cooper Industries

# Friends of Harper

The Friends of Harper is a non-profit support organization which acts as a communication link between Harper College and the 23 communities it serves. Membership is open to any individual or group interested in furthering the mission of Harper College.

The organization is governed by a board of directors elected from the membership to represent each township in the College district. The Harper College Board of Trustees provides coordinating services for the Friends of Harper organization.

**1994-95**

## Friends of Harper Board of Directors

### Officers:

Nancy Murtaugh  
President  
Inverness

Mary Robbins  
Vice President  
Arlington Heights

Patty Roberts  
Secretary  
Harper Community Relations

Donna Joy  
Treasurer  
Mt. Prospect

### Directors:

Jeanette Muench  
Membership

Mary McLaughlin  
Women's Program

Rev. Michael Phillips  
Educational Foundation Liaison

Richard Kolze  
Board of Trustees Liaison

Dr. Paul Thompson  
President, Harper College

Pat Carney  
Harper Alumni Association

Sylvia Kingsley  
Harper Community Relations

### Directors-at-Large:

Kathleen Amatangelo, '95  
Barrington

Jay Fritz, '95  
Inverness

Evelyn Hunt, '95  
Hoffman Estates

Ray Kaczmarek, '95  
Rolling Meadows

Diane Raniere, '96  
Schaumburg

Patsy Street, '95  
Palatine

Don Torisky, '95  
South Barrington

Rena Trevor, '96  
Rolling Meadows

Mike Zawacke, '96  
Arlington Heights

### Past Presidents

Kris Howard, 1981-82

Jan Tucker, 1982-84

Larry Moats, 1984-85

Sarah Born, 1985-88

Sam Oliver, 1988-91

Jeanette Muench, 1991-94